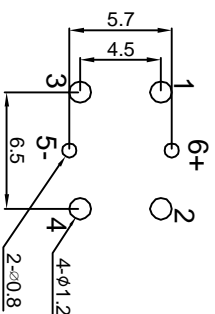
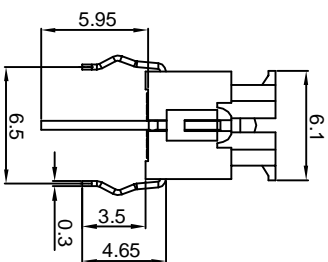
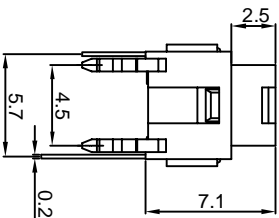
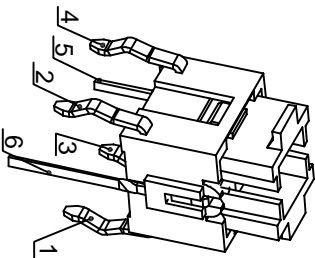
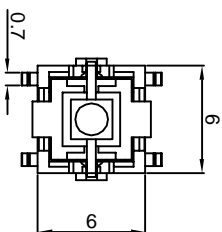
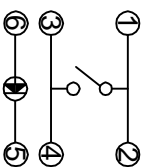




TS2



P.C.B. LAYOUT



CIRCUIT

- Specifications
- Circuit :SPST
- Current rating :50mA
- Voltage rating :12VDC
- Dielectric withstanding voltage :250VAC for 1 minute
- Contact resistance :100mΩ Max. (Initial)
- Insulation resistance :100MΩ Min.
- Operating force :300±50gf
- :200±50gf
- :0.3mm±0.1mm
- :100,000 cycles Min
- :260° C for 5 seconds
- :Momentary
- :+10° C ~ +60° C

**MATERIAL:**  
 Base Frame: Nylon46, UL rated:94 V-2 Min. ;  
 Actuator: PBT, UL rated:94 V-2 Min. ;  
 Terminal: Brass, Silver or Tin plated .

公差 TOLERANCES		.X± 0.3 .XX± 0.15		角度 ANGLE ± 1°	
版本 VER	变更说明 CHANGE DESCRIPTION	日期 DATE	ECN NO.	版本 VERSION	批准 APPROVED BY
A1	重新整理核对	2016.06.23	N/A	A1	核对 CHECKED BY
		日期 DATE	ECN NO.	版本 VERSION	批准 APPROVED BY
		日期 DATE	ECN NO.	A1	核对 CHECKED BY
		日期 DATE	ECN NO.	NONE	绘图 DRAWN BY
		日期 DATE	ECN NO.	2016.06.23	
		日期 DATE	ECN NO.	TS2-00-00X-2	图号 DRAWING NO
		日期 DATE	ECN NO.	TS2-00-00X-2_A1	

单位 DIMENSION UNIT	mm.	
BG 棕绿色	3.2	3.7
W 白色	2.8	3.4
O 橙色	1.8	2.2
RU 蓝色	2.8	3.2
U 蓝色	2.8	3.2
G 黄绿色	1.8	2.2
Y 黄色	1.8	2.2
R 红色	1.8	2.2
灯发光颜色 X	最小	最大
额定电压(V)		
最大额定电流 (mA)		
最大脉冲电流 (mA)		
最大脉冲宽度 (ms)		
最大脉冲频率 (Hz)		