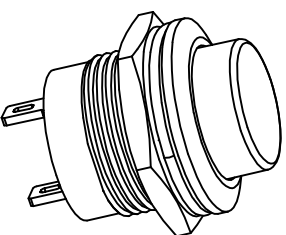
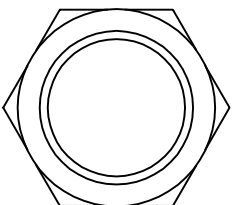


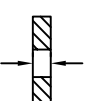
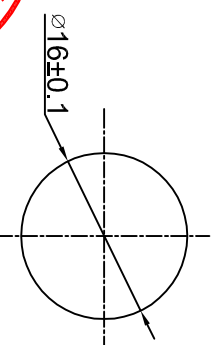
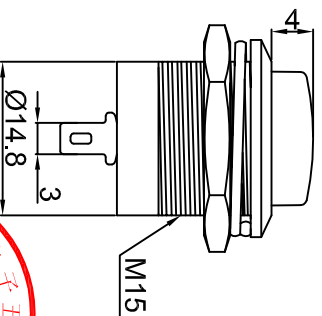
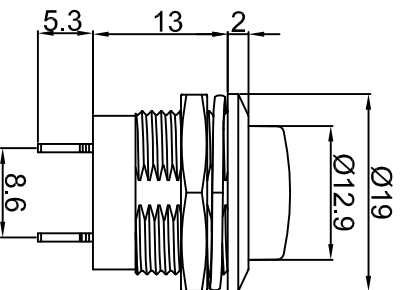


PB-02

受控文件

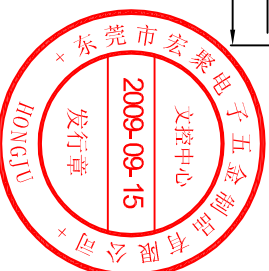


Rating: 6A 125V AC ;
 3A 250V AC ;
 Contact Resistance: 50mΩ Max. ;
 Insulation Resistance:DC 500V 100MΩ Min. ;
 Dielectric Strength:AC 1000V 1 minute
 Total Travel: 2.4±0.4mm
 Operating Force:250±50gf
 Operating Life:50,000 cycles
 Operating Temperature:0°C~85°C
 Function: OFF-(ON)



Panel Thickness: 3mm MAX.

CUT-OUT



Y	Yellow	黄色
W	White	白色
U	Blue	蓝色
R	Red	红色
O	Orange	橙色
G	Green	绿色
B	Black	黑色
A	Gray	灰色
CAP COLOR (X)		

MATERIAL
 Base: PA66, UL rated :94V-2 Min. ;
 Cap: ABS ;
 Terminal: Copper, Silver or Tin plated ;
 Nut: Brass, Ni plated.

公差 TOLERANCES		.X±0.3	.XX±0.15	角度 ANGLE ±1°	单位 DIMENSION UNIT	mm.	
版本 VERSION	A1	比例尺 SCALE	NONE	日期 DATE	品名 TITLE	图号 DRAWING NO	
批准 APPROVED BY	李新超	核对 CHECKED BY	李伟奇	绘图 DRAWN BY	PB-02-PM-R	PB-02-PM-R_A1	
更改说明 CHANGE DESCRIPTION	日期 DATE	ECN NO.					
版本 VER	变更说明	日期 DATE	ECN NO.				
A1	图纸重新整理发行	2009.09.15	N/A				
A0	New Issue	2008.07.08	N/A				
版本 VER	变更说明	日期 DATE	ECN NO.				