



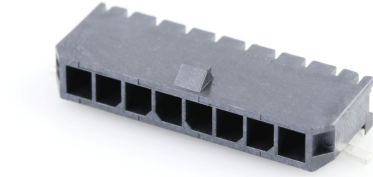
Part Number : [436500812](#)

Product Description : Micro-Fit 3.0 Right-Angle Header, 3.00mm Pitch, Single Row, 8 Circuits, with Solder Tab, Tin, Glow-Wire Capable, Black, Tape and Reel

Series Number : 43650

Status : Active

Product Category : PCB Headers and Receptacles



Documents & Resources

Drawings

[Drawing 436500812_sd.pdf](#)

[Packaging Design Drawing 436500001-PK-000.pdf](#)

[Packaging Design Drawing 708730000-PK-000.pdf](#)

3D Models and Design Files

[3D Model 436500812_stp.zip](#)

[Symbol Footprint Data SYM-43650-0812-001.zip](#)

Specifications

[Product Specification 436500001-PS-JA-000.pdf](#)

[Product Specification 436500001-PS-KO-000.pdf](#)

[Product Specification 436500001-PS-SP-000.pdf](#)

[Product Specification PS-43650-001.pdf](#)

[Test Summary 430450004-TS-000.pdf](#)


[Test Summary TS-43045-001-001.pdf](#)

[Test Summary TS-43045-002-001.pdf](#)

[Test Summary TS-46235-001-001.pdf](#)

Product Environment Compliance

Compliance

GADSL/IMDS	Compliant with Exemption 44; 33
China RoHS	
EU ELV	Not Relevant
Low-Halogen Status	Low-Halogen per IEC 61249-2-21
REACH SVHC	Not Contained per D(2023)3788-DC (14 Jun 2023)
EU RoHS	Compliant per EU 2015/863

Multiple Part Product Compliance Statements

- Eu RoHS
- REACH SVHC
- Low-Halogen

Multiple Part Industry Compliance Documents

- IPC 1752A Class C
- IPC 1752A Class D
- Molex Product Compliance Declaration
- IEC-62474
- chemSHERPA (xml)

EU RoHS Certificate of Compliance

Part Details

General

Status	Active
Category	PCB Headers and Receptacles
Series	43650
Description	Micro-Fit 3.0 Right-Angle Header, 3.00mm Pitch, Single Row, 8 Circuits, with Solder Tab, Tin, Glow-Wire Capable, Black, Tape and Reel
Application	Power, Wire-to-Board

Comments	High Temperature, Square Pin, Solder Type; This Molex product is manufactured from material that has the following ratings, tested by independent agencies: a) A Glow Wire Ignition Temperature (GWIT) of at least 775 deg C per IEC 60695-2-13. b) A Glow Wire Flammability Index (GWFI) above 850 deg C per IEC 60695-2-12 and hence complies with the requirements set out in the International Standard IEC 60335-1 5th edition - household and similar electrical appliances - safety, section 30 Resistance to heat and fire. The customers using this product must determine its suitability for use in their particular application through testing or other acceptable means as described in end-product glow-wire flammability test standard IEC 60695-2-11 and any applicable product end-use standard(s). If it is determined during the customer's evaluation of suitability, that higher performance is required, please contact Molex for possible product options.
Component Type	PCB Header
Product Family	Micro-Fit Connector System
Product Name	Micro-Fit 3.0
UPC	800754712453

Agency

CSA	LR19980
UL	E29179

Electrical

Current - Maximum per Contact	8.5A
Voltage - Maximum	600V

Physical

Breakaway	No
Circuits (Loaded)	8
Circuits (maximum)	8
Color - Resin	Black

Durability (mating cycles max)	30
Flammability	94V-0
Glow-Wire Capable	Yes
Mated Height	6.98mm
Material - Metal	Brass
Material - Plating Mating	Tin
Material - Plating Termination	Tin
Material - Resin	High Temperature Thermoplastic
Net Weight	1.363/g
Number of Rows	1
Orientation	Right Angle
Packaging Type	Embossed Tape on Reel
PCB Locator	Yes
PCB Retention	Yes
PCB Thickness - Recommended	1.60mm
Pitch - Mating Interface	3.00mm
Plating min - Mating	2.540µm
Plating min - Termination	2.540µm
Polarized to PCB	Yes
Shrouded	Fully
Stackable	No
Temperature Range - Operating	-40° to +105°C
Termination Interface Style	Surface Mount

Solder Process Data

Max-Duration	30
Lead-Free Process Capability	REFLOW
Max-Cycle	3
Max-Temp	260

Mates With / Use With

Mates with Part(s)

Description	Part Number
-------------	-------------

Micro-Fit 3.0 Female-to-Micro-Fit 3.0 Female Off-the-Shelf (OTS) Cable Assembly, Single Row, 150.00mm Length, Tin (Sn) Plating, 8 Circuits, Black	<u>2147501081</u>
Micro-Fit 3.0 Female-to-Micro-Fit 3.0 Female Off-the-Shelf (OTS) Cable Assembly, Single Row, 300.00mm Length, Tin (Sn) Plating, 8 Circuits, Black	<u>2147501082</u>
Micro-Fit 3.0 Female-to-Micro-Fit 3.0 Female Off-the-Shelf (OTS) Cable Assembly, Single Row, 600.00mm Length, Tin (Sn) Plating, 8 Circuits, Black	<u>2147501083</u>
Micro-Fit 3.0 Female-to-Pigtail Off-the-Shelf (OTS) Cable Assembly, Single Row, 150.00mm Length, Tin (Sn) Plating, 8 Circuits, Black	<u>2147511081</u>
Micro-Fit 3.0 Female-to-Pigtail Off-the-Shelf (OTS) Cable Assembly, Single Row, 300.00mm Length, Tin (Sn) Plating, 8 Circuits, Black	<u>2147511082</u>
Micro-Fit 3.0 Female-to-Pigtail Off-the-Shelf (OTS) Cable Assembly, Single Row, 600.00mm Length, Tin (Sn) Plating, 8 Circuits, Black	<u>2147511083</u>
Micro-Fit 3.0 Single Row Receptacle Housings	<u>43645</u>
Micro-Fit TPA Single Row Receptacle Housings	<u>171850</u>