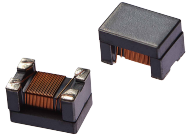


**SCM Series**  
Common Mode Filter  
Size 4532



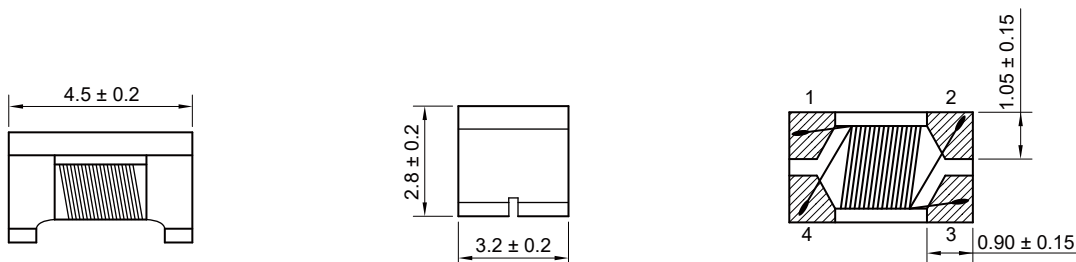
**FEATURES**

- High common mode impedance for outstanding noise suppression performance.
- Small influence on high speed signals through good coupling.
- Operating temperature -40~+125 C (Including self - temperature rise)
- Excellent solderability

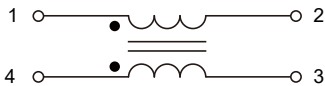
**APPLICATIONS**

- USB2.0 lines for PC, TV, Peripheral equipments
- Standard signal lines
- Audio lines
- Power lines

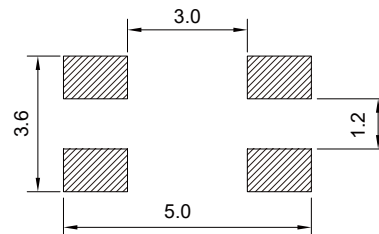
**Dimensions: [mm]**



**Schematic:**



**Land Pattern:[mm]**



**Electrical Properties:**

Part No	Impedance @ 100 MHz Min. (Ω)	Impedance @ 100 MHz Typ. (Ω)	DC Resistance Max. (Ω)	Rated Current Max. (mA)	Rated Volt (V)	Withstand Volt (V)	IR Min. (MΩ)
SCM4532-900-40	68	90	0.050	4000	50	125	10
SCM4532-231-35	173	230	0.050	3500	50	125	10
SCM4532-421-32	300	420	0.055	3200	50	125	10
SCM4532-601-25	450	600	0.060	2500	50	125	10
SCM4532-901-23	650	900	0.070	2300	50	125	10
SCM4532-142-20	1000	1400	0.100	2000	50	125	10
SCM4532-282-09	2100	2800	0.350	900	50	125	10

Typical Electrical Characteristics:

Impedance VS Frequency

