



Part Number : [22272091](#)

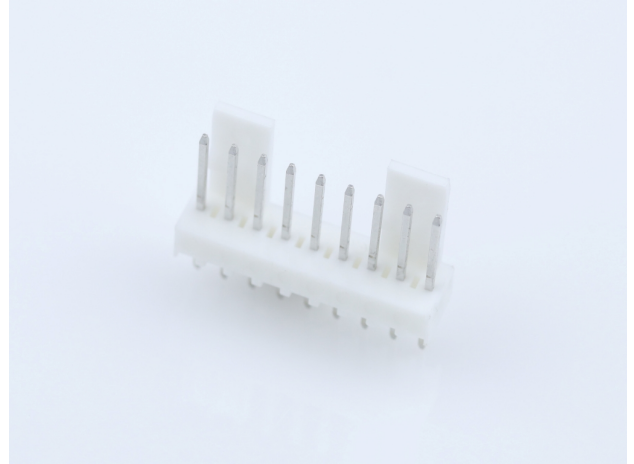
Product Description : KK 254 Wire-to-Board Header, Vertical, with Friction Lock, 9 Circuits, Tin (Sn) Plating

Series Number : 6410

Status : Active

Product Category : PCB Headers and Receptacles

Engineering Number : AE-6410-09A(222)



Documents & Resources

Drawings

[Drawing 022272091_sd.pdf](#)

[Packaging Design Drawing PK-6410-002-001.pdf](#)

3D Models and Design Files

[3D Model PDF 022272091.pdf](#)

[3D Model 022272091_stp.zip](#)


[Symbol Footprint Data SYM-22-27-2091-001.zip](#)

Specifications

[Product Specification PS-99020-0088-001.pdf](#)

Product Environment Compliance

Compliance

| | |
|--------------------|---|
| GADSL/IMDS | Not Relevant |
| China RoHS |  |
| EU ELV | Not Relevant |
| Low-Halogen Status | Low-Halogen per IEC 61249-2-21 |
| REACH SVHC | Not Contained per D(2023)3788-DC (14 Jun 2023) |
| EU RoHS | Compliant per EU 2015/863 |

[Multiple Part Product Compliance Statements](#)

- Eu RoHS

- REACH SVHC

- Low-Halogen

Multiple Part Industry Compliance Documents

- IPC 1752A Class C

- IPC 1752A Class D

- Molex Product Compliance Declaration

- IEC-62474

- chemSHERPA (xml)

EU RoHS Certificate of Compliance

Part Details

General

| | |
|----------------|---|
| Status | Active |
| Category | PCB Headers and Receptacles |
| Series | 6410 |
| Description | KK 254 Wire-to-Board Header, Vertical, with Friction Lock, 9 Circuits, Tin (Sn) Plating |
| Application | Signal, Wire-to-Board |
| Component Type | PCB Header |
| Product Family | KK Interconnect Systems |
| Product Name | KK 254 |
| UPC | 800753735309 |

Agency

| | |
|-----|---------|
| CSA | LR19980 |
| UL | E29179 |

Electrical

| | |
|-------------------------------|------|
| Current - Maximum per Contact | 4.0A |
| Voltage - Maximum | 500V |

Physical

| | |
|--------------------|----|
| Breakaway | No |
| Circuits (Loaded) | 9 |
| Circuits (maximum) | 9 |

| | |
|--------------------------------|---------------------------|
| Color - Resin | Natural (White) |
| First Mate / Last Break | No |
| Flammability | 94V-0 |
| Glow-Wire Capable | No |
| Guide to Mating Part | No |
| Keying to Mating Part | None |
| Lock to Mating Part | Yes |
| Material - Metal | Brass |
| Material - Plating Mating | Tin |
| Material - Plating Termination | Tin |
| Material - Resin | Nylon |
| Net Weight | 1.000/g |
| Number of Rows | 1 |
| Orientation | Vertical |
| Packaging Type | Bag |
| PC Tail Length | 3.56mm |
| PCB Locator | No |
| PCB Retention | None |
| PCB Thickness - Recommended | 1.60mm |
| Pitch - Mating Interface | 2.54mm |
| Pitch - Termination Interface | 2.54mm |
| Plating min - Mating | 5.080µm |
| Plating min - Termination | 5.080µm |
| Polarized to Mating Part | Yes |
| Polarized to PCB | No |
| Shrouded | Partial |
| Stackable | No |
| Temperature Range - Operating | See Product Specification |
| Termination Interface Style | Through Hole |

Solder Process Data

| | |
|------------------------------|------|
| Max-Duration | 5 |
| Lead-Free Process Capability | WAVE |
| Max-Cycle | 1 |
| Max-Temp | 235 |

Mates With / Use With

Mates with Part(s)

| Description | Part Number |
|----------------------------------|-------------|
| KK 254 Single Row Crimp Housings | <u>2695</u> |

This document was generated on Aug 25, 2023