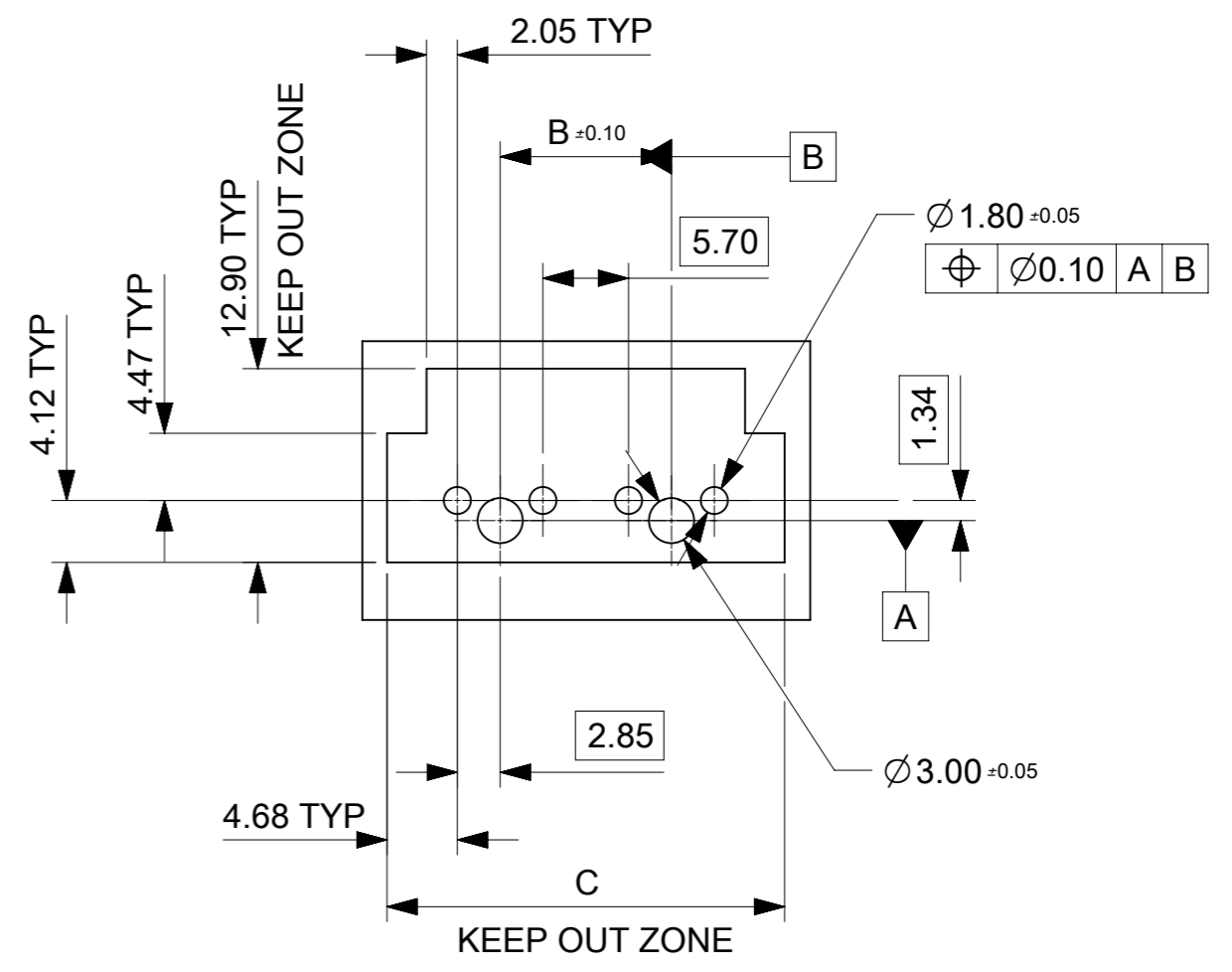
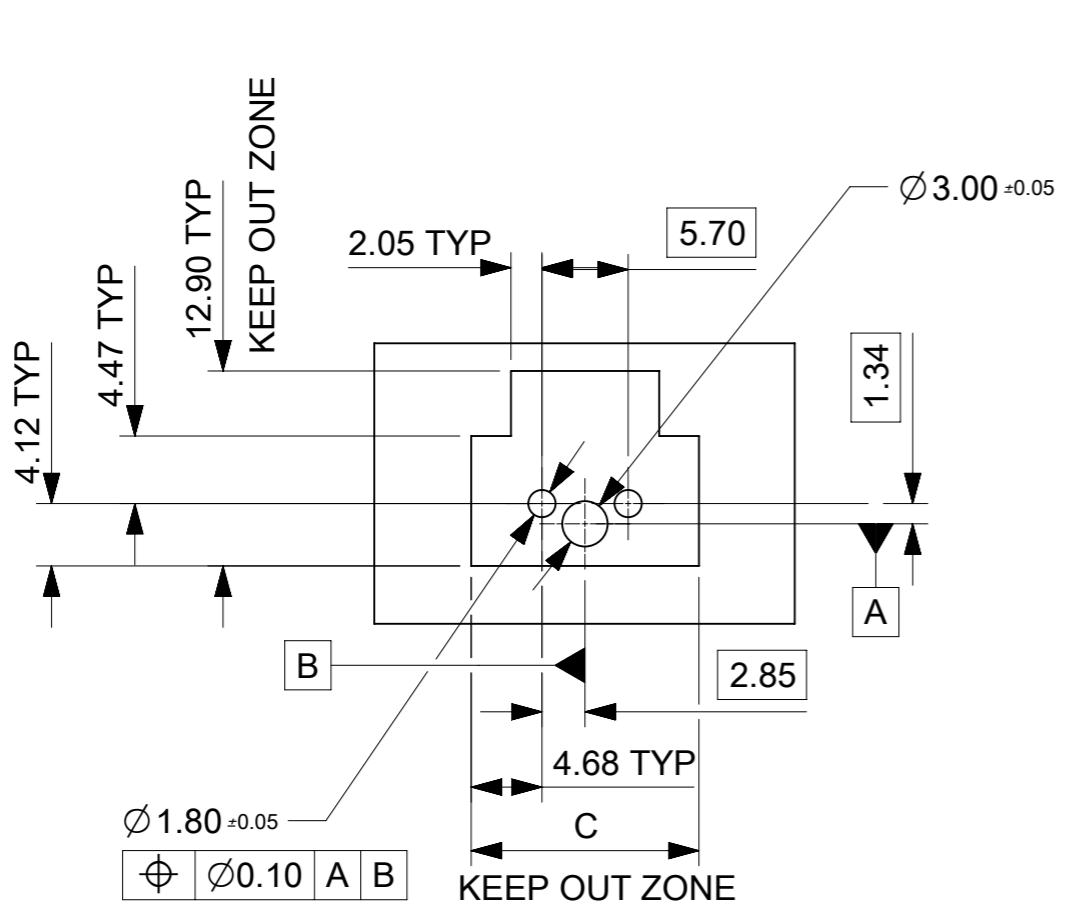


NOTES:

- MATERIAL:
HOUSING LCP, UL94V-0 AND GLOW WIRE CAPABLE PER IEC 60335-1, COLOR: SEE CHART.
TERMINAL COPPER .
- FINISH (PLATING):
(TIN) 1.52 MICROMETER MIN (60 MICROINCH MIN) REFLOWED MATTE TIN OVER
1.27 MICROMETER MIN (50 MICROINCH MIN) MIN NICKEL OVERALL.
(15 GOLD) 0.38 MICROMETER MIN (15 MICROINCH MIN) SELECTIVE GOLD ON CONTACT AREA
WITH 2.54 MICROMETER MIN (100 MICROINCHES MIN) SELECTIVE TIN ON SOLDER AREA
BOTH OVER 1.27 MICROMETER MIN (50 MICROINCHES MIN) NICKEL OVERALL.
(30 GOLD) 0.76 MICROMETER MIN (30 MICROINCH MIN) SELECTIVE GOLD ON CONTACT AREA
WITH 2.54 MICROMETER MIN (100 MICROINCHES MIN) SELECTIVE TIN ON SOLDER AREA
BOTH OVER 1.27 MICROMETER MIN (50 MICROINCHES MIN) NICKEL OVERALL.
- PRODUCT SPECIFICATION: 1720631000-PS.
- PART MATES WITH MOLEX PART NUMBER 200456 SERIES.
- PARTS CONFORM TO CLASS "B" REQUIREMENTS OF COSMETIC SPECIFICATION PS-45499-002.
- PACKAGING SPECIFICATION: TRAY PER 2002411000; T&R WITHOUT KAPTON PER 2002411700;
T&R WITH KAPTON PER 2002411600.
- APPLICATION SPECIFICATION: 768232000-AS.

THIS DRAWING CONTAINS INFORMATION THAT IS PROPRIETARY TO MOLEX ELECTRONIC TECHNOLOGIES, LLC AND SHOULD NOT BE USED WITHOUT WRITTEN PERMISSION									
DIMENSION UNITS		SCALE		CURRENT REV DESC:				molex	
mm		NTS							
GENERAL TOLERANCES (UNLESS SPECIFIED)								MEGA-FIT HDR ASMY TOP LATCH, VERT, 2-8CKT	
ANGULAR TOL ± 3.0°								PRODUCT CUSTOMER DRAWING	
4 PLACES ±				EC NO: 789500		2023/11/28		DOCUMENT NUMBER	
3 PLACES ±				DRWN: JERRYW8		2024/06/18		DOC TYPE	
2 PLACES ±		0.4		CHK'D: XQZHANG		2024/06/18		DOC PART	
1 PLACE ±		0.5		APPR: XQZHANG		2024/06/18		REVISION	
0 PLACES ±				INITIAL REVISION:				2002411000	
				DRWN: YXZHENG		2018/07/18		PSD	
				APPR: YXZHENG		2018/08/06		000	
DRAFT WHERE APPLICABLE MUST REMAIN WITHIN DIMENSIONS		THIRD ANGLE PROJECTION		DRAWING		SERIES		MATERIAL NUMBER	
				A3-SIZE		200241		SEE TABLE	
				CUSTOMER		GENERAL MARKET		1 OF 4	



PCB LAYOUT: COMPONENT SIDE
RECOMMENDED PCB THICKNESS: 1.58 MM/.062 IN
TO 2.36 MM/.093 IN

THIS DRAWING CONTAINS INFORMATION THAT IS PROPRIETARY TO MOLEX ELECTRONIC TECHNOLOGIES, LLC AND SHOULD NOT BE USED WITHOUT WRITTEN PERMISSION											
DIMENSION UNITS		SCALE		CURRENT REV DESC:				molex		MEGA-FIT HDR ASMY TOP LATCH, VERT, 2-8CKT	
mm		NTS									
GENERAL TOLERANCES (UNLESS SPECIFIED)										PRODUCT CUSTOMER DRAWING	
ANGULAR TOL ± 3.0°											
4 PLACES		±		EC NO: 789500				DOCUMENT NUMBER		DOC TYPE	
3 PLACES		±		DRWN: JERRYW8							
2 PLACES		± 0.4		CHK'D: XQZHANG				2023/11/28		2024/06/18	
1 PLACE		± 0.5		APPR: XQZHANG				2024/06/18		PSD 000 C3	
0 PLACES		±		INITIAL REVISION:				2018/07/18		2018/08/06	
DRAFT WHERE APPLICABLE MUST REMAIN WITHIN DIMENSIONS		THIRD ANGLE PROJECTION		DRAWING		SERIES		MATERIAL NUMBER		CUSTOMER	
				A3-SIZE		200241		SEE TABLE		GENERAL MARKET	
								SHEET NUMBER		2 OF 4	


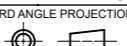
	10	9	8	7	6	5	4	3	2	1																																																																																																																																																						
F	CKT	POLARIZATION-BLACK	POLARIZATION-NATURAL	POLARIZATION-RED	POLARIZATION-BLUE	POLARIZATION-BLUE	POLARIZATION-BLUE	POLARIZATION-BLUE	POLARIZATION-YELLOW																																																																																																																																																							
	2CKT																																																																																																																																																															
E	3CKT																																																																																																																																																															
	4CKT																																																																																																																																																															
D	5CKT																																																																																																																																																															
	6CKT																																																																																																																																																															
C	7CKT																																																																																																																																																															
B	8CKT																																																																																																																																																															
A	<table border="1"> <tr> <td colspan="10">THIS DRAWING CONTAINS INFORMATION THAT IS PROPRIETARY TO MOLEX ELECTRONIC TECHNOLOGIES, LLC AND SHOULD NOT BE USED WITHOUT WRITTEN PERMISSION</td> </tr> <tr> <td colspan="2">DIMENSION UNITS</td> <td colspan="2">SCALE</td> <td colspan="6">CURRENT REV DESC:</td> <td colspan="2" rowspan="2"> </td> </tr> <tr> <td colspan="2">mm</td> <td colspan="2">NTS</td> <td colspan="6"></td> </tr> <tr> <td colspan="10">GENERAL TOLERANCES (UNLESS SPECIFIED)</td> </tr> <tr> <td colspan="10">ANGULAR TOL ± 3.0°</td> </tr> <tr> <td colspan="2">4 PLACES ±</td> <td colspan="2"></td> <td colspan="2">EC NO: 789500</td> <td colspan="2">2023/11/28</td> <td colspan="2" rowspan="2"> MEGA-FIT HDR ASMY TOP LATCH,VERT,2-8CKT </td> </tr> <tr> <td colspan="2">3 PLACES ±</td> <td colspan="2"></td> <td colspan="2">DRWN: JERRYW8</td> <td colspan="2">2024/06/18</td> </tr> <tr> <td colspan="2">2 PLACES ±</td> <td colspan="2">0.4</td> <td colspan="2">CHK'D: XQZHANG</td> <td colspan="2">2024/06/18</td> <td colspan="2" rowspan="2"> PRODUCT CUSTOMER DRAWING </td> </tr> <tr> <td colspan="2">1 PLACE ±</td> <td colspan="2">0.5</td> <td colspan="2">APPR: XQZHANG</td> <td colspan="2"></td> </tr> <tr> <td colspan="2">0 PLACES ±</td> <td colspan="2"></td> <td colspan="2">INITIAL REVISION:</td> <td colspan="2"></td> <td colspan="2" rowspan="2"> DOCUMENT NUMBER 2002411000 </td> </tr> <tr> <td colspan="2"></td> <td colspan="2"></td> <td colspan="2">DRWN: YXZHENG</td> <td colspan="2">2018/07/18</td> <td colspan="2">DOC TYPE DOC PART REVISION</td> </tr> <tr> <td colspan="2"></td> <td colspan="2"></td> <td colspan="2">APPR: YXZHENG</td> <td colspan="2">2018/08/06</td> <td colspan="2">PSD 000 C3</td> </tr> <tr> <td colspan="4">DRAFT WHERE APPLICABLE MUST REMAIN WITHIN DIMENSIONS</td> <td colspan="2">THIRD ANGLE PROJECTION</td> <td colspan="2">DRAWING</td> <td colspan="2">SERIES</td> <td colspan="2">MATERIAL NUMBER</td> <td colspan="2">CUSTOMER</td> <td colspan="2">SHEET NUMBER</td> </tr> <tr> <td colspan="4"></td> <td colspan="2"></td> <td colspan="2">A3-SIZE</td> <td colspan="2">200241</td> <td colspan="2">SEE TABLE</td> <td colspan="2">GENERAL MARKET</td> <td colspan="2">3 OF 4</td> </tr> </table>										THIS DRAWING CONTAINS INFORMATION THAT IS PROPRIETARY TO MOLEX ELECTRONIC TECHNOLOGIES, LLC AND SHOULD NOT BE USED WITHOUT WRITTEN PERMISSION										DIMENSION UNITS		SCALE		CURRENT REV DESC:								mm		NTS								GENERAL TOLERANCES (UNLESS SPECIFIED)										ANGULAR TOL ± 3.0°										4 PLACES ±				EC NO: 789500		2023/11/28		MEGA-FIT HDR ASMY TOP LATCH,VERT,2-8CKT		3 PLACES ±				DRWN: JERRYW8		2024/06/18		2 PLACES ±		0.4		CHK'D: XQZHANG		2024/06/18		PRODUCT CUSTOMER DRAWING		1 PLACE ±		0.5		APPR: XQZHANG				0 PLACES ±				INITIAL REVISION:				DOCUMENT NUMBER 2002411000						DRWN: YXZHENG		2018/07/18		DOC TYPE DOC PART REVISION						APPR: YXZHENG		2018/08/06		PSD 000 C3		DRAFT WHERE APPLICABLE MUST REMAIN WITHIN DIMENSIONS				THIRD ANGLE PROJECTION		DRAWING		SERIES		MATERIAL NUMBER		CUSTOMER		SHEET NUMBER								A3-SIZE		200241		SEE TABLE		GENERAL MARKET		3 OF 4	
THIS DRAWING CONTAINS INFORMATION THAT IS PROPRIETARY TO MOLEX ELECTRONIC TECHNOLOGIES, LLC AND SHOULD NOT BE USED WITHOUT WRITTEN PERMISSION																																																																																																																																																																
DIMENSION UNITS		SCALE		CURRENT REV DESC:																																																																																																																																																												
mm		NTS																																																																																																																																																														
GENERAL TOLERANCES (UNLESS SPECIFIED)																																																																																																																																																																
ANGULAR TOL ± 3.0°																																																																																																																																																																
4 PLACES ±				EC NO: 789500		2023/11/28		MEGA-FIT HDR ASMY TOP LATCH,VERT,2-8CKT																																																																																																																																																								
3 PLACES ±				DRWN: JERRYW8		2024/06/18																																																																																																																																																										
2 PLACES ±		0.4		CHK'D: XQZHANG		2024/06/18		PRODUCT CUSTOMER DRAWING																																																																																																																																																								
1 PLACE ±		0.5		APPR: XQZHANG																																																																																																																																																												
0 PLACES ±				INITIAL REVISION:				DOCUMENT NUMBER 2002411000																																																																																																																																																								
				DRWN: YXZHENG		2018/07/18				DOC TYPE DOC PART REVISION																																																																																																																																																						
				APPR: YXZHENG		2018/08/06		PSD 000 C3																																																																																																																																																								
DRAFT WHERE APPLICABLE MUST REMAIN WITHIN DIMENSIONS				THIRD ANGLE PROJECTION		DRAWING		SERIES		MATERIAL NUMBER		CUSTOMER		SHEET NUMBER																																																																																																																																																		
						A3-SIZE		200241		SEE TABLE		GENERAL MARKET		3 OF 4																																																																																																																																																		
	DOCUMENT STATUS	P1	RELEASE DATE	2024/06/18	06:39:51																																																																																																																																																											

10		9			8				
CKT	PLATING CODE	CORLOR	PART NUMBER	DIM-A	DIM-B	DIM-C	PK SPEC		
2	TIN	BLACK	2002411112	12.05	N/A	15.06	TRAY (2002411000)		
3			2002411113	17.75	5.7	20.76			
4			2002411114	23.45	11.4	26.46			
5			2002411115	29.15	17.1	32.16			
6			2002411116	34.85	22.8	37.86			
7			2002411117	40.55	28.5	43.56			
8			2002411118	46.25	34.2	49.26			
2			15"GOLD	BLACK	2002411122	12.05		N/A	15.06
3	2002411123	17.75			5.7	20.76			
4	2002411124	23.45			11.4	26.46			
5	2002411125	29.15			17.1	32.16			
6	2002411126	34.85			22.8	37.86			
7	2002411127	40.55			28.5	43.56			
8	2002411128	46.25			34.2	49.26			
2	30"GOLD	BLACK			2002411132	12.05	N/A	15.06	
3			2002411133	17.75	5.7	20.76			
4			2002411134	23.45	11.4	26.46			
5			2002411135	29.15	17.1	32.16			
6			2002411136	34.85	22.8	37.86			
7			2002411137	40.55	28.5	43.56			
8			2002411138	46.25	34.2	49.26			

7		6			5				
CKT	PLATING CODE	CORLOR	PART NUMBER	DIM-A	DIM-B	DIM-C	PK SPEC		
2	TIN	BLACK	2002411712	12.05	N/A	15.06	TAPE&REEL WITHOUT KAPTON (2002411700)		
3			2002411713	17.75	5.7	20.76			
4			2002411714	23.45	11.4	26.46			
5			2002411715	29.15	17.1	32.16			
6			2002411716	34.85	22.8	37.86			
7			2002411717	40.55	28.5	43.56			
8			2002411718	46.25	34.2	49.26			
2			15"GOLD	BLACK	2002411722	12.05		N/A	15.06
3	2002411723	17.75			5.7	20.76			
4	2002411724	23.45			11.4	26.46			
5	2002411725	29.15			17.1	32.16			
6	2002411726	34.85			22.8	37.86			
7	2002411727	40.55			28.5	43.56			
8	2002411728	46.25			34.2	49.26			
2	30"GOLD	BLACK			2002411732	12.05	N/A	15.06	
3			2002411733	17.75	5.7	20.76			
4			2002411734	23.45	11.4	26.46			
5			2002411735	29.15	17.1	32.16			
6			2002411736	34.85	22.8	37.86			
7			2002411737	40.55	28.5	43.56			
8			2002411738	46.25	34.2	49.26			

4		3			2			1	
CKT	PLATING CODE	CORLOR	PART NUMBER	DIM-A	DIM-B	DIM-C	PK SPEC		
2	TIN	BLACK	2002411612	12.05	N/A	15.06	TAPE&REEL WITH KAPTON (2002411600)		
3			2002411613	17.75	5.7	20.76			
4			2002411614	23.45	11.4	26.46			
5			2002411615	29.15	17.1	32.16			
6			2002411616	34.85	22.8	37.86			
7			2002411617	40.55	28.5	43.56			
8			2002411618	46.25	34.2	49.26			
2			15"GOLD	BLACK	2002411622	12.05		N/A	15.06
3	2002411623	17.75			5.7	20.76			
4	2002411624	23.45			11.4	26.46			
5	2002411625	29.15			17.1	32.16			
6	2002411626	34.85			22.8	37.86			
7	2002411627	40.55			28.5	43.56			
8	2002411628	46.25			34.2	49.26			
2	30"GOLD	BLACK			2002411632	12.05	N/A	15.06	
3			2002411633	17.75	5.7	20.76			
4			2002411634	23.45	11.4	26.46			
5			2002411635	29.15	17.1	32.16			
6			2002411636	34.85	22.8	37.86			
7			2002411637	40.55	28.5	43.56			
8			2002411638	46.25	34.2	49.26			

10		9			8				
CKT	PLATING CODE	CORLOR	PART NUMBER	DIM-A	DIM-B	DIM-C	PK SPEC		
2	TIN	NATURAL	2002412112	12.05	N/A	15.06	TRAY (2002411000)		
3			2002412113	17.75	5.7	20.76			
4			2002412114	23.45	11.4	26.46			
5			2002412115	29.15	17.1	32.16			
6			2002412116	34.85	22.8	37.86			
7			2002412117	40.55	28.5	43.56			
8			2002412118	46.25	34.2	49.26			
2			RED	2002413112	12.05	N/A		15.06	
3		2002413113		17.75	5.7	20.76			
4		2002413114		23.45	11.4	26.46			
5		2002413115		29.15	17.1	32.16			
6		2002413116		34.85	22.8	37.86			
7		2002413117		40.55	28.5	43.56			
8		2002413118		46.25	34.2	49.26			
2		BLUE		2002415112	12.05	N/A		15.06	
3			2002415113	17.75	5.7	20.76			
4			2002415114	23.45	11.4	26.46			
5			2002415115	29.15	17.1	32.16			
6			2002415116	34.85	22.8	37.86			
7			2002415117	40.55	28.5	43.56			
8			2002415118	46.25	34.2	49.26			
2			YELLOW	2002416112	12.05	N/A		15.06	
3		2002416113		17.75	5.7	20.76			
4		2002416114		23.45	11.4	26.46			
5	2002416115	29.15		17.1	32.16				
6	2002416116	34.85		22.8	37.86				
7	2002416117	40.55		28.5	43.56				
8	2002416118	46.25		34.2	49.26				

THIS DRAWING CONTAINS INFORMATION THAT IS PROPRIETARY TO MOLEX ELECTRONIC TECHNOLOGIES, LLC AND SHOULD NOT BE USED WITHOUT WRITTEN PERMISSION									
DIMENSION UNITS		SCALE		CURRENT REV DESC:					
mm		NTS		 MEGA-FIT HDR ASMY TOP LATCH,VERT,2-8CKT PRODUCT CUSTOMER DRAWING					
GENERAL TOLERANCES (UNLESS SPECIFIED)									
ANGULAR TOL ± 3.0 °									
4 PLACES ±		EC NO: 789500							
3 PLACES ±		DRWN: JERRYW8 2023/11/28							
2 PLACES ± 0.4		CHK'D: XQZHANG 2024/06/18							
1 PLACE ± 0.5		APPR: XQZHANG 2024/06/18							
0 PLACES ±		INITIAL REVISION:							
DRAFT WHERE APPLICABLE MUST REMAIN WITHIN DIMENSIONS		THIRD ANGLE PROJECTION		DRAWING		SERIES		MATERIAL NUMBER	
				A3-SIZE		200241		2018/07/18 2018/08/06	
DOCUMENT STATUS		P1		RELEASE DATE		2024/06/18 06:39:51		DOCUMENT NUMBER	
								2002411000	
								PSD 000 C3	
								CUSTOMER	
								GENERAL MARKET	
								SHEET NUMBER	
								4 OF 4	