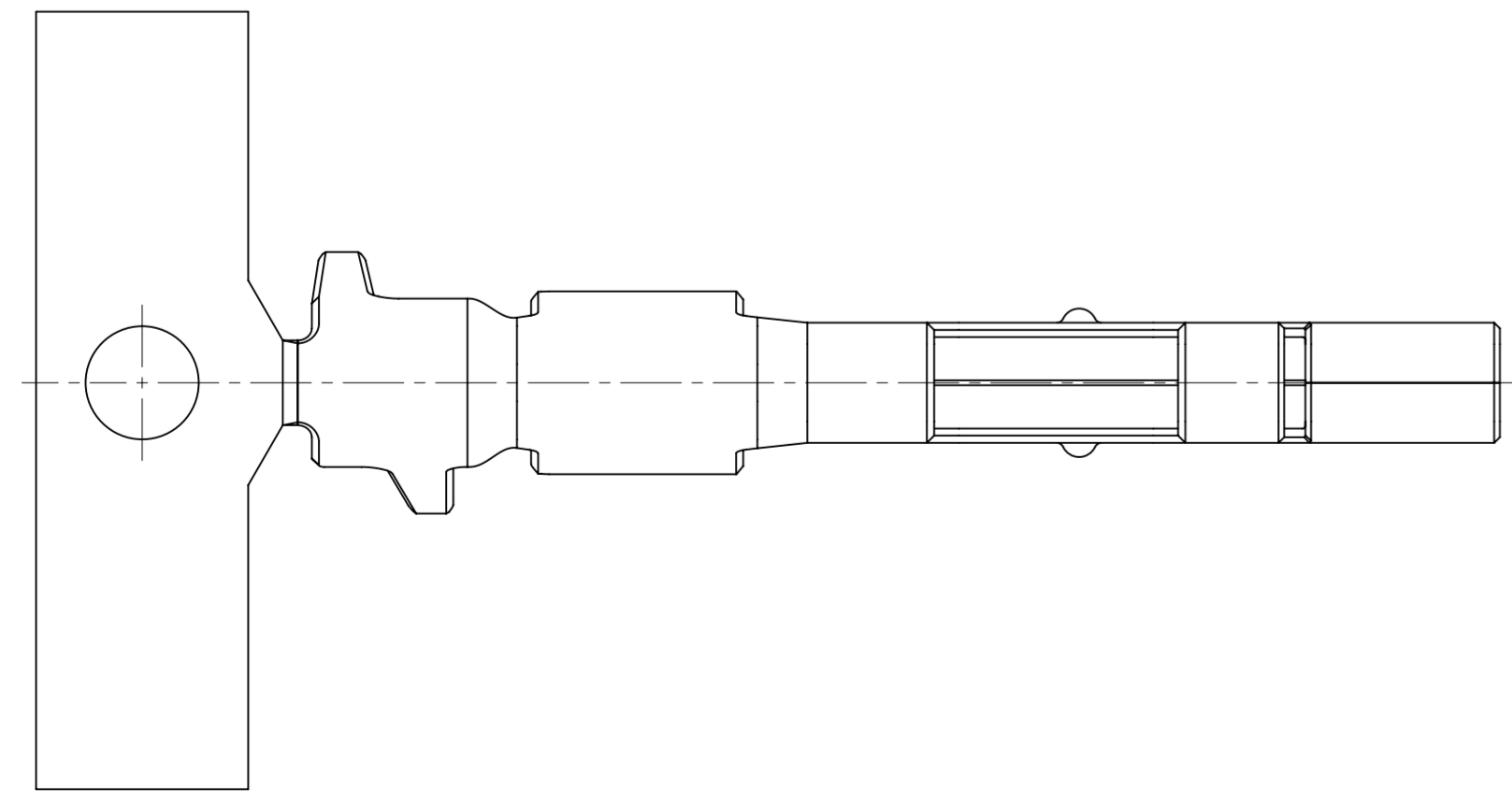
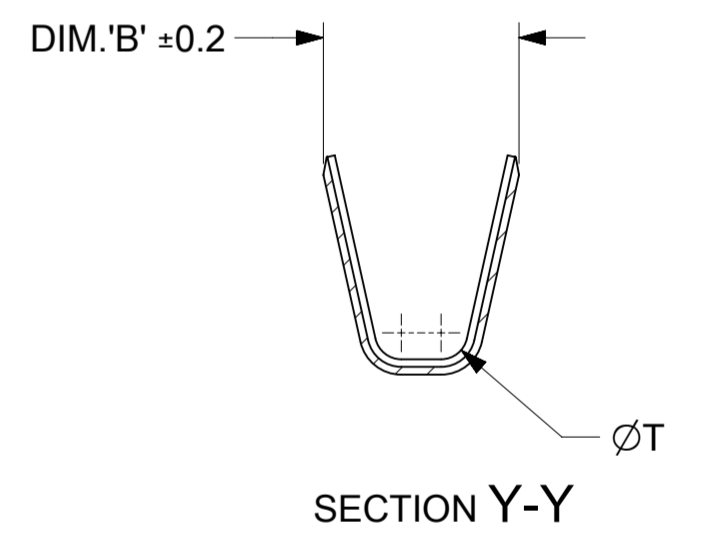
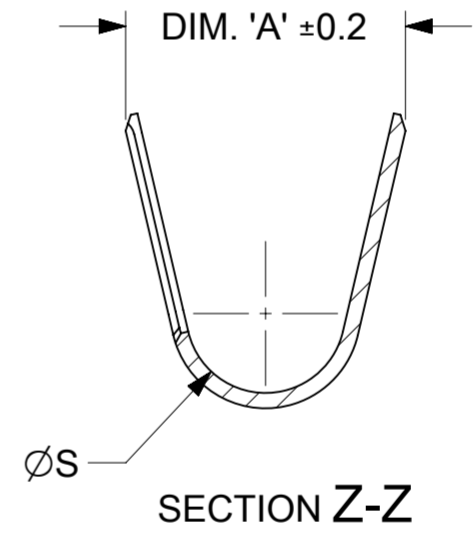
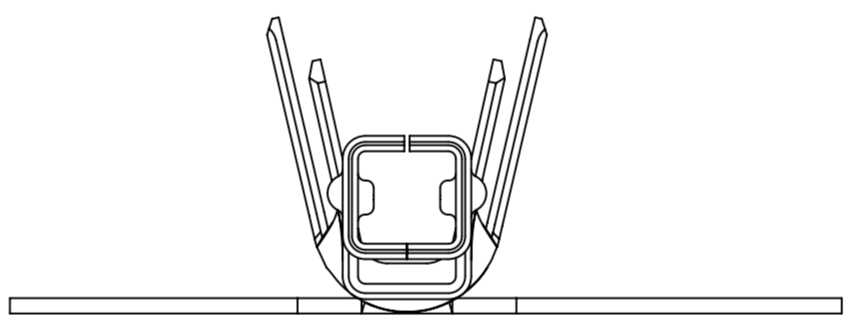
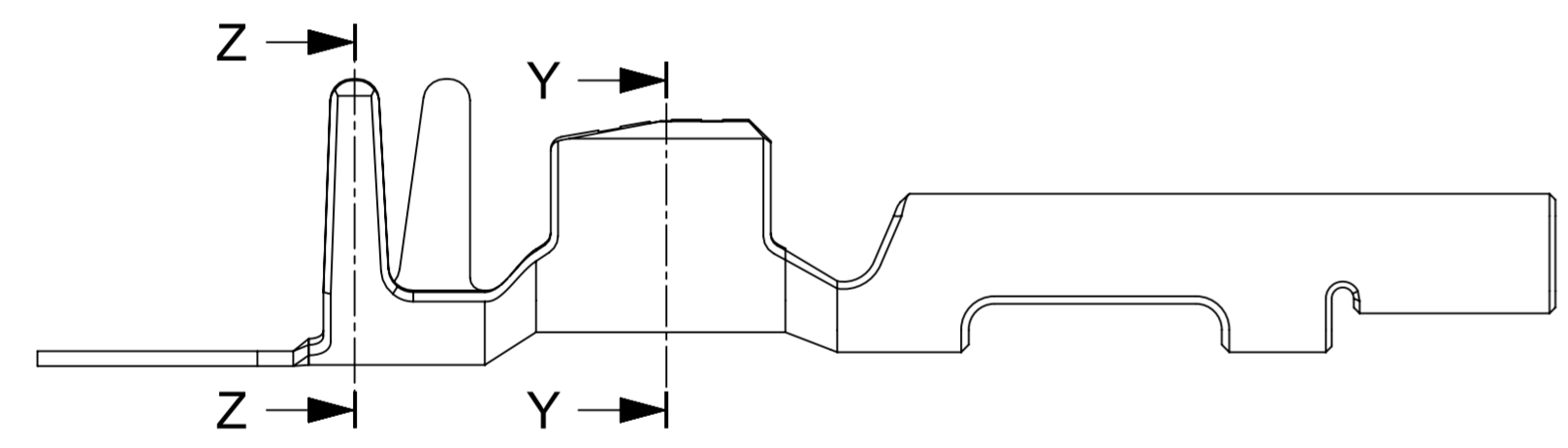
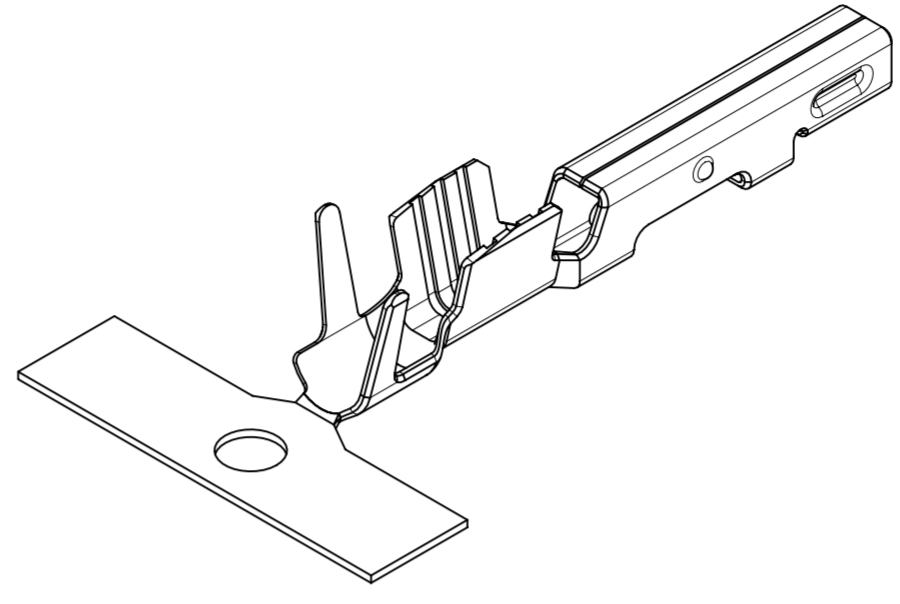
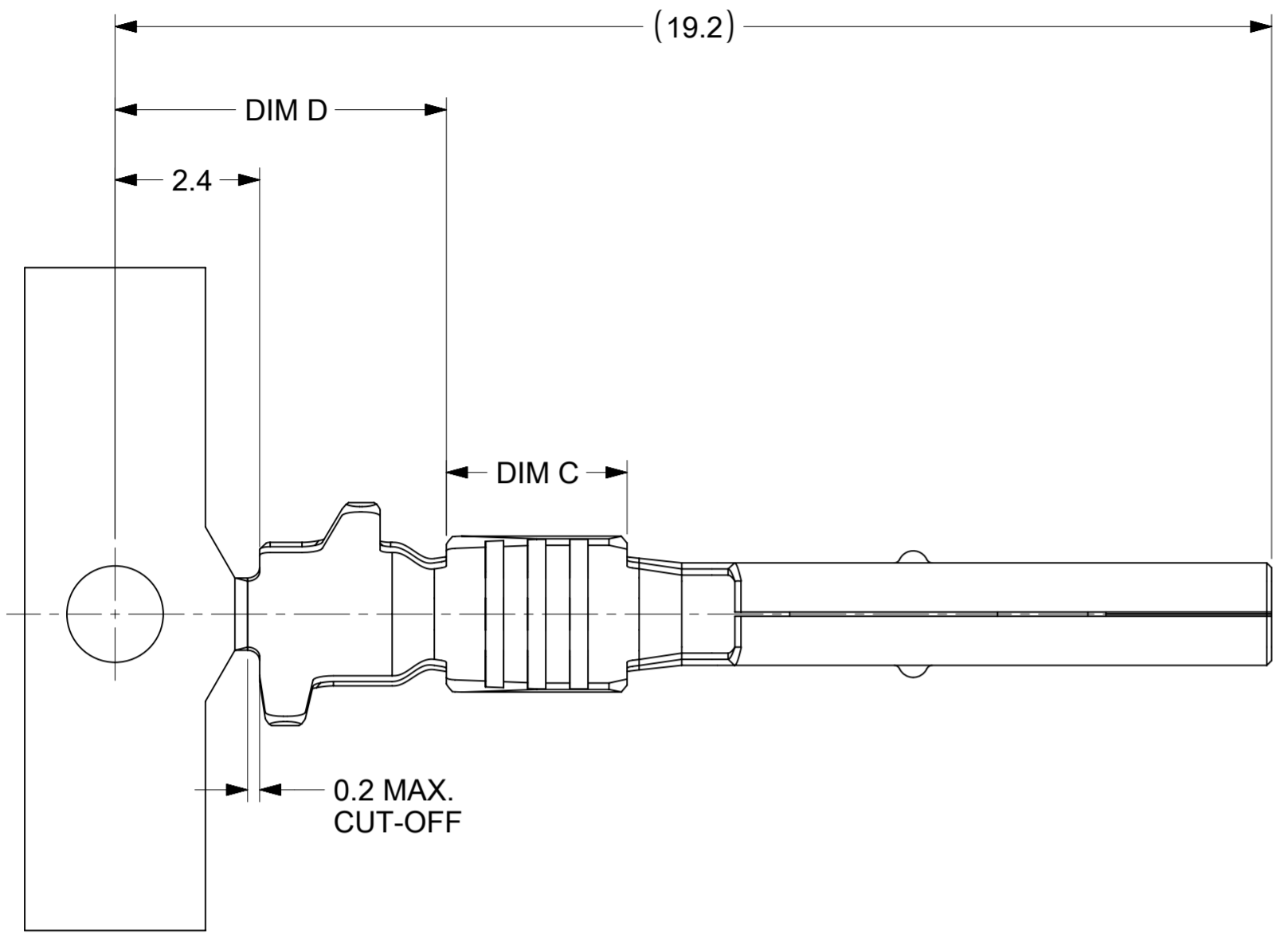


- NOTES:
1. MATERIAL: COPPER ALLOY
 2. PLATING: 100µin MIN. OVERALL MATTE TIN OVER 50µin MIN. OVERALL MATTE NICKEL.
 3. PRODUCT SPECIFICATION: 2077760000-PS
 4. APPLICATION SPECIFICATION: 207776000-AS
 5. PACKAGING SPEC: REEL PACK PER: 2077770000-PK
 6. THIS CRIMP TERMINAL TO BE USED WITH ASSEMBLY SERIES 207782
 7. THIS CRIMP TERMINAL MATES WITH PLUG CRIMP TERMINAL SERIES 207776
 8. THIS PART CONFORMS TO CLASS 'B' REQUIREMENTS OF COSMETIC SPEC PS-45499-002
 9. WIRE SPECIFICATION: SEE CHART
 10. CRIMP TOOLING:
 APPLICATOR PART NUMBER: REFER 2077760000-AS
 HAND TOOL PART NUMBER: REFER 2077760000-AS



TERMINAL PART NO.	WIRE AWG	INSULATION DIA	A	B	C	D	S	T	WIRE STYLE
2077770001	16AWG	1.9 - 2.4	3.7	2.6	3.0	5.5	2.1	0.7	UL1007/UL1061
2077770002	18-20AWG	1.46 - 2.1	2.7	2.0	3.0	5.5	1.6	0.6	UL1007/UL1061
2077770003	18-20AWG	2.55 - 2.70	3.7	2.0	2.2	6.3	2.5	0.7	UL1015/UL1230

THIS DRAWING CONTAINS INFORMATION THAT IS PROPRIETARY TO MOLEX ELECTRONIC TECHNOLOGIES, LLC AND SHOULD NOT BE USED WITHOUT WRITTEN PERMISSION

DIMENSION UNITS mm	SCALE 10:1	CURRENT REV DESC:		molex		
GENERAL TOLERANCES (UNLESS SPECIFIED)		EC NO: 754828			RECEPTACLE CRIMP TERMINAL SQUBA 3.6	
ANGULAR TOL	± °	DRWN: VENKAS5	2023/06/27			
4 PLACES	±	CHK'D: VENKAS5	2023/06/27			
3 PLACES	±	APPR: MRAMAKRISHNA	2023/06/27	PRODUCT CUSTOMER DRAWING		
2 PLACES	±	INITIAL REVISION:		DOCUMENT NUMBER		
1 PLACE	± 0.2	DRWN: MUM	2019/01/31	2077770000-SD		
0 PLACES	±	APPR: NCSR	2019/07/03		DOC TYPE	
DRAFT WHERE APPLICABLE MUST REMAIN WITHIN DIMENSIONS	THIRD ANGLE PROJECTION	DRAWING	SERIES	MATERIAL NUMBER	DOC PART	REVISION
		A2-SIZE	207777	SEE TABLE	000	C1
				CUSTOMER		SHEET NUMBER
				GENERAL MARKET		1 OF 1