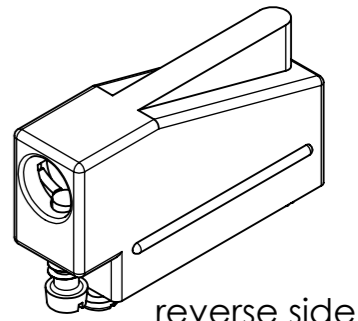


1	2	3	4	5	6	7	8											
Material-No.	Order-No.	Shell Size / for No. of Contacts	A ±0.3	B ±0.1	C ±0.3	D ±0.3	E ±0.3	∅F1 min. - max. Strain relief	∅F2 min. - max. Strain relief	G ±0.3	H ±0.3	J ±0.3	K ±0.3	L ±0.3	M ±0.3	T ±0.3		
1731110008	F-PHR-1E	1 / 9	14.3	25	30.9	18.5	12.7	5 - 6.9	Size 1	3.5 - 5	Size 2	38	25.4	8.8	20.1	18.8	12	11
1731110009	F-PHR-2E	2 / 15	14.3	33.3	39.3	18.3	12.7	5 - 9.1	Size 1	3.5 - 6	Size 2	46.3	25.4	8.8	28.1	17	12	11
1731110010	F-PHR-3E	3 / 25	14.3	47	53.2	24.8	12.7	5 - 9.1	Size 3	4 - 7	Size 4	60.1	31.7	8.8	42.3	19.6	16	11
1731110011	F-PHR-4E	4 / 37	14.3	63.5	69.7	30.5	12.7	5 - 9.1	Size 3	5 - 7	Size 4	76.4	38.1	8.8	58.8	21.7	17	11
1731110012	F-PHR-5E	5 / 50	17	61.1	67.9	31.1	15.5	5 - 11.6	Size 5	3.5 - 7	Size 6	75.2	38.1	11.2	56.4	22.2	17.3	13.2

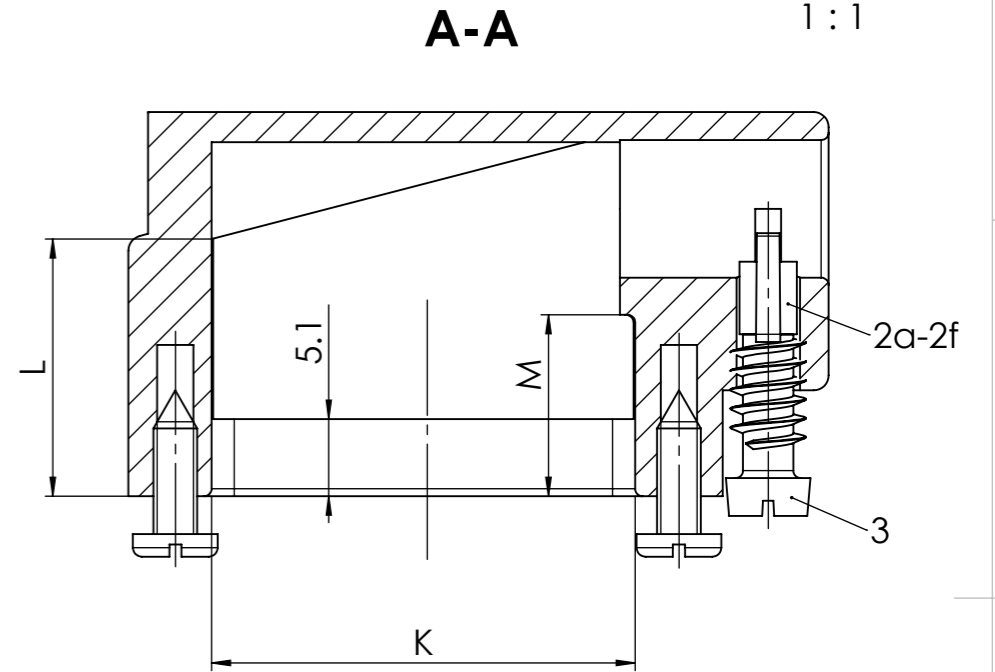
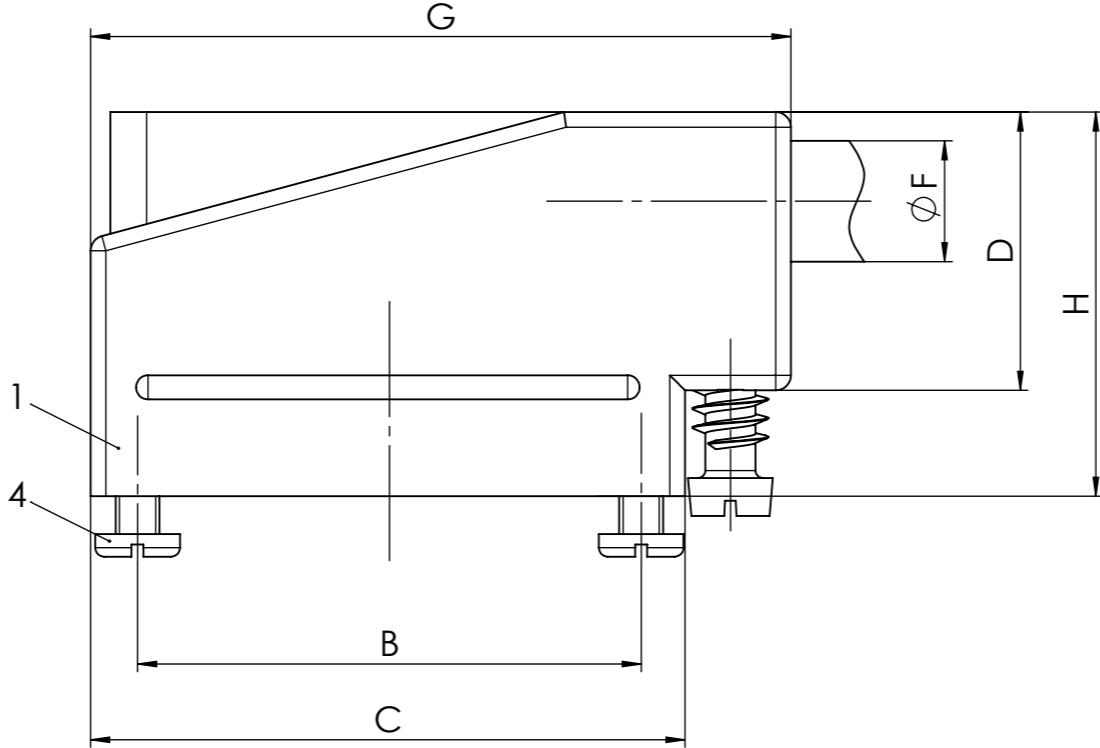
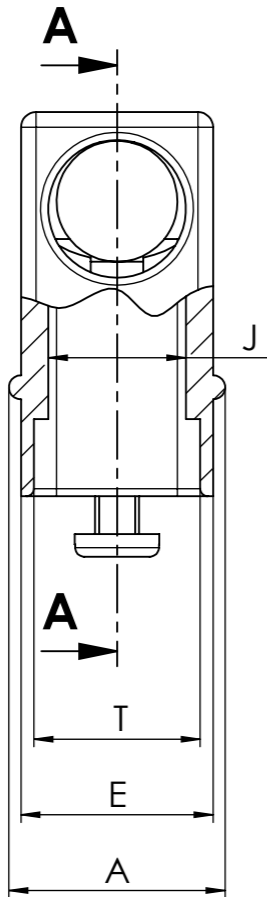
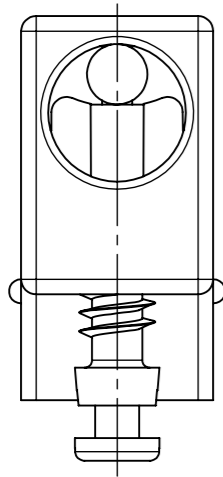
∅F1 = Cable diameter for Strain relief Size 1, 3 or 5
∅F2 = Cable diameter for Strain relief Size 2, 4 or 6



reverse side
1:1

view with Strain relief
Size 2, 4 or 6

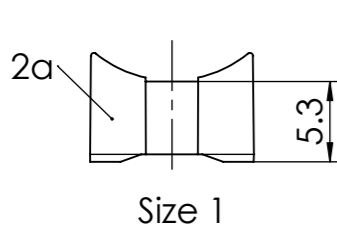
view with Strain relief
Size 1, 3 or 5



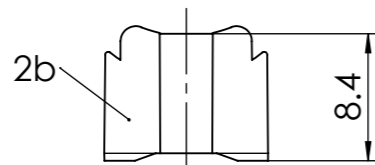
max. torque are 40 Ncm
Part-No. 2a to 2f, 3 and 4 not mounted

F-PHR-1-5E - Individually packed

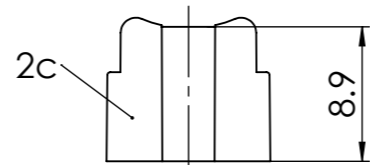
RoHS compliant
by exemption



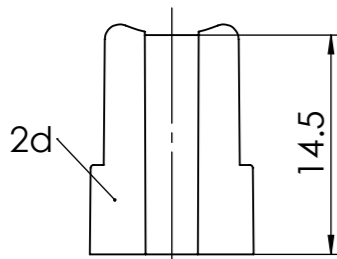
Size 1



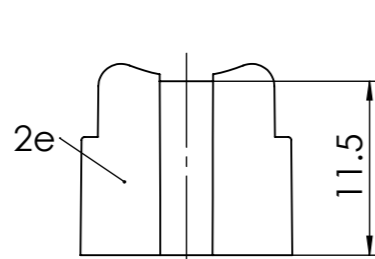
Size 2



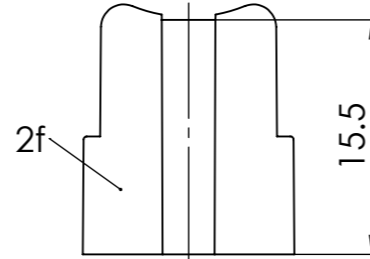
Size 3



Size 4



Size 5



Size 6

No.	St.	Part	Type Description/Material	Surface plating/Colour/Class
4	2	Connector mounting screw	Steel	nickel plated
3	1	Screw	Steel	nickel plated
2f	1	Strain relief	Size 6 / PA	grey
2e	1	Strain relief	Size 5 / PA	grey
2d	1	Strain relief	Size 4 / PA	grey
2c	1	Strain relief	Size 3 / PA	grey
2b	1	Strain relief	Size 2 / PA	grey
2a	1	Strain relief	Size 1 / PA	grey
1	1	Hood	F-PHR-1-5 / PA	grey

SYMBOLS					THIS DRAWING CONTAINS INFORMATION THAT IS PROPRIETARY TO MOLEX ELECTRONIC TECHNOLOGIES, LLC AND SHOULD NOT BE USED WITHOUT WRITTEN PERMISSION				
▽ = 0	▽ = 0	▽ = 0	▽ = 0	▽ = 0	DIMENSION UNITS	SCALE	MEASUREMENTS WITHOUT TOLERANCE ACC. TO	molex	
▽ = 0	▽ = 0	▽ = 0	▽ = 0	mm	2:1	ISO 2768-m	FCT Plastic Hood		
▽ = 0	▽ = 0	▽ = 0	▽ = 0	▽ = 0	3	24131	CURRENT REVISION	PRODUCT CUSTOMER DRAWING	
▽ = 0	▽ = 0	▽ = 0	▽ = 0	▽ = 0	2	22419	DRWN: DRAWN BY ameyerrichte 08-07-2020	MATERIAL NUMBER	
▽ = 0	▽ = 0	▽ = 0	▽ = 0	▽ = 0	1		APPR: APPR BY hstanisch 08-07-2020	REVISION	
▽ = 0	▽ = 0	▽ = 0	▽ = 0	▽ = 0	REV.	CH.-NO.	INITIAL REVISION	see table	
▽ = 0	▽ = 0	▽ = 0	▽ = 0	▽ = 0	3	24131	DRWN: DRAWN BY Michael.Holze 28-07-2008	DOCUMENT NUMBER	
▽ = 0	▽ = 0	▽ = 0	▽ = 0	▽ = 0	2	22419	APPR: APPR BY KBurkhardt 17-11-2008	F-PHR-1-5	
▽ = 0	▽ = 0	▽ = 0	▽ = 0	▽ = 0	1		REPLACEMENT FOR:	CUSTOMER	
▽ = 0	▽ = 0	▽ = 0	▽ = 0	▽ = 0			F-PHR-1-5_SW	GENERAL MARKET	
▽ = 0	▽ = 0	▽ = 0	▽ = 0	▽ = 0			THIRD ANGLE PROJECTION	SHEET NUMBER	
▽ = 0	▽ = 0	▽ = 0	▽ = 0	▽ = 0			DRAWING	1 OF 1	
▽ = 0	▽ = 0	▽ = 0	▽ = 0	▽ = 0			A3-SIZE		

COMMENT: ALL RIGHTS ARE RESERVED BY US FOR THIS DRAWING. WITHOUT OUR PRIOR CONSENT, IT MAY NEITHER BE DUPLICATED NOR MADE AVAILABLE TO A THIRD PARTY. AND IT ALSO MAY NOT BE IMPROPERLY USED BY THE RECEIVER, OR A THIRD PARTY.