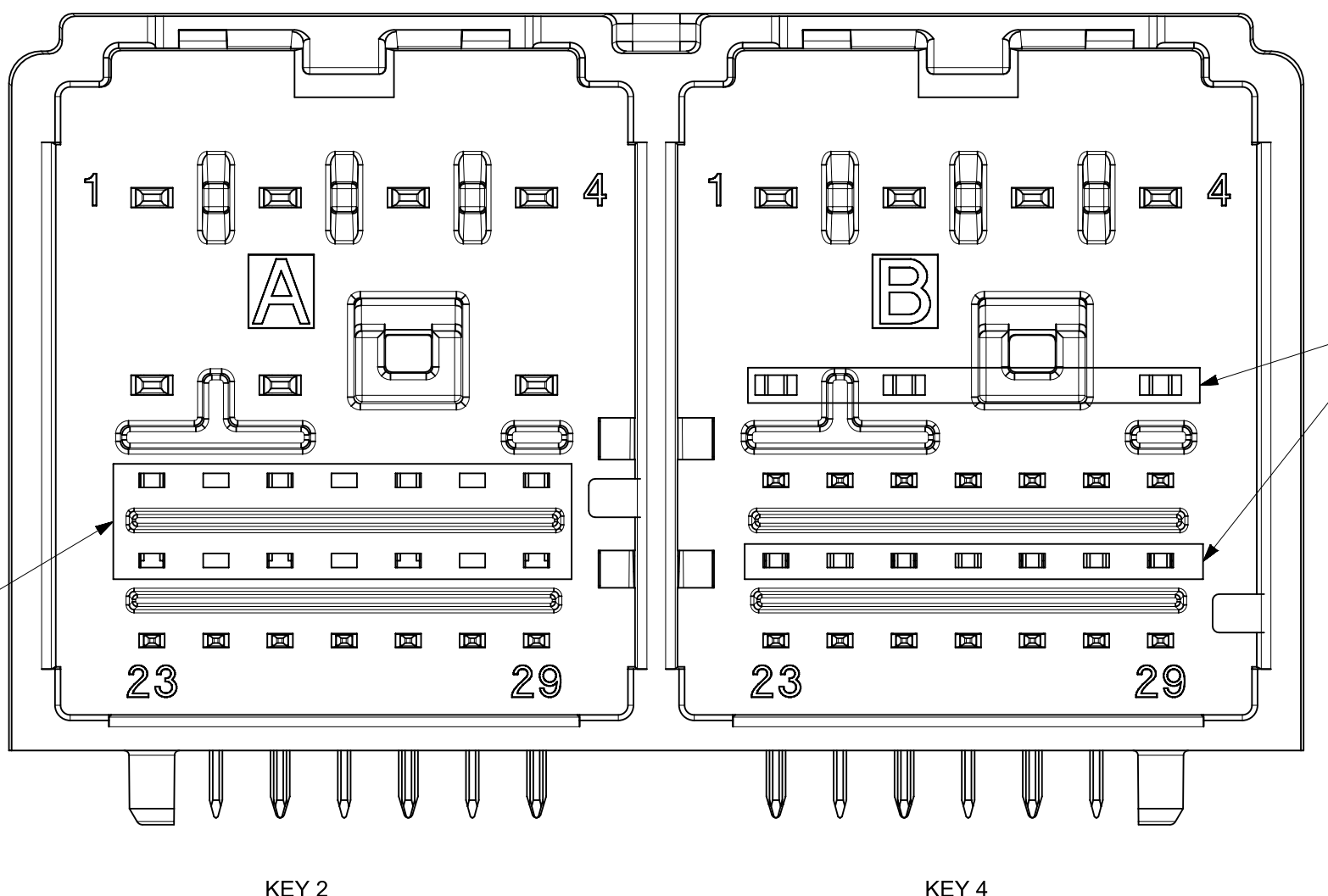
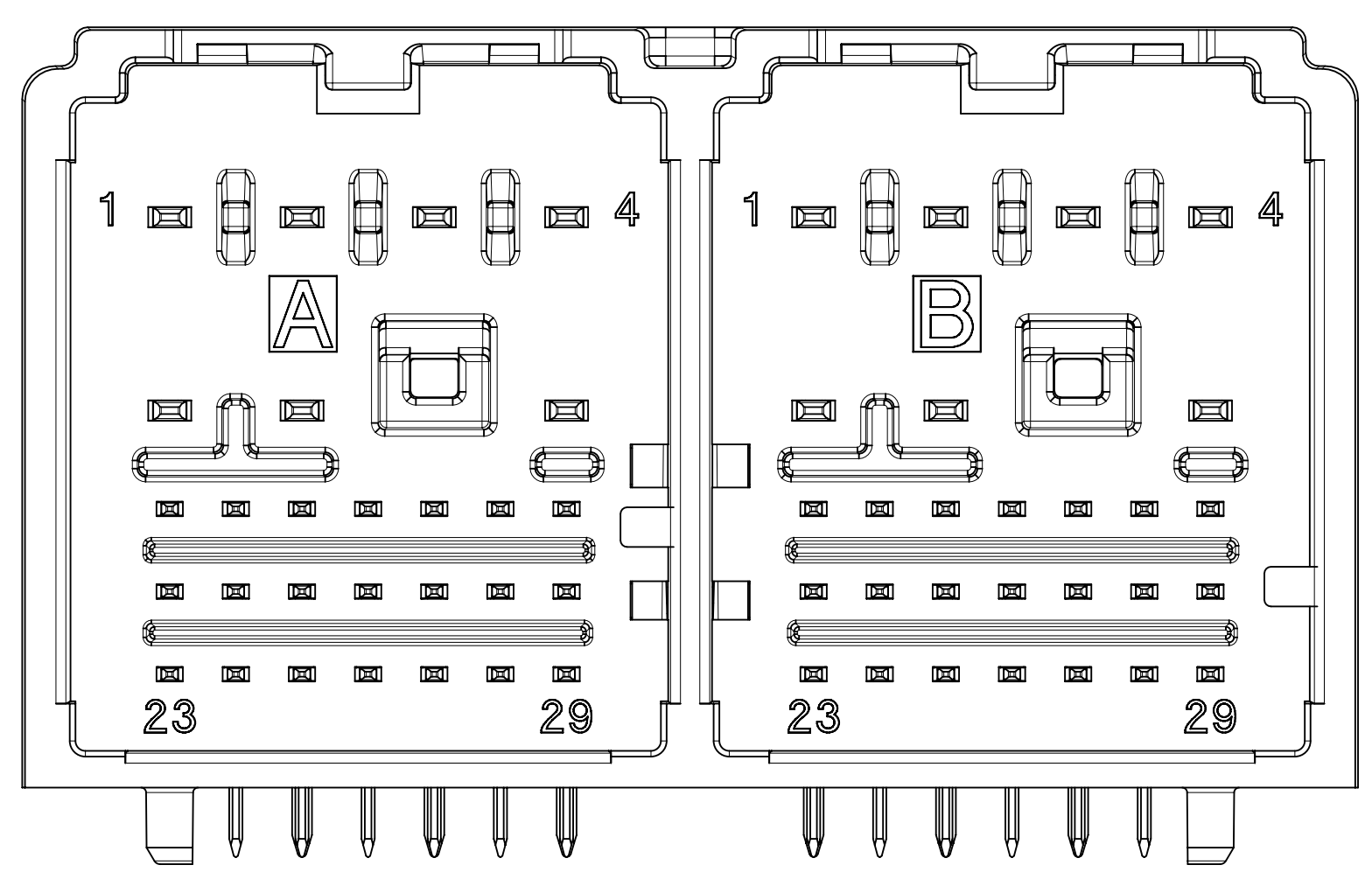


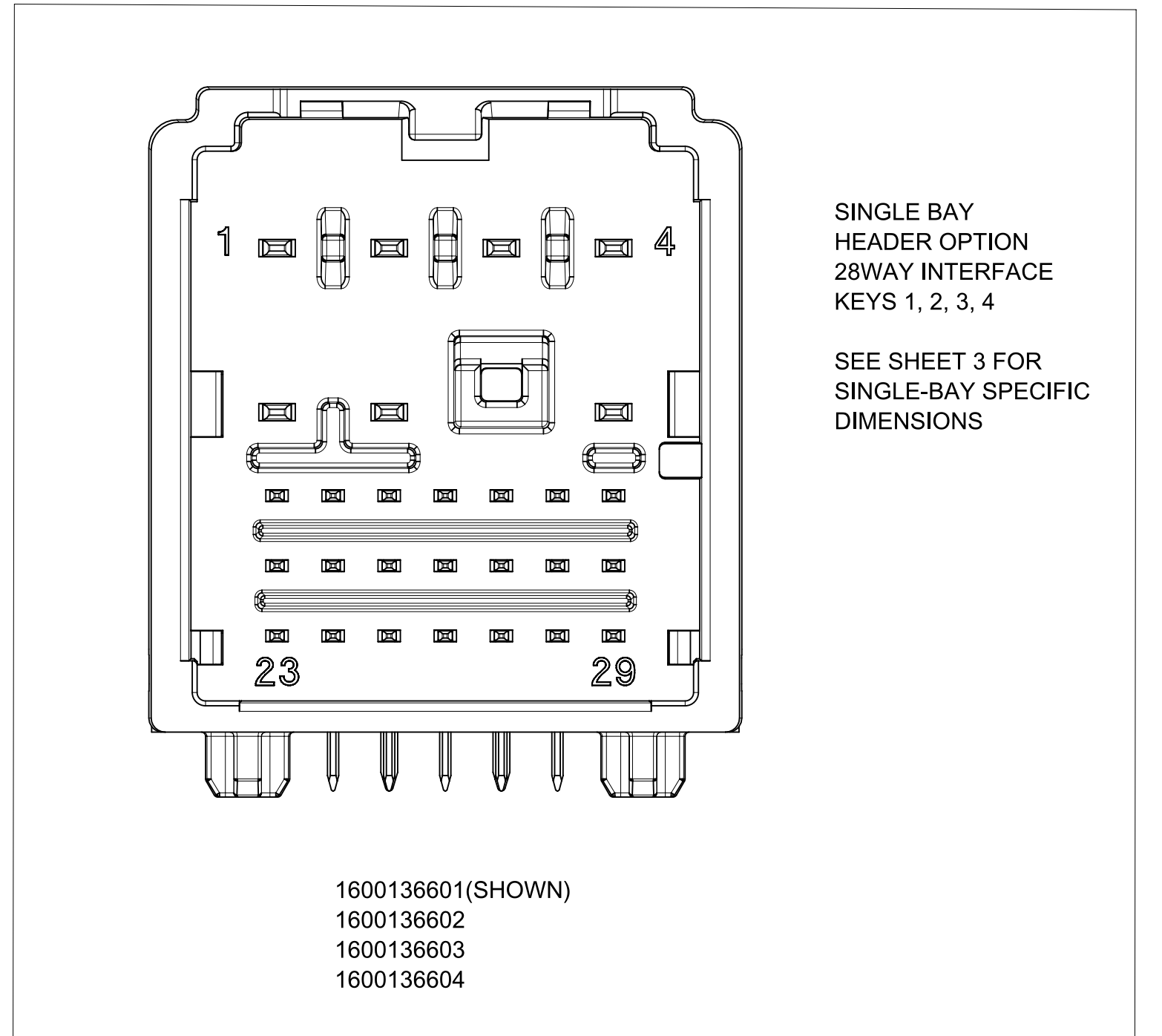
160013X641  
 1600133741  
 1600133841  
 1600134141  
 1600134641  
 1600133941



1600131624 (DEPOPULATED AS SHOWN)  
 1600133624 (USES FULL POPULATION)  
 1600133724 (USES FULL POPULATION)  
 1600133824 (USES FULL POPULATION)

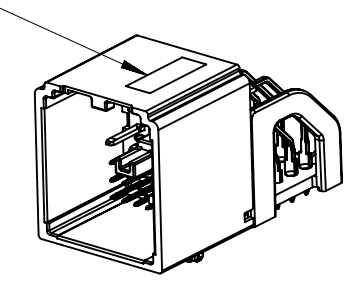


160013X623



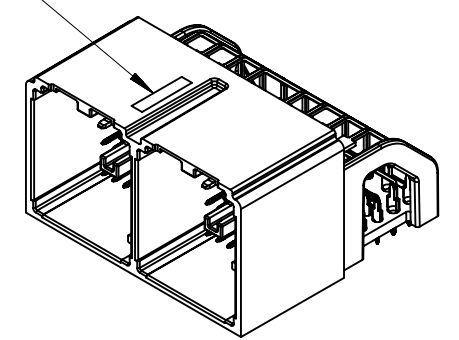
1600136601 (SHOWN)  
 1600136602  
 1600136603  
 1600136604

SEE NOTE 4.B.



Gen1  
 SCALE 1:1

SEE NOTE 4.B.



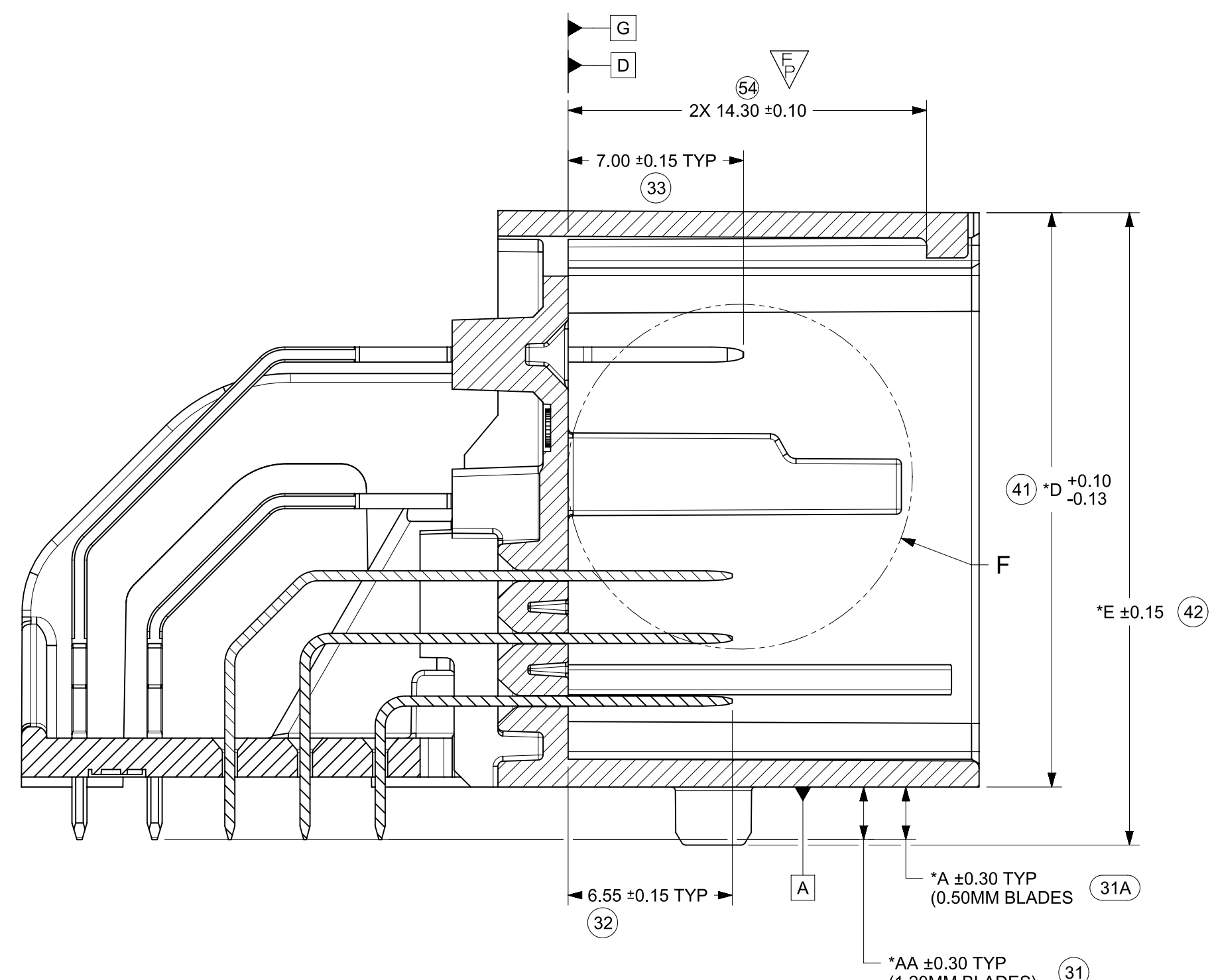
Iso1  
 SCALE 1:1

NOTES: VALID UNLESS OTHERWISE SPECIFIED

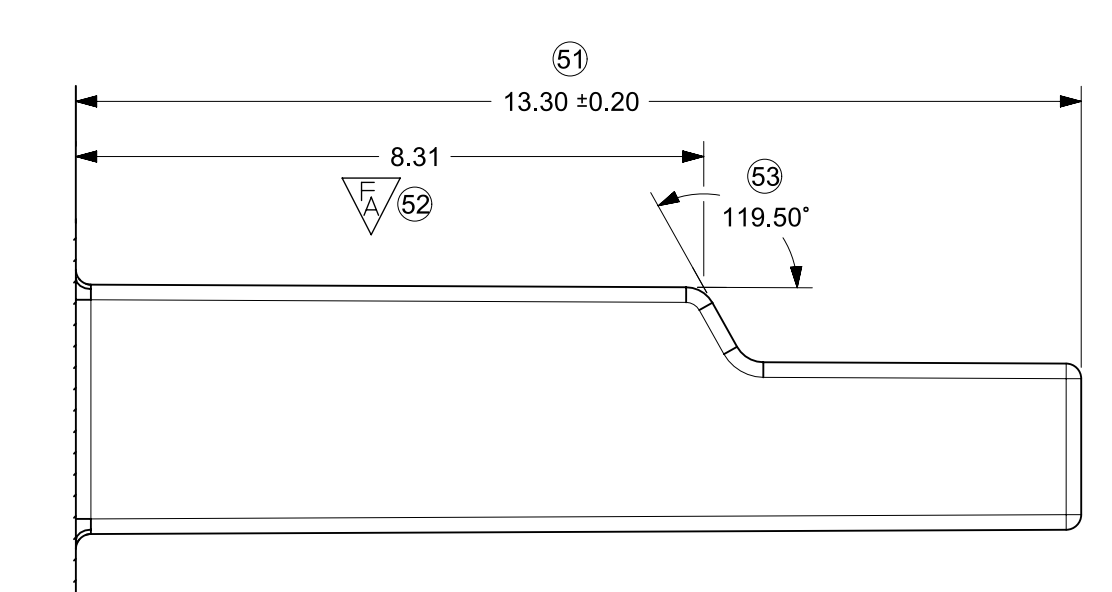
1. GENERAL:
  - a. APPLICATION SPECIFICATION SEE: AS-160013-001
  - b. PRODUCT SPECIFICATION SEE: PS-160013-001
  - c. PACKAGING SPECIFICATION PER BOM TABLE SHEET 4
2. DESIGN - MATERIALS:
  - a. SEE BOM TABLE
  - b. BLADE TERMINALS:
    1. 0.5mm Blades  
 Base Material: Copper Alloy  
 Conductivity ≥28% IACS @ 20°C  
 UNDERPLATING (OVERALL):  
 0.5 - 2.0 μm ELECTRO-DEPOSITED DUCTILE NICKEL SULFAMATE  
 OVERPLATING (OVERALL):  
 0.76 - 1.5 μm ELECTRO-DEPOSITED TIN (REFLOWED)
    2. 1.2mm Blades  
 Base Material: Copper Alloy  
 Conductivity ≥28% IACS @ 20°C  
 UNDERPLATING (OVERALL):  
 1.25 - 2.25 μm ELECTRO-DEPOSITED DUCTILE NICKEL SULFAMATE  
 TOP PLATING:  
 ZONE A (CONNECTOR END):  
 0.76 - 1.5 μm ELECTRO-DEPOSITED TIN REFLOWED  
 ZONE B (PCB END):  
 2.5 - 4.0 μm ELECTRO-DEPOSITED MATTE TIN (NO BRIGHTENERS)
3. DESIGN - GEOMETRY:
  - a. ALL GRAPHIC DATA IS BASIC (NO TOLERANCE) AND MUST BE TAKEN FROM THE DATA FILE AT ITS LATEST REVISION.
  - b. PRODUCT DESIGN MODEL NUMBER(S): SEE BOM TABLE
  - c. GEOMETRIC DIMENSIONS AND TOLERANCES PER ASME Y14.5-2009
  - d. EDGES AND UNDIMENSIONED DETAILS PER ISO13715
  - e. CORNERS SHOWN AS SHARP TO BE R 0.2 MAX.
  - f. LETTERING SHALL BE MAX POSSIBLE FOR READABILITY.  
 THIS INCLUDES RECYCLING CODE, CAVITY ID, VENDOR IDENTIFICATION
  - g. FOR BAY/POCKET DEFINITION SEE MOLEX INTERFACE DRAWING SD-160014-002, FOR ANY CONFLICTING DIMENSIONS OR TOLERANCES, SD-160013-0001 IS THE OVERRIDING DOCUMENT.
  - h. MATING HARNESS CONNECTORS MOLEX PN: 1600140001 (Key 1)  
 1600140002 (Key 2)  
 1600140003 (Key 3)  
 1600140004 (Key 4)
4. DESIGN - MANUFACTURING:
  - a. VISUAL DEFECTS SHALL MEET COSMETIC STANDARD PS-45499-002 (Class B)
  - b. HUMAN READABLE LASER MARKING
    1. INFORMATION  
 DDDYY: JULIAN DATE CODE  
 XXXXX: 5 DIGIT SERIAL NO.
    2. SIZE  
 HUMAN LEGIBLE
  - c. PIN MATE SIDE AND PCB SIDE TRUE POSITION TO BE VERIFIED ON-LINE WITH A GO/NO-GO FUNCTIONAL GAGE
  - d. REFLOW SOLDERABILITY PER SMES-152

|     |   |
|-----|---|
| A21 | CHANGE 1600133941 PACKAGE TO TRAY PACK(STANDRD)-BLACK<br>ECN#: CO-000001199<br>Kun Du 8/25/2022               |
| A20 | ADDED NEW PART NO.:1600133941<br>CHANGE 1600133741 PACKAGE TO TRAY PACK(STANDARD)                             |
| A19 | RELEASED 56CKT V0<br>KEY 2 / KEY 4 HEADERS<br>1600133724 AND 1600133824<br>ECN#: 664151<br>J. PATE 05/17/2021 |
| A18 | PRODUCTION RELEASE OF V0<br>HEADER ASSEMBLIES<br>ECN#: 648090<br>J. PATE 10/23/2020                           |
| A17 | - ADDED V0 HEADER ASSEMBLIES<br>- REMOVED OBSOLETE BOMS<br>ENGINEERING RECORD: 636592<br>JPATE 04/05/2020     |

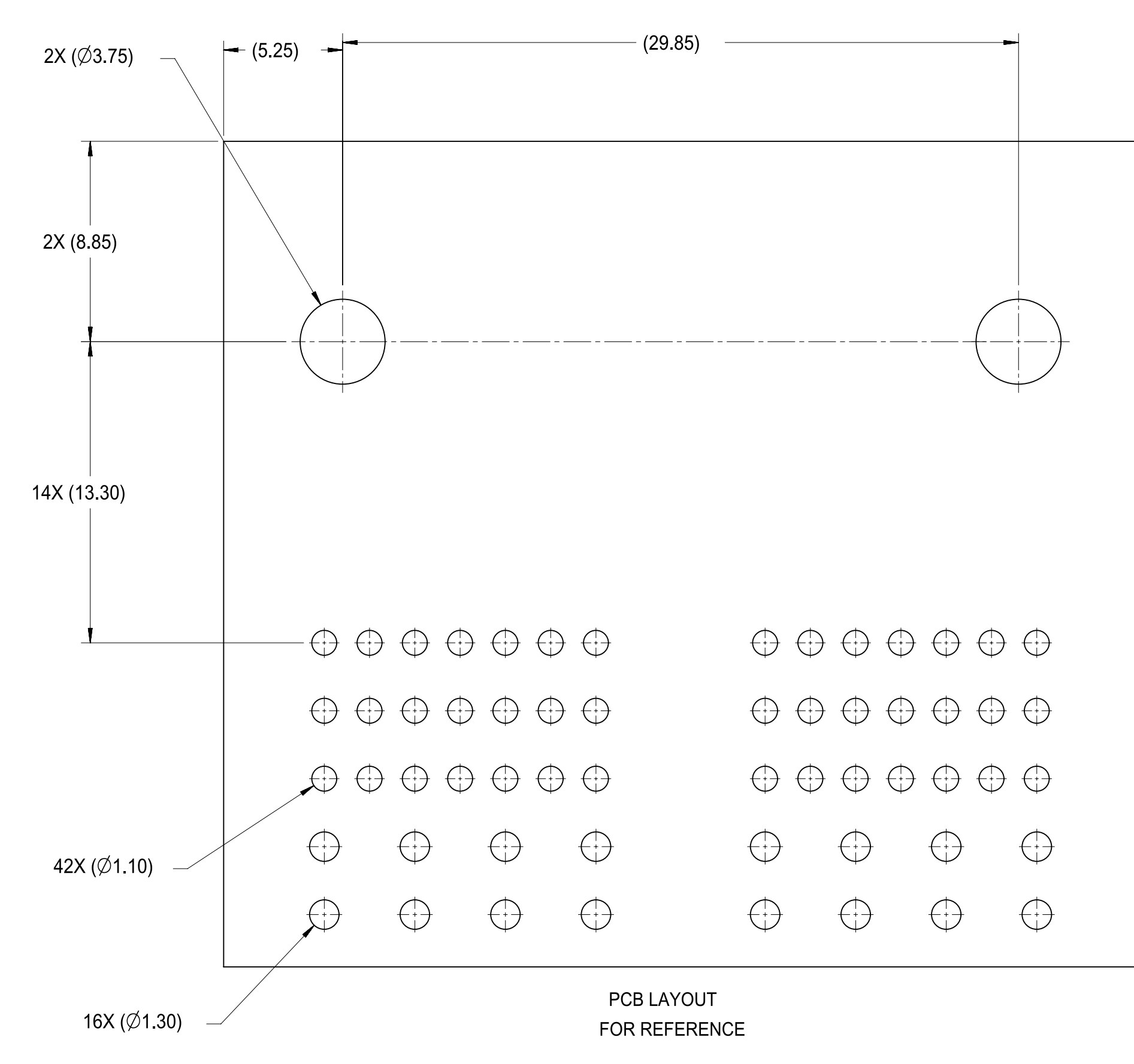
|  |   |                          |                                      |            |   |
|--|---|--------------------------|--------------------------------------|------------|---|
| FUNCTIONAL SYMBOLS                                   | THIS DRAWING CONTAINS INFORMATION THAT IS PROPRIETARY TO MOLEX ELECTRONIC TECHNOLOGIES, LLC AND SHOULD NOT BE USED WITHOUT WRITTEN PERMISSION |                          | CURRENT REV DESC: SEE REVISION SHEET |            | <b>molex</b>                            |
|  | DIMENSION UNITS   | SCALE                    |                                      |            |   |
| FA = 0   | mm  | 5:1                      |                                      |            | INFOTAINMENT HDR ASSY<br>STAK50H SYSTEM |
| FC = 0   | GENERAL TOLERANCES (UNLESS SPECIFIED)   |                          |                                      |            |   |
| FD = 0   | ANGULAR TOL ± 3.0°  |                          |                                      |            | PRODUCT SALES DRAWING                   |
| DIVISIONAL SYMBOLS                                   | 4 PLACES  | ±                        | PHASE: Design Production             |            |   |
|  | 3 PLACES  | ±                        | CO NO: CO-000001199                  | 2022-08-25 |   |
|  | 2 PLACES  | ± 0.130                  | DRWN: Kun Du                         | 2022-08-30 |   |
|  | 1 PLACE   | ± 0.25                   | CHK'D: Ringo Hu                      | 2022-09-19 |   |
| 0 PLACES   | ±   | APPR: Mike Vanslambrouck |                                      |            |   |
| DRAFT WHERE APPLICABLE MUST REMAIN WITHIN DIMENSIONS |   | THIRD ANGLE PROJECTION   | DRAWING                              | SERIES     | DOCUMENT NUMBER                         |
|  |   |                          | D-SIZE                               | 160013     | SD-160013-0001                          |
|  |   |                          |                                      |            | DOC TYPE                                |
|  |   |                          |                                      |            | PSD                                     |
|  |   |                          |                                      |            | DOC PART                                |
|  |   |                          |                                      |            | 001                                     |
|  |   |                          |                                      |            | REVISION                                |
|  |   |                          |                                      |            | A21                                     |
|  |   |                          |                                      |            | MATERIAL NUMBER                         |
|  |   |                          |                                      |            | GENERAL MARKET                          |
|  |   |                          |                                      |            | CUSTOMER                                |
|  |   |                          |                                      |            | SHEET NUMBER                            |
|  |   |                          |                                      |            | 1 OF 4                                  |



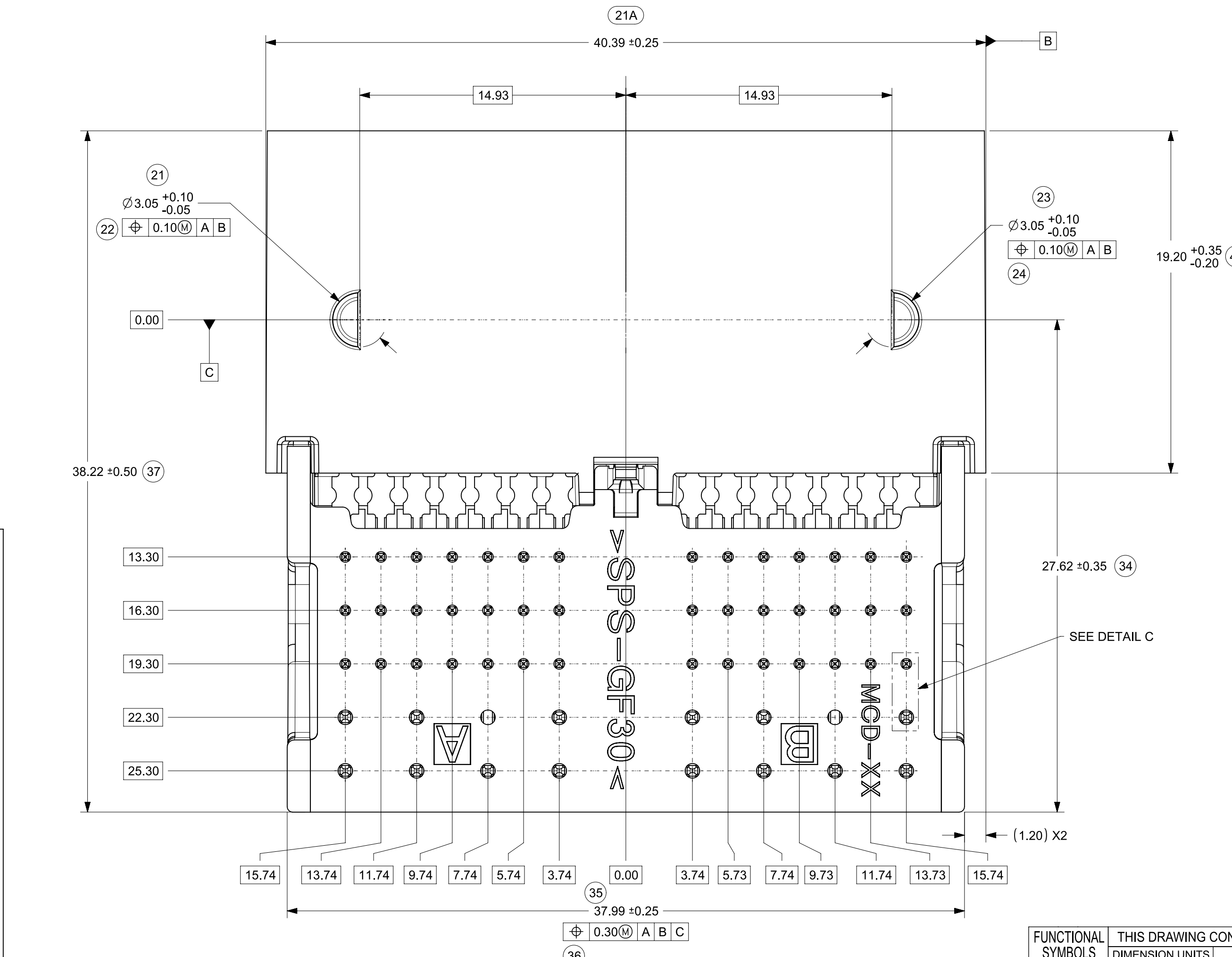
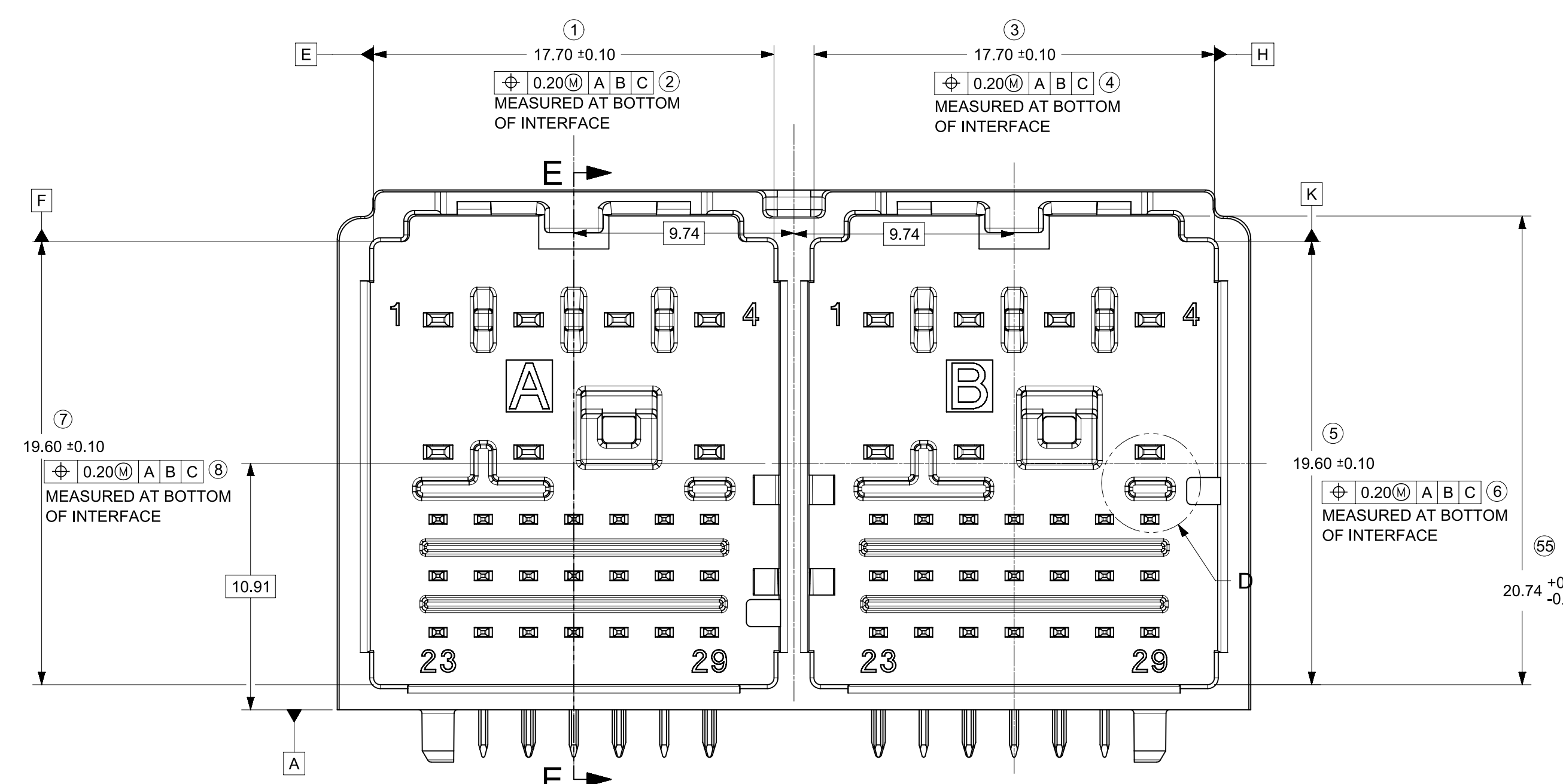
SECTION E-E



DETAIL F  
SCALE 10:1

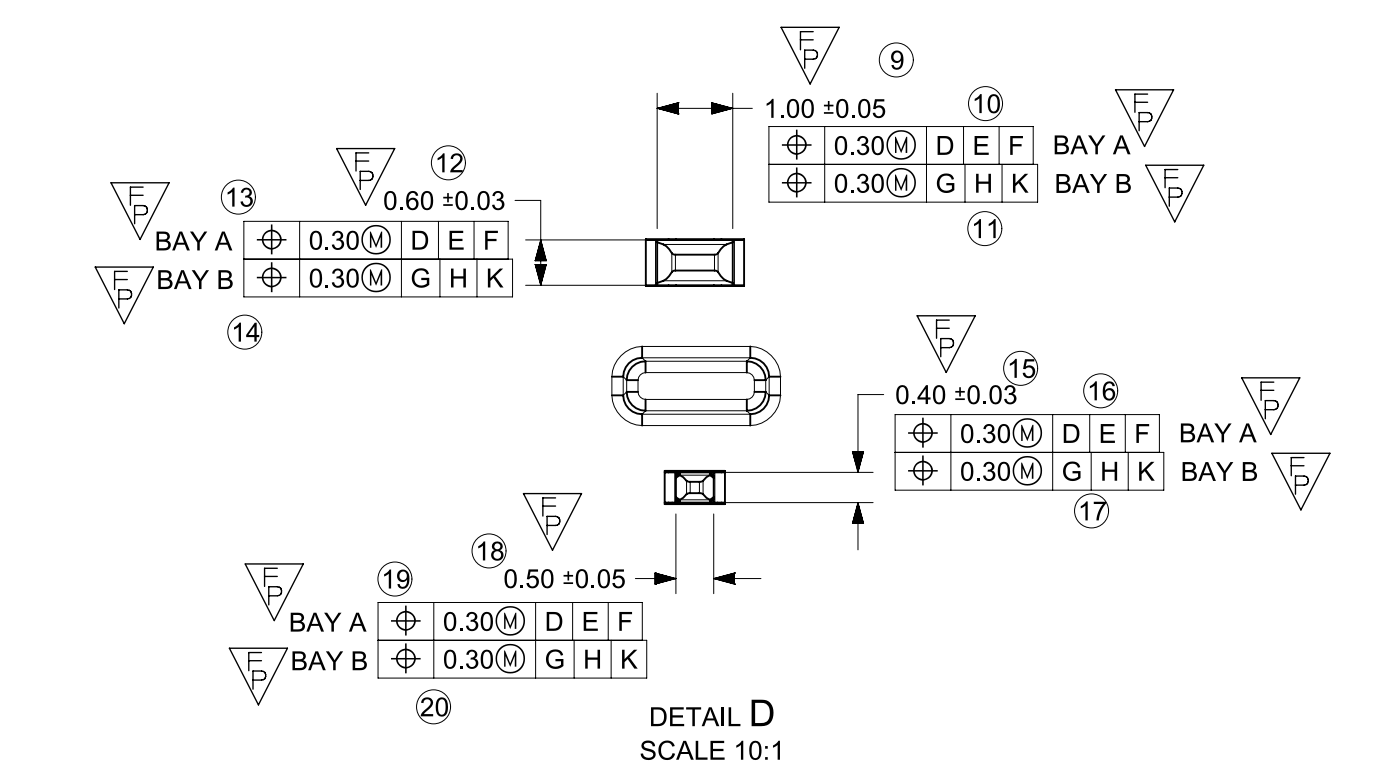


PCB LAYOUT  
FOR REFERENCE

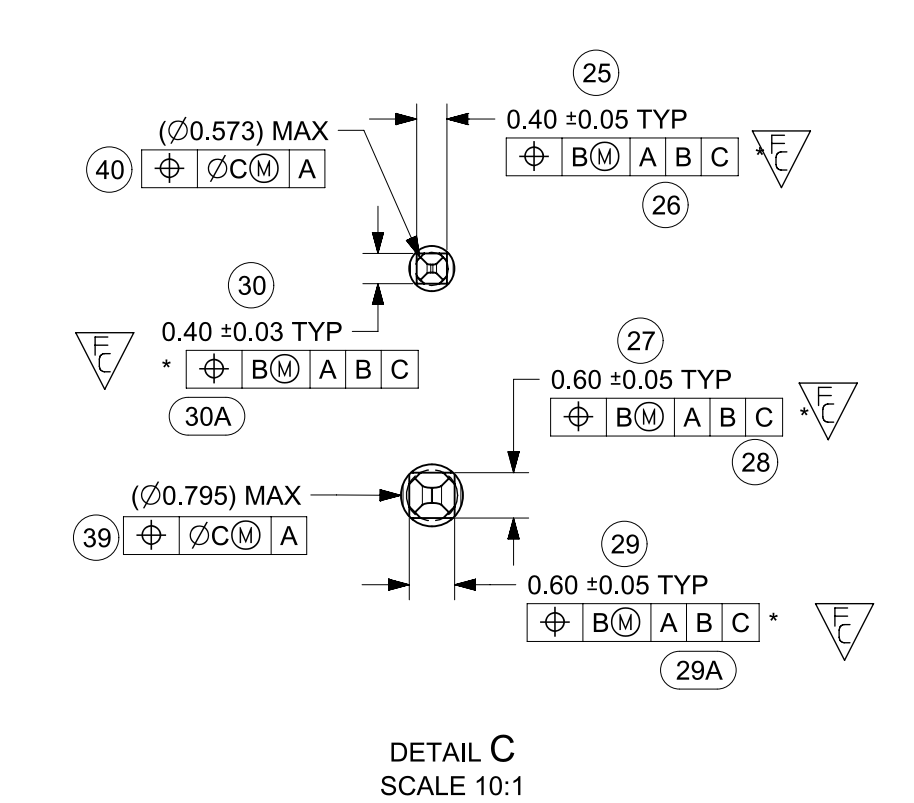


| HEADER ASSEMBLY OPTIONS |        |         |        |        |        |        |
|-------------------------|--------|---------|--------|--------|--------|--------|
| PART NUMBER             | DIM A* | DIM AA* | DIM B* | DIM C* | DIM *D | DIM *E |
| 1600130641              | 2.1    | 2.1     | 0.40   | 0.37   | 22.92  | 25.23  |
| 1600132641              | 2.1    | 2.1     | 0.40   | 0.37   | 22.92  | 25.23  |
| 1600130623              | 2.1    | 2.1     | 0.40   | 0.37   | 22.92  | 25.23  |
| 1600132623              | 2.1    | 2.1     | 0.40   | 0.37   | 22.92  | 25.23  |
| 1600131624              | 2.5    | 2.5     | 0.53   | 0.50   | 22.92  | 25.23  |
| 1600133641              | 2.5    | 2.5     | 0.53   | 0.50   | 22.92  | 25.23  |
| 1600133623              | 2.5    | 2.5     | 0.53   | 0.50   | 22.92  | 25.23  |
| 160013660X              | 2.5    | 2.5     | 0.53   | 0.50   | 22.92  | 25.23  |
| 1600134623              | 2.5    | 3.0     | 0.68   | 0.65   | 22.92  | 25.23  |
| 1600134141              | 2.5    | 3.0     | 0.68   | 0.65   | 22.92  | 25.23  |
| 1600134641              | 2.5    | 3.0     | 0.68   | 0.65   | 22.92  | 25.23  |
| 1600133624              | 2.5    | 2.5     | 0.53   | 0.50   | 22.92  | 25.23  |
| 1600133724              | 2.5    | 2.5     | 0.53   | 0.50   | 23.23  | 25.54  |
| 1600133741              | 2.5    | 2.5     | 0.53   | 0.50   | 22.92  | 25.23  |
| 1600133823              | 2.5    | 2.5     | 0.53   | 0.50   | 23.23  | 25.54  |
| 1600133824              | 2.5    | 2.5     | 0.53   | 0.50   | 23.23  | 25.54  |
| 1600133841              | 2.5    | 2.5     | 0.53   | 0.50   | 23.23  | 25.54  |
| 1600133941              | 2.5    | 2.5     | 0.53   | 0.50   | 22.92  | 25.23  |

\*X=1 / 2 / 3 / 4;



DETAIL D  
SCALE 10:1



DETAIL C  
SCALE 10:1

|  |   |                          |                                      |            |
|--|---|--------------------------|--------------------------------------|------------|
| FUNCTIONAL SYMBOLS<br>FA = 0<br>FE = 0<br>FP = 0     | THIS DRAWING CONTAINS INFORMATION THAT IS PROPRIETARY TO MOLEX ELECTRONIC TECHNOLOGIES, LLC AND SHOULD NOT BE USED WITHOUT WRITTEN PERMISSION |                          | CURRENT REV DESC: SEE REVISION SHEET |            |
|  | DIMENSION UNITS   | SCALE                    |                                      |            |
| DIVISIONAL SYMBOLS                                   | mm  | 5:1                      |                                      |            |
|  | GENERAL TOLERANCES (UNLESS SPECIFIED)   |                          |                                      |            |
|  | ANGULAR TOL   | ± 3.0°                   |                                      |            |
|  | 4 PLACES  | ±                        |                                      |            |
|  | 3 PLACES  | ±                        |                                      |            |
|  | 2 PLACES  | ± 0.130                  |                                      |            |
|  | 1 PLACE   | ± 0.25                   |                                      |            |
|  | 0 PLACES  | ±                        |                                      |            |
| DRAFT WHERE APPLICABLE MUST REMAIN WITHIN DIMENSIONS |   | THIRD ANGLE PROJECTION   | DRAWING                              | SERIES     |
|  |   |                          | D-SIZE                               | 160013     |
|  |   | PHASE: Design Production |                                      |            |
|  |   | CO NO: CO-000001199      |                                      | 2022-08-25 |
|  |   | DRWN: Kun Du             |                                      | 2022-08-30 |
|  |   | CHK'D: Ringo Hu          |                                      | 2022-09-19 |
|  |   | APPR: Mike Vanslambrouck |                                      |            |
|  |   | INITIAL REVISION:        |                                      |            |
|  |   | DRWN: RFC_PLMIMP         |                                      |            |
|  |   | APPR:                    |                                      |            |
|  |   | DOCUMENT NUMBER          | DOC TYPE                             | DOC PART   |
|  |   | SD-160013-0001           | PSD                                  | 001 A21    |
|  |   | CUSTOMER                 | SHEET NUMBER                         |            |
|  |   | GENERAL MARKET           | 2 OF 4                               |            |

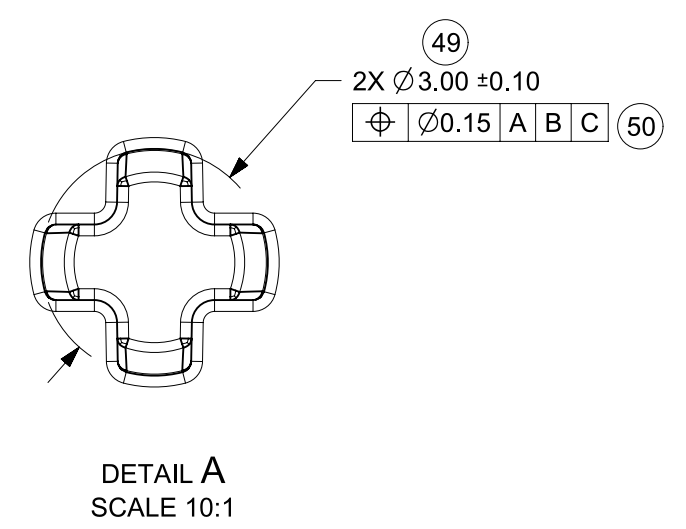
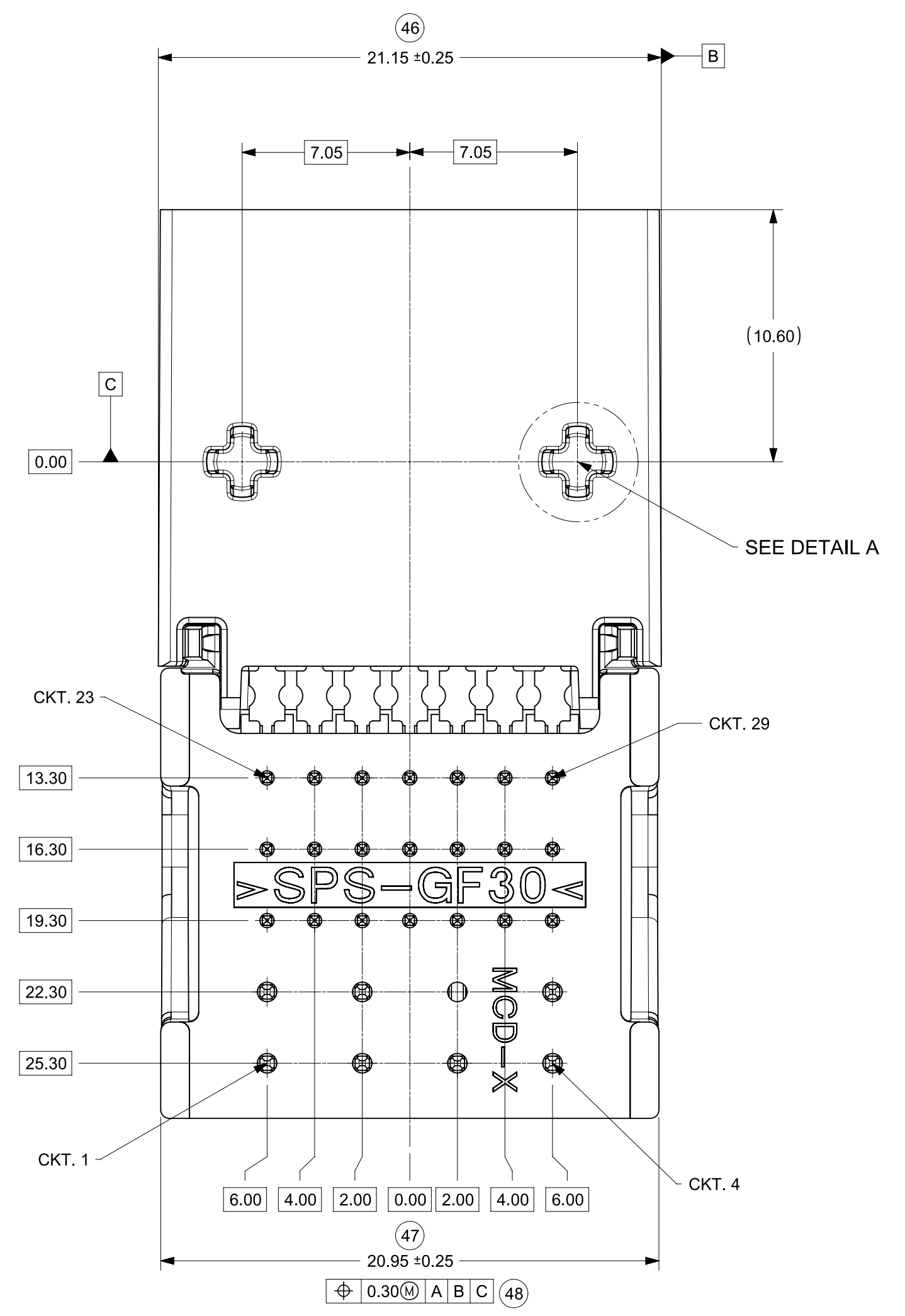
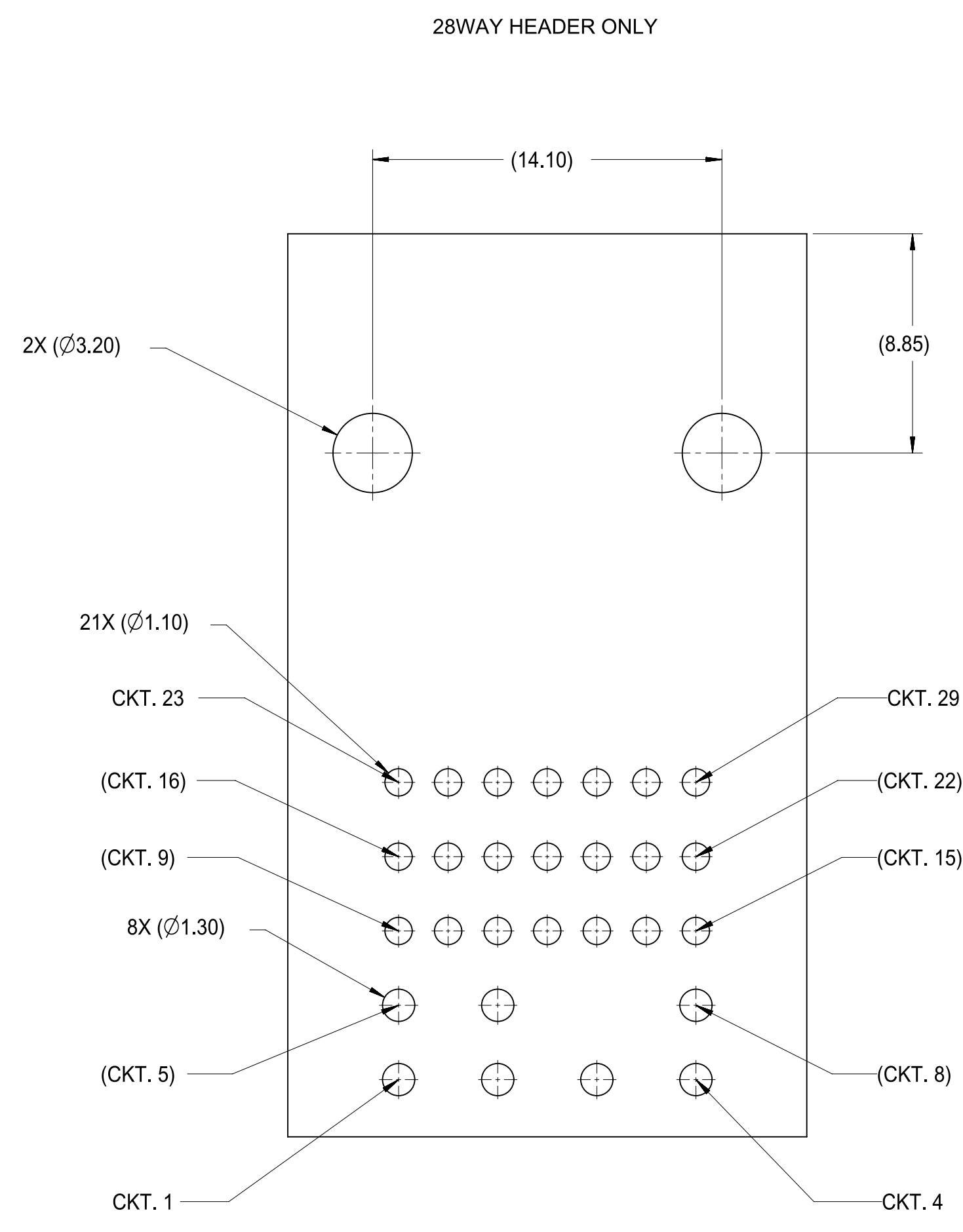
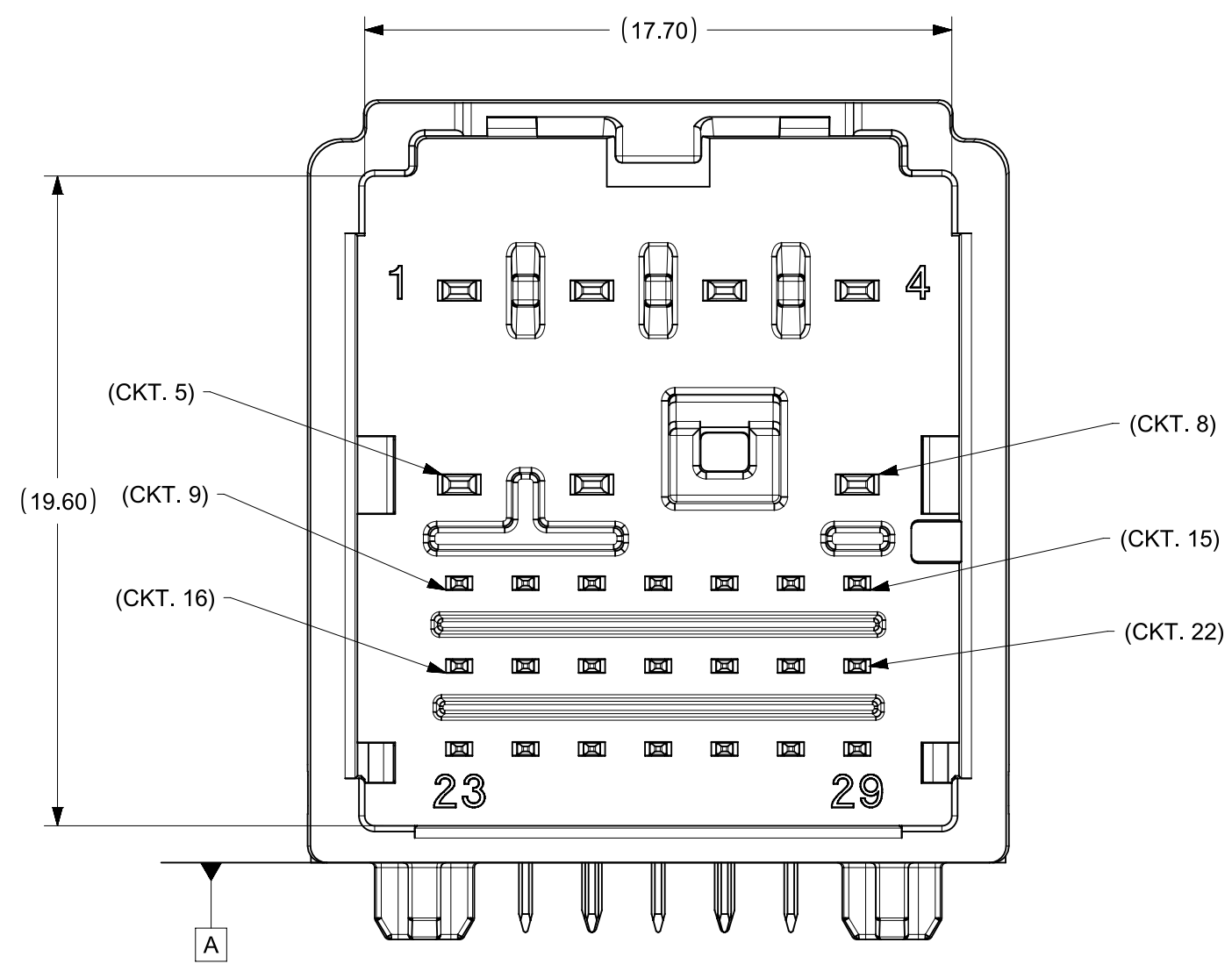
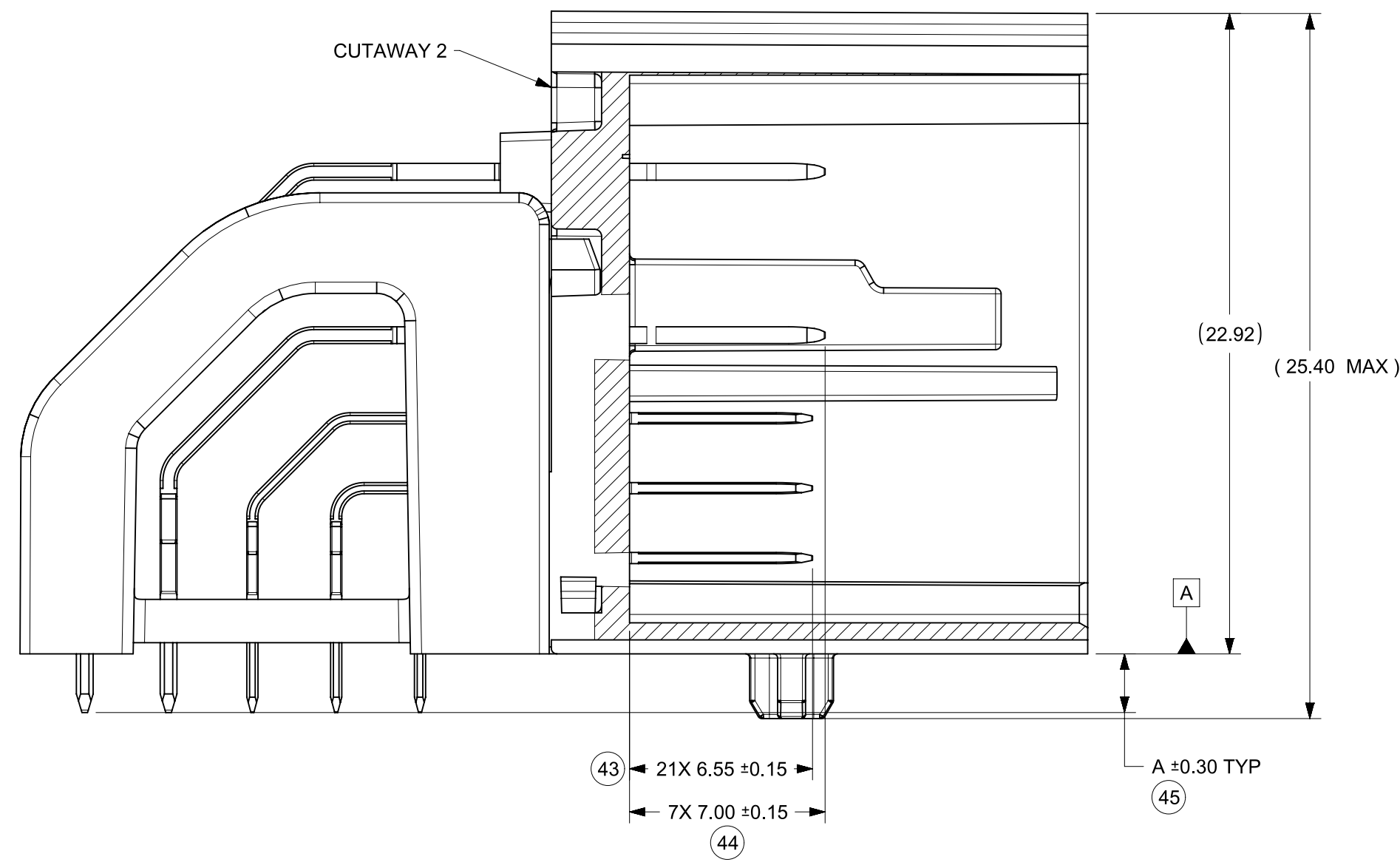
**molex**

INFOTAINMENT HDR ASSY  
STAK50H SYSTEM

PRODUCT SALES DRAWING

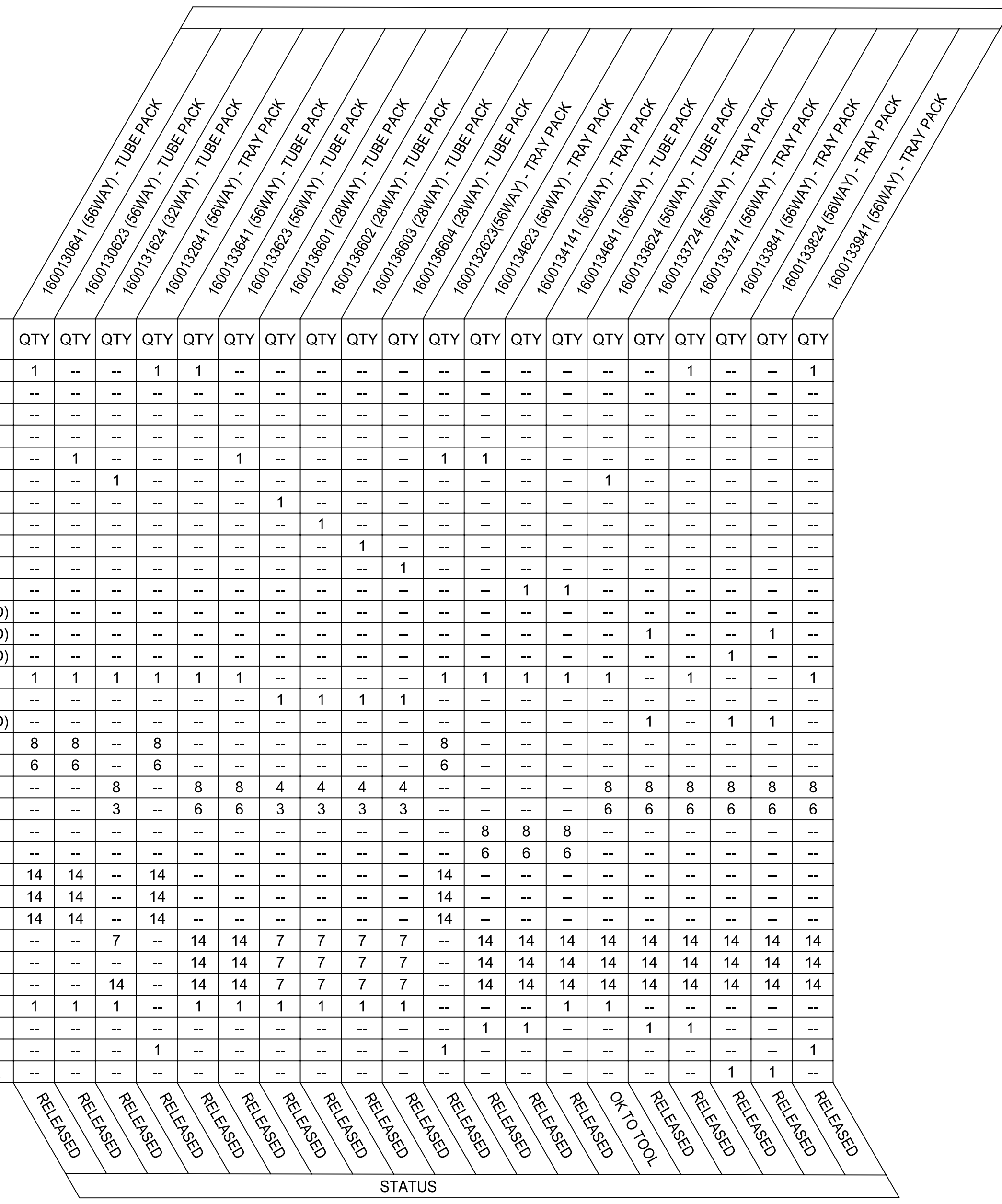
DOCUMENT NUMBER: SD-160013-0001  
DOC TYPE: PSD  
DOC PART: 001  
REVISION: A21

CUSTOMER: GENERAL MARKET  
SHEET NUMBER: 2 OF 4



|  |   |       |                                      |         |  |               |  |
|--|---|-------|--------------------------------------|---------|--|---------------|--|
| FUNCTIONAL SYMBOLS                                   | THIS DRAWING CONTAINS INFORMATION THAT IS PROPRIETARY TO MOLEX ELECTRONIC TECHNOLOGIES, LLC AND SHOULD NOT BE USED WITHOUT WRITTEN PERMISSION |       | CURRENT REV DESC: SEE REVISION SHEET |         |  |               |  |
|  | DIMENSION UNITS   | SCALE |                                      |         |  |               |  |
| $F_A = 0$  | mm  | 5:1   | PHASE: Design Production             |         | <b>INFOTAINMENT HDR ASSY<br/>STAK50H SYSTEM</b>  |               |  |
| $F_C = 0$  | GENERAL TOLERANCES (UNLESS SPECIFIED)   |       | CO NO: CO-000001199                  |         |  |               |  |
| $F_P = 0$  | ANGULAR TOL ± 3.0°  |       | DRWN: Kun Du 2022-08-25              |         | <b>PRODUCT SALES DRAWING</b>   |               |  |
| DIVISIONAL SYMBOLS                                   | 4 PLACES ±  |       | CHK'D: Ringo Hu 2022-08-30           |         |  |               |  |
|  | 3 PLACES ±  |       | APPR: Mike Vanslambrouck 2022-09-19  |         | DOCUMENT NUMBER: <b>SD-160013-0001</b> DOC TYPE: PSD    DOC PART: 001    REVISION: A21 |               |  |
|  | 2 PLACES ± 0.130  |       | INITIAL REVISION:                    |         |  |               |  |
|  | 1 PLACE ± 0.25  |       | DRWN: RFC_PLMIMP                     |         | MATERIAL NUMBER: <b>160013</b> CUSTOMER: GENERAL MARKET    SHEET NUMBER: 3 OF 4        |               |  |
|  | 0 PLACES ±  |       | APPR:                                |         |  |               |  |
| DRAFT WHERE APPLICABLE MUST REMAIN WITHIN DIMENSIONS |   |       | THIRD ANGLE PROJECTION               | DRAWING | SERIES   | D-SIZE 160013 |  |

| COMPONENT TYPE              | ITEM NO.   | PART NUMBER                     | DESCRIPTION                      | MATERIAL     | COLOR | FLAMABILITY RATING | DRAWING         | QTY | QTY | QTY | QTY | QTY | QTY | QTY | QTY | QTY | QTY | QTY | QTY | QTY | QTY | QTY | QTY | QTY | QTY | QTY | QTY | QTY | QTY |
|-----------------------------|------------|---------------------------------|----------------------------------|--------------|-------|--------------------|-----------------|-----|-----|-----|-----|-----|-----|-----|-----|-----|-----|-----|-----|-----|-----|-----|-----|-----|-----|-----|-----|-----|-----|
| HEADER                      | 1          | 1600136500                      | HEADER SHROUD KEY 4 & 1 (2 BAY)  | SPS-GF30     | GRAY  | HB                 | E-160013-0500   | 1   | --  | --  | 1   | 1   | --  | --  | --  | --  | --  | --  | --  | --  | --  | --  | 1   | --  | --  | 1   | --  | --  |     |
|                             | 2          | 1600136542                      | HEADER SHROUD KEY 4 & 2 (2 BAY)  | SPS-GF30     | GRAY  | HB                 | E-160013-0500   | --  | --  | --  | --  | --  | --  | --  | --  | --  | --  | --  | --  | --  | --  | --  | --  | --  | --  | --  | --  | --  | --  |
|                             | 3          | 1600136543                      | HEADER SHROUD KEY 4 & 3 (2 BAY)  | SPS-GF30     | GRAY  | HB                 | E-160013-0500   | --  | --  | --  | --  | --  | --  | --  | --  | --  | --  | --  | --  | --  | --  | --  | --  | --  | --  | --  | --  | --  | --  |
|                             | 4          | 1600136521                      | HEADER SHROUD KEY 2 & 1 (2 BAY)  | SPS-GF30     | GRAY  | HB                 | E-160013-0500   | --  | --  | --  | --  | --  | --  | --  | --  | --  | --  | --  | --  | --  | --  | --  | --  | --  | --  | --  | --  | --  | --  |
|                             | 5          | 1600136523                      | HEADER SHROUD KEY 2 & 3 (2 BAY)  | SPS-GF30     | GRAY  | HB                 | E-160013-0500   | --  | 1   | --  | --  | --  | 1   | --  | --  | --  | 1   | 1   | --  | --  | --  | --  | --  | --  | --  | --  | --  | --  | --  |
|                             | 6          | 1600136524                      | HEADER SHROUD KEY 2 & 4 (2 BAY)  | SPS-GF30     | GRAY  | HB                 | E-160013-0500   | --  | --  | 1   | --  | --  | --  | --  | --  | --  | --  | --  | --  | 1   | --  | --  | --  | --  | --  | --  | --  | --  | --  |
|                             | 7          | 1600136551                      | HEADER SHROUD KEY 1 (1 BAY)      | SPS-GF30     | GRAY  | HB                 | E-160013-0500   | --  | --  | --  | --  | --  | 1   | --  | --  | --  | --  | --  | --  | --  | --  | --  | --  | --  | --  | --  | --  | --  | --  |
|                             | 8          | 1600136552                      | HEADER SHROUD KEY 2 (1 BAY)      | SPS-GF30     | GRAY  | HB                 | E-160013-0500   | --  | --  | --  | --  | --  | 1   | --  | --  | --  | --  | --  | --  | --  | --  | --  | --  | --  | --  | --  | --  | --  | --  |
|                             | 9          | 1600136553                      | HEADER SHROUD KEY 3 (1 BAY)      | SPS-GF30     | GRAY  | HB                 | E-160013-0500   | --  | --  | --  | --  | --  | --  | 1   | --  | --  | --  | --  | --  | --  | --  | --  | --  | --  | --  | --  | --  | --  | --  |
|                             | 10         | 1600136554                      | HEADER SHROUD KEY 4 (1 BAY)      | SPS-GF30     | GRAY  | HB                 | E-160013-0500   | --  | --  | --  | --  | --  | --  | --  | 1   | --  | --  | --  | --  | --  | --  | --  | --  | --  | --  | --  | --  | --  | --  |
|                             | 11         | 1600132541                      | HEADER SHROUD KEY 4 & 1 (2 BAY)  | SPS-GF30     | BLACK | HB                 | E-160013-0500   | --  | --  | --  | --  | --  | --  | --  | --  | --  | 1   | 1   | --  | --  | --  | --  | --  | --  | --  | --  | --  | --  | --  |
|                             | 12         | 1600136723                      | HEADER SHROUD KEY 2 & 3 (2 BAY)  | PA9T-GF30    | BLACK | V0                 | 1600136741(PDD) | --  | --  | --  | --  | --  | --  | --  | --  | --  | --  | --  | --  | --  | --  | --  | --  | --  | --  | --  | --  | --  | --  |
|                             | 13         | 1600136724                      | HEADER SHROUD KEY 2 & 4 (2 BAY)  | PA9T-GF30    | BLACK | V0                 | 1600136741(PDD) | --  | --  | --  | --  | --  | --  | --  | --  | --  | --  | --  | 1   | --  | --  | 1   | --  | --  | --  | 1   | --  | --  | --  |
| 14                          | 1600136741 | HEADER SHROUD KEY 4 & 1 (2 BAY) | PA9T-GF30                        | BLACK        | V0    | 1600136741(PDD)    | --              | --  | --  | --  | --  | --  | --  | --  | --  | --  | --  | --  | 1   | --  | 1   | --  | --  | 1   | --  | --  | --  | --  |     |
| PIN ALIGNMENT PLATE         | 15         | 1600130700                      | PIN ALIGNMENT PLATE (2 BAY)      | SPS-GF30     | GRAY  | HB                 | E-160013-0700   | 1   | 1   | 1   | 1   | 1   | 1   | --  | --  | --  | 1   | 1   | 1   | 1   | 1   | 1   | --  | 1   | --  | --  | 1   | --  |     |
|                             | 16         | 1600130710                      | PIN ALIGNMENT PLATE (1 BAY)      | SPS-GF30     | GRAY  | HB                 | E-160013-0710   | --  | --  | --  | --  | --  | 1   | 1   | 1   | 1   | --  | --  | --  | --  | --  | --  | --  | --  | --  | --  | --  | --  |     |
|                             | 17         | 1600130720                      | PIN ALIGNMENT PLATE (2 BAY)      | PA9T-GF30    | BLACK | V0                 | 1600130720(PDD) | --  | --  | --  | --  | --  | --  | --  | --  | --  | --  | --  | 1   | --  | 1   | 1   | --  | --  | 1   | --  | --  | --  |     |
| PLATED 1.2MM BLADE TERMINAL | 18         | 1600130111                      | 1.2MM BLADE - LONG               | PLATED BRASS | N/A   | N/A                | E-160013-0100   | 8   | 8   | --  | 8   | --  | --  | --  | --  | --  | 8   | --  | --  | --  | --  | --  | --  | --  | --  | --  | --  | --  |     |
|                             | 19         | 1600130112                      | 1.2MM BLADE - SHORT              | PLATED BRASS | N/A   | N/A                | E-160013-0100   | 6   | 6   | --  | 6   | --  | --  | --  | --  | 6   | --  | --  | --  | --  | --  | --  | --  | --  | --  | --  | --  | --  |     |
|                             | 20         | 1600130114                      | 1.2MM BLADE - LONG OPTION 2      | PLATED BRASS | N/A   | N/A                | E-160013-0100   | --  | --  | 8   | --  | 8   | 4   | 4   | 4   | 4   | --  | --  | --  | 8   | 8   | 8   | 8   | 8   | 8   | 8   | 8   | 8   |     |
|                             | 21         | 1600130113                      | 1.2MM BLADE - SHORT OPTION 2     | PLATED BRASS | N/A   | N/A                | E-160013-0100   | --  | --  | 3   | --  | 6   | 6   | 3   | 3   | 3   | 3   | --  | --  | --  | 6   | 6   | 6   | 6   | 6   | 6   | 6   | 6   | 6   |
|                             | 22         | 1600130116                      | 1.2MM BLADE - LONG OPTION 3      | PLATED BRASS | N/A   | N/A                | E-160013-0100   | --  | --  | --  | --  | --  | --  | --  | --  | --  | --  | 8   | 8   | 8   | --  | --  | --  | --  | --  | --  | --  | --  | --  |
|                             | 23         | 1600130115                      | 1.2MM BLADE - SHORT OPTION 3     | PLATED BRASS | N/A   | N/A                | E-160013-0100   | --  | --  | --  | --  | --  | --  | --  | --  | --  | 6   | 6   | 6   | --  | --  | --  | --  | --  | --  | --  | --  | --  | --  |
| PLATED 0.5MM BLADE TERMINAL | 24         | 1600130211                      | 0.5MM BLADE - LONG               | PLATED BRASS | N/A   | N/A                | E-160013-0200   | 14  | 14  | --  | 14  | --  | --  | --  | --  | 14  | --  | --  | --  | --  | --  | --  | --  | --  | --  | --  | --  | --  |     |
|                             | 25         | 1600130212                      | 0.5MM BLADE - MEDIUM             | PLATED BRASS | N/A   | N/A                | E-160013-0200   | 14  | 14  | --  | 14  | --  | --  | --  | --  | 14  | --  | --  | --  | --  | --  | --  | --  | --  | --  | --  | --  | --  |     |
|                             | 26         | 1600130213                      | 0.5MM BLADE - SHORT              | PLATED BRASS | N/A   | N/A                | E-160013-0200   | 14  | 14  | --  | 14  | --  | --  | --  | --  | 14  | --  | --  | --  | --  | --  | --  | --  | --  | --  | --  | --  | --  |     |
|                             | 27         | 1600130214                      | 0.5MM BLADE - LONG OPTION 2      | PLATED BRASS | N/A   | N/A                | E-160013-0200   | --  | --  | 7   | --  | 14  | 14  | 7   | 7   | 7   | 7   | --  | 14  | 14  | 14  | 14  | 14  | 14  | 14  | 14  | 14  | 14  |     |
|                             | 28         | 1600130215                      | 0.5MM BLADE - MEDIUM OPTION 2    | PLATED BRASS | N/A   | N/A                | E-160013-0200   | --  | --  | --  | --  | 14  | 14  | 7   | 7   | 7   | 7   | --  | 14  | 14  | 14  | 14  | 14  | 14  | 14  | 14  | 14  | 14  |     |
|                             | 29         | 1600130216                      | 0.5MM BLADE - SHORT OPTION 2     | PLATED BRASS | N/A   | N/A                | E-160013-0200   | --  | --  | 14  | --  | 14  | 14  | 7   | 7   | 7   | 7   | --  | 14  | 14  | 14  | 14  | 14  | 14  | 14  | 14  | 14  | 14  |     |
| PACKAGING                   | 30         | N/A                             | TUBE PACK                        | N/A          | N/A   | N/A                | PK-31302-235    | 1   | 1   | 1   | --  | 1   | 1   | 1   | 1   | 1   | 1   | --  | 1   | 1   | 1   | --  | --  | --  | --  | --  | --  | --  |     |
|                             | 31         | N/A                             | TRAY PACK (STANDARD)-TRANSPARENT | N/A          | N/A   | N/A                | 1600139001      | --  | --  | --  | --  | --  | --  | --  | --  | --  | --  | 1   | 1   | --  | --  | 1   | 1   | --  | --  | --  | --  | --  |     |
|                             | 32         | N/A                             | TRAY PACK (STANDARD)-BLACK       | N/A          | N/A   | N/A                | 1600139001      | --  | --  | --  | 1   | --  | --  | --  | --  | --  | 1   | --  | --  | --  | --  | --  | --  | --  | --  | 1   | --  | --  |     |
|                             | 33         | N/A                             | TRAY PACK (BOSCH)                | N/A          | N/A   | N/A                | 1600133841-PK   | --  | --  | --  | --  | --  | --  | --  | --  | --  | --  | --  | --  | --  | --  | 1   | 1   | --  | --  | --  | --  | --  |     |



RELEASED  
RELEASED  
RELEASED  
RELEASED  
RELEASED  
RELEASED  
RELEASED  
RELEASED  
RELEASED  
RELEASED  
RELEASED  
RELEASED  
RELEASED  
RELEASED  
RELEASED  
RELEASED  
RELEASED  
OK TO TOOL  
RELEASED  
RELEASED  
RELEASED  
RELEASED  
RELEASED

STATUS

|  |   |                                       |                                      |  |   |   |
|--|---|---------------------------------------|--------------------------------------|--|---|---|
| <b>FUNCTIONAL SYMBOLS</b><br>FA = 0<br>FC = 0<br>FP = 0<br><b>DIVISIONAL SYMBOLS</b> | THIS DRAWING CONTAINS INFORMATION THAT IS PROPRIETARY TO MOLEX ELECTRONIC TECHNOLOGIES, LLC AND SHOULD NOT BE USED WITHOUT WRITTEN PERMISSION |                                       | CURRENT REV DESC: SEE REVISION SHEET |  | <br>INFOTAINMENT HDR ASSY<br>STAK50H SYSTEM |   |
|  | DIMENSION UNITS: mm<br>SCALE: 1:1   | GENERAL TOLERANCES (UNLESS SPECIFIED) |                                      |  |   | PHASE: Design Production<br>CO NO: CO-000001199<br>DRWN: Kun Du 2022-08-25<br>CHK'D: Ringo Hu 2022-08-30<br>APPR: Mike Vanslambrouck 2022-09-19 |
|  | ANGULAR TOL ± 3.0°<br>4 PLACES ±<br>3 PLACES ±<br>2 PLACES ± 0.130<br>1 PLACE ± 0.25<br>0 PLACES ±  | INITIAL REVISION:                     |                                      | DOCUMENT NUMBER: SD-160013-0001<br>DOC TYPE: PSD<br>DOC PART: 001<br>REVISION: A21 |   |   |
|  | DRAFT WHERE APPLICABLE MUST REMAIN WITHIN DIMENSIONS  | THIRD ANGLE PROJECTION<br>            | DRAWING: D-SIZE                      | SERIES: 160013   |   | MATERIAL NUMBER: GENERAL MARKET<br>CUSTOMER: GENERAL MARKET<br>SHEET NUMBER: 4 OF 4   |