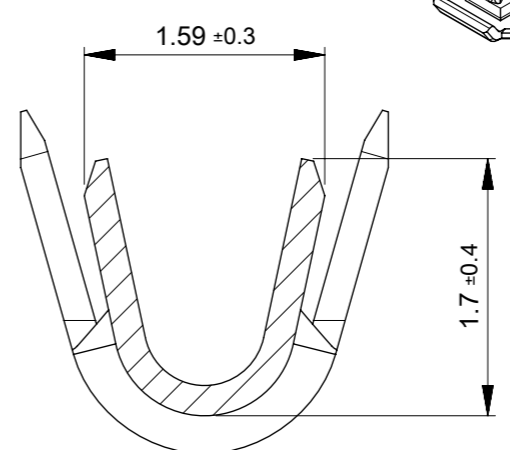
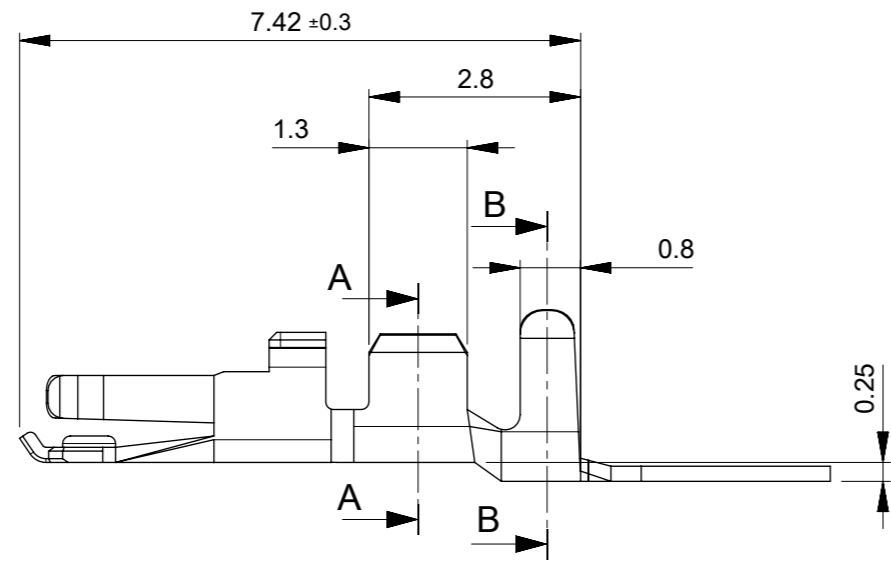
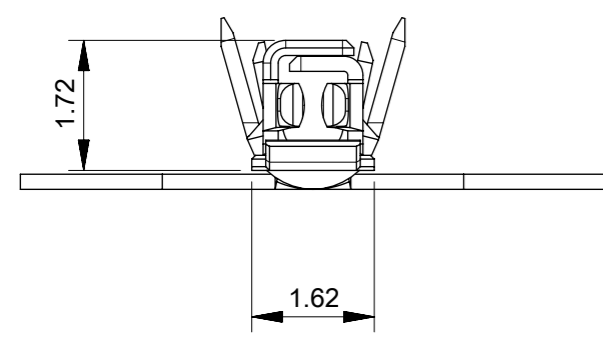
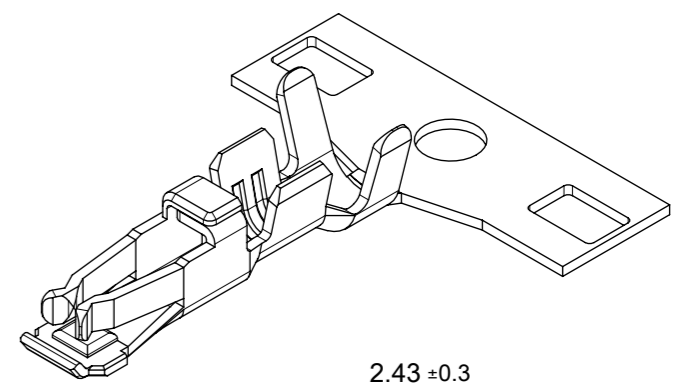
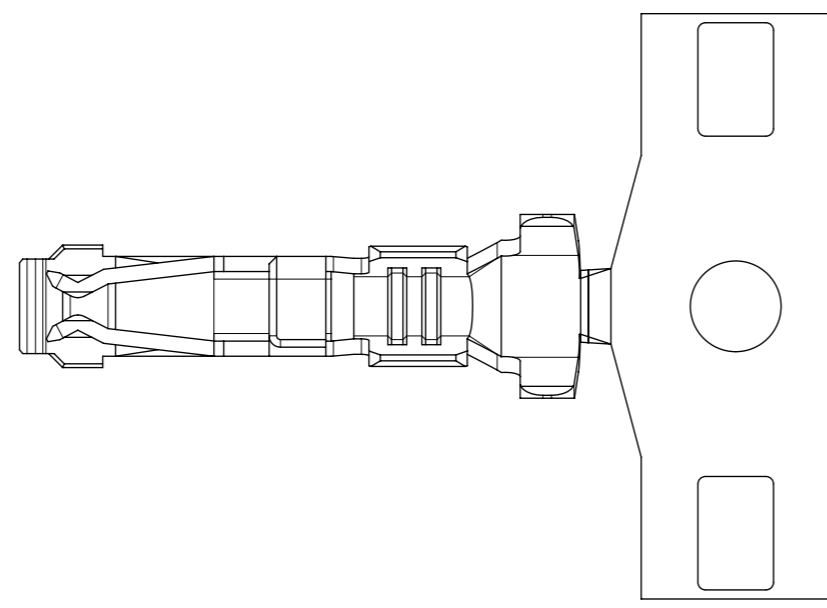
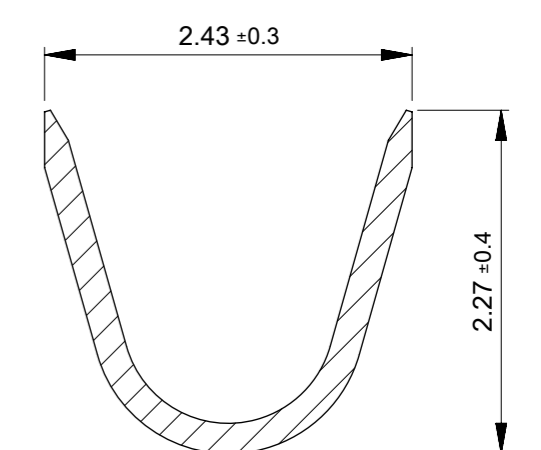


10 9 8 7 6 5 4 3 2 1

F
E
D
C
B
A



SECTION A-A
SCALE 20:1



SECTION B-B
SCALE 20:1

注記:
NOTES:

- 1 材質及び仕上げ(めっき仕様): TABLE 1参照
MATERIAL AND FINISHES (PLATING SPECIFICATION): SEE TABLE 1
- 2 製品仕様書、コネクタ取扱説明書、適合嵌合相手、適合ハウジングはSHEET 2参照
PLEASE REFER TO SHEET 2 FOR PRODUCT SPECIFICATION, APPLICATION SPECIFICATION, MATE WITH AND APPLICABLE HOUSING.
- 3 本製品は錫めっき品である。
金めっき品は5055721100-SD PSD 000をご参照下さい。
THIS IS TIN PLATING PRODUCT.
PLEASE REFER TO 5055721100-SD PSD 000 FOR GOLD PLATING.

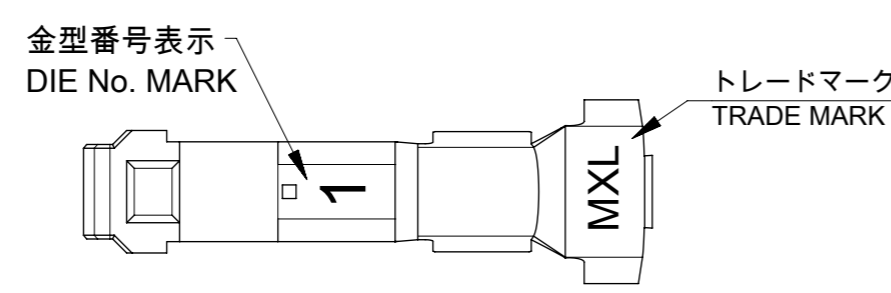


TABLE 1

部品 PART	材質 MATERIAL	
ターミナル TERMINAL	母材 BASE MATERIAL	銅合金 COPPER ALLOY
	接点部 CONTACT AREA	錫めっき:0.7 MICROMETER MINIMUM リフロー処理(前めっき) MATTE TIN : 0.7 MICROMETER MINIMUM HEAT TREATED MATTE TIN (PRE-PLATING)
DOCUMENT STATUS	P1	RELEASE DATE 2023/08/04 04:03:58

Φ0.9 ~ Φ1.5	AWG: #22-#26	リール REEL	連鎖状 CHAIN	5055721000
絶縁被覆外径範囲 INSULATION RANGE	適合電線範囲 WIRE RANGE	梱包形態 PACKAGING	端子形状 FORM	発注番号 ORDER NUMBER

THIS DRAWING CONTAINS INFORMATION THAT IS PROPRIETARY TO MOLEX ELECTRONIC TECHNOLOGIES, LLC AND SHOULD NOT BE USED WITHOUT WRITTEN PERMISSION		CURRENT REV DESC:		molex	
DIMENSION UNITS	SCALE	EC NO: 718854			
mm	NTS	DRWN: SOKUMURA01 2023/02/28		MICRO-LOCK PLUS 2.0 RECEPTACLE CRIMP TERMINAL TIN PLATING	
GENERAL TOLERANCES (UNLESS SPECIFIED)		CHK'D: SAKIYAMA 2023/08/04			
ANGULAR TOL ± 3.0°		APPR: MARAI 2023/08/04		PRODUCT CUSTOMER DRAWING	
4 PLACES ± 0.2	INITIAL REVISION:		DOCUMENT NUMBER		DOC TYPE
3 PLACES ± 0.2	DRWN: YUCHIKAWA 2016/01/20		5055721000		PSD
2 PLACES ± 0.2	APPR: TKANEKO 2016/04/18		SERIES		000
1 PLACE ± 0.2	THIRD ANGLE PROJECTION		DRAWING		F
0 PLACES ± 0.2	DRAWING		SERIES		
DRAFT WHERE APPLICABLE MUST REMAIN WITHIN DIMENSIONS		A3-SIZE		SHEET NUMBER	
		505572		1 OF 2	
		SEE CHART		GENERAL	

9 8 7 6 5 4 3 2 1

△ 2 適合製品及び各種仕様書 APPLICABLE PRODUCTS AND VARIOUS SPECIFICATIONS

梱包仕様書 PACKAGING SPECIFICATION	5055729200 PS 200
----------------------------------	-------------------

適合ハウジング シリーズ番号 APPLICABLE HOUSING SERIES NUMBER	505570
--	--------

適合嵌合相手 MATE WITH	タイプ TYPE	WIRE TO BOARD		WIRE TO WIRE
		VERTICAL	RIGHT ANGLE	
	シリーズ番号 SERIES NUMBER	505575	505578	213719
製品仕様書 PRODUCT SPECIFICATION		5055700001 PS 000		5055700003-PS PS 000
コネクタ取扱説明書 APPLICATION SPECIFICATION		5055700001 PS A03		

製品嵌合図は各適合嵌合相手図面を参照のこと。
MATING VIEW : REFER TO EACH "MATE WITH" PART DRAWING.

THIS DRAWING CONTAINS INFORMATION THAT IS PROPRIETARY TO MOLEX ELECTRONIC TECHNOLOGIES, LLC AND SHOULD NOT BE USED WITHOUT WRITTEN PERMISSION										
DIMENSION UNITS	SCALE	CURRENT REV DESC:					molex			
mm	NTS									
GENERAL TOLERANCES (UNLESS SPECIFIED)							MICRO-LOCK PLUS 2.0 RECEPTACLE CRIMP TERMINAL TIN PLATING			
ANGULAR TOL	± 3.0 °						PRODUCT CUSTOMER DRAWING			
4 PLACES	± 0.2	EC NO: 718854								
3 PLACES	± 0.2	DRWN: SOKUMURA01			2023/02/28					
2 PLACES	± 0.2	CHK'D: SAKIYAMA			2023/08/04					
1 PLACE	± 0.2	APPR: MARAI			2023/08/04					
0 PLACES	± 0.2	INITIAL REVISION:								
DRAFT WHERE APPLICABLE MUST REMAIN WITHIN DIMENSIONS		THIRD ANGLE PROJECTION	DRAWING	SERIES	MATERIAL NUMBER	CUSTOMER	DOCUMENT NUMBER	DOC TYPE	DOC PART	REVISION
			A3-SIZE	505572	2016/01/20	GENERAL	5055721000	PSD	000	F
					2016/04/18		SEE SHEET 1			2 OF 2

DOCUMENT STATUS	P1	RELEASE DATE	2023/08/04	04:03:58
-----------------	----	--------------	------------	----------