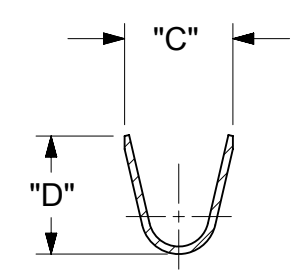
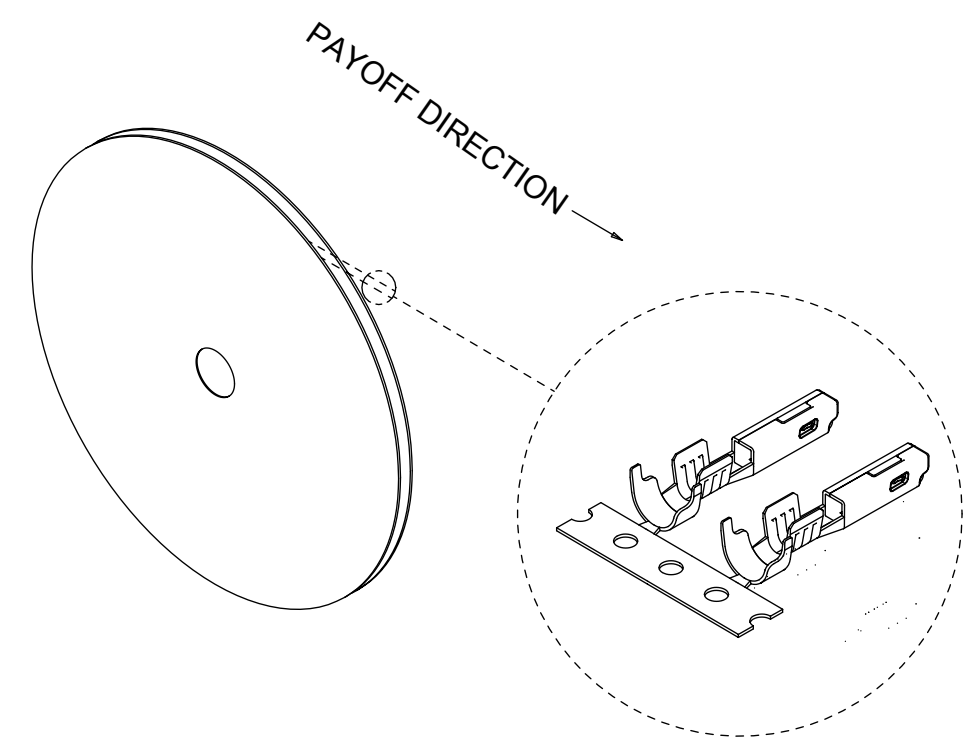
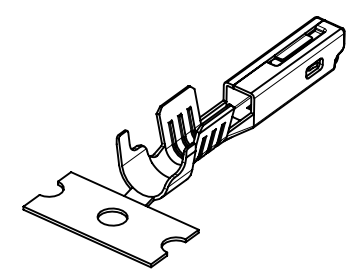
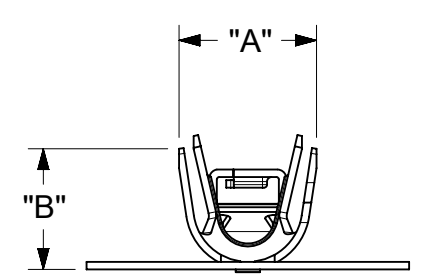


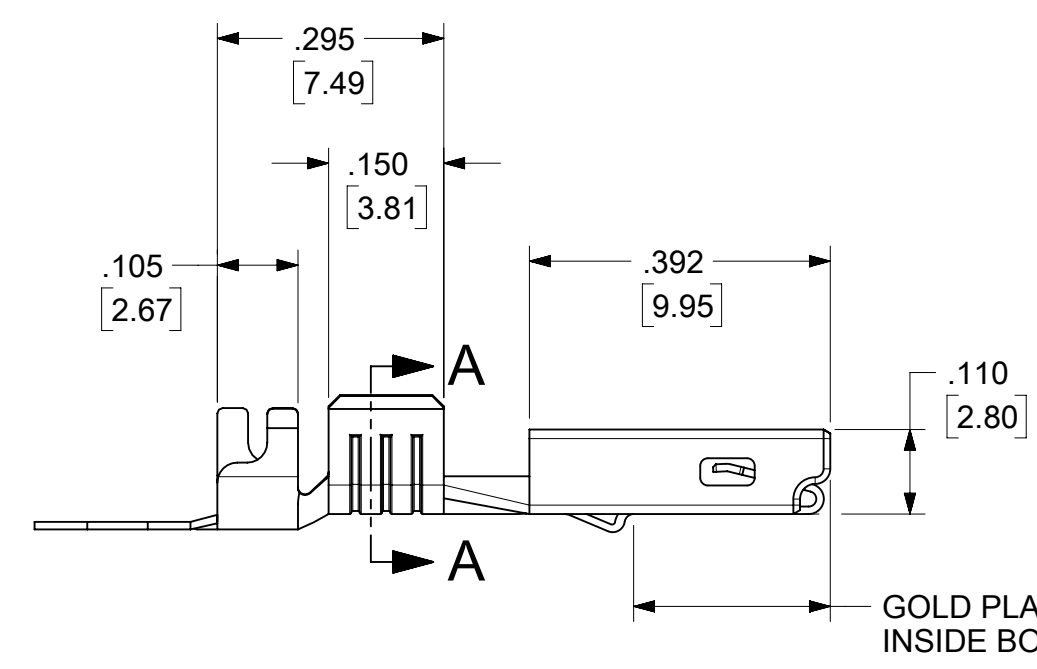
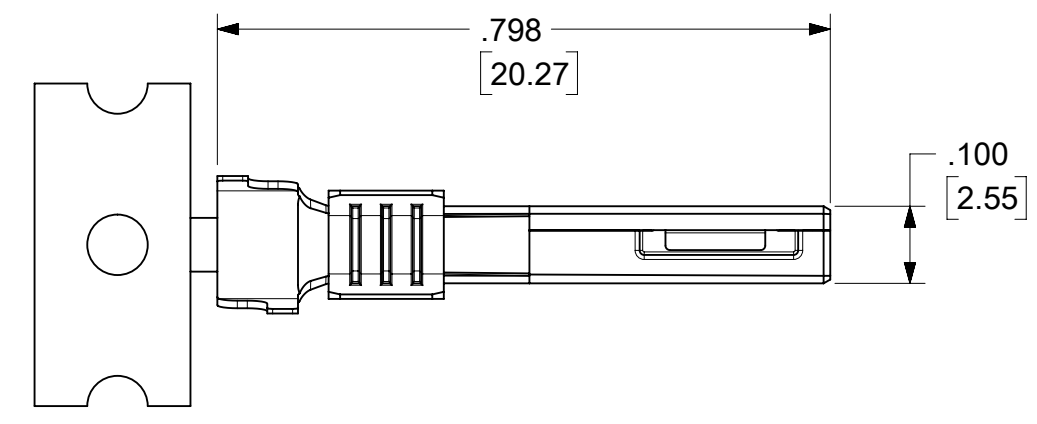
| MAT'L NO (STRIP) | MAT'L NO (LOOSE PC) | AWG SIZE | FINISH  | "A"         | "B"         | "C"         | "D"         |
|------------------|---------------------|----------|---|-------------|-------------|-------------|-------------|
| 194200001        | 194200009           | 16-14    | PREPLATED TIN 75μ MIN THICK OVER NICKEL FLASH                                       | .235 (5.97) | .182 (4.62) | .141 (3.58) | .155 (3.94) |
| 194200002        | 194200010           | 22-18    |   | .179 (4.55) | .143 (3.63) | .114 (2.90) | .106 (2.69) |
| 194200003        | 194200011           | 16-14    | SELECT HARD GOLD 30μ MIN THICK WITH SELECT TIN 100 THICK OVER NICKEL 50 MIN OVERALL | .235 (5.97) | .182 (4.62) | .141 (3.58) | .155 (3.94) |
| 194200004        | 194200012           | 22-18    |   | .179 (4.55) | .143 (3.63) | .114 (2.90) | .106 (2.69) |



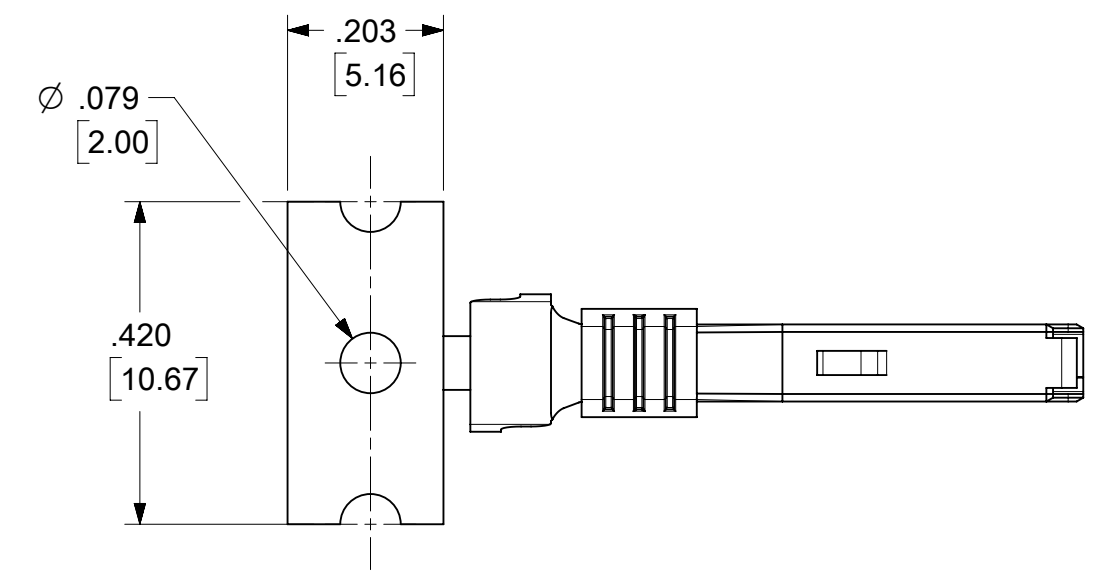
SECTION A-A



"B"



GOLD PLATING AREA INSIDE BOX



- NOTES:
1. MATERIAL: COPPER ALLOY .0098/0.249 THK.
  2. FINISH: SEE CHART.
  3. TERMINALS FOR USE WITH 19418XXXX RECEPTACLE HOUSING ASSEMBLY.
  4. STRIP TERMINALS ARE REELED AS SHOWN ABOVE ON 24" REELS, 4000 PARTS PER REEL.
  5. LOOSE TERMINALS ARE BULK PACKAGED IN QUANTITIES OF 400.
  6. APPLICATION TOOLING AND CRIMP SPECIFICATIONS: 63865-6200 (14-16 AWG), 63865-6300 (14-16 AWG), 63811-4000 (HAND TOOL).

|  |   |                           |                          |  |                        |
|--|---|---------------------------|--------------------------|--|------------------------|
| FUNCTIONAL SYMBOLS<br>FA = 0<br>FC = 0<br>FP = 0     | THIS DRAWING CONTAINS INFORMATION THAT IS PROPRIETARY TO MOLEX ELECTRONIC TECHNOLOGIES, LLC AND SHOULD NOT BE USED WITHOUT WRITTEN PERMISSION |                           |                          |  |                        |
|  | DIMENSION UNITS   |                           | SCALE                    |  |                        |
|  | INCH/MM   |                           | 4:1                      |  |                        |
|  | CURRENT REV DESC: REVISED TO LATEST MODEL   |                           |                          |  |                        |
| DIVISIONAL SYMBOLS                                   | GENERAL TOLERANCES (UNLESS SPECIFIED)   |                           |                          | EC NO: 751759<br>DRWN: DEANNM1 2024/02/28<br>CHK'D: ETHRODAHL 2024/04/18<br>APPR: ETHRODAHL 2024/04/18 |                        |
|  | 4 PLACES  | ±                         | ±                        |  |                        |
|  | 3 PLACES  | ±                         | ± 0.01                   |  |                        |
|  | 2 PLACES  | ± 0.25                    | ± 0.02                   |  |                        |
| INITIAL REVISION:                                    |   | DRWN: JPAWLICK 2003/05/12 |                          | DOCUMENT NUMBER<br><b>SD-19420-001</b>   |                        |
| APPR: RDEROSS 2003/05/13                             |   | SERIES<br><b>19420</b>    |                          |  | DOC TYPE<br><b>PSD</b> |
| DRAFT WHERE APPLICABLE MUST REMAIN WITHIN DIMENSIONS |   | THIRD ANGLE PROJECTION    | DRAWING<br><b>C-SIZE</b> | CUSTOMER<br><b>GENERAL MARKET</b>  | DOC PART<br><b>001</b> |
|  |   |                           |                          | SHEET NUMBER<br><b>1 OF 1</b>  |                        |