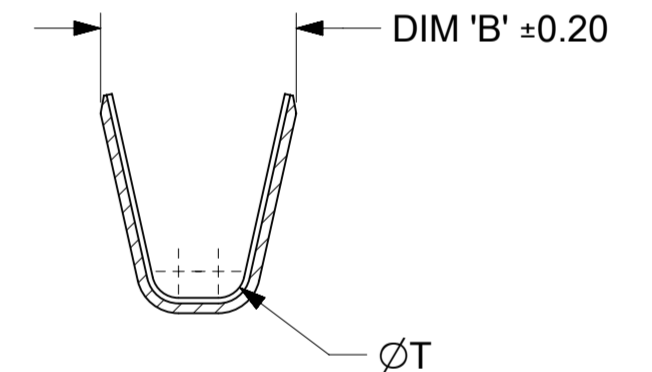
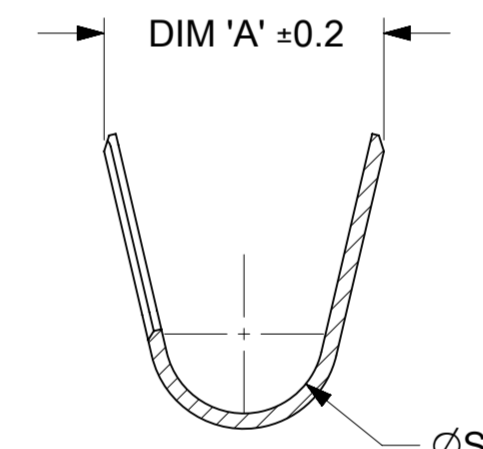
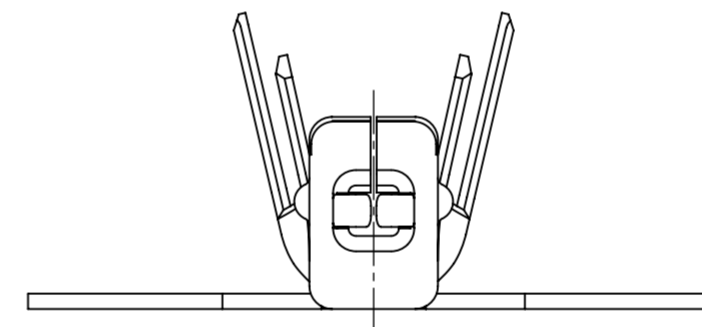
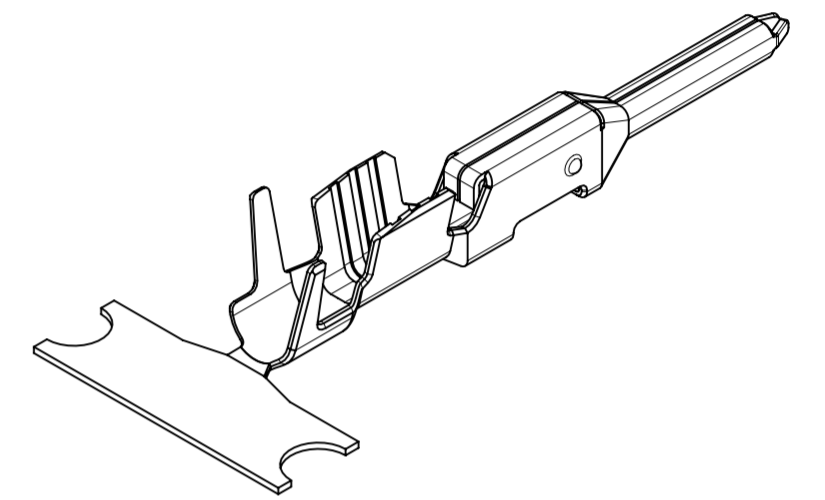


- NOTES:
1. MATERIAL: COPPER ALLOY
  2. PLATING: 100µin MIN. OVERALL MATTE TIN OVER 50µin MIN. OVERALL MATTE NICKEL
  3. PRODUCT SPECIFICATION: 2077760000-PS
  4. APPLICATION SPECIFICATION: 2077760000-AS
  5. PACKAGING: REEL PACK PER: 2077760000-PK
  6. THIS CRIMP TERMINAL TO BE USED WITH ASSEMBLY SERIES 207778
  7. THIS CRIMP TERMINAL MATES WITH RECEPTACLE CRIMP TERMINAL SERIES 207777
  8. THIS PART CONFORMS TO CLASS 'B' REQUIREMENTS OF COSMETIC SPECIFICATION PS-45499-002
  9. WIRE SPECIFICATION: SEE CHART.
  10. CRIMP TOOLING:  
 APPLICATION PART NUMBER: REFER 2077760000-AS  
 HAND TOOL PART NUMBER: REFER 2077760000-AS



SECTION Z-Z

SECTION Y-Y

TERMINAL PART NO.	WIRE AWG	INSULATION DIA	A	B	C	D	S	T	WIRE STYLE
2077760001	16AWG	1.9 - 2.4	3.7	2.6	3.0	5.5	2.1	0.7	UL1007/UL1061
2077760002	18-20AWG	1.46 - 2.1	2.7	2.0	3.0	5.5	1.6	0.6	UL1007/UL1061
2077760003	18-20AWG	2.55 - 2.70	3.7	2.0	2.2	6.3	2.5	0.7	UL1015/UL1230

THIS DRAWING CONTAINS INFORMATION THAT IS PROPRIETARY TO MOLEX ELECTRONIC TECHNOLOGIES, LLC AND SHOULD NOT BE USED WITHOUT WRITTEN PERMISSION

DIMENSION UNITS <b>mm</b>	SCALE <b>10:1</b>	CURRENT REV DESC:		<b>molex</b>
GENERAL TOLERANCES (UNLESS SPECIFIED)		EC NO: 754828		
ANGULAR TOL ± °		DRWN: VENKAS5	2023/06/27	
4 PLACES ±		CHK'D: VENKAS5	2023/06/27	
3 PLACES ±		APPR: MRAMAKRISHNA	2023/06/27	PRODUCT CUSTOMER DRAWING
2 PLACES ±		INITIAL REVISION:		
1 PLACE ± 0.2		DRWN: MUM	2019/01/31	DOCUMENT NUMBER
0 PLACES ±		APPR: NCSR	2019/07/03	<b>2077760000-SD</b>
DRAFT WHERE APPLICABLE MUST REMAIN WITHIN DIMENSIONS	THIRD ANGLE PROJECTION	DRAWING	SERIES	MATERIAL NUMBER
		<b>A2-SIZE</b>	<b>207776</b>	SEE TABLE
				CUSTOMER
				GENERAL MARKET
				SHEET NUMBER
				<b>1 OF 1</b>