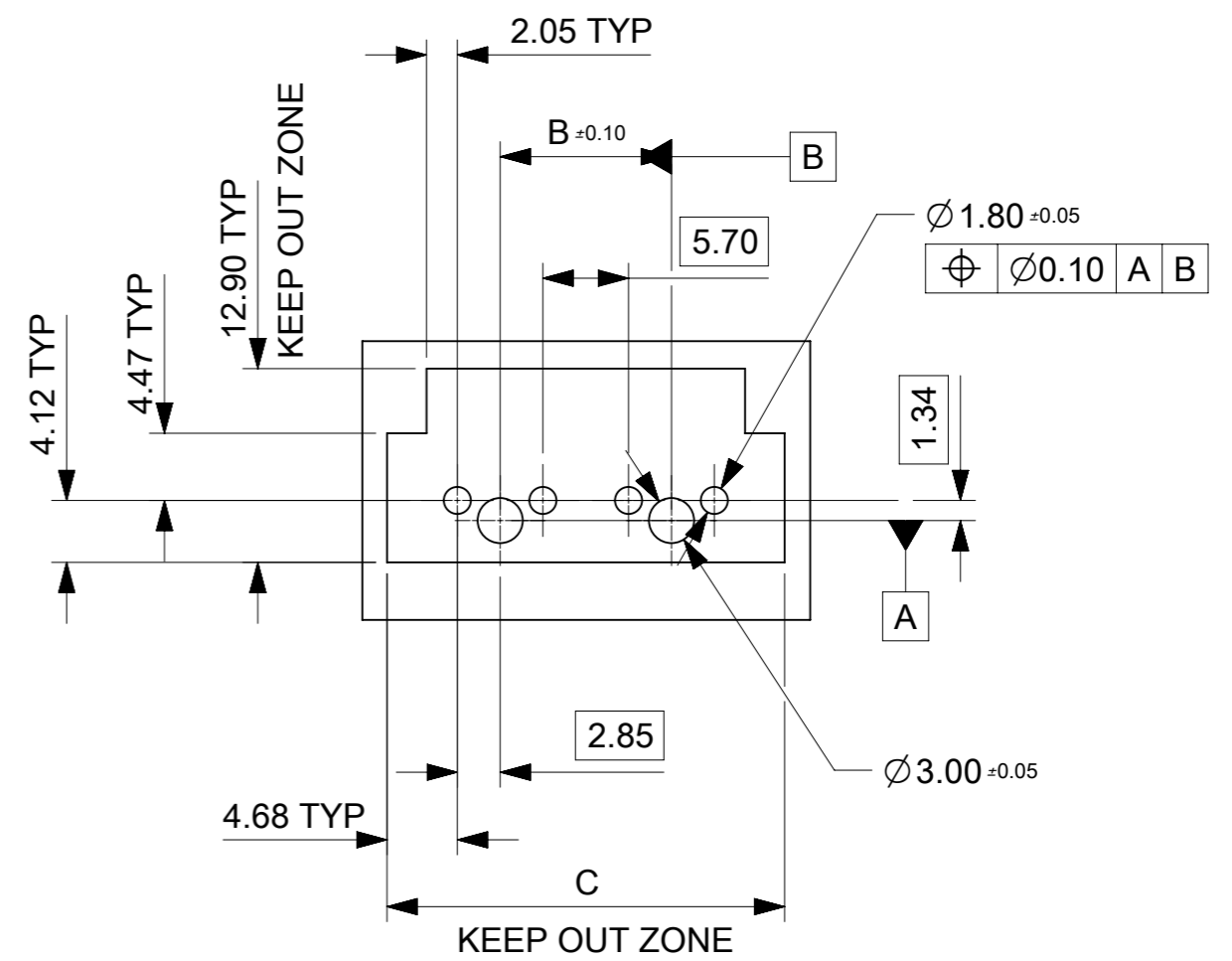
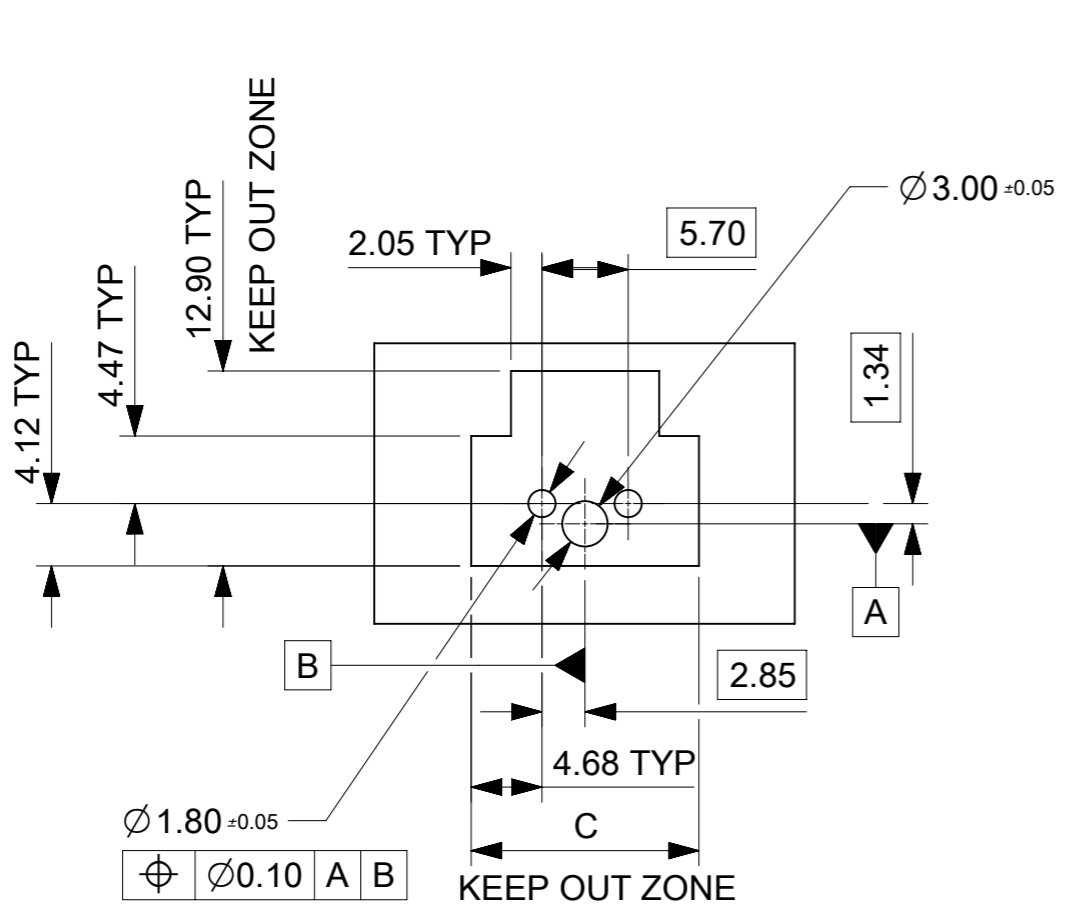


NOTES:

- MATERIAL:
HOUSING LCP, UL94V-0 AND GLOW WIRE CAPABLE PER IEC 60335-1, COLOR: SEE CHART.
TERMINAL COPPER.
- FINISH (PLATING):
(TIN) 1.52 MICROMETER MIN (60 MICROINCH MIN) REFLOWED MATTE TIN OVER
1.27 MICROMETER MIN (50 MICROINCH MIN) MIN NICKEL OVERALL.
(15 GOLD) 0.38 MICROMETER MIN (15 MICROINCH MIN) SELECTIVE GOLD ON CONTACT AREA
WITH 2.54 MICROMETER MIN (100 MICROINCHES MIN) SELECTIVE TIN ON SOLDER AREA
BOTH OVER 1.27 MICROMETER MIN (50 MICROINCHES MIN) NICKEL OVERALL.
(30 GOLD) 0.76 MICROMETER MIN (30 MICROINCH MIN) SELECTIVE GOLD ON CONTACT AREA
WITH 2.54 MICROMETER MIN (100 MICROINCHES MIN) SELECTIVE TIN ON SOLDER AREA
BOTH OVER 1.27 MICROMETER MIN (50 MICROINCHES MIN) NICKEL OVERALL.
- PRODUCT SPECIFICATION: 1720631000-PS.
- PART MATES WITH MOLEX PART NUMBER 200456 SERIES.
- PARTS CONFORM TO CLASS "B" REQUIREMENTS OF COSMETIC SPECIFICATION PS-45499-002.
- PACKAGING SPECIFICATION: TRAY PER 2002411000; T&R WITHOUT KAPTON PER 2002411700;
T&R WITH KAPTON PER 2002411600.
- APPLICATION SPECIFICATION: 768232000-AS.

THIS DRAWING CONTAINS INFORMATION THAT IS PROPRIETARY TO MOLEX ELECTRONIC TECHNOLOGIES, LLC AND SHOULD NOT BE USED WITHOUT WRITTEN PERMISSION															
DIMENSION UNITS		SCALE		CURRENT REV DESC:				molex							
mm		NTS													
GENERAL TOLERANCES (UNLESS SPECIFIED)				EC NO: 789500 DRWN: JERRYW8 2023/11/28 CHK'D: XQZHANG 2024/06/18 APPR: XQZHANG 2024/06/18 INITIAL REVISION: DRWN: YXZHENG 2018/07/18 APPR: YXZHENG 2018/08/06						MEGA-FIT HDR ASMY TOP LATCH, VERT, 2-8CKT					
ANGULAR TOL ± 3.0°										PRODUCT CUSTOMER DRAWING					
4 PLACES ±										DOCUMENT NUMBER		DOC TYPE		DOC PART	
3 PLACES ±										2002411000		PSD		000	
2 PLACES ±		0.4								REVISION		C3			
1 PLACE ±		0.5													
0 PLACES ±															
DRAFT WHERE APPLICABLE MUST REMAIN WITHIN DIMENSIONS			THIRD ANGLE PROJECTION		DRAWING		SERIES		MATERIAL NUMBER						
			A3-SIZE		200241		SEE TABLE		GENERAL MARKET						
									SHEET NUMBER						
									1 OF 4						



PCB LAYOUT: COMPONENT SIDE
RECOMMENDED PCB THICKNESS: 1.58 MM/.062 IN
TO 2.36 MM/.093 IN

THIS DRAWING CONTAINS INFORMATION THAT IS PROPRIETARY TO MOLEX ELECTRONIC TECHNOLOGIES, LLC AND SHOULD NOT BE USED WITHOUT WRITTEN PERMISSION									
DIMENSION UNITS		SCALE		CURRENT REV DESC:				molex	
mm		NTS							
GENERAL TOLERANCES (UNLESS SPECIFIED)				EC NO: 789500				MEGA-FIT HDR ASMY TOP LATCH, VERT, 2-8CKT	
ANGULAR TOL ± 3.0°				DRWN: JERRYW8 2023/11/28				PRODUCT CUSTOMER DRAWING	
4 PLACES ±				CHK'D: XQZHANG 2024/06/18				DOCUMENT NUMBER	
3 PLACES ±				APPR: XQZHANG 2024/06/18				2002411000	
2 PLACES ± 0.4				INITIAL REVISION:				DOC TYPE	
1 PLACE ± 0.5				DRWN: YXZHENG 2018/07/18				PSD	
0 PLACES ±				APPR: YXZHENG 2018/08/06				DOC PART	
DRAFT WHERE APPLICABLE MUST REMAIN WITHIN DIMENSIONS				THIRD ANGLE PROJECTION		DRAWING		REVISION	
				A3-SIZE		SERIES		C3	
				200241		MATERIAL NUMBER		SHEET NUMBER	
				SEE TABLE		CUSTOMER		2 OF 4	
				GENERAL MARKET					


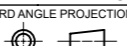
	10	9	8	7	6	5	4	3	2	1																																							
F	CKT	POLARIZATION-BLACK	POLARIZATION-NATURAL	POLARIZATION-RED	POLARIZATION-BLUE	POLARIZATION-BLUE	POLARIZATION-BLUE	POLARIZATION-BLUE	POLARIZATION-YELLOW																																								
	2CKT																																																
E	3CKT																																																
	4CKT																																																
D	5CKT																																																
	6CKT																																																
C	7CKT																																																
B	8CKT																																																
A	<table border="1"> <tr> <td>DOCUMENT STATUS</td> <td>P1</td> <td>RELEASE DATE</td> <td>2024/06/18</td> <td>06:39:51</td> </tr> </table>		DOCUMENT STATUS	P1	RELEASE DATE	2024/06/18	06:39:51	<table border="1"> <tr> <td>THIS DRAWING CONTAINS INFORMATION THAT IS PROPRIETARY TO MOLEX ELECTRONIC TECHNOLOGIES, LLC AND SHOULD NOT BE USED WITHOUT WRITTEN PERMISSION</td> <td colspan="2">CURRENT REV DESC:</td> <td colspan="2" rowspan="2"> </td> </tr> <tr> <td>DIMENSION UNITS</td> <td>SCALE</td> <td colspan="2"> EC NO: 789500 DRWN: JERRYW8 CHK'D: XQZHANG APPR: XQZHANG INITIAL REVISION: DRWN: YXZHENG APPR: YXZHENG </td> </tr> <tr> <td>mm</td> <td>NTS</td> <td colspan="2"> 2023/11/28 2024/06/18 2024/06/18 </td> <td> DOC TYPE PSD </td> </tr> <tr> <td colspan="2">GENERAL TOLERANCES (UNLESS SPECIFIED)</td> <td colspan="2"> 4 PLACES ± 3 PLACES ± 2 PLACES ± 0.4 1 PLACE ± 0.5 0 PLACES ± </td> <td> DOC PART 000 </td> </tr> <tr> <td colspan="2">ANGULAR TOL ± 3.0°</td> <td colspan="2"> 2018/07/18 2018/08/06 </td> <td> REVISION C3 </td> </tr> <tr> <td colspan="2">DRAFT WHERE APPLICABLE MUST REMAIN WITHIN DIMENSIONS</td> <td> THIRD ANGLE PROJECTION </td> <td> DRAWING A3-SIZE </td> <td> MATERIAL NUMBER SEE TABLE </td> </tr> <tr> <td colspan="2"></td> <td> SERIES 200241 </td> <td> CUSTOMER GENERAL MARKET </td> <td> SHEET NUMBER 3 OF 4 </td> </tr> </table>			THIS DRAWING CONTAINS INFORMATION THAT IS PROPRIETARY TO MOLEX ELECTRONIC TECHNOLOGIES, LLC AND SHOULD NOT BE USED WITHOUT WRITTEN PERMISSION	CURRENT REV DESC:				DIMENSION UNITS	SCALE	EC NO: 789500 DRWN: JERRYW8 CHK'D: XQZHANG APPR: XQZHANG INITIAL REVISION: DRWN: YXZHENG APPR: YXZHENG		mm	NTS	2023/11/28 2024/06/18 2024/06/18		DOC TYPE PSD	GENERAL TOLERANCES (UNLESS SPECIFIED)		4 PLACES ± 3 PLACES ± 2 PLACES ± 0.4 1 PLACE ± 0.5 0 PLACES ±		DOC PART 000	ANGULAR TOL ± 3.0°		2018/07/18 2018/08/06		REVISION C3	DRAFT WHERE APPLICABLE MUST REMAIN WITHIN DIMENSIONS		THIRD ANGLE PROJECTION 	DRAWING A3-SIZE	MATERIAL NUMBER SEE TABLE			SERIES 200241	CUSTOMER GENERAL MARKET	SHEET NUMBER 3 OF 4					
DOCUMENT STATUS	P1	RELEASE DATE	2024/06/18	06:39:51																																													
THIS DRAWING CONTAINS INFORMATION THAT IS PROPRIETARY TO MOLEX ELECTRONIC TECHNOLOGIES, LLC AND SHOULD NOT BE USED WITHOUT WRITTEN PERMISSION	CURRENT REV DESC:																																																
DIMENSION UNITS	SCALE	EC NO: 789500 DRWN: JERRYW8 CHK'D: XQZHANG APPR: XQZHANG INITIAL REVISION: DRWN: YXZHENG APPR: YXZHENG																																															
mm	NTS	2023/11/28 2024/06/18 2024/06/18		DOC TYPE PSD																																													
GENERAL TOLERANCES (UNLESS SPECIFIED)		4 PLACES ± 3 PLACES ± 2 PLACES ± 0.4 1 PLACE ± 0.5 0 PLACES ±		DOC PART 000																																													
ANGULAR TOL ± 3.0°		2018/07/18 2018/08/06		REVISION C3																																													
DRAFT WHERE APPLICABLE MUST REMAIN WITHIN DIMENSIONS		THIRD ANGLE PROJECTION 	DRAWING A3-SIZE	MATERIAL NUMBER SEE TABLE																																													
		SERIES 200241	CUSTOMER GENERAL MARKET	SHEET NUMBER 3 OF 4																																													

10		9			8				
CKT	PLATING CODE	CORLOR	PART NUMBER	DIM-A	DIM-B	DIM-C	PK SPEC		
2	TIN	BLACK	2002411112	12.05	N/A	15.06	TRAY (2002411000)		
3			2002411113	17.75	5.7	20.76			
4			2002411114	23.45	11.4	26.46			
5			2002411115	29.15	17.1	32.16			
6			2002411116	34.85	22.8	37.86			
7			2002411117	40.55	28.5	43.56			
8			2002411118	46.25	34.2	49.26			
2			15"GOLD	BLACK	2002411122	12.05		N/A	15.06
3	2002411123	17.75			5.7	20.76			
4	2002411124	23.45			11.4	26.46			
5	2002411125	29.15			17.1	32.16			
6	2002411126	34.85			22.8	37.86			
7	2002411127	40.55			28.5	43.56			
8	2002411128	46.25			34.2	49.26			
2	30"GOLD	BLACK			2002411132	12.05	N/A	15.06	
3			2002411133	17.75	5.7	20.76			
4			2002411134	23.45	11.4	26.46			
5			2002411135	29.15	17.1	32.16			
6			2002411136	34.85	22.8	37.86			
7			2002411137	40.55	28.5	43.56			
8			2002411138	46.25	34.2	49.26			

7		6			5				
CKT	PLATING CODE	CORLOR	PART NUMBER	DIM-A	DIM-B	DIM-C	PK SPEC		
2	TIN	BLACK	2002411712	12.05	N/A	15.06	TAPE&REEL WITHOUT KAPTON (2002411700)		
3			2002411713	17.75	5.7	20.76			
4			2002411714	23.45	11.4	26.46			
5			2002411715	29.15	17.1	32.16			
6			2002411716	34.85	22.8	37.86			
7			2002411717	40.55	28.5	43.56			
8			2002411718	46.25	34.2	49.26			
2			15"GOLD	BLACK	2002411722	12.05		N/A	15.06
3	2002411723	17.75			5.7	20.76			
4	2002411724	23.45			11.4	26.46			
5	2002411725	29.15			17.1	32.16			
6	2002411726	34.85			22.8	37.86			
7	2002411727	40.55			28.5	43.56			
8	2002411728	46.25			34.2	49.26			
2	30"GOLD	BLACK			2002411732	12.05	N/A	15.06	
3			2002411733	17.75	5.7	20.76			
4			2002411734	23.45	11.4	26.46			
5			2002411735	29.15	17.1	32.16			
6			2002411736	34.85	22.8	37.86			
7			2002411737	40.55	28.5	43.56			
8			2002411738	46.25	34.2	49.26			

4		3			2			1	
CKT	PLATING CODE	CORLOR	PART NUMBER	DIM-A	DIM-B	DIM-C	PK SPEC		
2	TIN	BLACK	2002411612	12.05	N/A	15.06	TAPE&REEL WITH KAPTON (2002411600)		
3			2002411613	17.75	5.7	20.76			
4			2002411614	23.45	11.4	26.46			
5			2002411615	29.15	17.1	32.16			
6			2002411616	34.85	22.8	37.86			
7			2002411617	40.55	28.5	43.56			
8			2002411618	46.25	34.2	49.26			
2			15"GOLD	BLACK	2002411622	12.05		N/A	15.06
3	2002411623	17.75			5.7	20.76			
4	2002411624	23.45			11.4	26.46			
5	2002411625	29.15			17.1	32.16			
6	2002411626	34.85			22.8	37.86			
7	2002411627	40.55			28.5	43.56			
8	2002411628	46.25			34.2	49.26			
2	30"GOLD	BLACK			2002411632	12.05	N/A	15.06	
3			2002411633	17.75	5.7	20.76			
4			2002411634	23.45	11.4	26.46			
5			2002411635	29.15	17.1	32.16			
6			2002411636	34.85	22.8	37.86			
7			2002411637	40.55	28.5	43.56			
8			2002411638	46.25	34.2	49.26			

D		C			B			A			
CKT	PLATING CODE	CORLOR	PART NUMBER	DIM-A	DIM-B	DIM-C	PK SPEC				
2	TIN	NATURAL	2002412112	12.05	N/A	15.06	TRAY (2002411000)				
3			2002412113	17.75	5.7	20.76					
4			2002412114	23.45	11.4	26.46					
5			2002412115	29.15	17.1	32.16					
6			2002412116	34.85	22.8	37.86					
7			2002412117	40.55	28.5	43.56					
8		2002412118	46.25	34.2	49.26						
2		RED	2002413112	12.05	N/A	15.06					
3			2002413113	17.75	5.7	20.76					
4			2002413114	23.45	11.4	26.46					
5			2002413115	29.15	17.1	32.16					
6			2002413116	34.85	22.8	37.86					
7			2002413117	40.55	28.5	43.56					
8		2002413118	46.25	34.2	49.26						
2		BLUE	2002415112	12.05	N/A	15.06					
3			2002415113	17.75	5.7	20.76					
4			2002415114	23.45	11.4	26.46					
5			2002415115	29.15	17.1	32.16					
6	2002415116		34.85	22.8	37.86						
7	2002415117		40.55	28.5	43.56						
8	2002415118	46.25	34.2	49.26							
2	YELLOW	2002416112	12.05	N/A	15.06						
3		2002416113	17.75	5.7	20.76						
4		2002416114	23.45	11.4	26.46						
5		2002416115	29.15	17.1	32.16						
6		2002416116	34.85	22.8	37.86						
7		2002416117	40.55	28.5	43.56						
8	2002416118	46.25	34.2	49.26							

THIS DRAWING CONTAINS INFORMATION THAT IS PROPRIETARY TO MOLEX ELECTRONIC TECHNOLOGIES, LLC AND SHOULD NOT BE USED WITHOUT WRITTEN PERMISSION													
DIMENSION UNITS		SCALE		CURRENT REV DESC:									
mm		NTS		 MEGA-FIT HDR ASMY TOP LATCH,VERT,2-8CKT PRODUCT CUSTOMER DRAWING									
GENERAL TOLERANCES (UNLESS SPECIFIED)										EC NO: 789500		2023/11/28	
ANGULAR TOL		± 3.0 °								DRWN: JERRYW8		2024/06/18	
4 PLACES		±								CHK'D: XQZHANG		2024/06/18	
3 PLACES		±								APPR: XQZHANG		2024/06/18	
2 PLACES		± 0.4		INITIAL REVISION:				DOCUMENT NUMBER					
1 PLACE		± 0.5		DRWN: YXZHENG				2018/07/18					
0 PLACES		±		APPR: YXZHENG				2018/08/06					
DRAFT WHERE APPLICABLE MUST REMAIN WITHIN DIMENSIONS				THIRD ANGLE PROJECTION		DRAWING		SERIES					
						A3-SIZE		200241					
				MATERIAL NUMBER		CUSTOMER		SHEET NUMBER					
				SEE TABLE		GENERAL MARKET		4 OF 4					