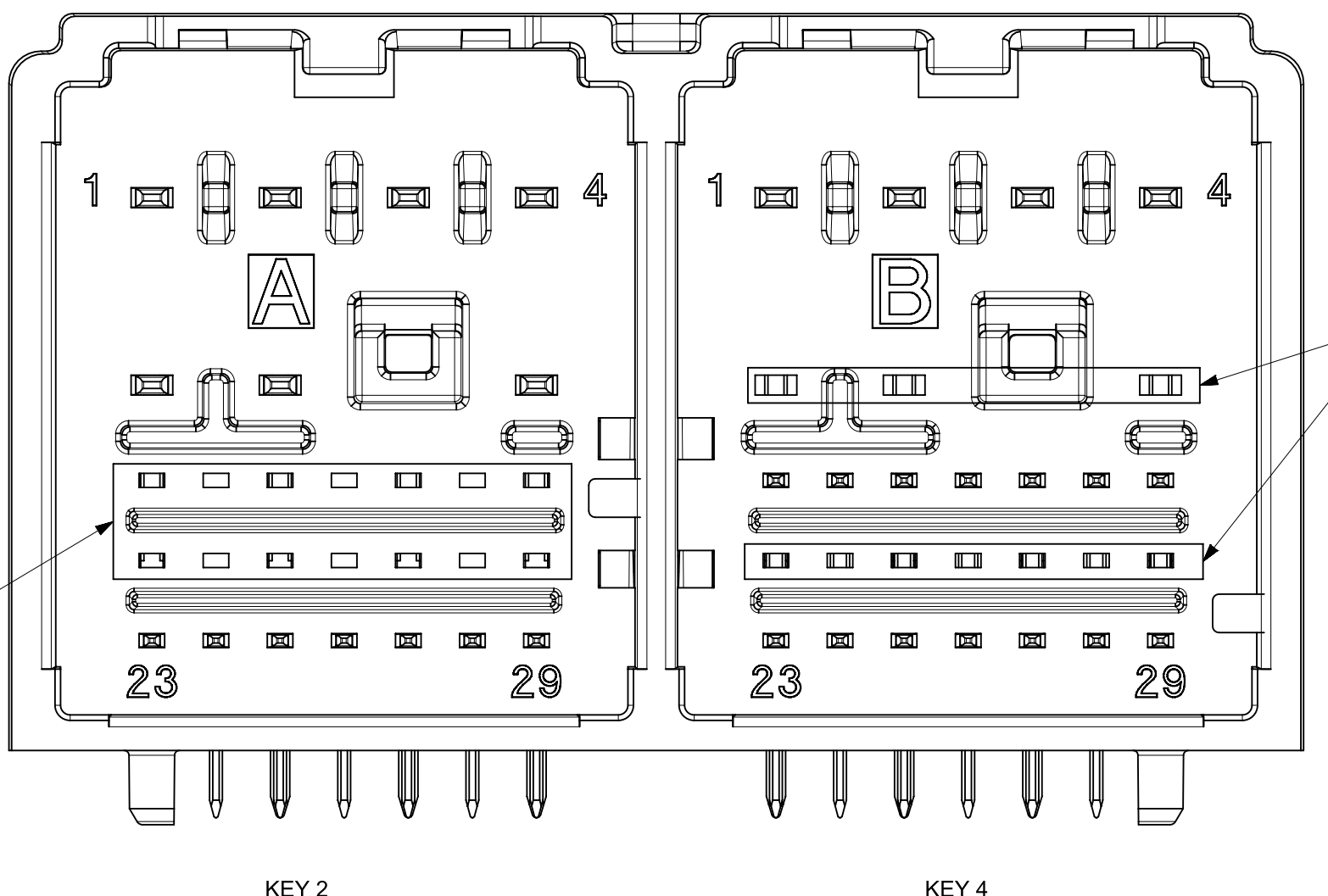
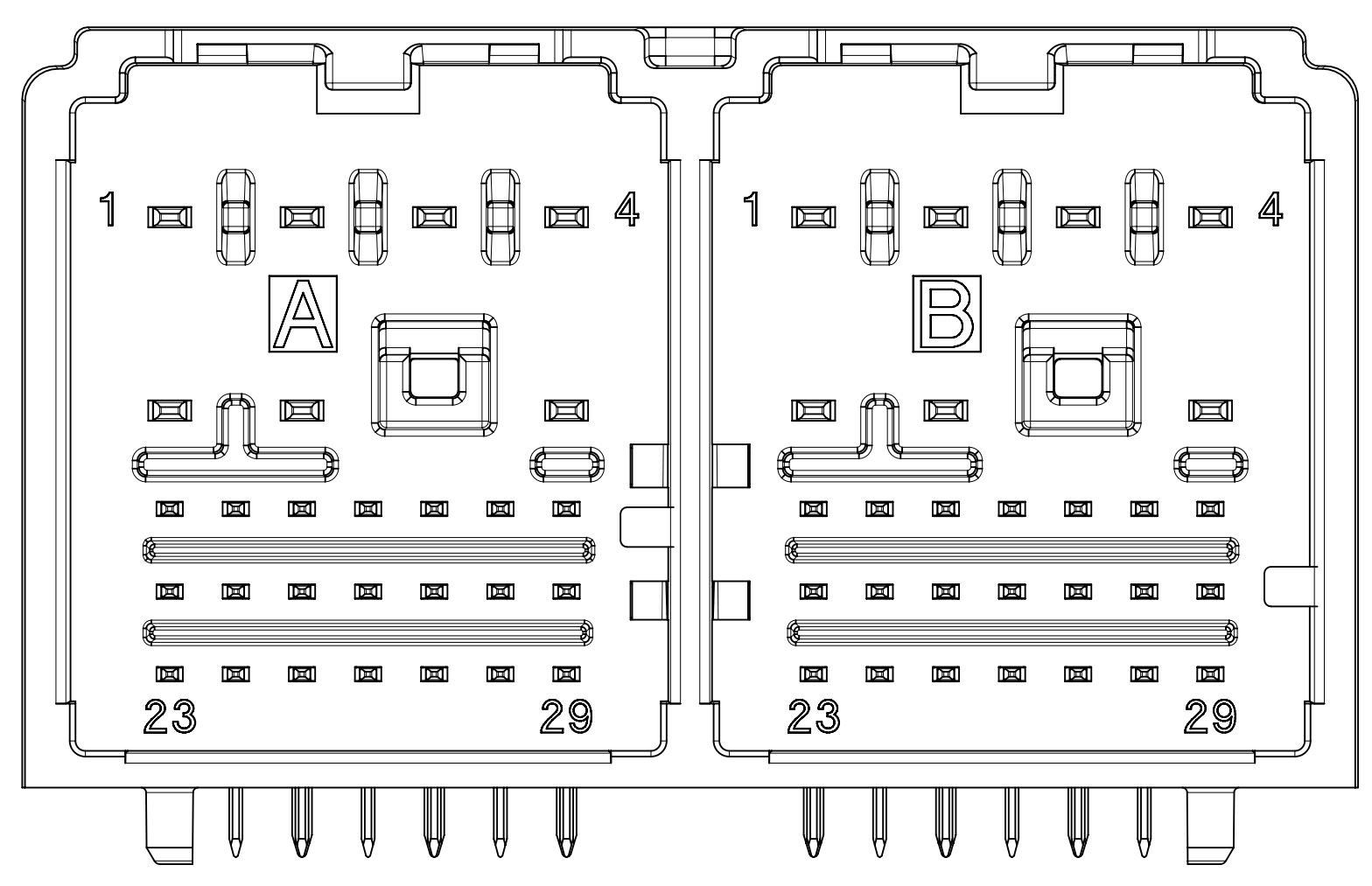


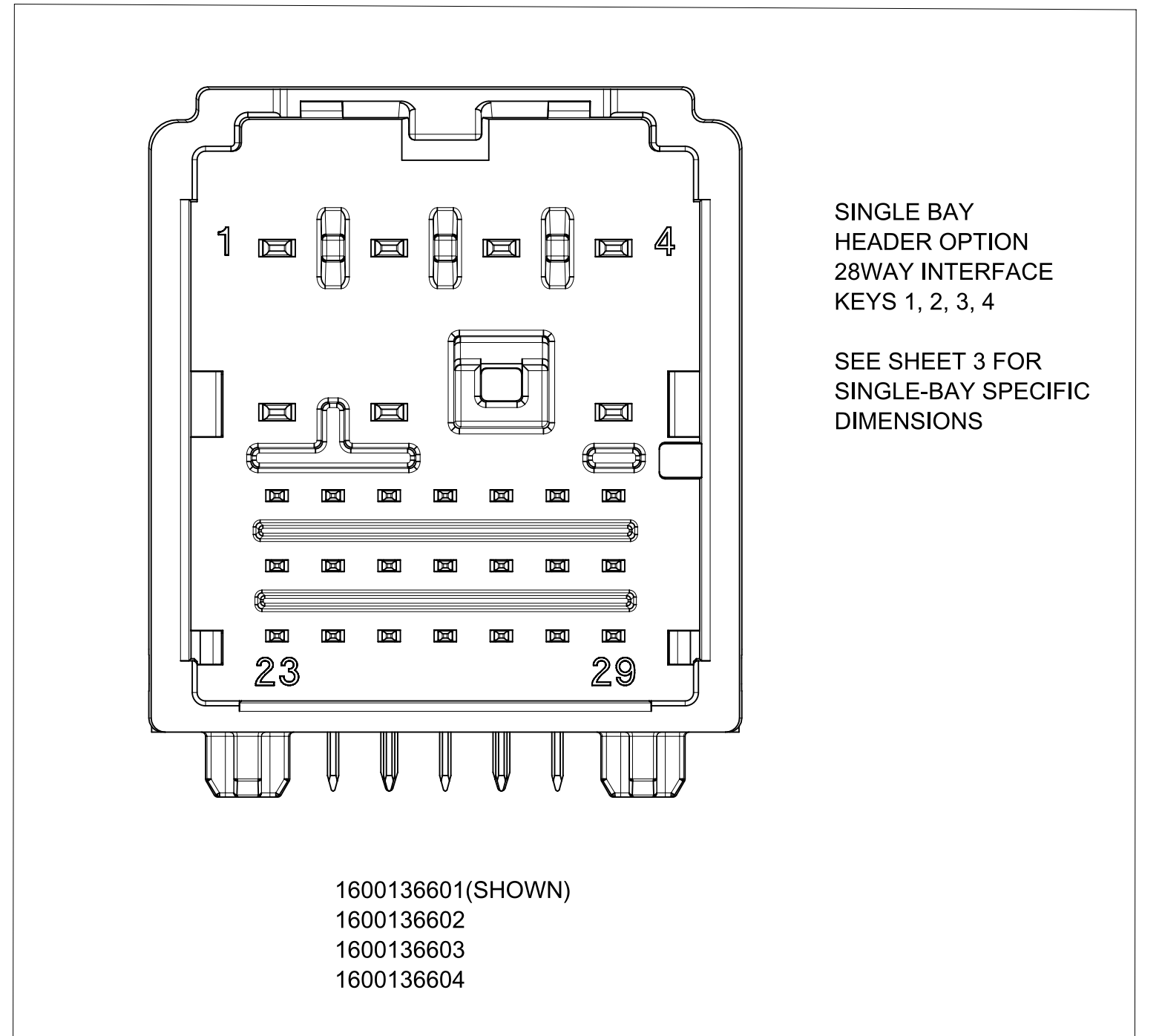
160013X641
1600133741
1600133841
1600134141
1600134641
1600133941



1600131624 (DEPOPULATED AS SHOWN)
1600133624 (USES FULL POPULATION)
1600133724 (USES FULL POPULATION)
1600133824 (USES FULL POPULATION)

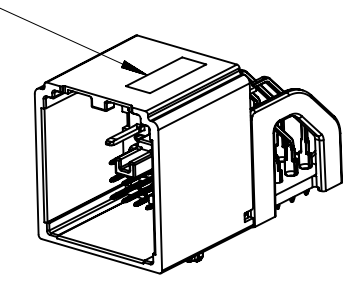


160013X623



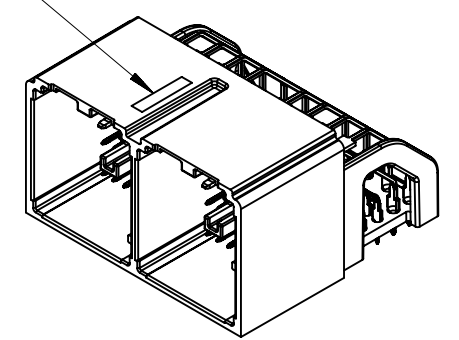
1600136601 (SHOWN)
1600136602
1600136603
1600136604

SEE NOTE 4.B.



Gen1
SCALE 1:1

SEE NOTE 4.B.



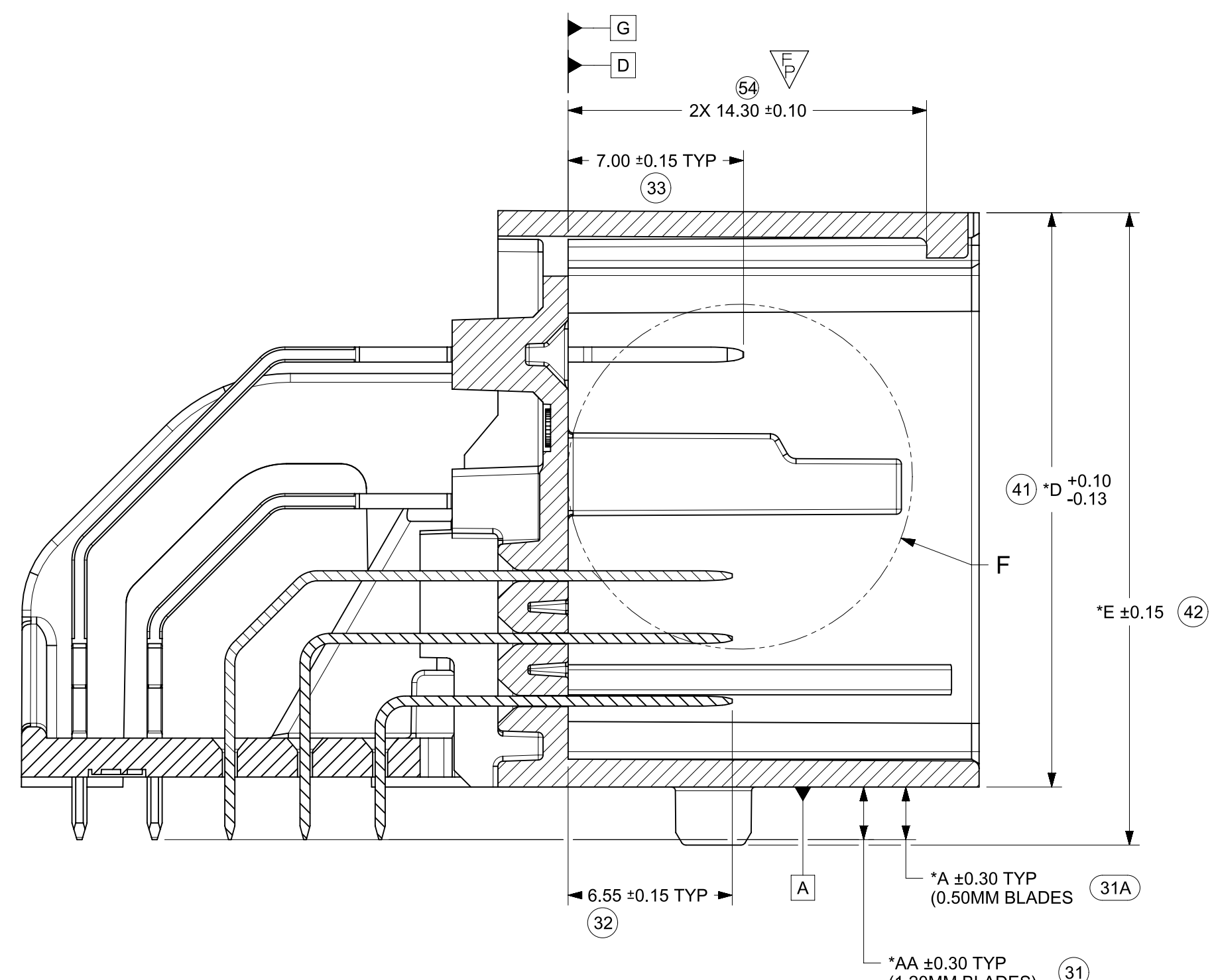
Iso1
SCALE 1:1

NOTES: VALID UNLESS OTHERWISE SPECIFIED

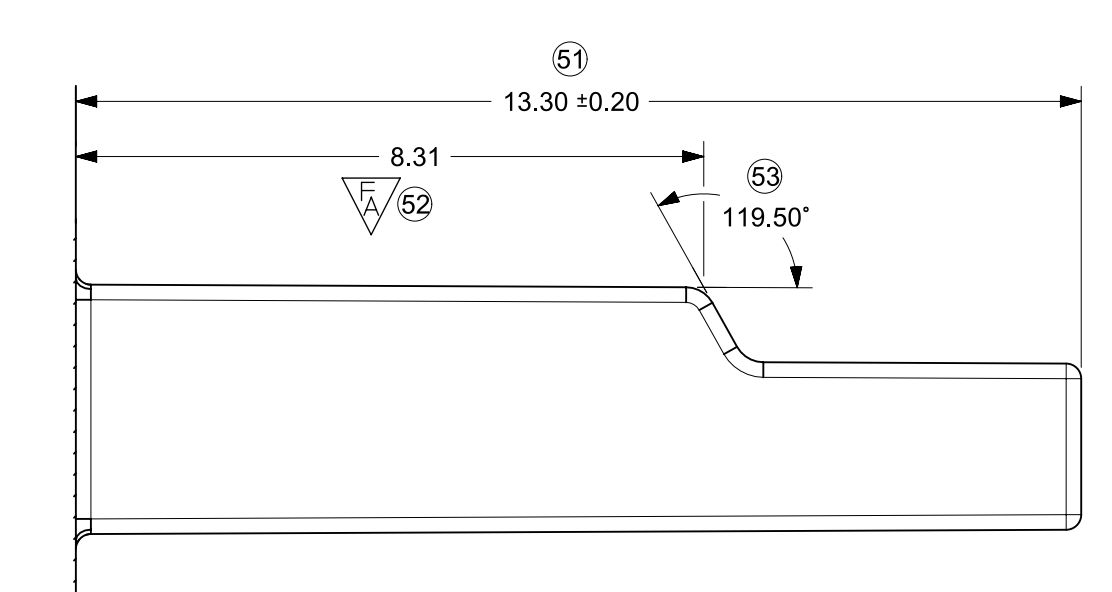
1. GENERAL:
 - a. APPLICATION SPECIFICATION SEE: AS-160013-001
 - b. PRODUCT SPECIFICATION SEE: PS-160013-001
 - c. PACKAGING SPECIFICATION PER BOM TABLE SHEET 4
2. DESIGN - MATERIALS:
 - a. SEE BOM TABLE
 - b. BLADE TERMINALS:
 1. 0.5mm Blades
Base Material: Copper Alloy
Conductivity ≥28% IACS @ 20°C
UNDERPLATING (OVERALL):
0.5 - 2.0 μm ELECTRO-DEPOSITED DUCTILE NICKEL SULFAMATE
OVERPLATING (OVERALL):
0.76 - 1.5 μm ELECTRO-DEPOSITED TIN (REFLOWED)
 2. 1.2mm Blades
Base Material: Copper Alloy
Conductivity ≥28% IACS @ 20°C
UNDERPLATING (OVERALL):
1.25 - 2.25 μm ELECTRO-DEPOSITED DUCTILE NICKEL SULFAMATE
TOP PLATING:
ZONE A (CONNECTOR END):
0.76 - 1.5 μm ELECTRO-DEPOSITED TIN REFLOWED
ZONE B (PCB END):
2.5 - 4.0 μm ELECTRO-DEPOSITED MATTE TIN (NO BRIGHTENERS)
3. DESIGN - GEOMETRY:
 - a. ALL GRAPHIC DATA IS BASIC (NO TOLERANCE) AND MUST BE TAKEN FROM THE DATA FILE AT ITS LATEST REVISION.
 - b. PRODUCT DESIGN MODEL NUMBER(S): SEE BOM TABLE
 - c. GEOMETRIC DIMENSIONS AND TOLERANCES PER ASME Y14.5-2009
 - d. EDGES AND UNDIMENSIONED DETAILS PER ISO13715
 - e. CORNERS SHOWN AS SHARP TO BE R 0.2 MAX.
 - f. LETTERING SHALL BE MAX POSSIBLE FOR READABILITY.
THIS INCLUDES RECYCLING CODE, CAVITY ID, VENDOR IDENTIFICATION
 - g. FOR BAY/POCKET DEFINITION SEE MOLEX INTERFACE DRAWING SD-160014-002, FOR ANY CONFLICTING DIMENSIONS OR TOLERANCES, SD-160013-0001 IS THE OVERRIDING DOCUMENT.
 - h. MATING HARNESS CONNECTORS MOLEX PN: 1600140001 (Key 1)
1600140002 (Key 2)
1600140003 (Key 3)
1600140004 (Key 4)
4. DESIGN - MANUFACTURING:
 - a. VISUAL DEFECTS SHALL MEET COSMETIC STANDARD PS-45499-002 (Class B)
 - b. HUMAN READABLE LASER MARKING
 1. INFORMATION
DDDDYY: JULIAN DATE CODE
XXXXX: 5 DIGIT SERIAL NO.
 2. SIZE
HUMAN LEGIBLE
 - c. PIN MATE SIDE AND PCB SIDE TRUE POSITION TO BE VERIFIED ON-LINE WITH A GO/NO-GO FUNCTIONAL GAGE
 - d. REFLOW SOLDERABILITY PER SMES-152

A21	CHANGE 1600133941 PACKAGE TO TRAY PACK(STANDRD)-BLACK ECN#: CO-000001199 Kun Du 8/25/2022
A20	ADDED NEW PART NO.:1600133941 CHANGE 1600133741 PACKAGE TO TRAY PACK(STANDARD)
A19	RELEASED 56CKT V0 KEY 2 / KEY 4 HEADERS 1600133724 AND 1600133824 ECN#: 664151 J. PATE 05/17/2021
A18	PRODUCTION RELEASE OF V0 HEADER ASSEMBLIES ECN#: 648090 J. PATE 10/23/2020
A17	- ADDED V0 HEADER ASSEMBLIES - REMOVED OBSOLETE BOMS ENGINEERING RECORD: 636592 JPATE 04/05/2020

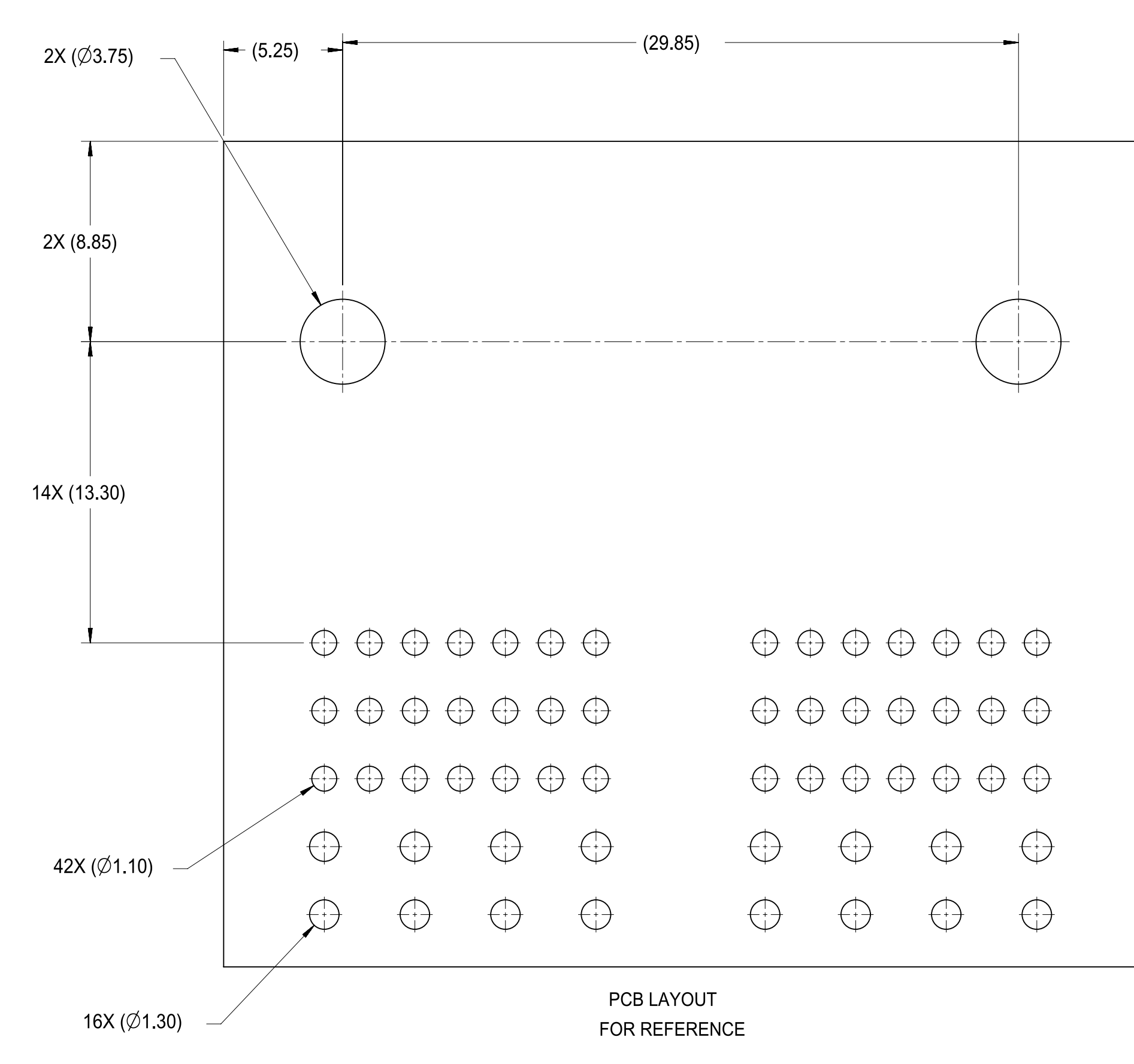
FUNCTIONAL SYMBOLS	THIS DRAWING CONTAINS INFORMATION THAT IS PROPRIETARY TO MOLEX ELECTRONIC TECHNOLOGIES, LLC AND SHOULD NOT BE USED WITHOUT WRITTEN PERMISSION		CURRENT REV DESC: SEE REVISION SHEET		molex
	DIMENSION UNITS	SCALE			
FA = 0	mm	5:1			INFOTAINMENT HDR ASSY STAK50H SYSTEM
FE = 0	GENERAL TOLERANCES (UNLESS SPECIFIED)				
FP = 0	ANGULAR TOL ± 3.0°				PRODUCT SALES DRAWING
DIVISIONAL SYMBOLS	4 PLACES	±	PHASE: Design Production		
	3 PLACES	±	CO NO: CO-000001199	2022-08-25	
	2 PLACES	± 0.130	DRWN: Kun Du	2022-08-30	
	1 PLACE	± 0.25	CHK'D: Ringo Hu	2022-09-19	
0 PLACES	±	APPR: Mike Vanslambrouck			
DRAFT WHERE APPLICABLE MUST REMAIN WITHIN DIMENSIONS		THIRD ANGLE PROJECTION	DRAWING	SERIES	DOCUMENT NUMBER
			D-SIZE	160013	SD-160013-0001
					DOC TYPE
					PSD
					DOC PART
					001
					REVISION
					A21
					MATERIAL NUMBER
					GENERAL MARKET
					CUSTOMER
					SHEET NUMBER
					1 OF 4



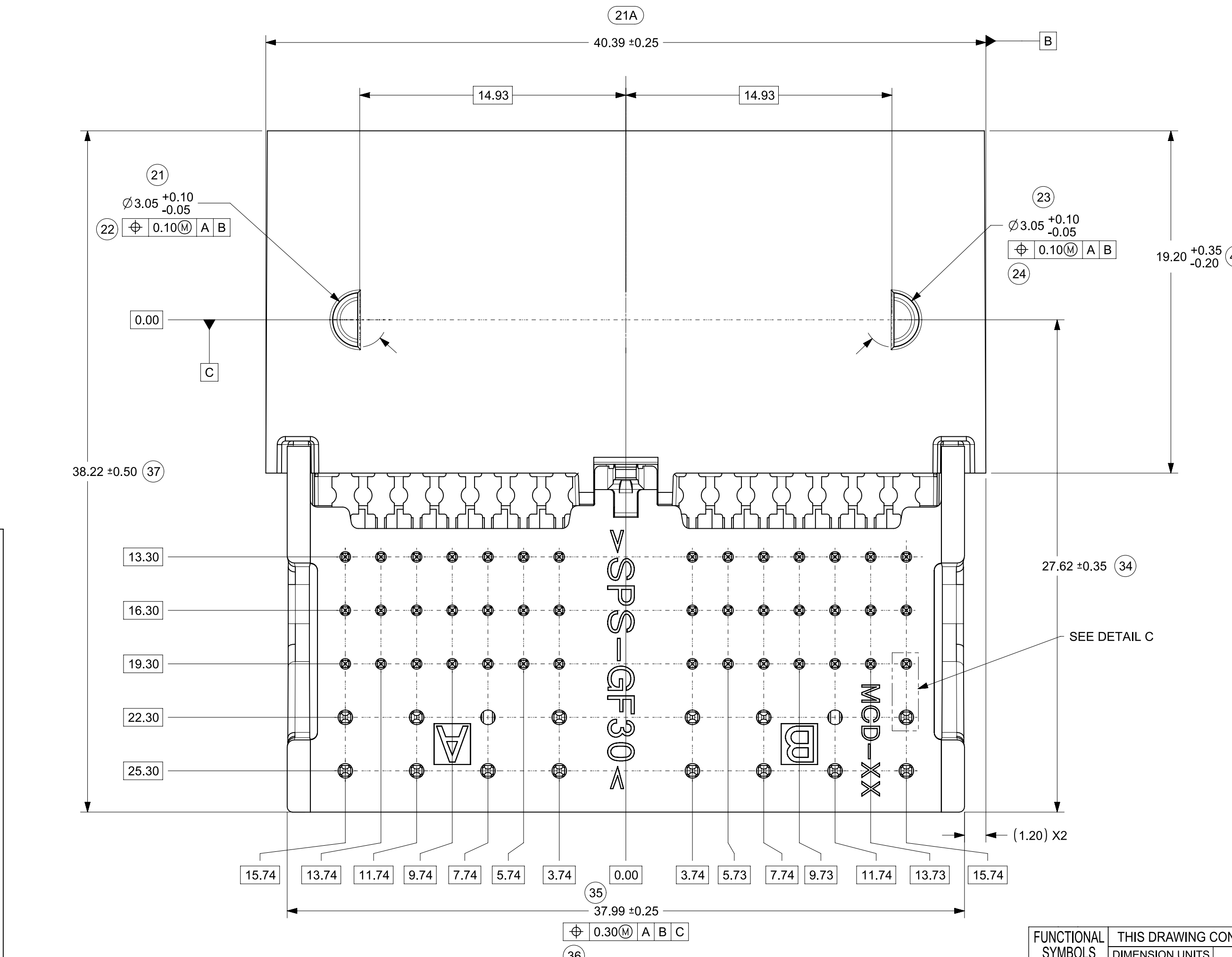
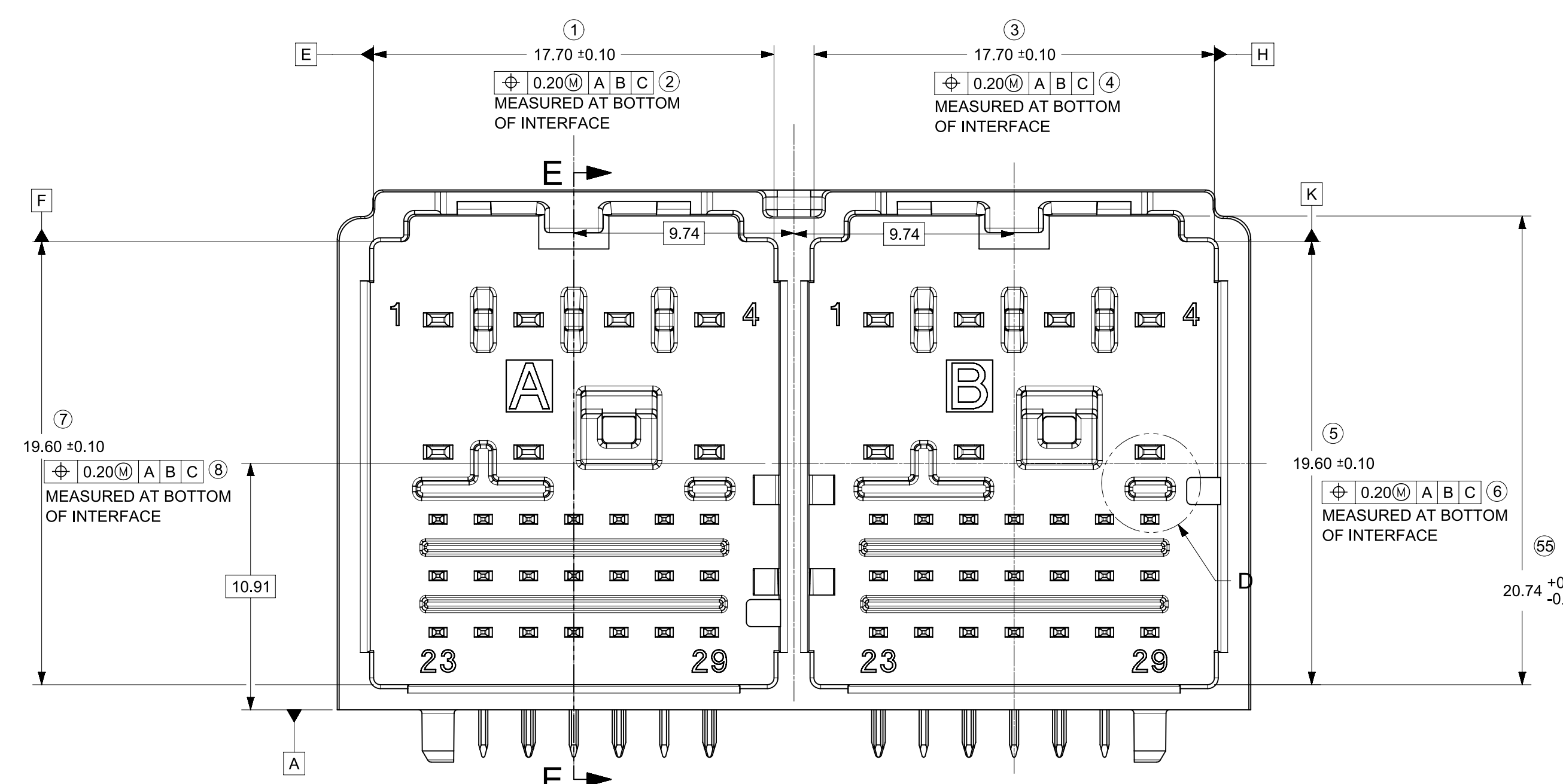
SECTION E-E



DETAIL F
SCALE 10:1



PCB LAYOUT
FOR REFERENCE



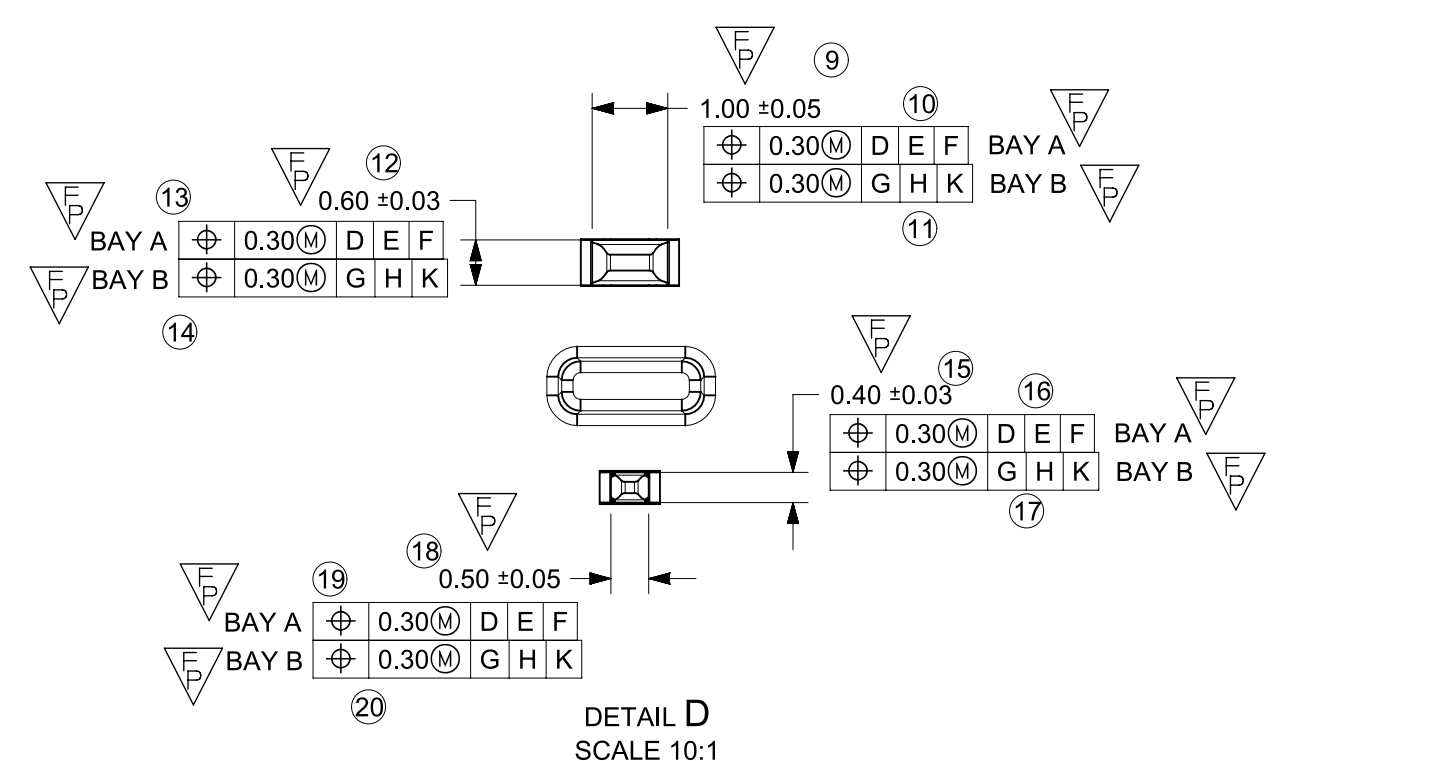
FUNCTIONAL SYMBOLS		THIS DRAWING CONTAINS INFORMATION THAT IS PROPRIETARY TO MOLEX ELECTRONIC TECHNOLOGIES, LLC AND SHOULD NOT BE USED WITHOUT WRITTEN PERMISSION	
SYMBOL	DIMENSION UNITS	SCALE	CURRENT REV DESC: SEE REVISION SHEET
$\nabla_A = 0$	mm	5:1	
$\nabla_E = 0$	GENERAL TOLERANCES (UNLESS SPECIFIED)		
$\nabla_P = 0$	ANGULAR TOL $\pm 3.0^\circ$		
	4 PLACES	\pm	
	3 PLACES	\pm	
	2 PLACES	± 0.130	
	1 PLACE	± 0.25	
	0 PLACES	\pm	
DIVISIONAL SYMBOLS		DRAFT WHERE APPLICABLE MUST REMAIN WITHIN DIMENSIONS	
		THIRD ANGLE PROJECTION	DRAWING SERIES
		D-SIZE	160013

PHASE: Design Production		2022-08-25	
CO NO: CO-000001199		2022-08-30	
DRWN: Kun Du		2022-09-19	
CHK'D: Ringo Hu			
APPR: Mike Vanslambrouck			
INITIAL REVISION:			
DRWN: RFC_PLMIMP			
APPR:			

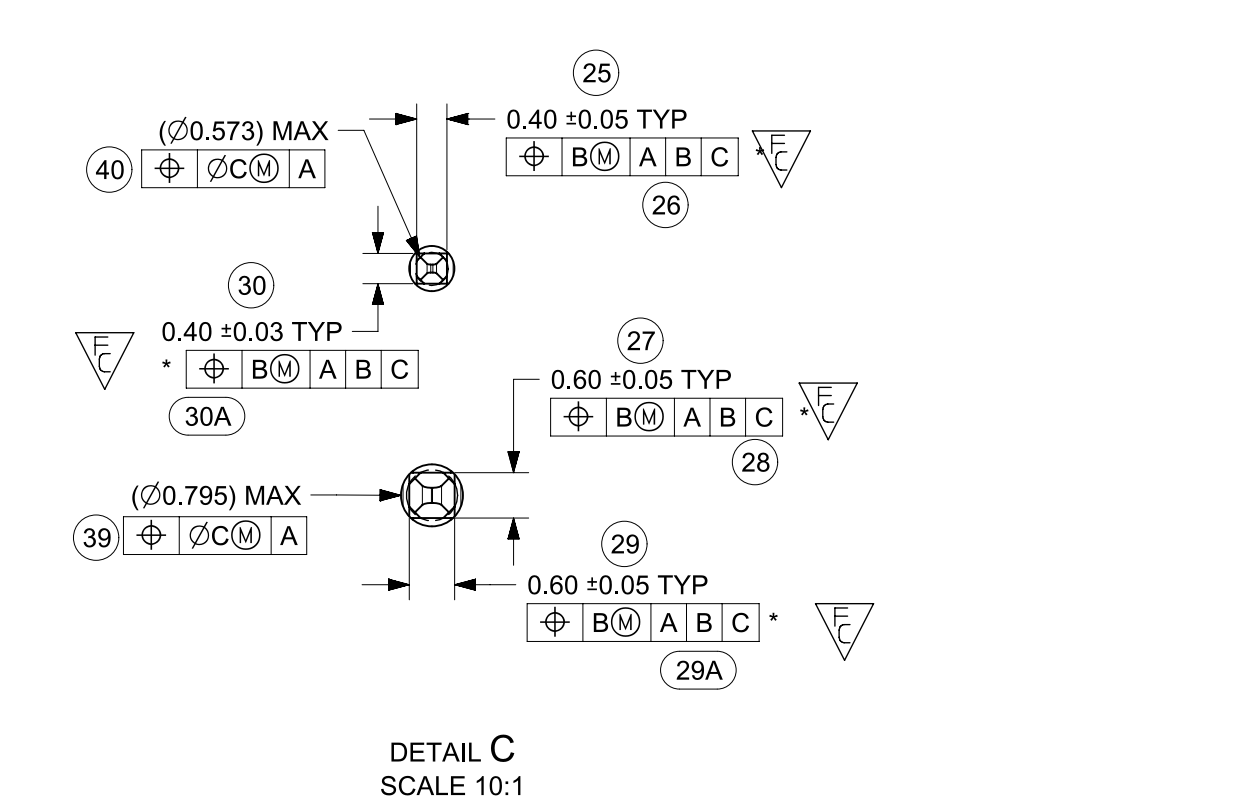
DOCUMENT NUMBER		DOC TYPE	DOC PART	REVISION
SD-160013-0001		PSD	001	A21
MATERIAL NUMBER		CUSTOMER		SHEET NUMBER
		GENERAL MARKET		2 OF 4

HEADER ASSEMBLY OPTIONS						
PART NUMBER	DIM A*	DIM AA*	DIM B*	DIM C*	DIM *D	DIM *E
1600130641	2.1	2.1	0.40	0.37	22.92	25.23
1600132641	2.1	2.1	0.40	0.37	22.92	25.23
1600130623	2.1	2.1	0.40	0.37	22.92	25.23
1600132623	2.1	2.1	0.40	0.37	22.92	25.23
1600131624	2.5	2.5	0.53	0.50	22.92	25.23
1600133641	2.5	2.5	0.53	0.50	22.92	25.23
1600133623	2.5	2.5	0.53	0.50	22.92	25.23
160013660X	2.5	2.5	0.53	0.50	22.92	25.23
1600134623	2.5	3.0	0.68	0.65	22.92	25.23
1600134141	2.5	3.0	0.68	0.65	22.92	25.23
1600134641	2.5	3.0	0.68	0.65	22.92	25.23
1600133624	2.5	2.5	0.53	0.50	22.92	25.23
1600133724	2.5	2.5	0.53	0.50	23.23	25.54
1600133741	2.5	2.5	0.53	0.50	22.92	25.23
1600133823	2.5	2.5	0.53	0.50	23.23	25.54
1600133824	2.5	2.5	0.53	0.50	23.23	25.54
1600133841	2.5	2.5	0.53	0.50	23.23	25.54
1600133941	2.5	2.5	0.53	0.50	22.92	25.23

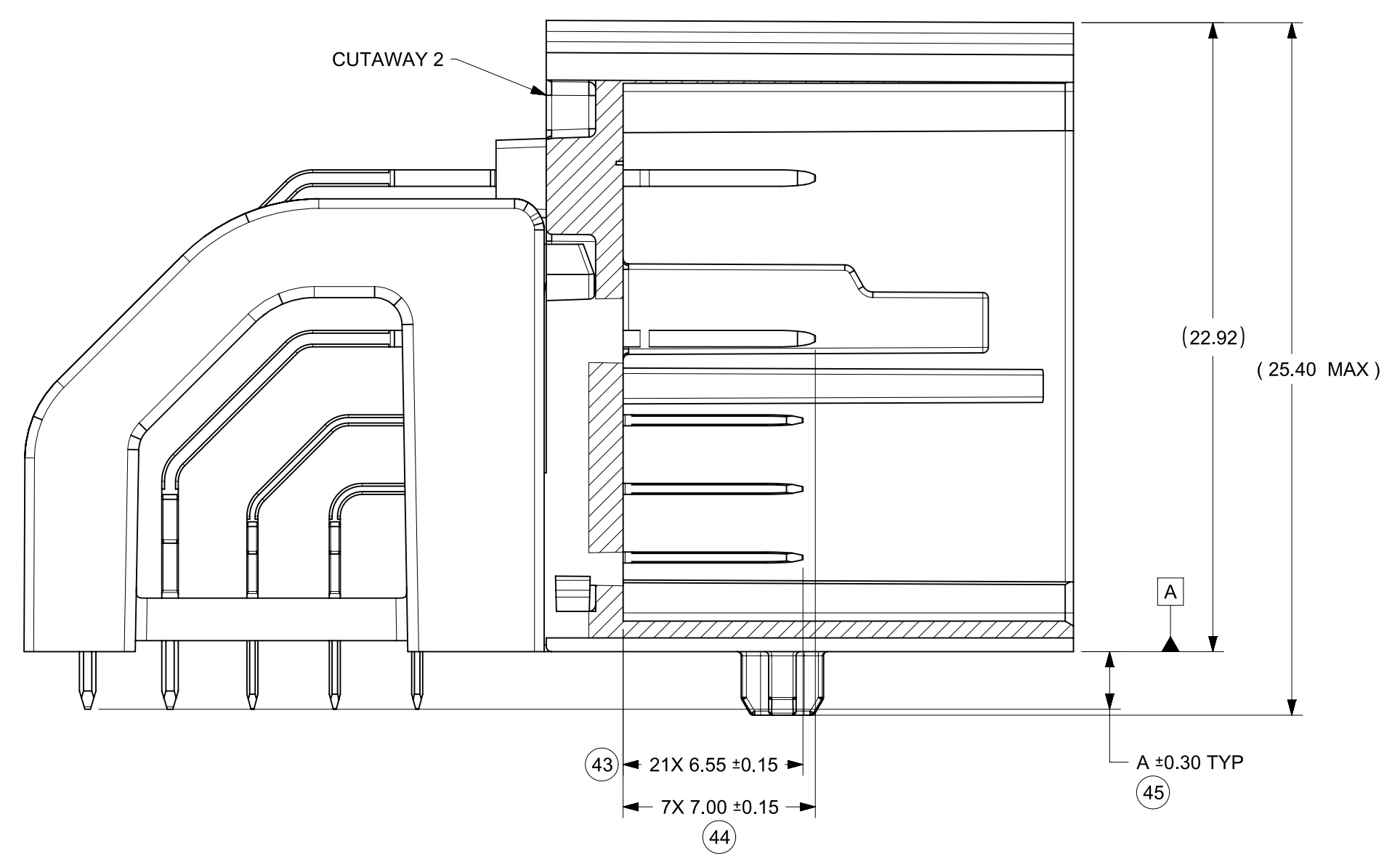
*X=1/2/3/4;



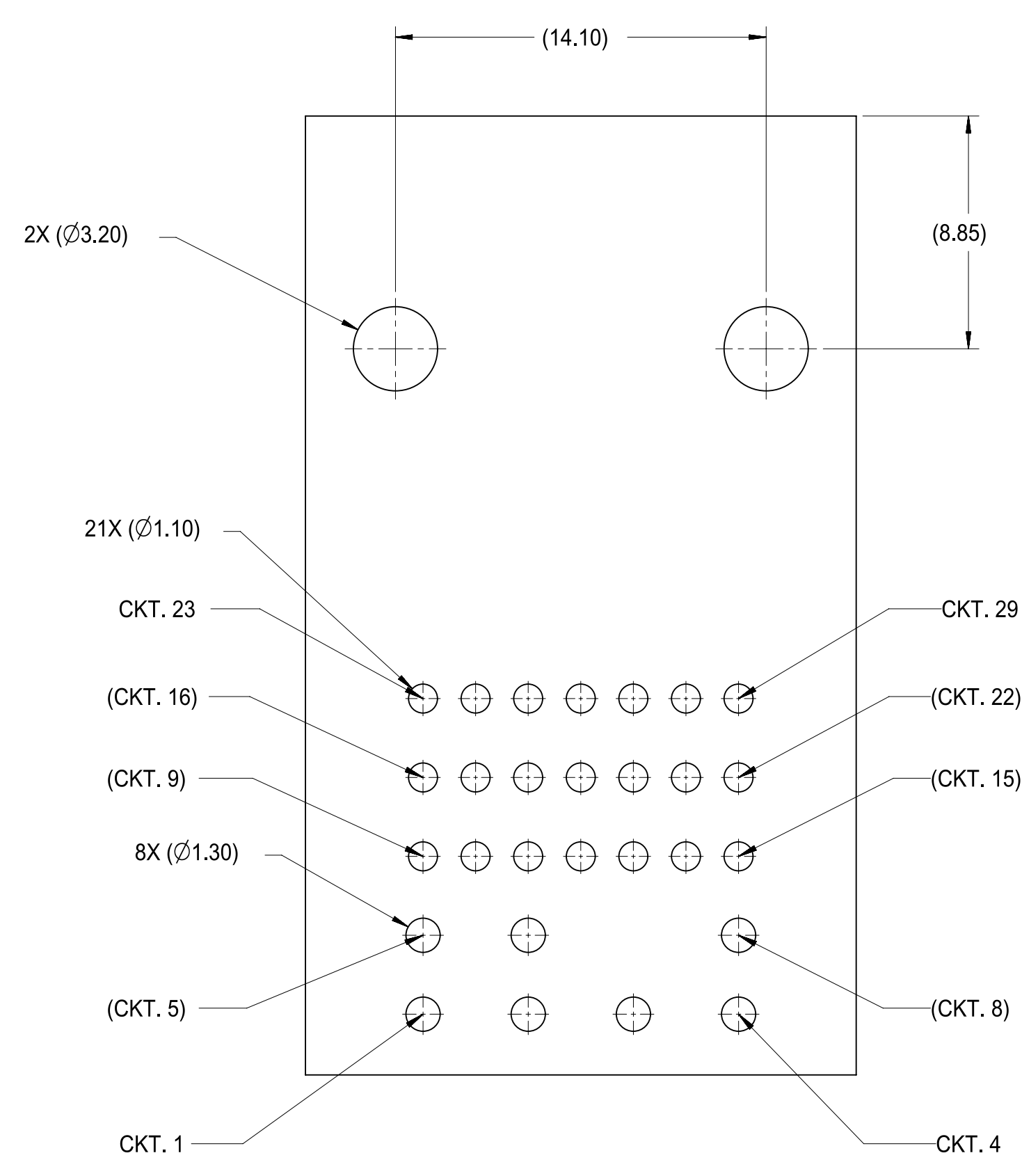
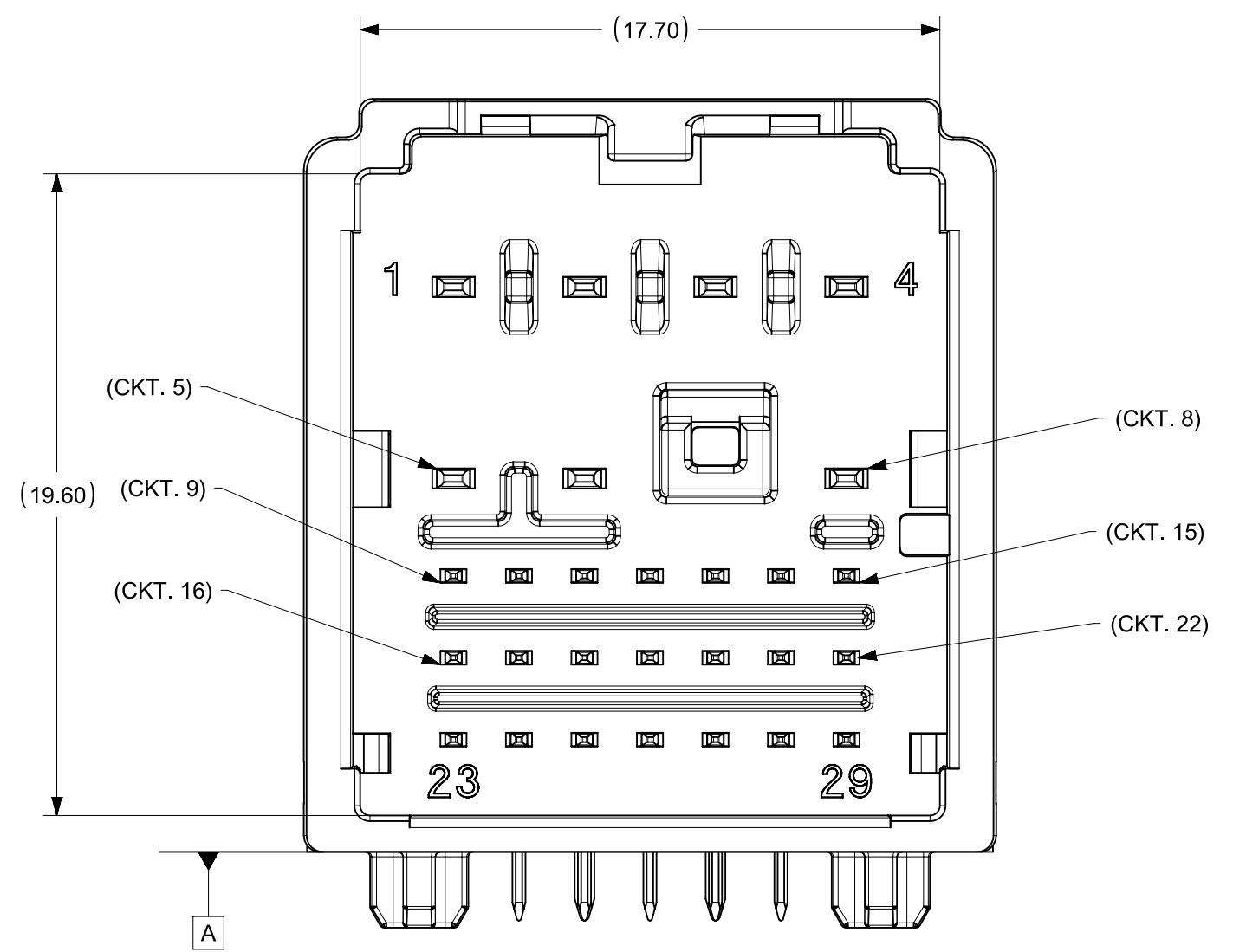
DETAIL D
SCALE 10:1



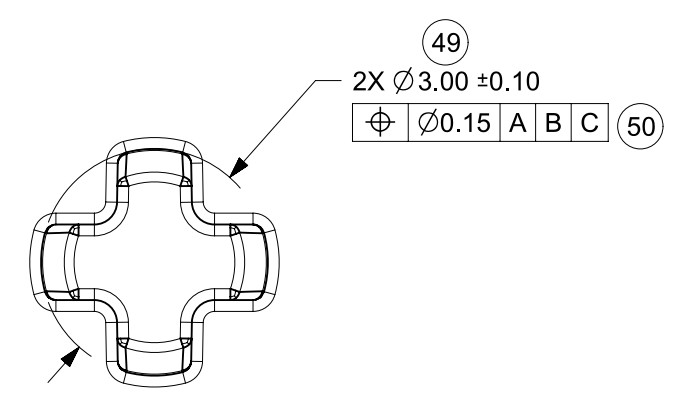
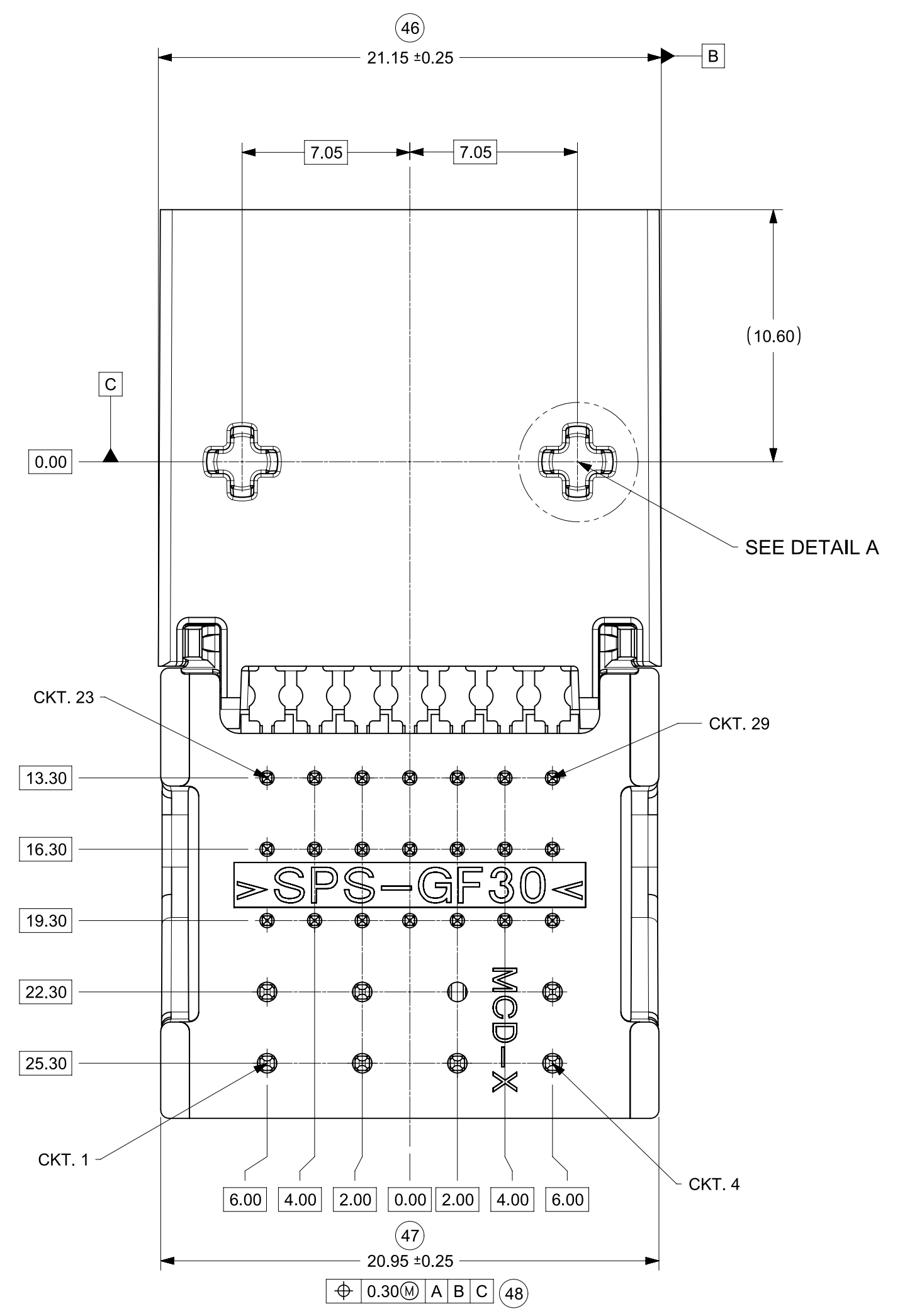
DETAIL C
SCALE 10:1



28WAY HEADER ONLY



PCB LAYOUT FOR REFERENCE ONLY



DETAIL A
SCALE 10:1

FUNCTIONAL SYMBOLS	THIS DRAWING CONTAINS INFORMATION THAT IS PROPRIETARY TO MOLEX ELECTRONIC TECHNOLOGIES, LLC AND SHOULD NOT BE USED WITHOUT WRITTEN PERMISSION		CURRENT REV DESC: SEE REVISION SHEET					
	DIMENSION UNITS	SCALE						
$F_A = 0$	mm	5:1	molex INFOTAINMENT HDR ASSY STAK50H SYSTEM PRODUCT SALES DRAWING					
$F_C = 0$	GENERAL TOLERANCES (UNLESS SPECIFIED)							
$F_P = 0$	ANGULAR TOL ± 3.0°							
DIVISIONAL SYMBOLS	4 PLACES	±				PHASE: Design Production		
	3 PLACES	±				CO NO: CO-000001199	2022-08-25	
	2 PLACES	± 0.130				DRWN: Kun Du	2022-08-30	
	1 PLACE	± 0.25	CHK'D: Ringo Hu	2022-09-19				
DRAFT WHERE APPLICABLE MUST REMAIN WITHIN DIMENSIONS		THIRD ANGLE PROJECTION	DRAWING	SERIES	MATERIAL NUMBER			
			D-SIZE	160013	SD-160013-0001			
			GENERAL MARKET	001	A21			
					3 OF 4			

