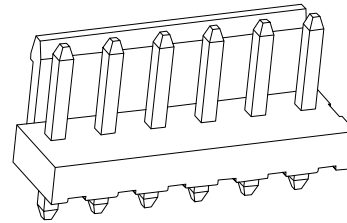
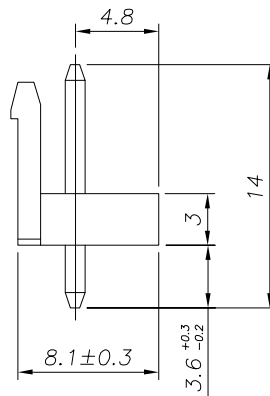
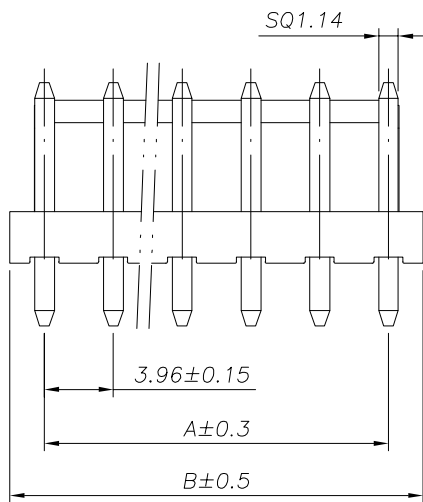


PCB LAYOUT



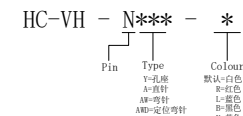
SPECIFICATIONS

- 1、Current Rating: 7A AC, DC
- 2、Voltage Rating: 250V AC, DC
- 3、Temperatuer Range: -25°C~ +85°C
- 4、Contact Resistance: 20mΩ Max
- 5、Insulation Resistance: 1000mΩ Min
- 6、Withstanding Voltang: 1500V AC/minute
- 7、Material: Wafer Nylon66 UL94-V0(2)  
PIN Brass Tin-plated



Circuit	Part NO.	Dimensions mm	
		A	B
2	HC-VH-2A2	3.96	7.92
3	HC-VH-3A2/ HC-VH-3A3	7.92	11.88
4	HC-VH-4A4	11.88	15.84
5	HC-VH-5A5	15.84	19.80
6	HC-VH-6A6	19.80	23.76
7	HC-VH-7A7	23.76	27.72
8	HC-VH-8A8	27.72	31.68
9	HC-VH-9A9	31.68	35.64
10	HC-VH-10A10	35.64	39.60
11	HC-VH-11A11	39.60	43.56
12	HC-VH-12A12	43.56	47.52
13	HC-VH-13A13	47.52	51.48
14	HC-VH-14A14	51.48	55.44
15	HC-VH-15A15	55.44	59.40

Ordering Information



			GENEAL TOLERANCE		制图 DRAWING		深圳市华灿天禄电子有限公司 ShenzhenhuacantianluELECTRONICS CO., LTD				
			DIM	TOL	审核 CHECK		产品名称 TITLE		VH (3.96) 直针	版本 REV.	A
			X. X	±0.30	批准 APPROVAL		产品料号 PART NO.		HC-VH-NAN	单位 UNITS	mm
1	初版发行		X. XX	±0.20	比例 SCALE		材料 MATERIAL			页次 SHEET	1/1
序号 No.	变更内容 MODIFY CONTENT	日期 MODIFY DATE	X. XXX	±0.10	投影 Projection						
			Angle	±3.0°							