

GT-TC108A-H034-L1S

G-Switch

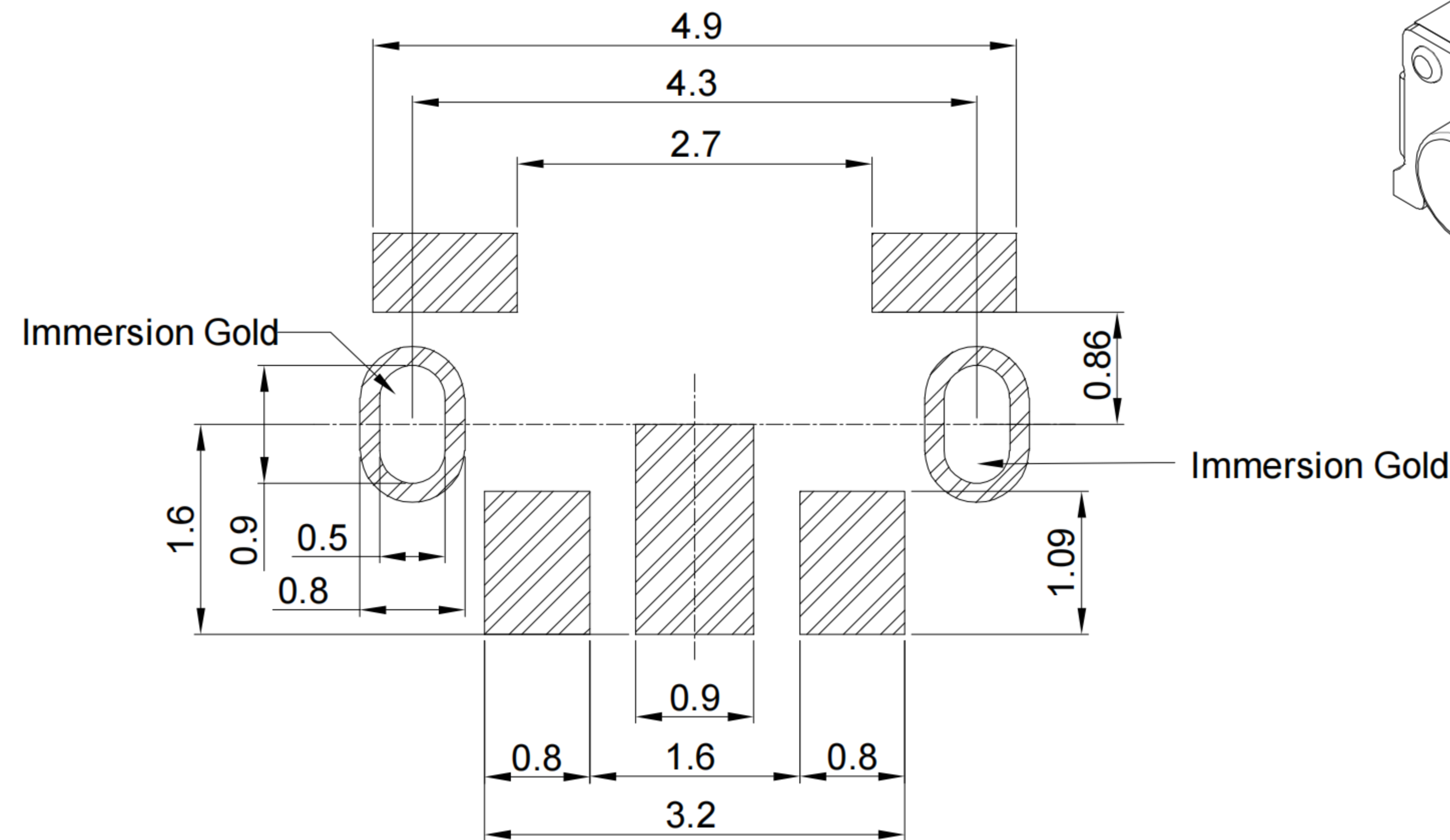
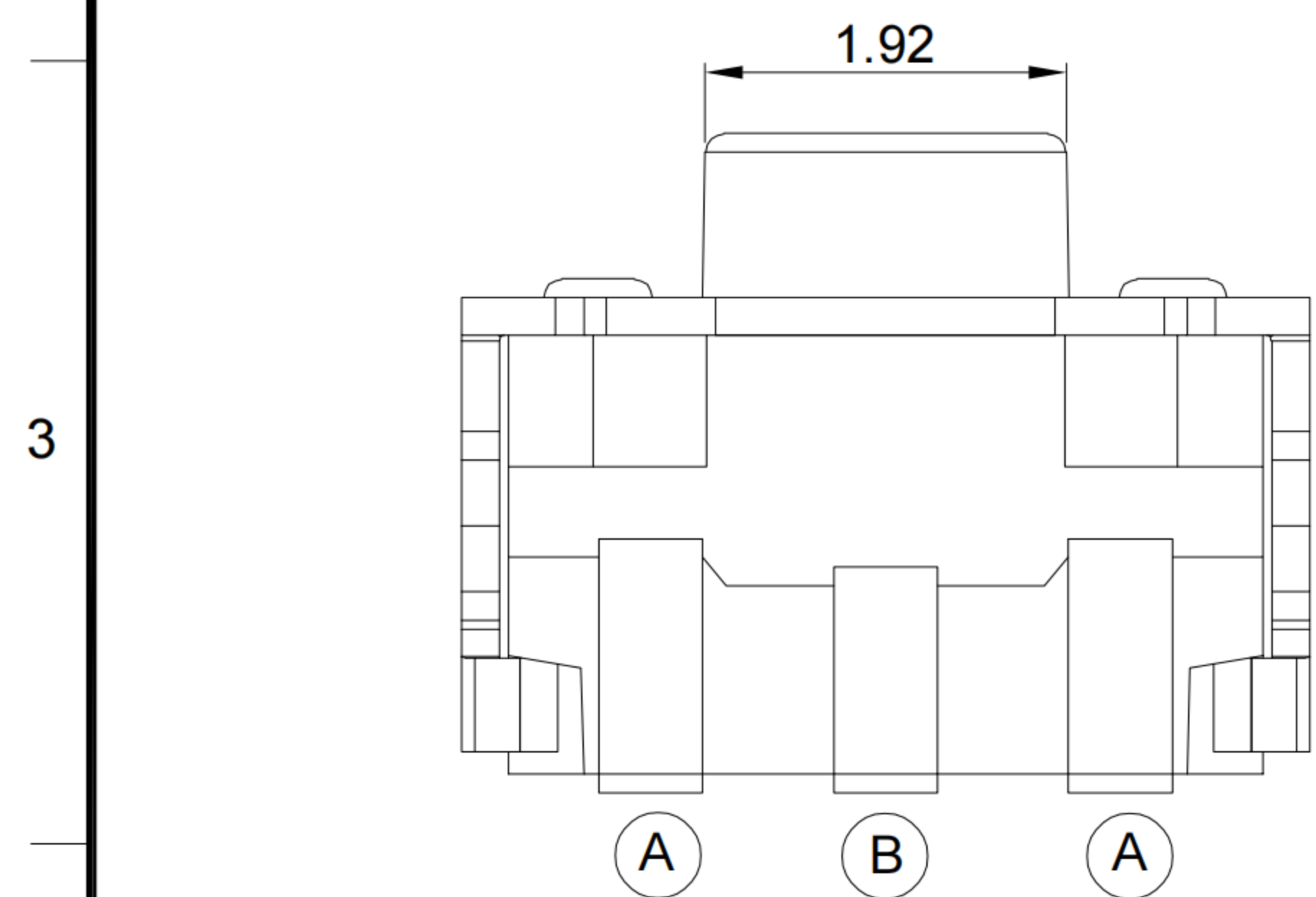
Operating Force

A=160gf
B=250gf
D=300gf

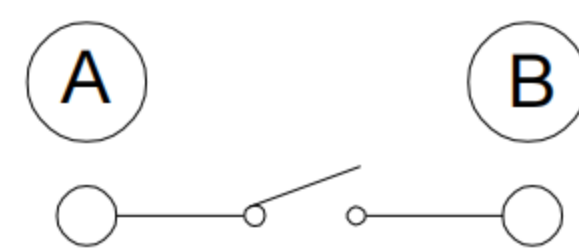
Operating Force
S=CK25-40%

Switch Height
H034=3.4mm

Switch Lifetime (Force)
L1=100,000 Cycles



RECOMMENDED PCB LAYOUT
TOLERANCE:±0.05



CIRCUIT DIAGRAM

G-Switch Specification:

1. Operating temperature range: -40°C ~ +85°C
2. Rating: 50mA, 12V DC
3. Insulation resistance: 100MΩ min. 100V DC
4. Dielectric strength: 250V AC for 1 min
5. Contact resistance: 100mΩ max.
6. Travel: 0.25±0.1mm

6	COVER	STAINLESS STEEL	
5	STEM	HIGH TEMPERATURE PLASTIC	BLACK
4	TAPE	POLYIMIDE	YELLOW (TRANSPARENT)
3	CONTACT	STAINLESS STEEL	Ag PLATING
2	TERMINAL	COPPER ALLOY	Ag PLATING
1	BASE	HIGH TEMPERATURE PLASTIC	BLACK
NO.	PART NAME	MATERIAL	REMARK



SCALE: 1:1 UNIT: mm
SIZE: A4

Unless otherwise
General Tolerance:
X. ±0.30
X.x ±0.20
X.xx ±0.15
X° ±3°

Title: Horizontal Tact Switch
SMT 4.1×3.2×3.4mm CK=25-40%

Molde Code: GT-TC108A-H034-L1S

DRAWN	CHECKED	APPROVED	DATE
Xia	Chen	Chen	2023.02.01



REV: A0 SHEET: 1/1