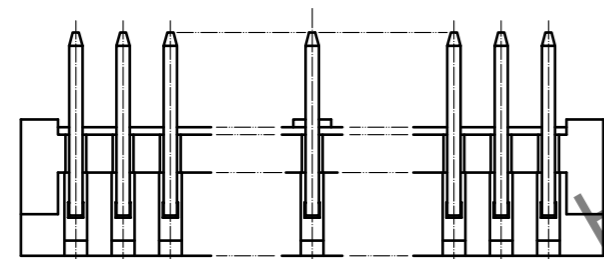
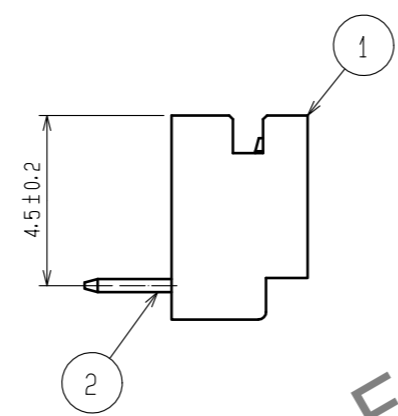
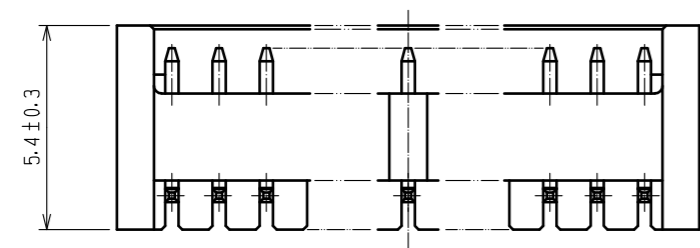
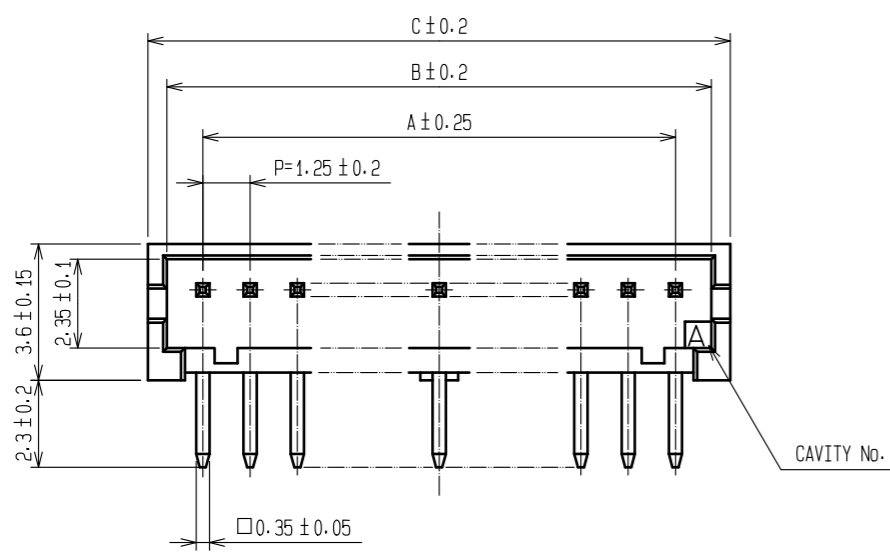


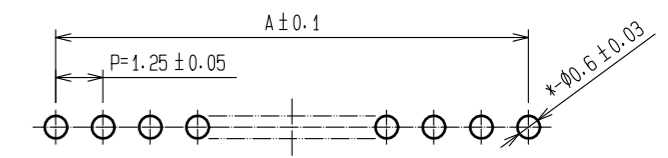
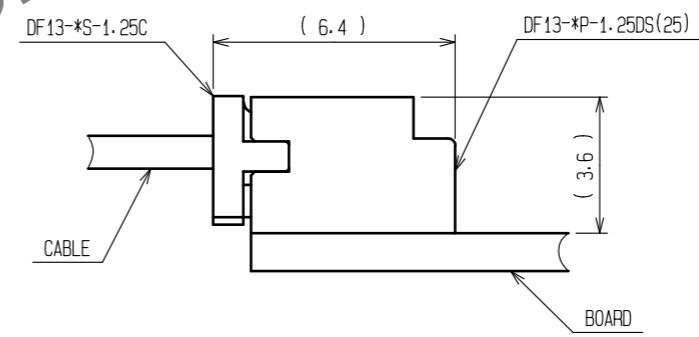
Apr.1.2024 Copyright 2024 HIROSE ELECTRIC CO., LTD. All Rights Reserved.
 In case of consideration for using Automotive equipment / device which demand high reliability, kindly contact our sales window correspondents.



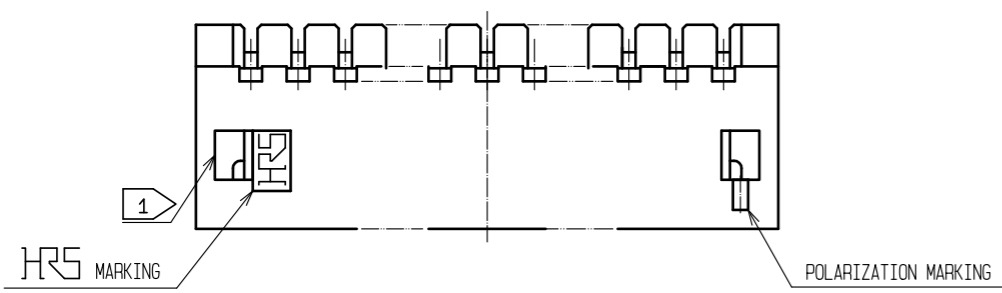
PART No.	CODE No.	NUMBER OF CONTACTS	A	B	C
DF13- 2P-1.25DS(25)	CL536-0151-7-25	2	1.25	3.15	4.15
DF13- 3P-1.25DS(25)	CL536-0152-0-25	3	2.50	4.40	5.40
DF13- 4P-1.25DS(25)	CL536-0153-2-25	4	3.75	5.65	6.65
DF13- 5P-1.25DS(25)	CL536-0154-5-25	5	5.00	6.90	7.90
DF13- 6P-1.25DS(25)	CL536-0155-8-25	6	6.25	8.15	9.15
DF13- 7P-1.25DS(25)	CL536-0156-0-25	7	7.50	9.40	10.40
DF13- 8P-1.25DS(25)	CL536-0157-3-25	8	8.75	10.65	11.65
DF13- 9P-1.25DS(25)	CL536-0158-6-25	9	10.00	11.90	12.90
DF13-10P-1.25DS(25)	CL536-0159-9-25	10	11.25	13.15	14.15
DF13-11P-1.25DS(25)	CL536-0160-8-25	11	12.50	14.40	15.40
DF13-12P-1.25DS(25)	CL536-0161-0-25	12	13.75	15.65	16.65
DF13-14P-1.25DS(25)	CL536-0163-6-25	14	16.25	18.15	19.15
DF13-15P-1.25DS(25)	CL536-0164-9-25	15	17.50	19.40	20.40

2 APPLICATION FIGURE

3 RECOMMENDED PATTERN (BOARD THICKNESS 1mm)

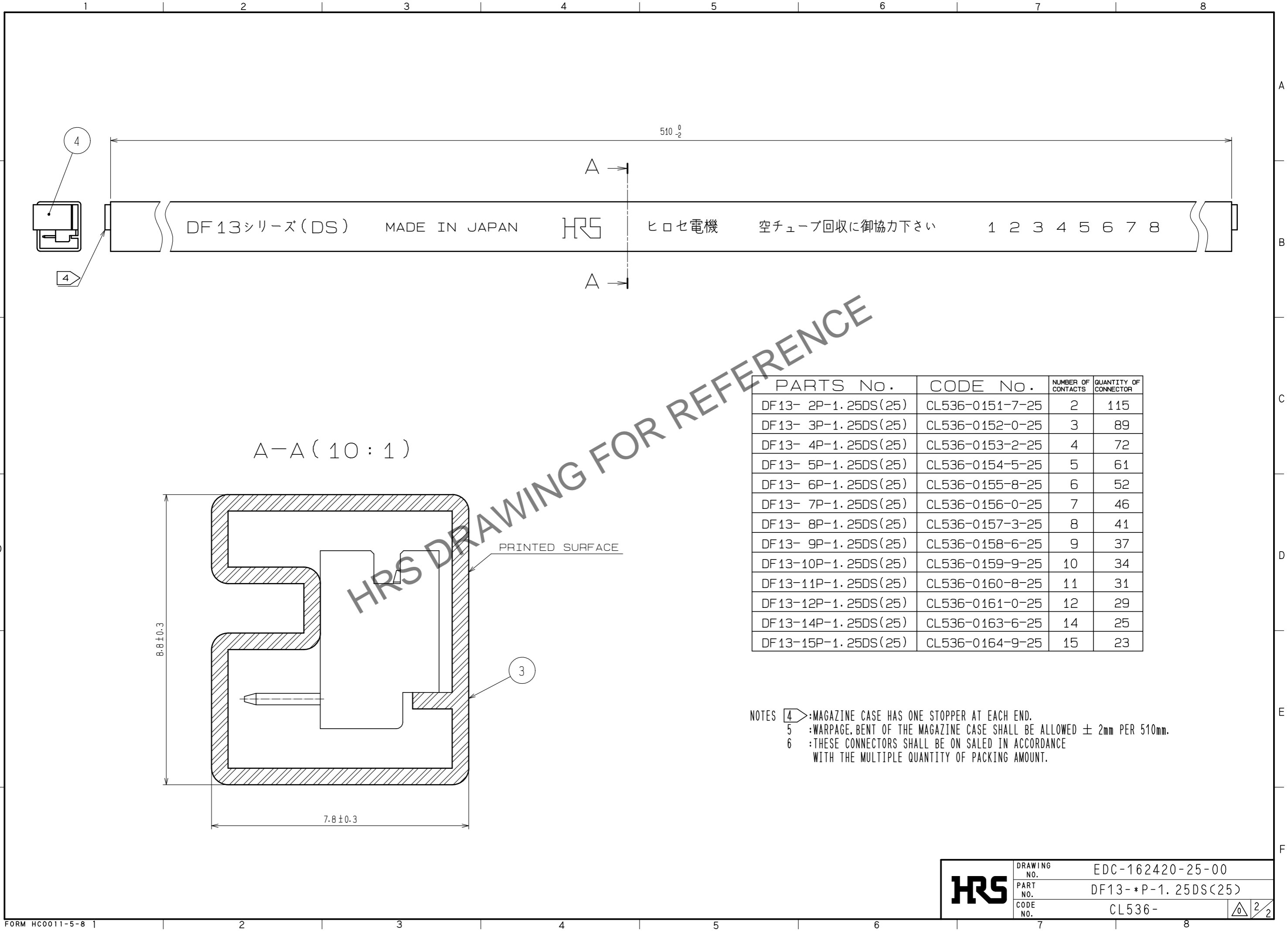


- NOTE 1 WHEN THIS CONNECTOR HAS TWO OR THREE CONTACTS, THE LOCK OF CONNECTOR SHALL BE SET AT THE CENTER OF HOUSING. IN CASE THAT THE NUMBER OF CONTACTS IS MORE THAN FOUR, THE TWO LOCKS SHALL BE SET IN ACCORDANCE WITH THE LEFT DRAWINGS.
- 2 WHEN THIS CONNECTOR MATES WITH DF13-S-1.25C, THE MATING LENGTH IS 6.4mm.
- 3 RECOMMENDED DIP POST DIA. : $\phi 0.6 \pm 0.03$



2	BRASS	SURFACE:TIN PLATED 1μm min. UNDER:COPPER PLATED 1μm min.	4	ELASTOMER	STOPPER, GRAY			
1	POLYAMIDE	NATURAL (BEIGE), UL94V-0	3	P S	ELECTROSTATIC PROTECTION, CLEAR			
NO.	MATERIAL	FINISH . REMARKS	NO.	MATERIAL	FINISH . REMARKS			
UNITS mm		SCALE 5 : 1		COUNT	DESCRIPTION OF REVISIONS	DESIGNED	CHECKED	DATE
HRS HIROSE ELECTRIC CO., LTD.		APPROVED : SJ. OKAMURA 20211216	DRAWING NO.		EDC-162420-25-00			
		CHECKED : SZ. ONO 20211216	PART NO.		DF13-*P-1.25DS(25)			
		DESIGNED : TH. SATO 20211215	CODE NO.		CL536-			
		DRAWN : TH. SATO 20211215						

Apr.1.2024 Copyright 2024 HIROSE ELECTRIC CO., LTD. All Rights Reserved.
 In case of consideration for using Automotive equipment / device which demand high reliability, kindly contact our sales window correspondents.



PARTS No.	CODE No.	NUMBER OF CONTACTS	QUANTITY OF CONNECTOR
DF13- 2P-1.25DS(25)	CL536-0151-7-25	2	115
DF13- 3P-1.25DS(25)	CL536-0152-0-25	3	89
DF13- 4P-1.25DS(25)	CL536-0153-2-25	4	72
DF13- 5P-1.25DS(25)	CL536-0154-5-25	5	61
DF13- 6P-1.25DS(25)	CL536-0155-8-25	6	52
DF13- 7P-1.25DS(25)	CL536-0156-0-25	7	46
DF13- 8P-1.25DS(25)	CL536-0157-3-25	8	41
DF13- 9P-1.25DS(25)	CL536-0158-6-25	9	37
DF13-10P-1.25DS(25)	CL536-0159-9-25	10	34
DF13-11P-1.25DS(25)	CL536-0160-8-25	11	31
DF13-12P-1.25DS(25)	CL536-0161-0-25	12	29
DF13-14P-1.25DS(25)	CL536-0163-6-25	14	25
DF13-15P-1.25DS(25)	CL536-0164-9-25	15	23

NOTES 4: MAGAZINE CASE HAS ONE STOPPER AT EACH END.
 5: WARPAGE, BENT OF THE MAGAZINE CASE SHALL BE ALLOWED ± 2mm PER 510mm.
 6: THESE CONNECTORS SHALL BE ON SALED IN ACCORDANCE WITH THE MULTIPLE QUANTITY OF PACKING AMOUNT.

HRS	DRAWING NO.	EDC-162420-25-00
	PART NO.	DF13-*P-1.25DS(25)
	CODE NO.	CL536-

2/2