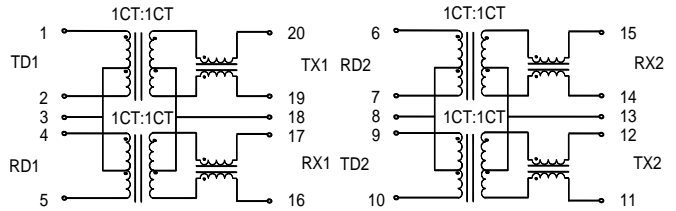
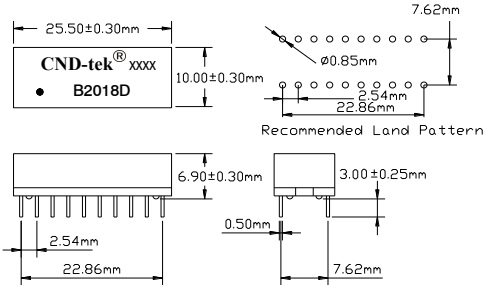


1. Compatible with various 10/100 Base-TX transceiver requiring 1:1 transmit and receive turns ratio
2. Compliant with IEEE 802.3 standard including baseline wander compensation specification of 350 $\mu$ H OCL when Biased at 8mA from 0 $^{\circ}$ C to 70 $^{\circ}$ C
3. Double channel interface for 10/100Mbps Ethernet applications with CMC's tuned to Enhance EMC system performance
4. Available in Through Hole package.
5. Operating Temperature range: 0 $^{\circ}$ C TO +70 $^{\circ}$ C
6. Storage temperature range: -25 $^{\circ}$ C TO +125 $^{\circ}$ C



## DIMENSIONS & SCHEMATICS

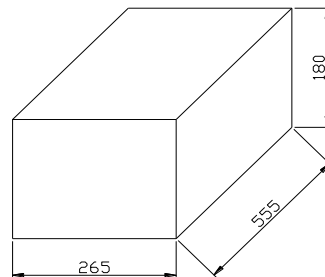
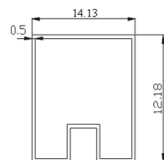
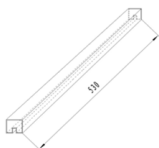


**Note:** 1、Dimension: mm, 2.Unless otherwise specified,tolerances are:  $\pm 0.05$ mm

## TECHNICAL SPECIFICATIONS

OCL :	350 $\mu$ H Min. @ 100 KHz, 100mV with 8mA DC Bias
Leakage Inductance:	0.5 $\mu$ H Max. @ 100KHz, 0.2V
Cw/w:	56F Max. @ 100KHz, 0.2V
DCR:	1.20 $\Omega$ Max.
Turns Ratio( $\pm 5\%$ ):	1CT:1(TX), 1CT:1(RX)
Polarity:	1-20, 4-17, 6-15, 9-12 In-Phase
Insertion Loss:	-1.1 dB Max. (TX & RX)@ 1-100 MHz
Return Loss:	-18 dB Min @ 0.5-30MHz -15 dB Min @ 40 MHz -13 dB Min @ 60 MHz -11 dB Min @ 80 MHz -10 dB Min.@ 100 MHz
Cross Talk:	-45 dB Min.@ 30 MHz -40 dB Min.@ 60 MHz -35 dB Min.@ 100 MHz
Common Mode Rejection :	-43 dB Min.@ 1-30 MHz -37 dB Min.@ 60 MHz -33 dB Min.@ 80-100 MHz
Isolation HI-POT:	1500Vrms 1mA 1Second

## PACKING SPECIFICATION



1. units/reel:20PCS
- 2.reel/carton:280PCS
- 3.units/carton :5600PCS