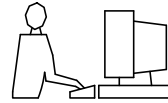


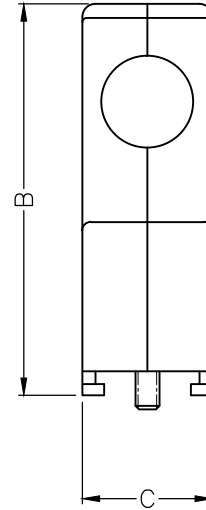
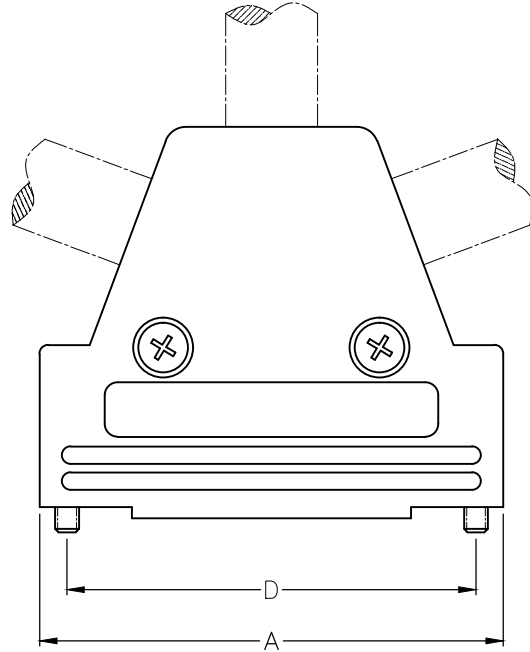
THIS IS A C.A.D. GENERATED DRAWING
DO NOT MAKE MANUAL REVISIONS TO MASTER.



* UNLESS OTHERWISE SPECIFIED TOLERANCES
ON DECIMAL IS: ANGLE ±1°
UNIT: MM

BACKSHELL KIT INCLUDES:

- (2)BACKSHELL HALVES
- (2)JACKSCREW 4-40
- (2)SHELL SCREW
- (2)METAL CLAMP
- (4)CLAMP SCREW
- (2)BLANKING PLATE



DIMENSIONS(mm/in)				
Size	A ^{±1.30} _{±0.051}	B ^{±1.30} _{±0.051}	C ^{±1.20} _{±0.047}	D ^{±0.25} _{±0.01}
9	31.00	41.40	15.00	24.99
	1.221	1.630	0.591	0.984
15	40.30	45.20	15.00	33.32
	1.587	1.780	0.591	1.312
25	53.50	45.20	15.00	47.04
	2.106	1.780	0.591	1.852
37	70.00	45.20	15.00	63.50
	2.756	1.780	0.591	2.500

ORDERING INFORMATION:

SIZE	P/N-KITTED	PRODUCT CODE
9-WAY	6550-0100-01	MHTRI-M-9-K
15-WAY	6550-0100-02	MHTRI-M-15-K
25-WAY	6550-0100-03	MHTRI-M-25-K
37-WAY	6550-0100-04	MHTRI-M-37-K

BACKSHELL MATERIAL:	ABS UL 94-HB RATED
PLATING:	NICKEL
JACKSCREW 4-40:	STEEL ZINC PLATED
SHELL SCREW:	STEEL ZINC PLATED
METAL CLAMP:	STEEL ZINC PLATED
CLAMP SCREW:	STEEL ZINC PLATED
BLANKING PLATE:	ABS UL RECOGNIZED
PLATING:	NICKEL
OPERATING TEMP:	-55°C TO +120°C

THESE DRAWINGS AND SPECIFICATIONS ARE THE PROPERTY OF MH CONNECTORS AND SHALL NOT BE REPRODUCED, COPIED OR USED AS THE BASIS FOR THE MANUFACTURE OR SALE OF APPARATUS WITHOUT WRITTEN PERMISSION.

DRAWN Johnny	DATE 11-24-15
-----------------	------------------

APPROVED Victor Lin	DATE 11-24-15
------------------------	------------------

SCALE 1 : 1	SHEET OF 1 OF 1	REV: 7.0
----------------	--------------------	-------------

DRAWING No
MHTRI-M-SERIES



THIS SERIES FULLY CONFORMS TO THE EUROPEAN UNION DIRECTIVES 2002/95/EC AND 2002/96/EC FOR RoHS COMPLIANCY.



**MH CONNECTORS ,
DIVISION OF EDAC**