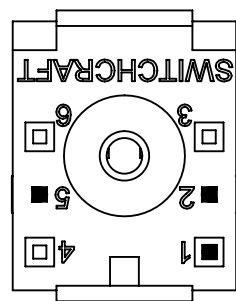
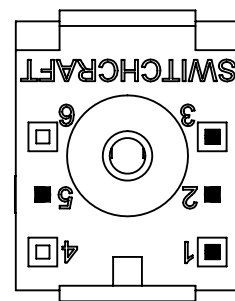


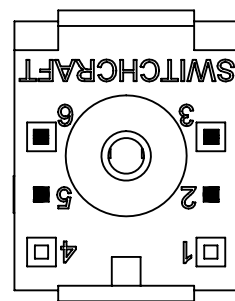
**982A01RX**  
BOTTOM VIEW  
1 "A" CIRCUIT



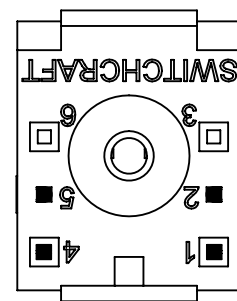
**982A02RX**  
BOTTOM VIEW  
1 "B" CIRCUIT



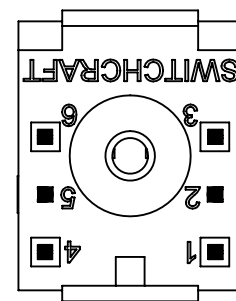
**982A03RX**  
BOTTOM VIEW  
1 "C" CIRCUIT  
BREAK BEFORE MAKE



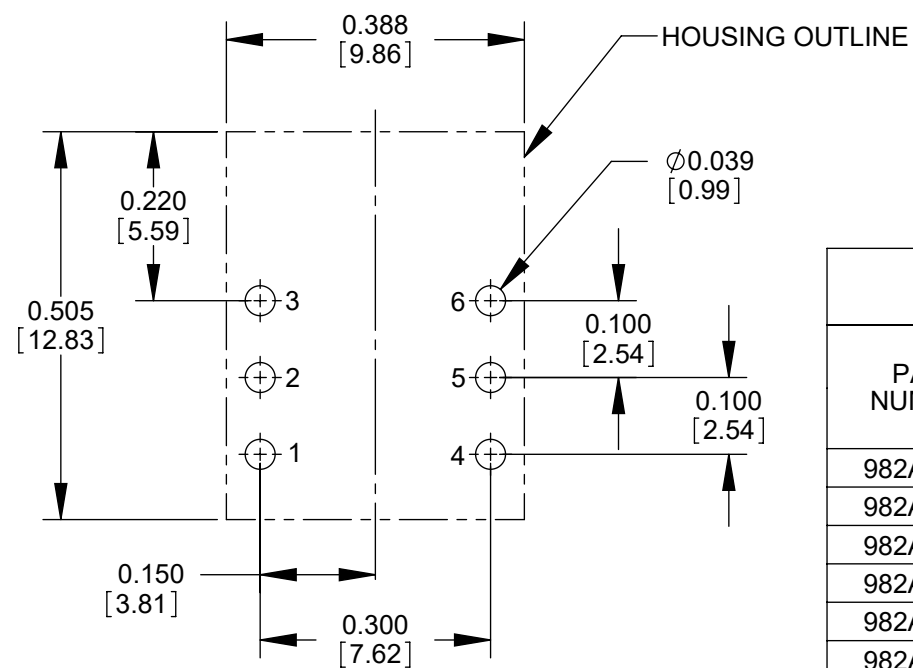
**982A04RX**  
BOTTOM VIEW  
2 "A" CIRCUIT



**982A05RX**  
BOTTOM VIEW  
2 "B" CIRCUIT



**982A06RX**  
BOTTOM VIEW  
2 "C" CIRCUIT

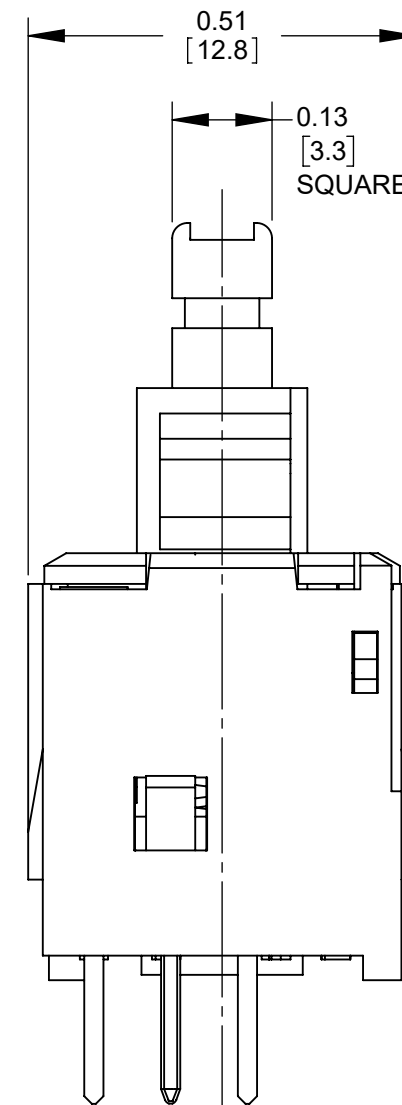
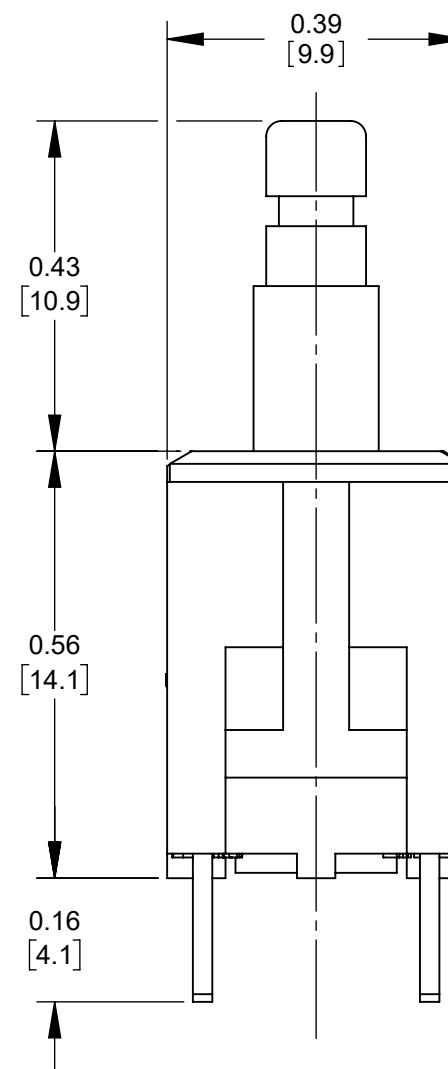
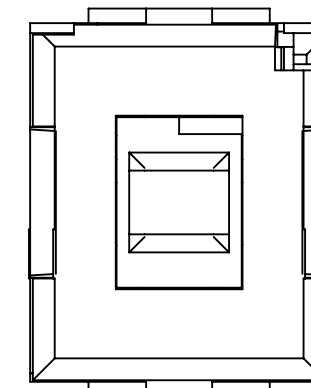


**RECOMMENDED PC BOARD LAYOUT**  
SCALE 4:1

**TERMINAL FUNCTION BY TERMINAL NUMBER**

PART NUMBER	CIRCUIT	FIRST POLE			SECOND POLE		
		N.O.	N.C.	COMMON	N.O.	N.C.	COMMON
982A01RX	1-A	3	-	2	-	-	5*
982A02RX	1-B	-	1	2	-	-	5*
982A03RX	1-C	3	1	2	-	-	5*
982A04RX	2-A	3	-	2	6	-	5
982A05RX	2-B	-	1	2	-	4	5
982A06RX	2-C	3	1	2	6	4	5

\* PIN IS USED AS A SUPPORT PIN FOR MOUNTING AND HAS NO ELECTRICAL CONNECTION.



**CUSTOMER DRAWING**

**NOTES:**

- MATERIALS:**  
HOUSING - THERMOPLASTIC, BLACK  
PLUNGER - THERMOPLASTIC, WHITE  
SPRING - TINNED MUSIC WIRE  
CONTACTORS - SPECIAL COPPER ALLOY  
CONTACT SURFACES - GOLD PLATED  
TERMINALS - COPPER ALLOY, TIN PLATED
- ACTUATION FORCE:**  
MOMENTARY SWITCHES 12-15 oz.
- PLUNGER TRAVEL:** 0.14
- CONTACT RESISTANCE** 0.010 OHMS MAXIMUM WHEN SWITCH IS IN CLOSED POSITION.
- ALL DIMENSIONS ARE FOR REFERENCE ONLY.
- THESE PRODUCTS ARE RoHS COMPLIANT.

REV	ECO NUMBER	DATE	BY	APVD
C	28440	11-23-21	PC	TJK
B	25464	09-29-06	TJK	TJK
A	26090	07-22-06	TJK	TJK

REVISIONS

**UNLESS OTHERWISE SPECIFIED**

- ALL DIMENSIONS IN INCHES [mm]
- TWO PLACE DECIMALS ±0.02 [0.5]
- THREE PLACE DECIMALS ±0.005 [0.13]

**DO NOT SCALE DRAWING**

THIS DRAWING DESCRIBES A DESIGN CONSIDERED PROPRIETARY IN NATURE, DEVELOPED AND MANUFACTURED BY SWITCHCRAFT INC. AND IS RELEASED ON A CONFIDENTIAL BASIS FOR IDENTIFICATION PURPOSES ONLY.

SIZE	WIDTH	MULT	LBS/M	TEMPER
FINISH SPEC No.			MATERIAL SPEC No.	
FIRST USED ON		SCALE 4:1		
DATE DRAWN	BY	CHKD	APVD	
02-25-10	TJK	TJK	TJK	
			02-25-10	02-25-10
NAME			PART No.	
MOMENTARY IBS SWITCH SHORT TERMINALS, RoHS			982A0_RX SERIES	
				REV C