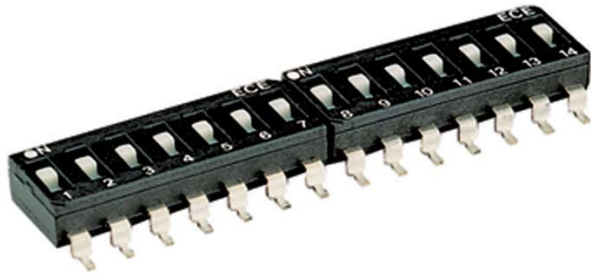




ESD/ESL SERIES
END-STACKABLE SMT TYPE



ESD



ESL

■ FEATURES

- End stackable for standard 0.1" integrated circuit pitch.
- Molded 0.3" integrated circuit packing outline allowing automatic insertion.
- Smaller size makes better heat convection during PC board reflow wave soldering.
- Top tape sealed to withstand wave soldering, board washing.
- All plastics are UL 94V-0 grade fire retardant.
- Twin contacts designed to ensure stable contact.
- Gold plated contact to ensure low contact resistance and Tin plated terminals to prevent contamination during soldering.
- RoHS Compliant

■ APPLICATIONS

- Numerical setting for computer terminal equipment
- Price setting for vending machines
- Programming for game machines
- Programming for industrial equipment and measuring instruments

■ SPECIFICATIONS

1.ELECTRICAL

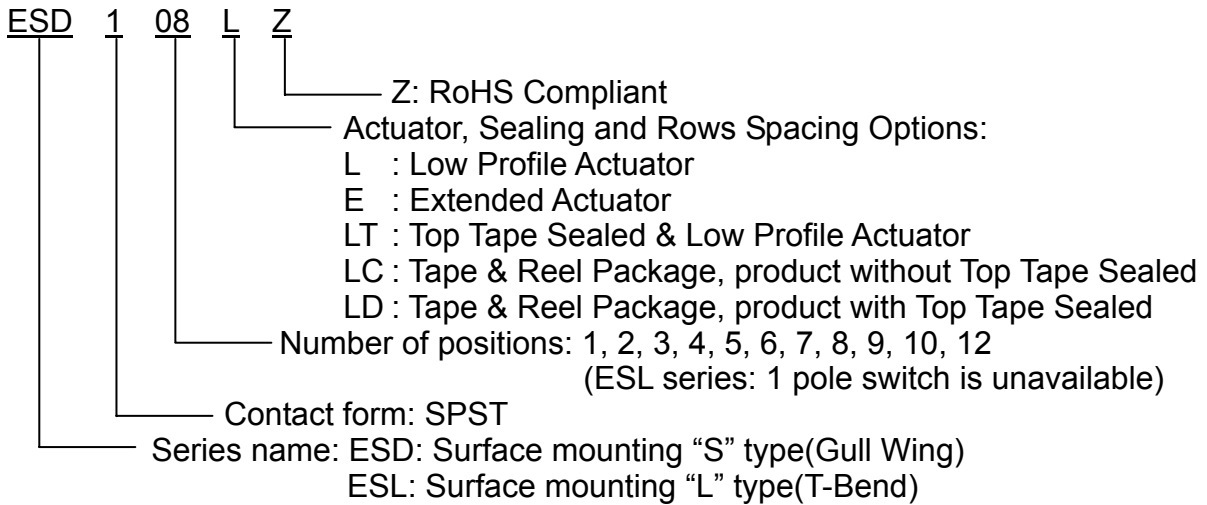
● Contact rating	switching	25mA, 24VDC
	non-switching	100mA
● Contact resistance	initial	50mΩ Max.
	after life test	100mΩ Max.
● Insulation resistance	1000MΩ Min. at 100VDC	
● Dielectric strength	500VDC Min. for 60 seconds	
● Capacitance between adjacent switches 5pF Max.		



2.MECHANICAL and ENVIRONMENTAL

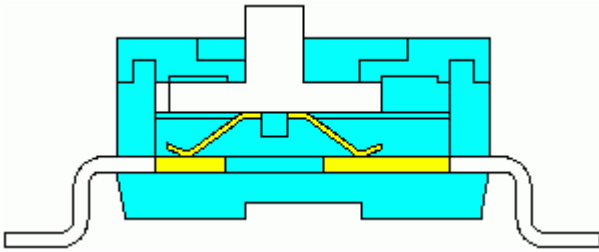
● Temperature rating	operating	-40°C to +85°C
	storage	-40°C to +85°C
● Operation force	800g Max.	
● Mechanical life	2000 operations	
● Humidity	95% RH, 40°C for 96 Hrs.	
● Vibration	10Hz-55Hz-10Hz for 6 Hrs.	
● Resistance to soldering heat	Solder reflow:peak temperature 260°C Max.	
● Reflow soldering process for SMT type	Reference IEC 61760	

■ PART NUMBERING SYSTEM

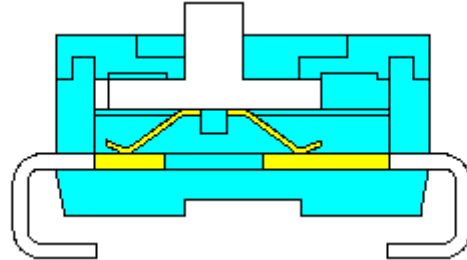


CONSTRUCTION

ESD



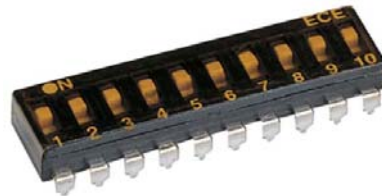
ESL



OPTIONS

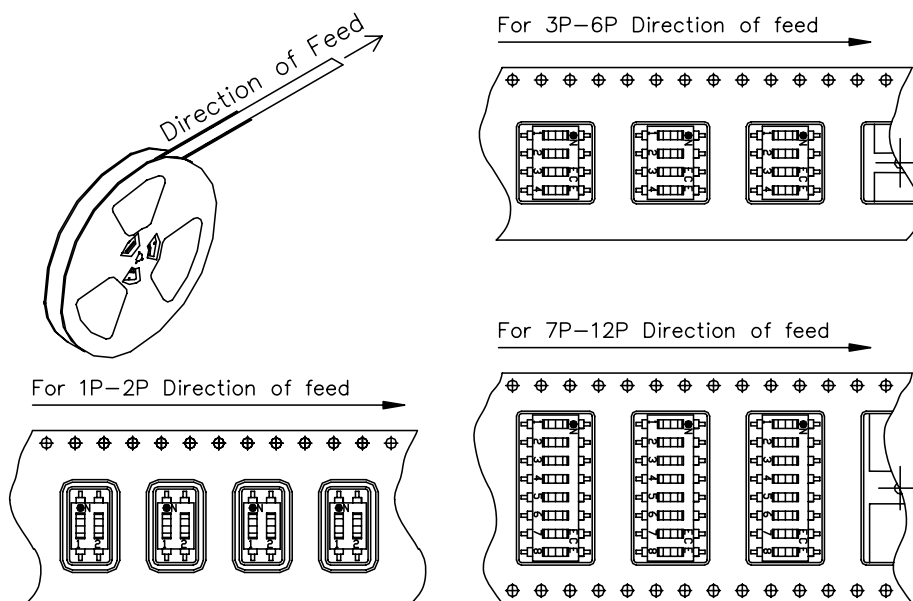
1. Special marking is available
2. Extended Actuator

3. Top Tape Sealed



PACKAGING

1. Tape & Reel Packaging (per EIA STANDARD)



TYPE	No. of pcs per reel
1P	2000
2P	1300
3P	1000
4P	1000
5P	1000
6P	1000
7P	1000
8P	1000
9P	1000
10P	1000
12P	1000

(ESL series: 1 pole switch is unavailable)

DIMENSIONS AND CIRCUITRY

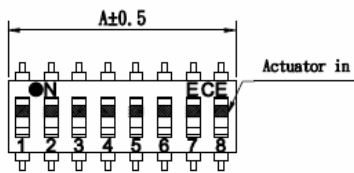
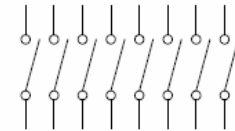
ESD SERIES

Dimension A

UNIT:mm(inch)

CIRCUIT DIAGRAM

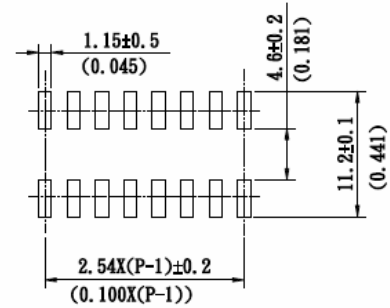
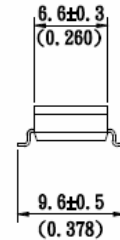
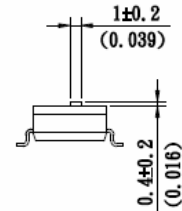
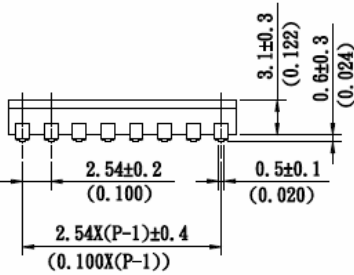
Positions	1	2	3	4	5	6	7	8	9	10	12
A	2.5 (0.098)	5.04 (0.198)	7.58 (0.298)	10.12 (0.398)	12.66 (0.498)	15.2 (0.598)	17.74 (0.698)	20.28 (0.798)	22.82 (0.898)	25.36 (0.998)	30.43 (1.198)



(E)TYPE

(L)TYPE

P. C. B. LAYOUT
(TOP VIEW)



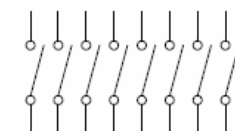
ESL SERIES

Dimension A

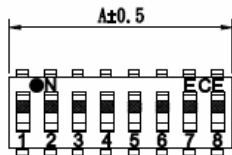
UNIT:mm(inch)

CIRCUIT DIAGRAM

Positions	1	2	3	4	5	6	7	8	9	10	12
A	2.5 (0.098)	5.04 (0.198)	7.58 (0.298)	10.12 (0.398)	12.66 (0.498)	15.2 (0.598)	17.74 (0.698)	20.28 (0.798)	22.82 (0.898)	25.36 (0.998)	30.43 (1.198)



*ESL series: 1 pole switch is unavailable



(E)TYPE

(L)TYPE

P. C. B. LAYOUT
(TOP VIEW)

