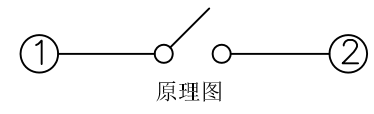
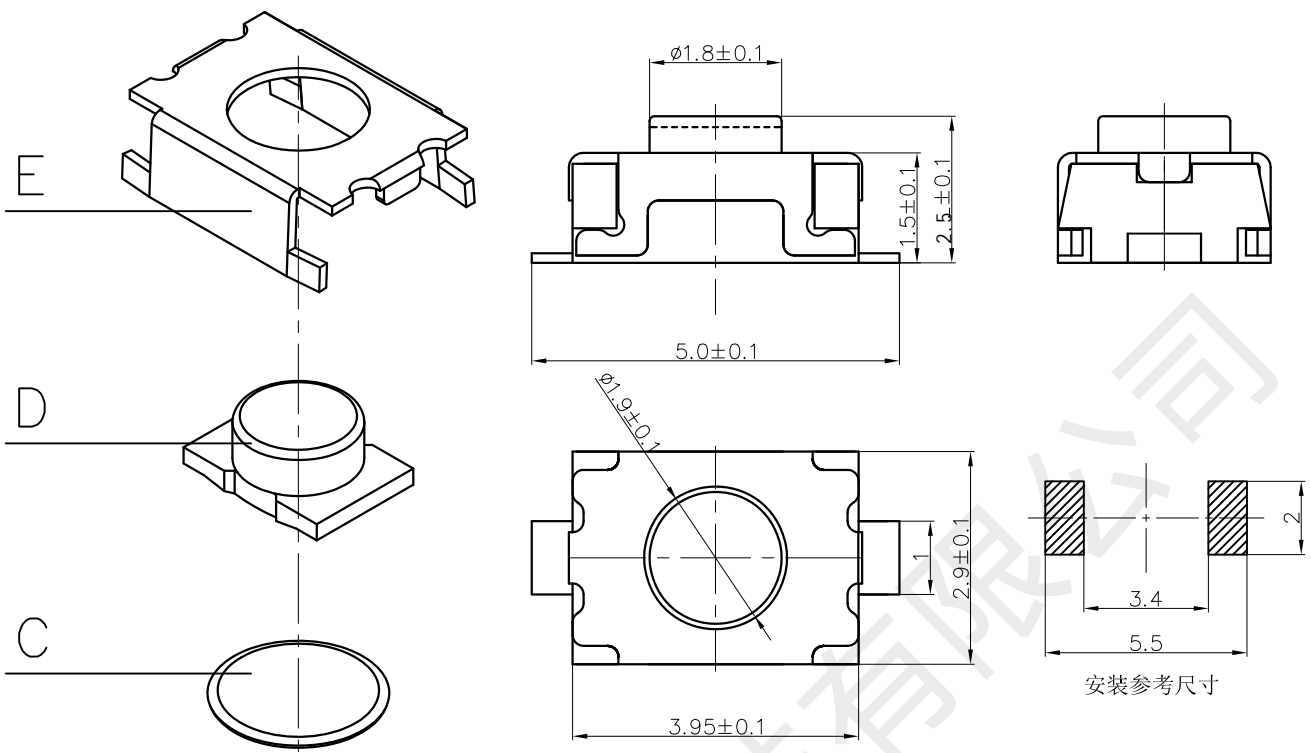


|       |               |      |           |         |
|-------|---------------|------|-----------|---------|
| RevNo | Revision note | Date | Signature | Checked |
|-------|---------------|------|-----------|---------|



技术要求:

1. 塑料件表面光洁无划伤, 水花, 变形, 影响外观及性能等缺陷。
2. 额定电流: 50mA. 12V DC, 绝缘电阻100MΩ min, 100V DC, 介电强度250V AC for 1min, 接触电阻 100MΩ max。操作温度-30° to+85°, 使用寿命 3 0000 次。操作力: 160gf±50gf。
3. 开关手感明显, 档位清晰可靠, 无卡滞现象, 消除外力后, 应能快速回位。

3D轴测图

| F  | 盖板  | CC2      | 不锈钢     | 1  | 酸洗 |
|----|-----|----------|---------|----|----|
| E  | 按钮  | BD3/BD4  | LCP 黑   | 1  |    |
| D  | 防尘膜 | CF2      | 0.05    | 1  |    |
| C  | 簧片  | CE4/CE11 | 进口不锈钢复银 | 2  |    |
| B  | 底座  | CB5/CB6  | LCP 黑   | 1  |    |
| A  | 卡件  | CA4      | 磷铜      | 1  | 镀银 |
| 序号 | 名称  | 物料号      | 材料      | 数量 | 备注 |

|     |     |       |      |    |            |                    |
|-----|-----|-------|------|----|------------|--------------------|
| 设计: | 李春风 | 角度公差  | 比例   | 洛  | 两脚小龟无柱2.0H |                    |
|     |     | ±1°   | 10:1 |    |            |                    |
|     |     | 审核:   | 钟华华  |    |            | 標尺公差               |
| 批准: | 罗孝金 | ±0.01 | mm   | 型  | 號          |                    |
|     |     | 日期    | 版本   |    |            | TS342A2P 160gf 021 |
| 標記  | 處數  | 更改文件號 | 簽字   | 日期 | 料          |                    |
|     |     |       |      |    | 號          | 外形图                |



深圳市首韩科技有限公司

SHENZHEN SHOUHAN TECHNOLOGY CO., LTD

Tel: 0755-27597601 Fax: 0755-27597491

# 承 认 书

## SPECIFICATION FOR APPROVAL

商品编码 Part Code:

\_\_\_\_\_

产品名称 Project:

轻触开关

\_\_\_\_\_

规格型号 Part No:


TS342A2P 160gf 021

\_\_\_\_\_

### 贵公司承认印 Approval signatures

| 料号/Part No. | 签章/Signatures |
|-------------|---------------|
|             |               |

日期 Date:

|             |     |  |
|-------------|-----|--|
| 拟制/Drawn    | 李春风 |  |
| 审核/Check    | 钟华华 |  |
| 批准/Approved | 罗孝金 |  |

## 产品规格书 PRODUCT SPECIFICATION

|                               |                                    |  |  |
|-------------------------------|------------------------------------|--|--|
| SIRLES                        |                                    | 系列:TACT SWITCHES(轻触开关)   |  |
| MODEL                         |                                    | 型号: TS342A2P 160gf 021   |  |
| 1.RATING                      |                                    | 额定值:50mA 12VDC   |  |
| 2.CONSTRUTION DIMENSION 结构尺寸  |                                    | Apply to the appended drawing符:合附加图纸   |  |
| 3.APEARANCE 外观                |                                    | Have no remarkable damage,crack and rust etc无:明显损伤,裂纹,锈迹等.   |  |
| 4.CONTACTLOOP 接触回路            |                                    | Monople loop:单通单极回路  |  |
| ITEM 专案                       |                                    | TEST CONDITION 测试条件  | SPECIFICATION 规格   |
| 5.CAPABILITY OF ELECTRIC 电气性能 |                                    |  |  |
| 5A                            | INSULATION RESISTANCE<br>绝缘电阻      | Measurements shall be made following Application of DC500V potential across terminals and across terminals and fuame for 1minute在,端子之间和端子与壳之间加 DC500V 条件下,持续 1 分钟测量. | 100M $\Omega$ <b>min</b><br>100 兆欧以上.  |
| 5B                            | WITHSTAND VILTAGE<br>耐电压           | AC250V、50HZ、1 <b>min</b> (imin(interrupting current) $\leq 500\mu A$ ). AC250V、50HZ、1 分钟(漏电流 500 $\mu A$ )   | There shall be no briakdown 无击穿现象出现。   |
| 5C                            | CONTACT CIRCUIT<br>接触电路            | Addition 1.5-2 time force on the top of the keystrok and press the switch,DC50V100mA在按键顶端上等于作用力 1.5-2 倍的力按动开关,DC50V,10Ma.  | 100m $\Omega$ <b>Max</b><br>(100m $\Omega$ 以下) .                                   |
| 5D                            | SWITCH CONNECTION<br>FLASH 开关接触点抖动 | Addition DC5V on the two side of switch,at a speed of 3-5time a sec.to press the switch在.开关的两端加 DC5V 的电压,以 3-5 次/秒的速度按动开关.   | The flash time betwen open not more than 10ms.<br>开关在接通和断开时的接点抖动时间不大于 10 ms.       |
| 6.MECHANICAL EFFICIENCY 机械性能  |                                    |  |  |
| 6A                            | CONTACT STRENGTH<br>按键强度           | The contact shall be capable of a rorce of 5N for 5 seconds in any directions沿.开关动作方向可承受静能压力 5N, 保持 5 秒钟.  | Switch electric andmechanical efficiency does not break 无损开关电气或者机械性能               |
| 6B                            | CONTACT JOURNEY                    |  | 按键行程:<br>0.15 $\pm$ 0.1mm  |
| 6C                            | DRIVE FORCE<br>驱动力                 | Being measure at across spring piece and across keystroke forergometer用.测力计在按键与弹片之间测量.   | Contact switch'sd drive dirive fouce was160 $\pm$ 50gf.<br>按键的开关驱动力为160 $\pm$ 50gf |

## 产 品 规 格 书 PRODUCT SPECIFICATION

-2-

|   |   |  |   |
|---|---|--|---|
| 6D  | CONNECTION STRENGTH<br>接线端强度  | A force of 1N being applying in any directions of the switch connection partt.在.接线端的作用方向施加 1N 的力.  | Switch mechanical efficiency does not break.无损开关机械性能.   |
| 6E  | MECHANICAL LIFE<br>机械寿命   | Operatin at a rate of 30-50 cycles a minute. 以 30-50 次/分的驱动速度操作.   | Life:30000cycles<br>寿命:30000次   |
| 7.ENVIRONME NT---RESISTANT EFFICIENCY 耐环境性能 |   |  |   |
| 7A  | CHANGE OF TEMPERATURE 温度变化  | The first temperature shall be 65°C ,2h and changed to-30°C, 2h, 5c ycles of above test. 先 65°C, 2h, 然后-30°C, 2h, 如此重复 3 次.  | 1. The appearance should not break.外观应无损伤.<br>2. Contact resistance $\leq 100 M \Omega$ 接触电阻 $\leq 100M \Omega$                             |
| 7B  | HUMIDITY RESISTANT 耐湿热  | 40 $\pm$ 2°C in temperature and 95%RH , Ruring thetest time without load; After testing the temperature should be 48h. 经 40 $\pm$ 2°C, 相对湿度 95%, 试验期间, 开关不动作, 不带电负荷, 试验后恢复到常温 48h. | 3. Insulation resistance $\geq 100 M \Omega$ .<br>绝缘电阻 $\geq 100M \Omega$   |
| 8.IOINTING EFFICIENCY 焊接性能                  |   |  |   |
| 8A  | SOLDERABILITY<br>可焊性  | Temperature260 $\pm$ 5°C ;Duration;3 $\pm$ 0.5S:温度在 260 $\pm$ 5°C, 持续 3 $\pm$ 0.5S.  | Solderability part should above 90% 可焊部分被焊料覆盖面应在 90% 以上.  |
| 8B  | SOLDER—RESISTANT<br>耐焊剂性  | Warm-up temperature:100°C,40S, 焊锡温度 260 $\pm$ 5°C, 浸焊时间 3 $\pm$ 0.5S.  | Froth height of assist solder should under board and switch electric and mechanical efficiency does not break.助焊剂发泡不应超过印制板, 无损伤开关电气或机械动作性能. |
| 8C  | JOINTING—RESISTANT<br>耐焊接热  | Jointing temperature: 260 $\pm$ 5°C ,Duration of immersion: 5 $\pm$ 1S. 焊锡温度 260 $\pm$ 5°C, 浸焊时间5 $\pm$ 1S   | efficiency does not break 无损伤开关电气或机械动作性能  |
| 8D  | NORMAL JOLNTING TIMES<br>正常焊接次数   |  | $\leq 2$ times 小于 2 次   |
| 9.NOTES                                     |   |  |   |
| 9A  | The whole boxes of switch should keep in the temperature -30--80°C and less than 80%RH withont acidic, alkalescence, caustic gas in the environment of the storage.<br>整箱包装的开关, 应在温度为-30--80°C, 相对湿度不大于 80%, 周围的空气中没有酸性、碱性或其他腐蚀性气体的库房内保管。 |  |   |
| 9B  | Operating Temperature Range:-25to 70°C<br>操作温度的范围: -25 to 70°C  |  |   |
| 9C  | Switch should install in a correct method.<br>开关应按正确的安装方法进行正确安装使用。  |  |   |