

**SERIES:** PCM-400 | **DESCRIPTION:** AC-DC POWER SUPPLY**FEATURES**

- up to 400 W continuous power
- universal input (90~264 Vac)
- active power factor correction
- peak power of 700W for 500 $\mu$ s duration (single output models only)
- built-in remote ON/OFF, power good, & fan fail alarm options
- over voltage, short circuit, over current, and over temperature protection
- efficiency up to 87%



| MODEL                          |     | preset<br>output<br>voltage<br><br>(Vdc) | customizable<br>output<br>range <sup>7</sup><br><br>(Vdc) | output<br>current          |                            | output<br>power<br><br>max<br>(W) | ripple<br>and noise <sup>8,9</sup><br><br>max<br>(mVp-p) | efficiency<br><br>typ<br>(%) |
|--------------------------------|-----|--|---|----------------------------|----------------------------|-----------------------------------|--|------------------------------|
|                                |     |  |   | max<br>(forced air)<br>(A) | max<br>(convection)<br>(A) |                                   |  |                              |
| PCM-400-12 <sup>1,2</sup>      |     | 12                                       | 10~13.8   | 33.33                      | 18.33                      | 400                               | 120  | 85                           |
| PCM-400-15 <sup>1,2</sup>      |     | 15                                       | 14~15.5   | 26.67                      | 14.67                      | 400                               | 150  | 85                           |
| PCM-400-18 <sup>1,2</sup>      |     | 18                                       | 16~20   | 22.22                      | 12.22                      | 400                               | 180  | 85                           |
| PCM-400-24 <sup>1,2</sup>      |     | 24                                       | 21~26   | 16.67                      | 9.17                       | 400                               | 240  | 87                           |
| PCM-400-28 <sup>1,2</sup>      |     | 28                                       | 27~34   | 14.29                      | 7.86                       | 400                               | 280  | 85                           |
| PCM-400-36 <sup>1,2</sup>      |     | 36                                       | 35~42   | 11.11                      | 6.11                       | 400                               | 360  | 87                           |
| PCM-400-48 <sup>1,2</sup>      |     | 48                                       | 43~50   | 8.33                       | 4.58                       | 400                               | 480  | 87                           |
| PCM-400-54 <sup>1,2</sup>      |     | 54                                       | 51~60   | 7.41                       | 4.07                       | 400                               | 540  | 87                           |
| PCM-400-D0512 <sup>3,4,*</sup> | Vo1 | 5  | N/A   | 30                         | 15                         | 320                               | 50   | 87                           |
|                                | Vo2 | 12                                       |   | 20.83                      | 13.33                      |                                   | 120  |                              |
| PCM-400-D0524 <sup>3,4,*</sup> | Vo1 | 5  | N/A   | 30                         | 15                         | 320                               | 50   | 87                           |
|                                | Vo2 | 24                                       |   | 10.42                      | 6.67                       |                                   | 240  |                              |
| PCM-400-D0548 <sup>3,4,*</sup> | Vo1 | 5  | N/A   | 30                         | 15                         | 320                               | 50   | 87                           |
|                                | Vo2 | 48                                       |   | 5.21                       | 3.33                       |                                   | 480  |                              |
| PCM-400-D1224 <sup>5,6</sup>   | Vo1 | 12                                       | N/A   | 20.83                      | 12.5                       | 400                               | 120  | 87                           |
|                                | Vo2 | 24                                       |   | 10.42                      | 8.33                       |                                   | 240  |                              |

- Notes:
1. For U-frame models, the maximum output power is 400W with a minimum of 27 CFM forced air, 220 W maximum with convection cooling.
  2. For CNF models, the maximum output is 220 W with convection cooling.
  3. For U-frame models, the total combined output power is 320W with a minimum of 27 CFM forced air, 180 W maximum with convection cooling.
  4. For CNF models, the maximum output is 180 W with convection cooling.
  5. For U-frame models, the total combined output power is 400W with a minimum of 27 CFM forced air, 200 W maximum with convection cooling.
  6. For CNF models, the maximum output is 200 W with convection cooling.
  7. Output can be custom set within range.
  8. Measured at 10 kHz ~ 20 MHz bandwidth, with a 22  $\mu$ F electrolytic and 0.1  $\mu$ F ceramic capacitor on the output.
  9. 1% minimum load is required to maintain ripple and regulation (10% for dual output models).
  10. \* Discontinued model.

**PART NUMBER KEY**

## INPUT

| parameter               | conditions/description   | min | typ | max | units |
|-------------------------|--|-----|-----|-----|-------|
| voltage                 |  | 90  |     | 264 | Vac   |
| frequency               |  | 47  |     | 63  | Hz    |
| current                 | at 90 Vac, full load   |     | 8   |     | A     |
| inrush current          | at 115 Vac, cold start   |     |     | 35  | A     |
|                         | at 230 Vac, cold start   |     |     | 70  | A     |
| leakage current         | at 120 Vac   |     |     | 300 | μA    |
|                         | at 240 Vac   |     |     | 500 | μA    |
| power factor correction | at 230 Vac, full load  | 0.9 |     |     |       |
| remote ON/OFF           | designated as INH on Pin 4 of CN1, requires a low signal to inhibit output |     |     |     |       |
| input fuse              | T8 A/250 V on the input  |     |     |     |       |

## OUTPUT

| parameter                  | conditions/description   | min | typ | max | units |
|----------------------------|--|-----|-----|-----|-------|
| total regulation           | single output models   |     | ±1  |     | %     |
|                            | dual output models   |     | ±5  |     | %     |
| transient response         | returns to within 1% in <2.5 ms for a 50% load change and the peak transient does not exceed 5%  |     |     |     |       |
| start-up time              | at 120 Vac   |     |     | 1.5 | s     |
| hold-up time               | at 120 Vac, 75% load   | 16  |     |     | ms    |
| adjustability <sup>1</sup> | built in trim pot  |     | ±5  |     | %     |
|                            | PFC  |     | 68  |     | kHz   |
| switching frequency        | PWM  |     | 55  |     | kHz   |
|                            | all single output models & PCM-400-D1224<br>all other dual output models   |     | 50  |     | kHz   |
| fan drive                  | 12 Vdc/300 mA for external fan   |     |     |     |       |
| fan fail (FF)              | Designated as FF on Pin 3 of CN1, open collector output rated for 15Vdc/5mA max sink current. It goes high when a fan failure is detected. |     |     |     |       |
| power good (PG)            | Designated as PG on CN1, TTL high 100~500 ms after DC regulation. It goes low at least 1 ms before loss of regulation.                     |     |     |     |       |
| power supply on            | green LED designated as LED1 on the PCB  |     |     |     |       |

Note: 1. U-Frame versions only

## PROTECTIONS

| parameter                   | conditions/description                         | min | typ | max | units |
|-----------------------------|--|-----|-----|-----|-------|
| short circuit protection    | auto restart                                   |     |     |     |       |
| over current protection     | auto restart                                   | 110 |     | 140 | %     |
| over voltage protection     | output latches, must recycle ac input to reset |     | 130 |     | %     |
| over temperature protection | auto restart                                   | 105 | 110 | 115 | °C    |

## SAFETY & COMPLIANCE

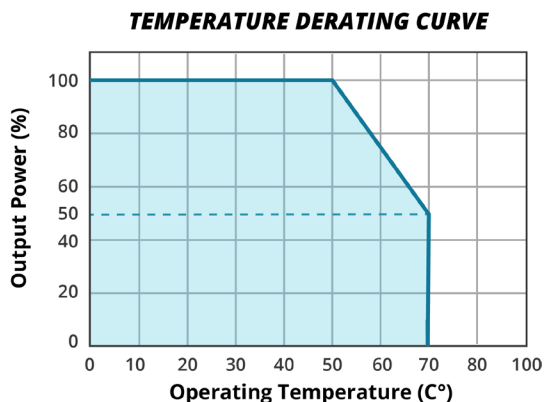
| parameter            | conditions/description   | min     | typ | max | units |
|----------------------|--|---------|-----|-----|-------|
| isolation voltage    | input to output, for 3 sec.  | 3,000   |     |     | Vac   |
|                      | input to core, for 3 sec.  | 1,500   |     |     | Vac   |
|                      | input to chassis (10 mA AC cut-off current), for 3 sec.  | 1,500   |     |     | Vac   |
| safety approvals     | UL/cUL, TUV  |         |     |     |       |
| safety standards     | 62368: IEC, EN, UL   |         |     |     |       |
| EMI/EMC <sup>2</sup> | EN 55022 Class B (conducted/radiated), EN 61000-3-(2,3), EN 55024, IEC 61000-4-(2, 3, 4, 5, 6, 11), CE |         |     |     |       |
| MTBF                 | as per MIL-HDBK-217F at 30°C   | 100,000 |     |     | hrs   |
| RoHS                 | 2011/65/EU   |         |     |     |       |

Note: 2. The power supply is considered a component which will be installed into a final equipment. The final equipment must be re-confirmed that it still meets EMC directives.

## ENVIRONMENTAL

| parameter             | conditions/description                 | min | typ   | max | units |
|-----------------------|--|-----|-------|-----|-------|
| operating temperature | see derating curve                     | 0   |       | 70  | °C    |
| storage temperature   |  | -20 |       | 85  | °C    |
| operating humidity    | non-condensing                         | 5   |       | 90  | %     |
| storage humidity      | non-condensing                         | 5   |       | 95  | %     |
| vibration             | at 5~50 Hz, along the X, Y, and Z axis |     | ±0.75 |     | G     |

## DERATING CURVE



## MECHANICAL

| parameter  | conditions/description                  | min | typ | max | units |
|------------|---|-----|-----|-----|-------|
| dimensions | U-frame models: 152.40 x 101.60 x 38.10 |     |     |     | mm    |
|            | CNF models: 152.40 x 101.60 x 39.90     |     |     |     | mm    |
|            | CF models: 152.40 x 101.60 x 54.45      |     |     |     | mm    |
|            | CFS models: 177.80 x 101.60 x 40.64     |     |     |     | mm    |
| weight     | U-frame models                          |     | 600 |     | g     |
|            | CNF models                              |     | 650 |     | g     |
|            | CF models                               |     | 800 |     | g     |
|            | CFS models                              |     | 750 |     | g     |

## MECHANICAL DRAWING - SINGLE OUTPUT MODELS

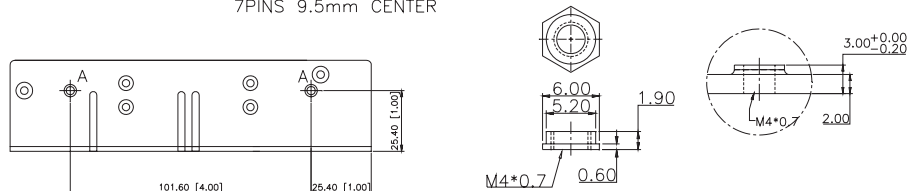
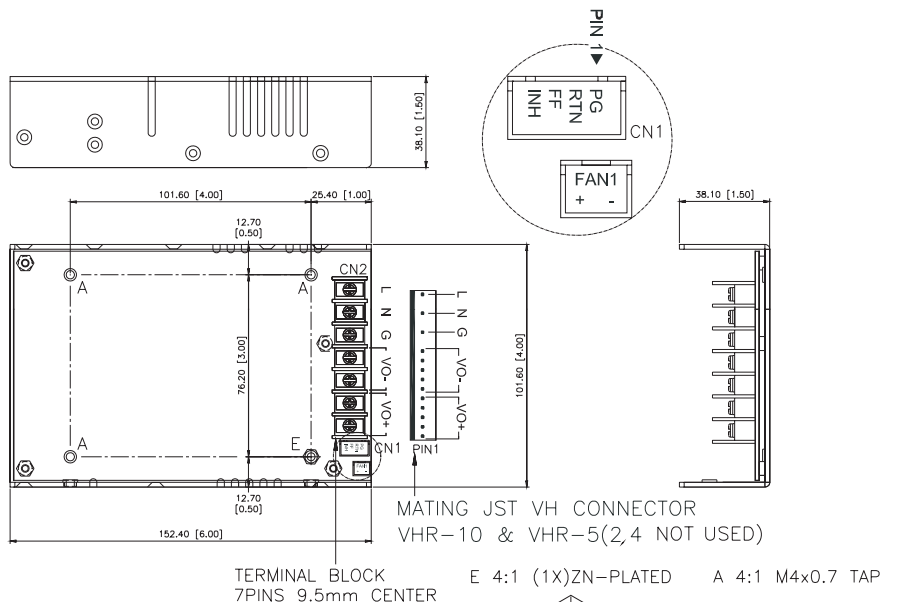
### U-FRAME

units: mm[inch]

| CN1 |          |
|-----|----------|
| PIN | Function |
| 1   | PG       |
| 2   | RTN      |
| 3   | FF       |
| 4   | INH      |

| CN2            |          |        |          |
|----------------|----------|--------|----------|
| Terminal Block |          | Header |          |
| PIN            | Function | PIN    | Function |
| 1~2            | +Vo      | 1~5    | +Vo      |
| 3~4            | -Vo      | 6~10   | -Vo      |
| 5              | GND      | 12     | GND      |
| 6              | N        | 14     | N        |
| 7              | L        | 16     | L        |

| Fan1 |          |
|------|----------|
| PIN  | Function |
| 1    | +FAN     |
| 2    | -FAN     |



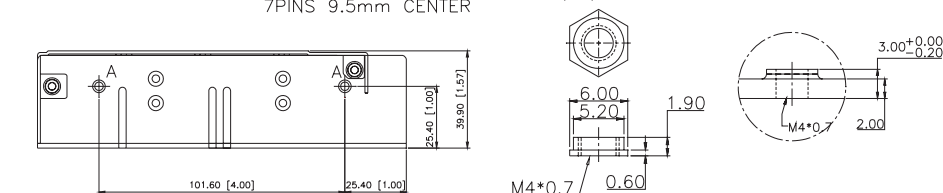
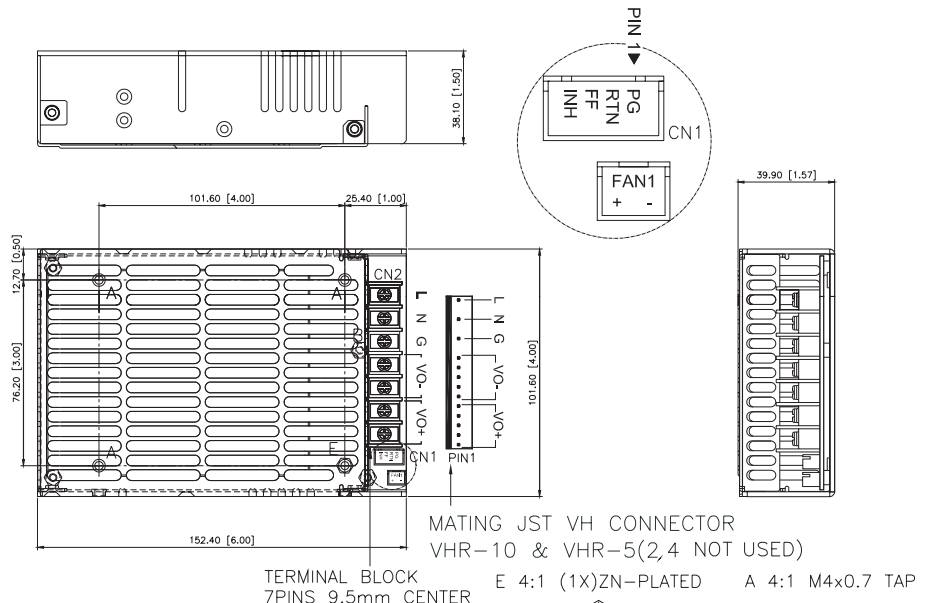
### CNF

units: mm[inch]

| CN1 |          |
|-----|----------|
| PIN | Function |
| 1   | PG       |
| 2   | RTN      |
| 3   | FF       |
| 4   | INH      |

| CN2            |          |        |          |
|----------------|----------|--------|----------|
| Terminal Block |          | Header |          |
| PIN            | Function | PIN    | Function |
| 1~2            | +Vo      | 1~5    | +Vo      |
| 3~4            | -Vo      | 6~10   | -Vo      |
| 5              | GND      | 12     | GND      |
| 6              | N        | 14     | N        |
| 7              | L        | 16     | L        |

| Fan1 |          |
|------|----------|
| PIN  | Function |
| 1    | +FAN     |
| 2    | -FAN     |



- Notes:
1. CN1 mates with JST XHP-4 or equivalent (CHYAO SHIUNN JS-2001-04) and JST SXH-002T-P0.6 mating pins (30~26 AWG).
  2. CN2: Terminal Block option is Howder Part No. HD-121-7P. Header option mates with JST VHR-5 (input) and VHR-10 (output).
  3. Fan drive connector (Fan1) mates with JST Part No. XHP-2 or equivalent (CHYAO SHIUNN JS-2001-02).
  4. Mounting hole max screw depth is 2.0mm (M4x0.7 Inserts).

## MECHANICAL DRAWING - SINGLE OUTPUT MODELS (CONTINUED)

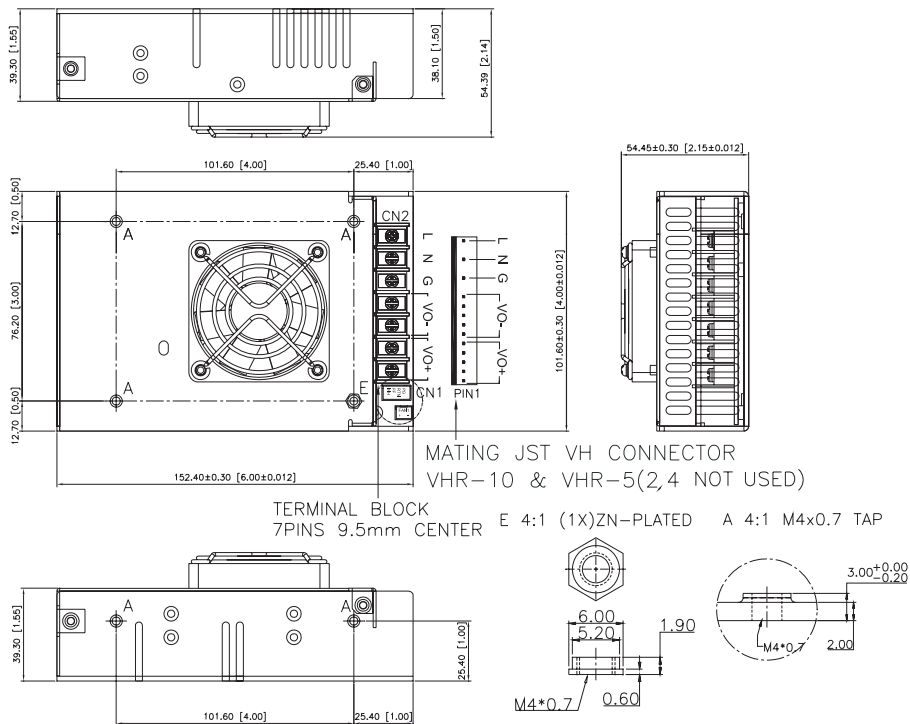
### CF

units: mm[inch]

| CN1 |          |
|-----|----------|
| PIN | Function |
| 1   | PG       |
| 2   | RTN      |
| 3   | FF       |
| 4   | INH      |

| CN2            |          |        |          |
|----------------|----------|--------|----------|
| Terminal Block |          | Header |          |
| PIN            | Function | PIN    | Function |
| 1~2            | +Vo      | 1~5    | +Vo      |
| 3~4            | -Vo      | 6~10   | -Vo      |
| 5              | GND      | 12     | GND      |
| 6              | N        | 14     | N        |
| 7              | L        | 16     | L        |

| Fan1 |          |
|------|----------|
| PIN  | Function |
| 1    | +FAN     |
| 2    | -FAN     |



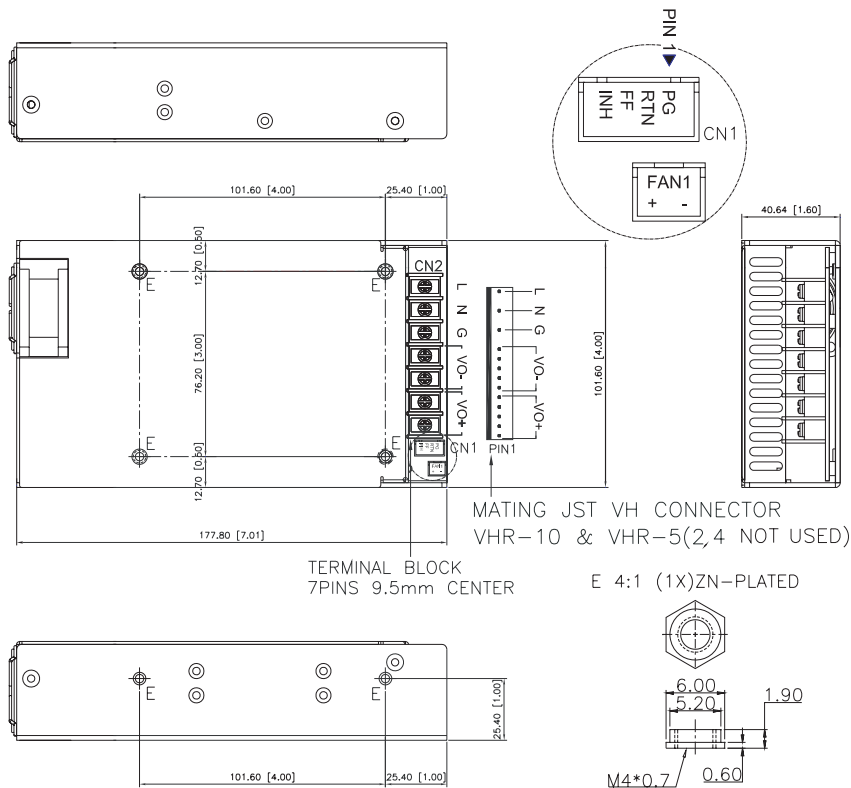
### CFS

units: mm[inch]

| CN1 |          |
|-----|----------|
| PIN | Function |
| 1   | PG       |
| 2   | RTN      |
| 3   | FF       |
| 4   | INH      |

| CN2            |          |        |          |
|----------------|----------|--------|----------|
| Terminal Block |          | Header |          |
| PIN            | Function | PIN    | Function |
| 1~2            | +Vo      | 1~5    | +Vo      |
| 3~4            | -Vo      | 6~10   | -Vo      |
| 5              | GND      | 12     | GND      |
| 6              | N        | 14     | N        |
| 7              | L        | 16     | L        |

| Fan1 |          |
|------|----------|
| PIN  | Function |
| 1    | +FAN     |
| 2    | -FAN     |



- Notes:
1. CN1 mates with JST XHP-4 or equivalent (CHYAO SHIUNN JS-2001-04) and JST SXH-002T-P0.6 mating pins (30~26 AWG).
  2. CN2: Terminal Block option is Howder Part No. HD-121-7P. Header option mates with JST VHR-5 (input) and VHR-10 (output).
  3. Fan drive connector (Fan1) mates with JST Part No. XHP-2 or equivalent (CHYAO SHIUNN JS-2001-02).
  4. Mounting hole max screw depth is 2.0mm (M4x0.7 Inserts).

## MECHANICAL DRAWING - DUAL OUTPUT MODELS

### U-FRAME

units: mm[inch]

| CN1 |          |
|-----|----------|
| PIN | Function |
| 1   | PG       |
| 2   | RTN      |
| 3   | FF       |
| 4   | INH      |

| CN2            |          |        |          |
|----------------|----------|--------|----------|
| Terminal Block |          | Header |          |
| PIN            | Function | PIN    | Function |
| 1              | +Vo1     | 1~3    | +Vo1     |
| 2~3            | RTN      | 4~8    | RTN      |
| 4              | +Vo2     | 9~10   | +Vo2     |
| 5              | GND      | 12     | GND      |
| 6              | N        | 14     | N        |
| 7              | L        | 16     | L        |

| Fan1 |          |
|------|----------|
| PIN  | Function |
| 1    | +FAN     |
| 2    | -FAN     |



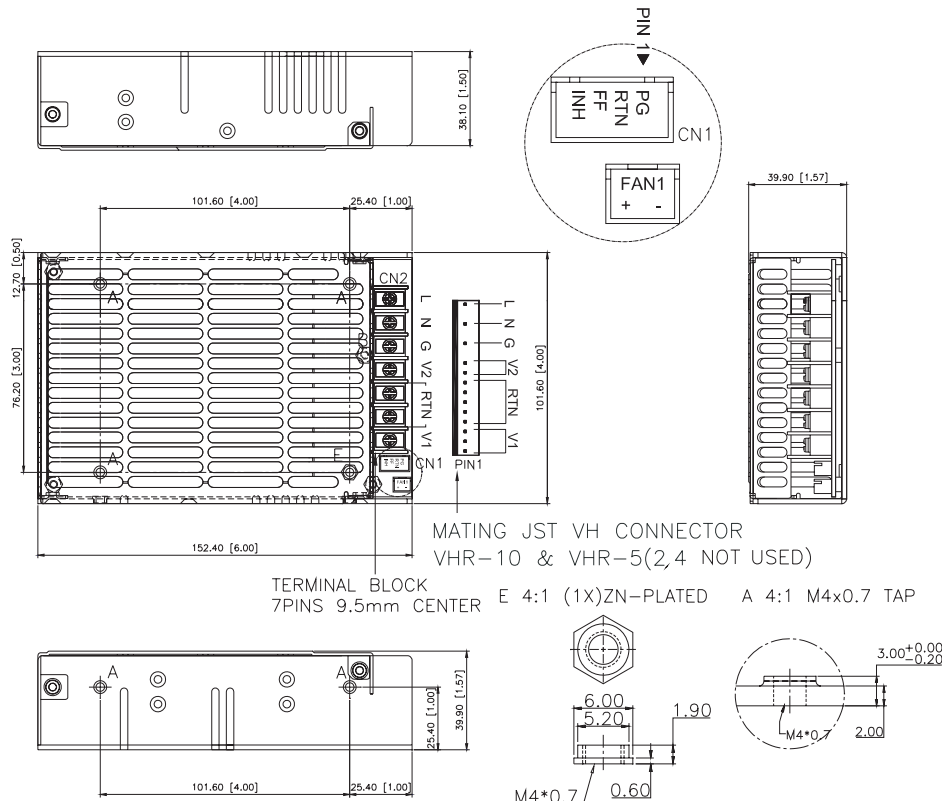
### CNF

units: mm[inch]

| CN1 |          |
|-----|----------|
| PIN | Function |
| 1   | PG       |
| 2   | RTN      |
| 3   | FF       |
| 4   | INH      |

| CN2            |          |        |          |
|----------------|----------|--------|----------|
| Terminal Block |          | Header |          |
| PIN            | Function | PIN    | Function |
| 1              | +Vo1     | 1~3    | +Vo1     |
| 2~3            | RTN      | 4~8    | RTN      |
| 4              | +Vo2     | 9~10   | +Vo2     |
| 5              | GND      | 12     | GND      |
| 6              | N        | 14     | N        |
| 7              | L        | 16     | L        |

| Fan1 |          |
|------|----------|
| PIN  | Function |
| 1    | +FAN     |
| 2    | -FAN     |



- Notes:
1. CN1 mates with JST XHP-4 or equivalent (CHYAO SHIUNN JS-2001-04) and JST SXH-002T-P0.6 mating pins (30~26 AWG).
  2. CN2: Terminal Block option is Howder Part No. HD-121-7P. Header option mates with JST VHR-5 (input) and VHR-10 (output).
  3. Fan drive connector (Fan1) mates with JST Part No. XHP-2 or equivalent (CHYAO SHIUNN JS-2001-02).
  4. Mounting hole max screw depth is 2.0mm (M4x0.7 Inserts).

## MECHANICAL DRAWING - DUAL OUTPUT MODELS (CONTINUED)

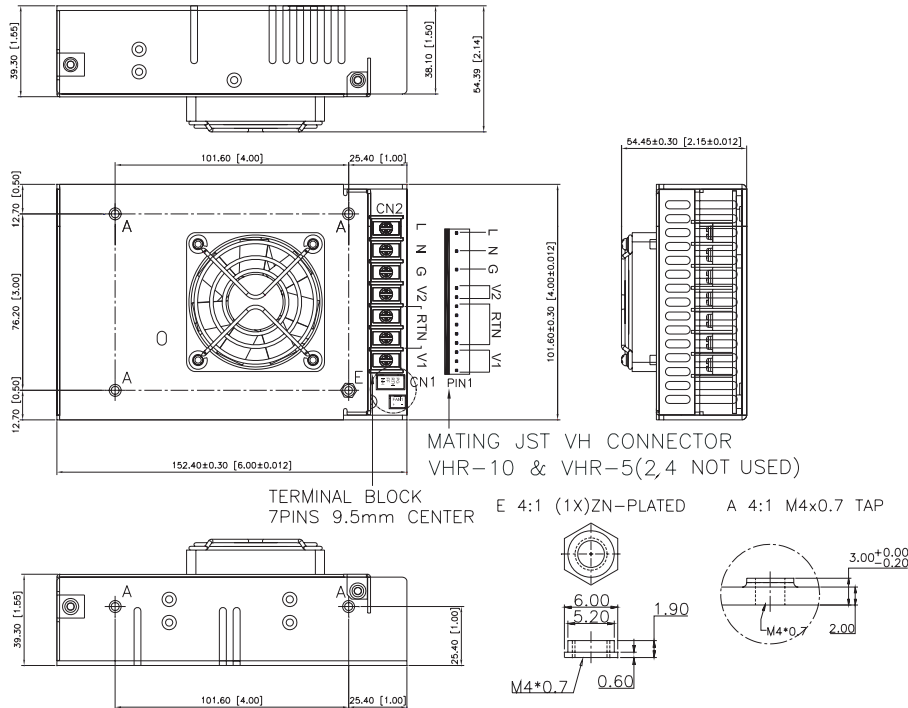
### CF

units: mm[inch]

| CN1 |          |
|-----|----------|
| PIN | Function |
| 1   | PG       |
| 2   | RTN      |
| 3   | FF       |
| 4   | INH      |

| CN2            |          |        |          |
|----------------|----------|--------|----------|
| Terminal Block |          | Header |          |
| PIN            | Function | PIN    | Function |
| 1              | +Vo1     | 1~3    | +Vo1     |
| 2~3            | RTN      | 4~8    | RTN      |
| 4              | +Vo2     | 9~10   | +Vo2     |
| 5              | GND      | 12     | GND      |
| 6              | N        | 14     | N        |
| 7              | L        | 16     | L        |

| Fan1 |          |
|------|----------|
| PIN  | Function |
| 1    | +FAN     |
| 2    | -FAN     |



### CFS

units: mm[inch]

| CN1 |          |
|-----|----------|
| PIN | Function |
| 1   | PG       |
| 2   | RTN      |
| 3   | FF       |
| 4   | INH      |

| CN2            |          |        |          |
|----------------|----------|--------|----------|
| Terminal Block |          | Header |          |
| PIN            | Function | PIN    | Function |
| 1              | +Vo1     | 1~3    | +Vo1     |
| 2~3            | RTN      | 4~8    | RTN      |
| 4              | +Vo2     | 9~10   | +Vo2     |
| 5              | GND      | 12     | GND      |
| 6              | N        | 14     | N        |
| 7              | L        | 16     | L        |

| Fan1 |          |
|------|----------|
| PIN  | Function |
| 1    | +FAN     |
| 2    | -FAN     |



- Notes:
1. CN1 mates with JST XHP-4 or equivalent (CHYAO SHIUNN JS-2001-04) and JST SXH-002T-P0.6 mating pins (30~26 AWG).
  2. CN2: Terminal Block option is Howder Part No. HD-121-7P. Header option mates with JST VHR-5 (input) and VHR-10 (output).
  3. Fan drive connector (Fan1) mates with JST Part No. XHP-2 or equivalent (CHYAO SHIUNN JS-2001-02).
  4. Mounting hole max screw depth is 2.0mm (M4x0.7 Inserts).

## REVISION HISTORY

| rev. | description                                      | date       |
|------|--|------------|
| 1.0  | initial release                                  | 07/16/2014 |
| 1.01 | updated datasheet                                | 12/02/2014 |
| 1.02 | company logo updated                             | 02/05/2021 |
| 1.03 | derating curve updated                           | 04/21/2021 |
| 1.04 | safeties updated                                 | 08/27/2021 |
| 1.05 | discontinued model PCM-400-D0548                 | 01/10/2022 |
| 1.06 | discontinued model PCM-400-D0512 & PCM-400-D0524 | 06/02/2022 |

The revision history provided is for informational purposes only and is believed to be accurate.



# CUI INC

a bel group

**Headquarters**  
20050 SW 112th Ave.  
Tualatin, OR 97062  
**800.275.4899**

Fax 503.612.2383  
**cui.com**  
techsupport@cui.com

CUI offers a two (2) year limited warranty. Complete warranty information is listed on our website.

CUI reserves the right to make changes to the product at any time without notice. Information provided by CUI is believed to be accurate and reliable. However, no responsibility is assumed by CUI for its use, nor for any infringements of patents or other rights of third parties which may result from its use.

CUI products are not authorized or warranted for use as critical components in equipment that requires an extremely high level of reliability. A critical component is any component of a life support device or system whose failure to perform can be reasonably expected to cause the failure of the life support device or system, or to affect its safety or effectiveness.