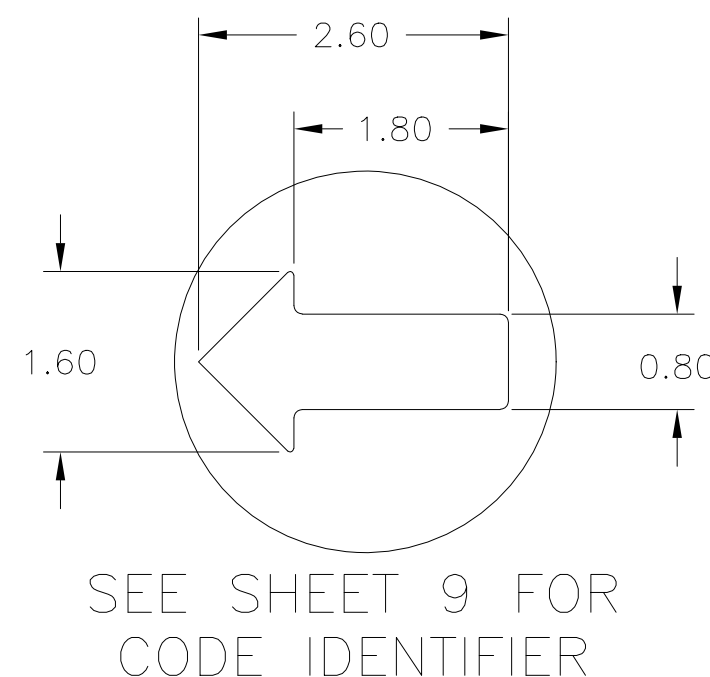
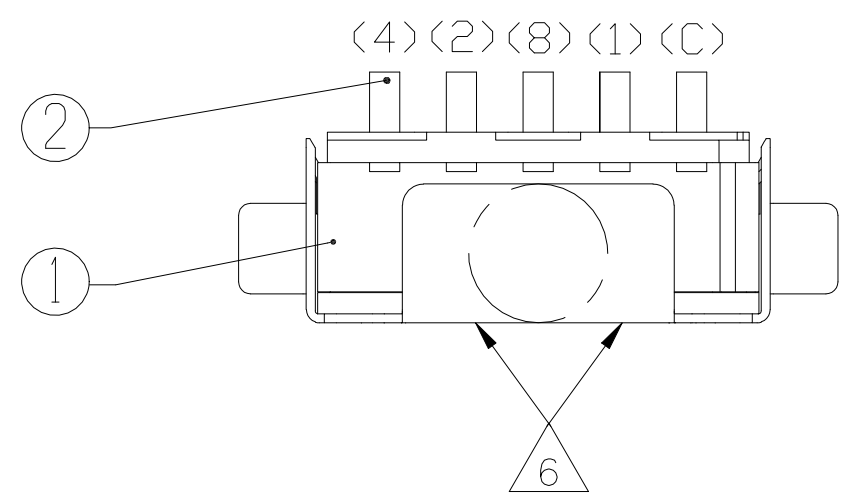
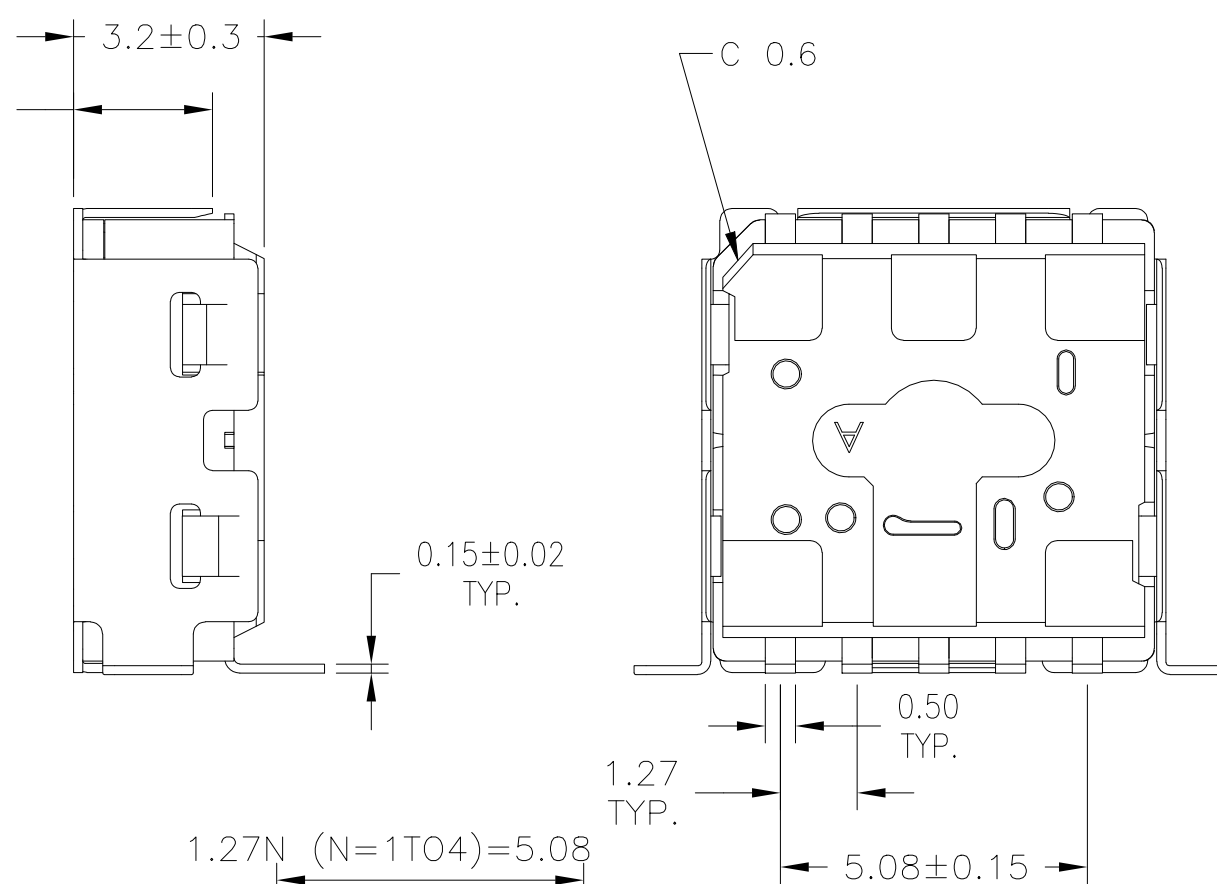
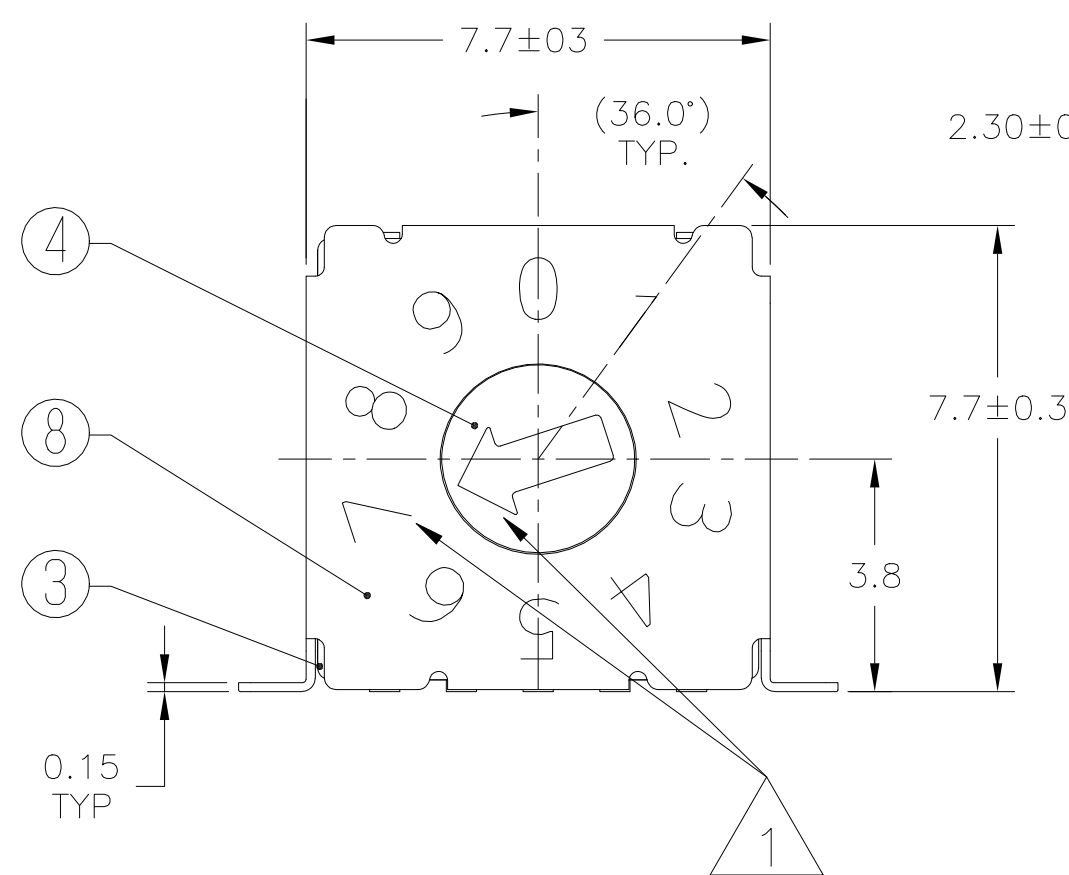


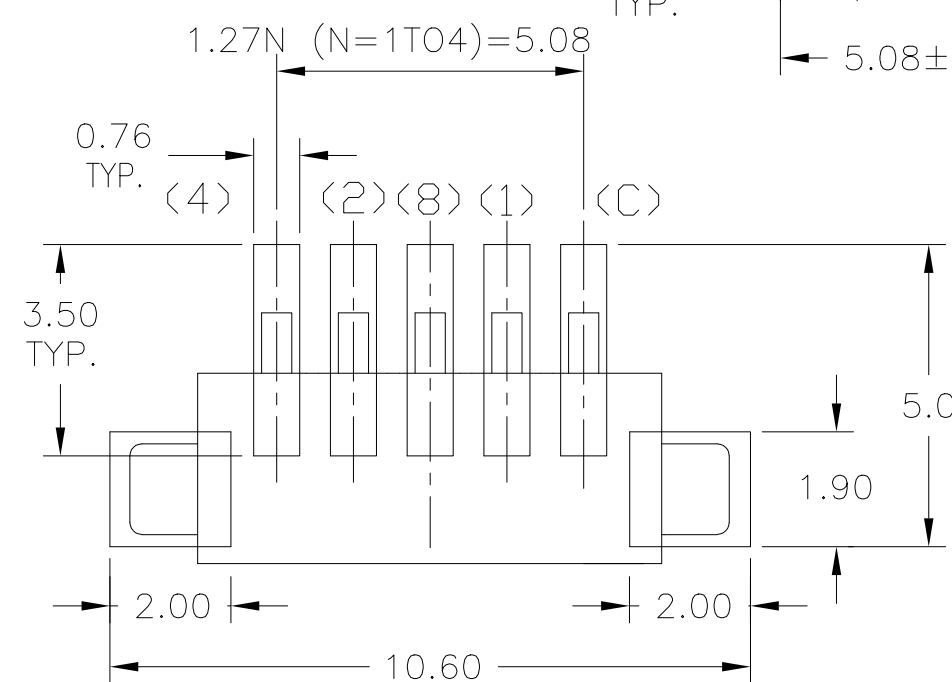
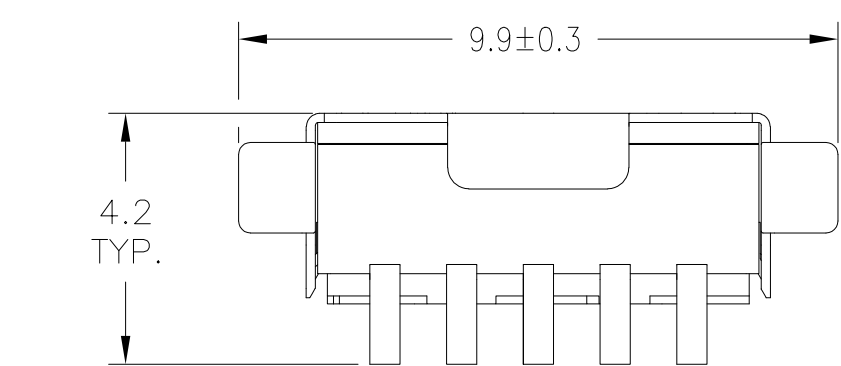
REVISIONS				
P	LTR	DESCRIPTION	DATE	APVD
1		NEW DRAWING	19JUL2022	GSK AS



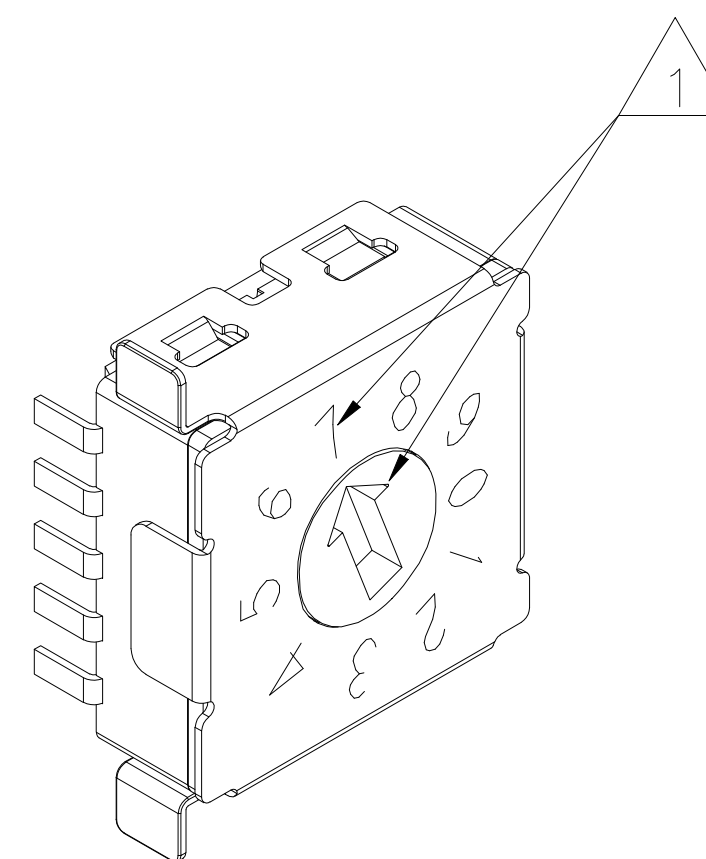
SEE SHEET 9 FOR CODE IDENTIFIER



CODE BINARY
 (COMPLEMENT/GRAY/REAL)
 GULLWING TERMINALS
 BRACKET STAINLESS STEEL
 LASER MARKING
 10 POSITION



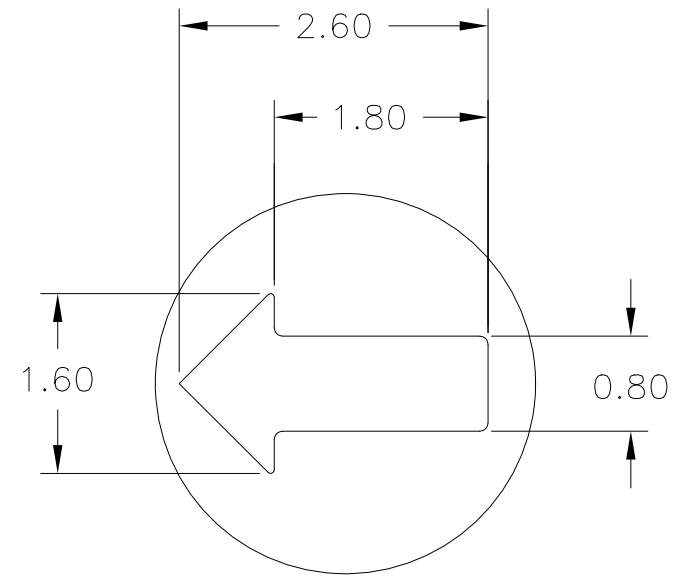
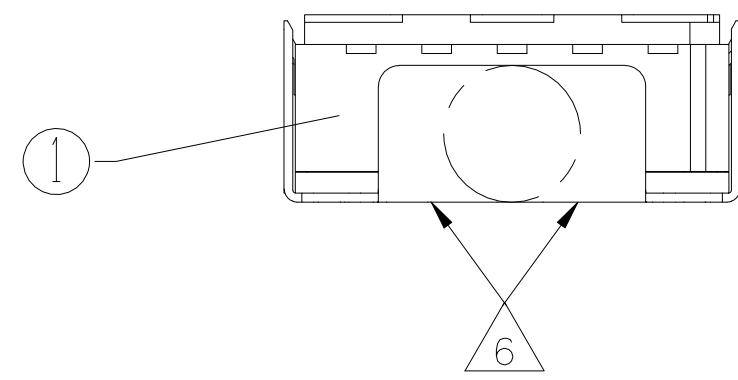
PCB Layout



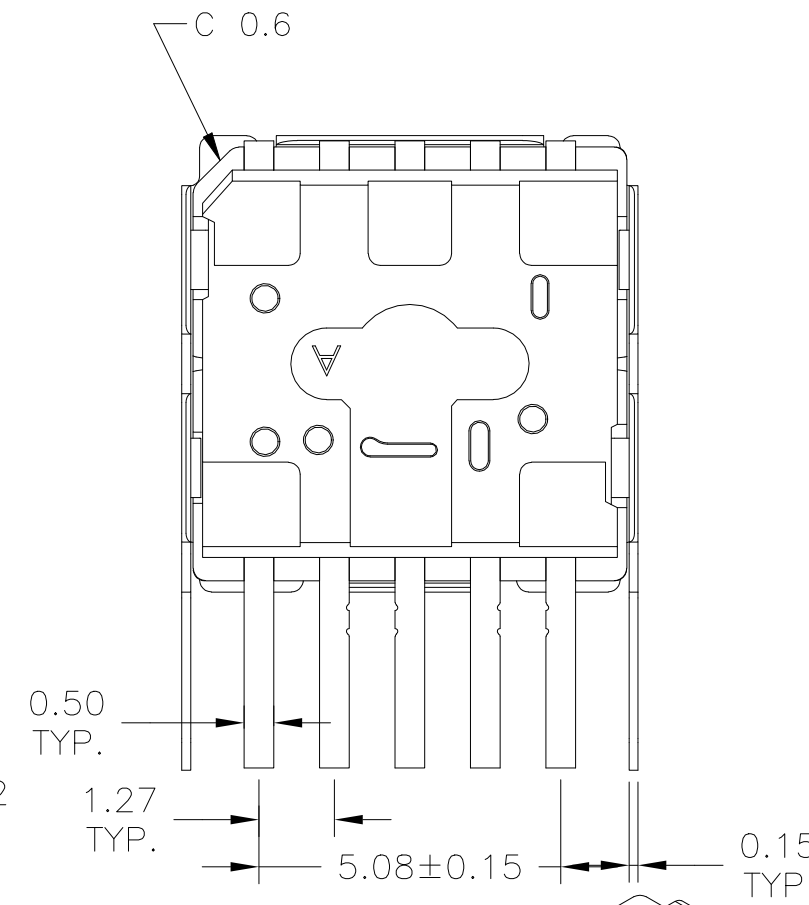
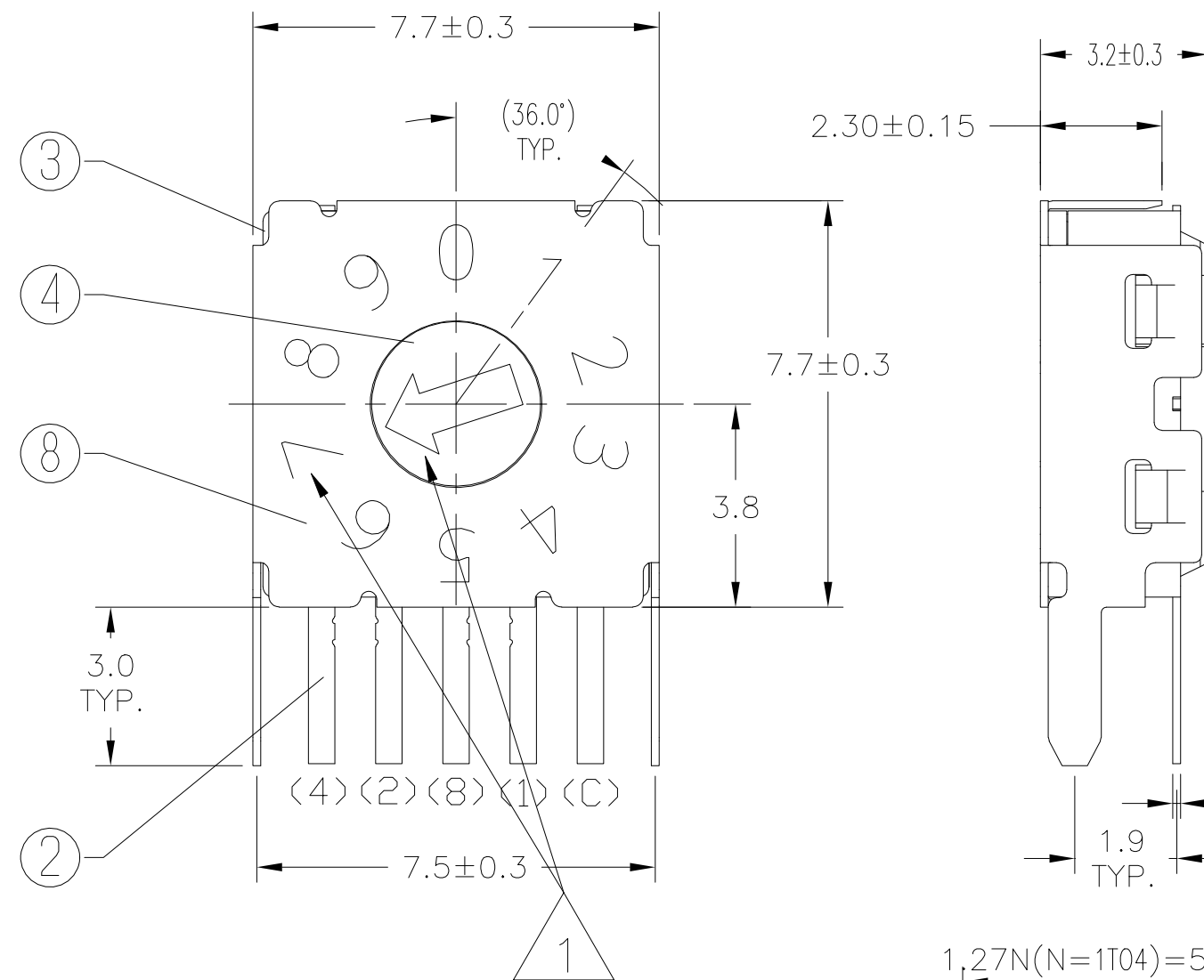
PRELIMINARY

THIS DRAWING IS A CONTROLLED DOCUMENT.		DWN 09AUG2021 SATHISH KUMAR_G		
DIMENSIONS: mm		CHK 09AUG2021 ALEXANDER, SHARPE		
TOLERANCES UNLESS OTHERWISE SPECIFIED: ±0.15		APVD 09AUG2021 ALEXANDER, SHARPE	NAME MRSS, MINIATURE ROTARY SWITCH SERIES, HORIZONTAL, 1.27, S, STEEL, LASER MARKING	
MATERIAL		PRODUCT SPEC	APPLICATION SPEC	
FINISH		WEIGHT	SIZE A2	CAGE CODE 00779
		CUSTOMER DRAWING	DRAWING NO. C=2396236	RESTRICTED TO
		SCALE NTS	SHEET 1 of 9	REV 1

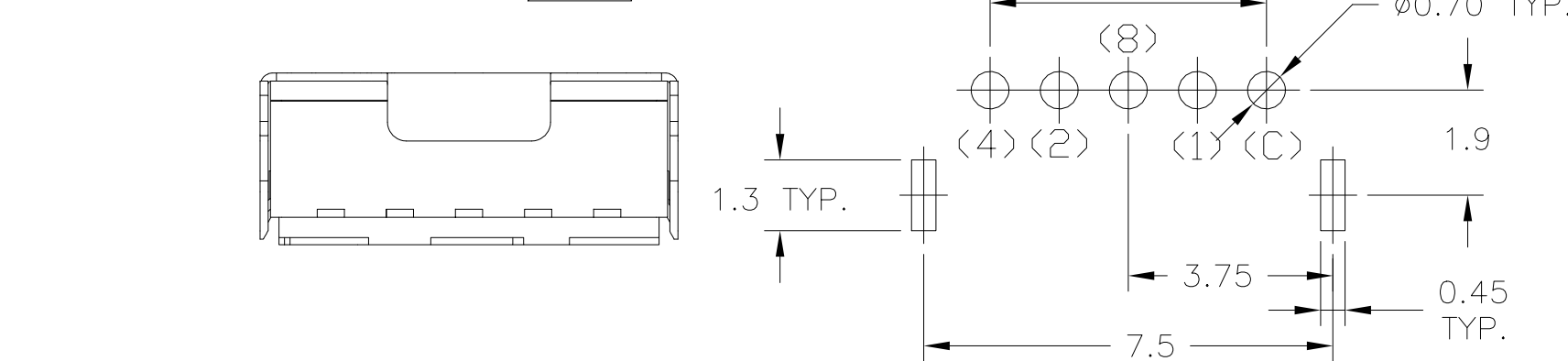
REVISIONS					
P	LTR	DESCRIPTION	DATE	DWN	APVD
-	-	SEE SHEET 1	-	-	-



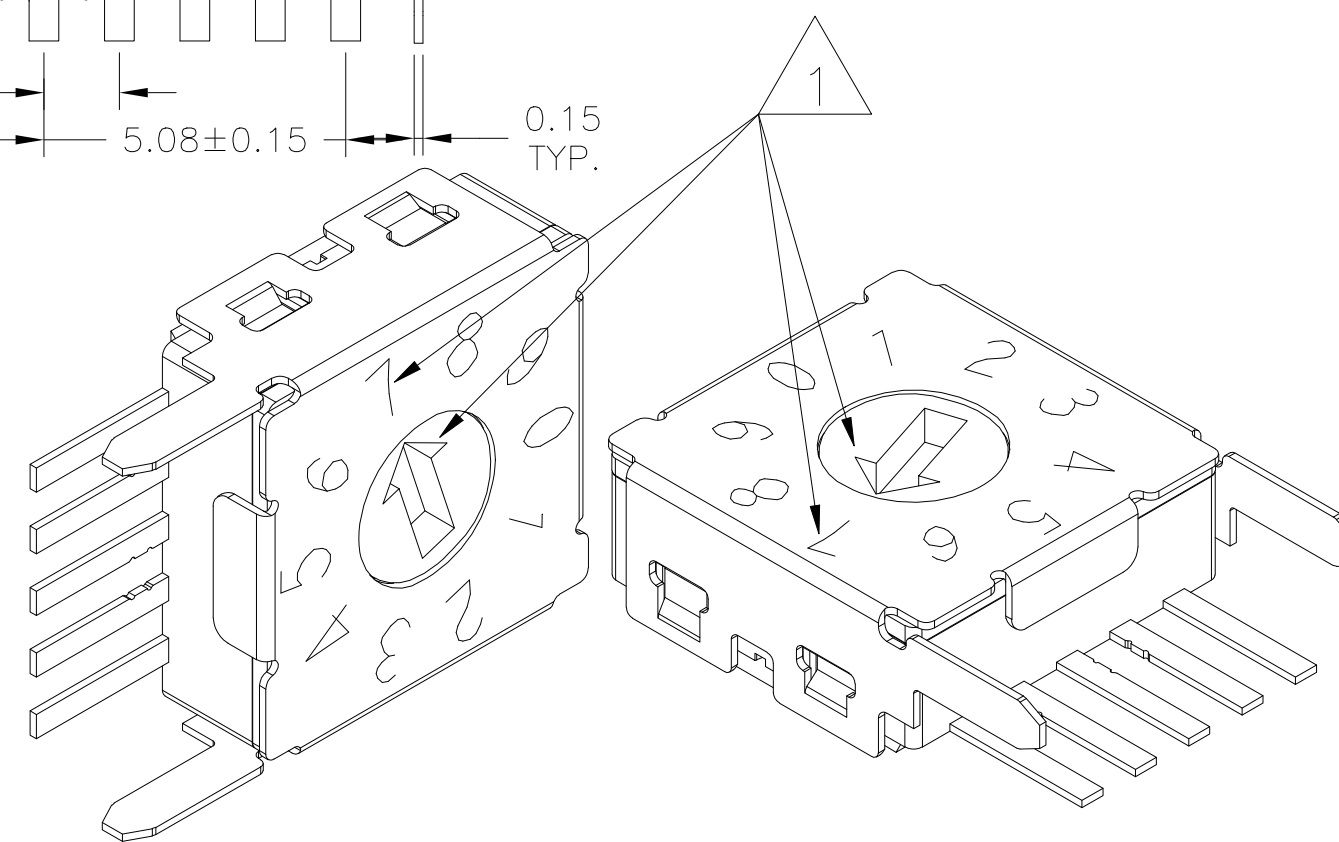
SEE SHEET 9 FOR CODE IDENTIFIER



CODE BINARY
 (COMPLEMENT/GRAY/REAL)
 THROUGH-HOLE TERMINALS
 BRACKET STAINLESS STEEL
 LASER MARKING
 10 POSITION



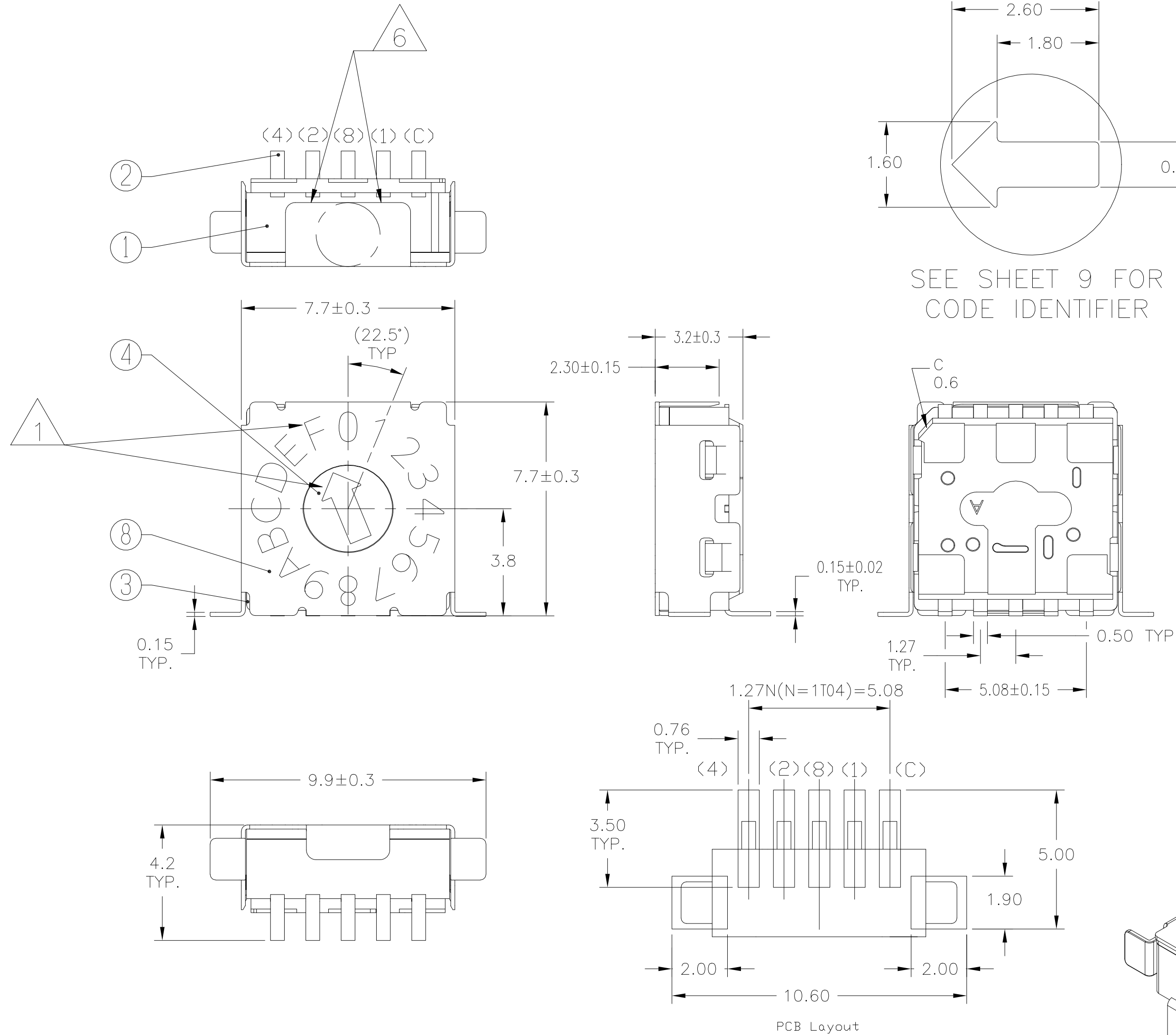
PCB Layout



PRELIMINARY

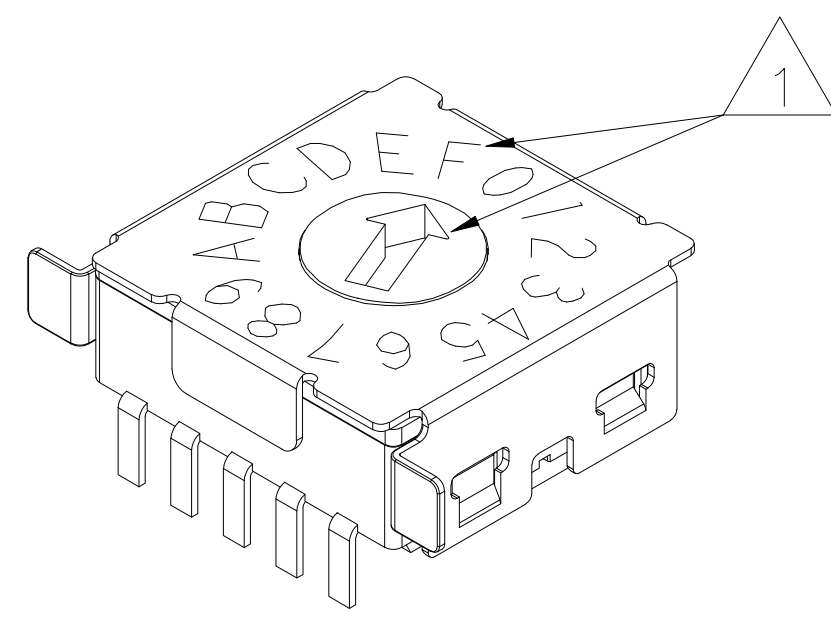
THIS DRAWING IS A CONTROLLED DOCUMENT.		DWN SATHISH KUMAR_G 09AUG2021	TE Connectivity	
DIMENSIONS: mm		CHK ALEXANDER, SHARPE 09AUG2021		
TOLERANCES UNLESS OTHERWISE SPECIFIED: ±0.15		APVD ALEXANDER, SHARPE 09AUG2021	NAME MRSS, MINIATURE ROTARY SWITCH SERIES,HORIZONTAL,1.27, S,STEEL, LASER MARKING	
		PRODUCT SPEC	APPLICATION SPEC	
MATERIAL		FINISH	WEIGHT	RESTRICTED TO
-		-	-	SIZE A2
-		-	-	CAGE CODE 00779
-		-	-	DRAWING NO C=2396236
-		-	-	SCALE NTS
-		-	-	SHEET 2 of 9
-		-	-	REV 1

REVISIONS					
P	LTR	DESCRIPTION	DATE	DWN	APVD
-	-	SEE SHEET 1	-	-	-



SEE SHEET 9 FOR CODE IDENTIFIER

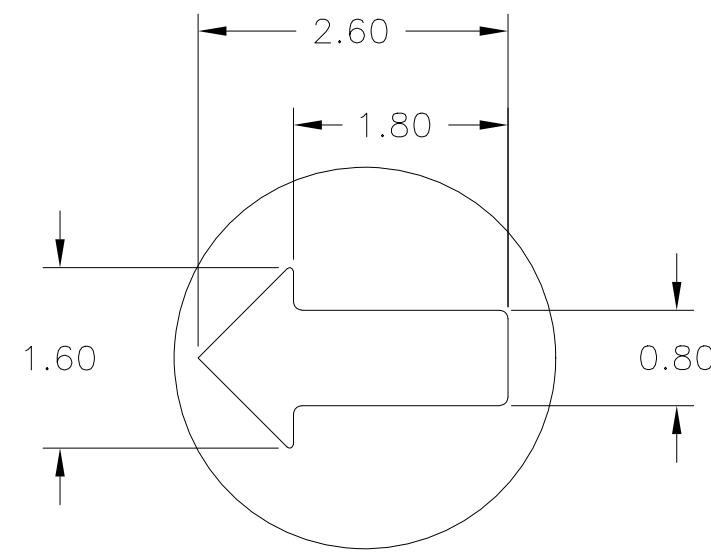
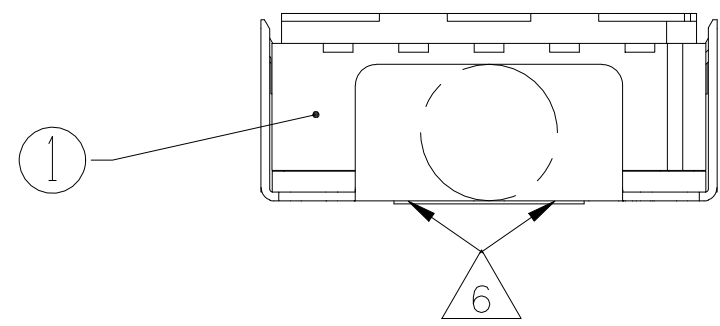
CODE HEXADECIMAL
(COMPLEMENT/GRAY/REAL)
GULLWING TERMINALS
BRACKET STAINLESS STEEL
LASER MARKING
16 POSITION



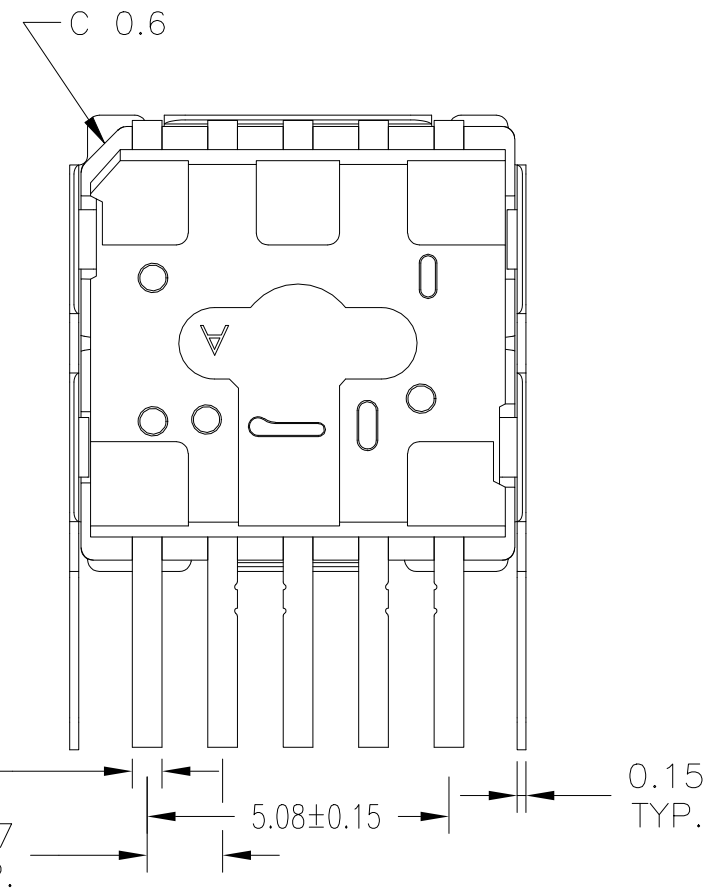
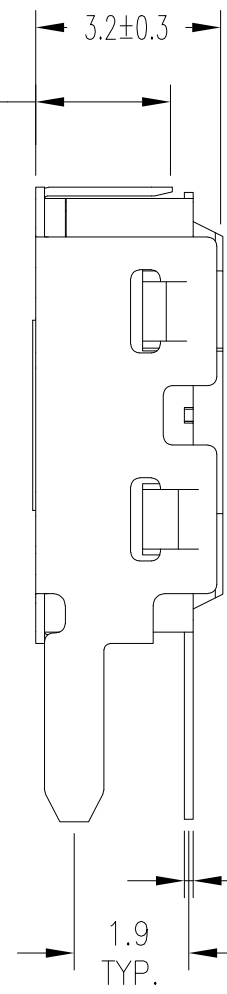
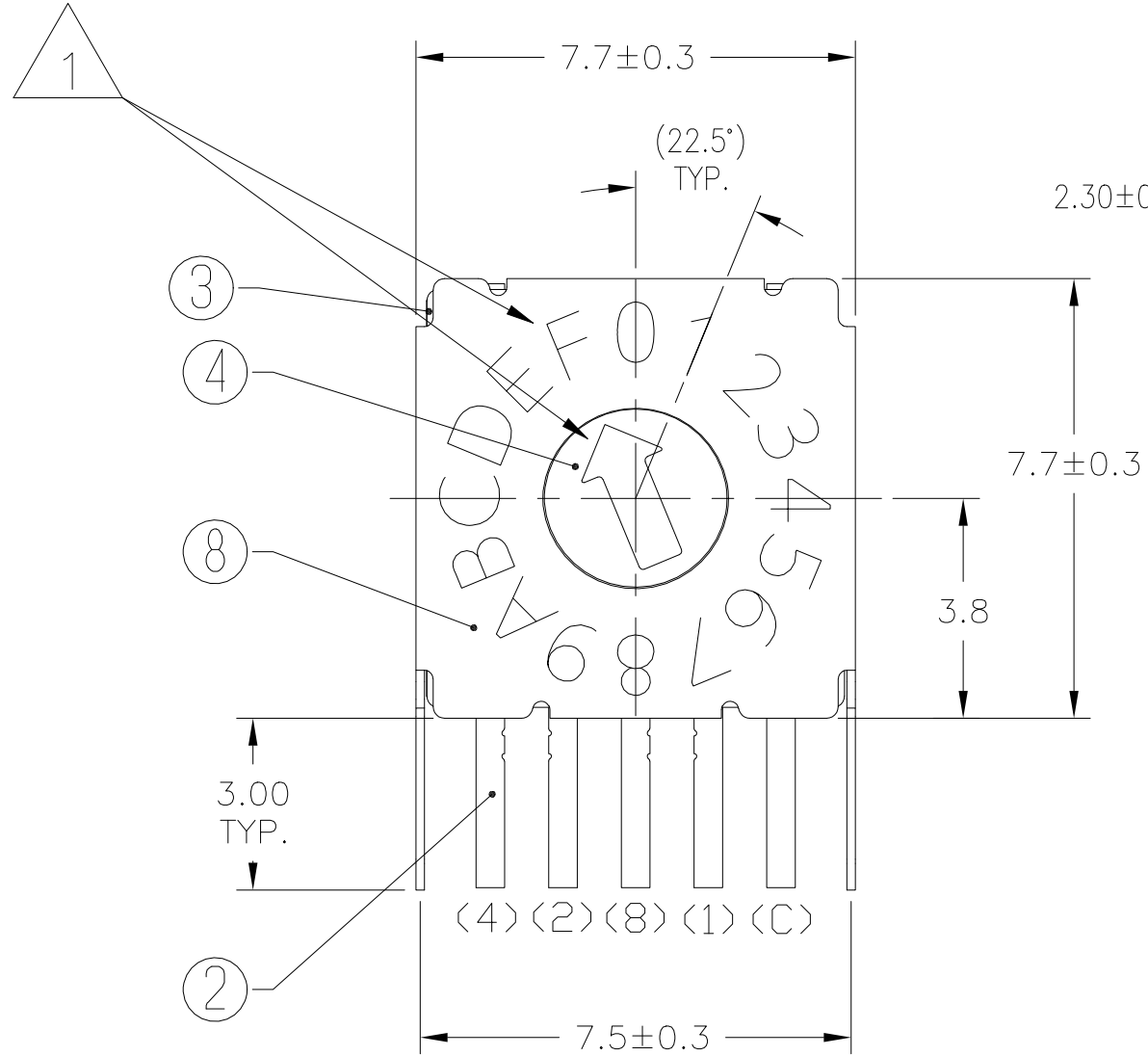
PRELIMINARY

THIS DRAWING IS A CONTROLLED DOCUMENT.		DWN SATHISH KUMAR G 09AUG2021		
DIMENSIONS: mm		CHK ALEXANDER, SHARPE 09AUG2021		
TOLERANCES UNLESS OTHERWISE SPECIFIED: ±0.15		APVD ALEXANDER, SHARPE 09AUG2021	NAME MRSS, MINIATURE ROTARY SWITCH SERIES,HORIZONTAL,1.27, S,STEEL, LASER MARKING	
		PRODUCT SPEC	APPLICATION SPEC	
MATERIAL		FINISH	WEIGHT	RESTRICTED TO
-		-	-	-
-		-	SIZE A2	CAGE CODE 00779
-		-	DRAWING NO C=2396236	SCALE NTS
-		-	SHEET 3 of 9	REV 1
-		-	CUSTOMER DRAWING	

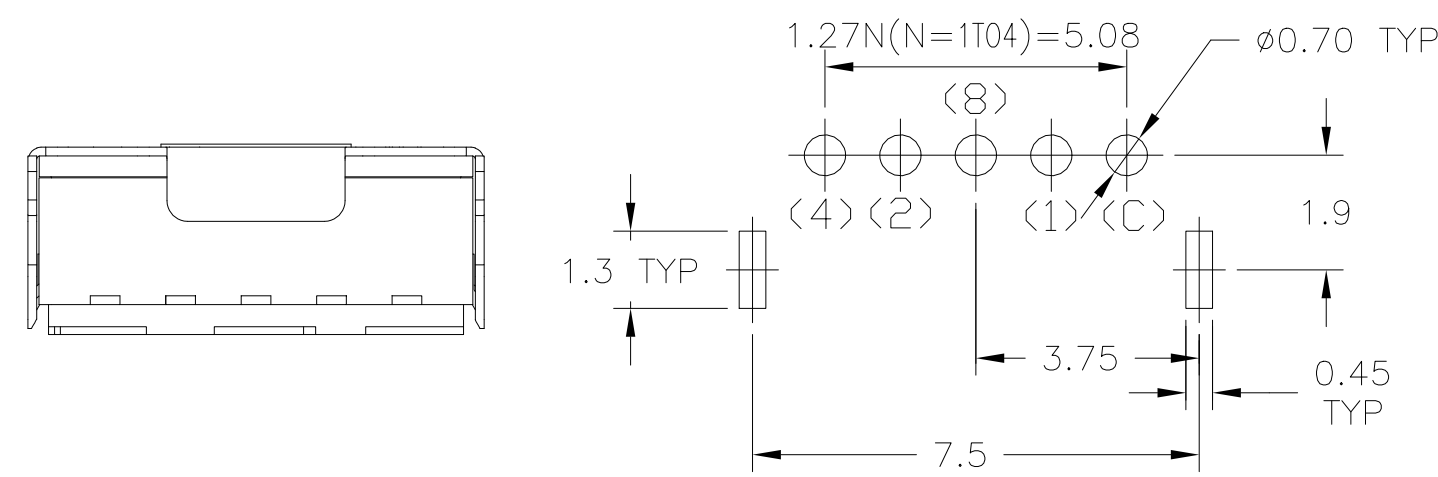
REVISIONS					
P	LTR	DESCRIPTION	DATE	DWN	APVD
-	-	SEE SHEET 1	-	-	-



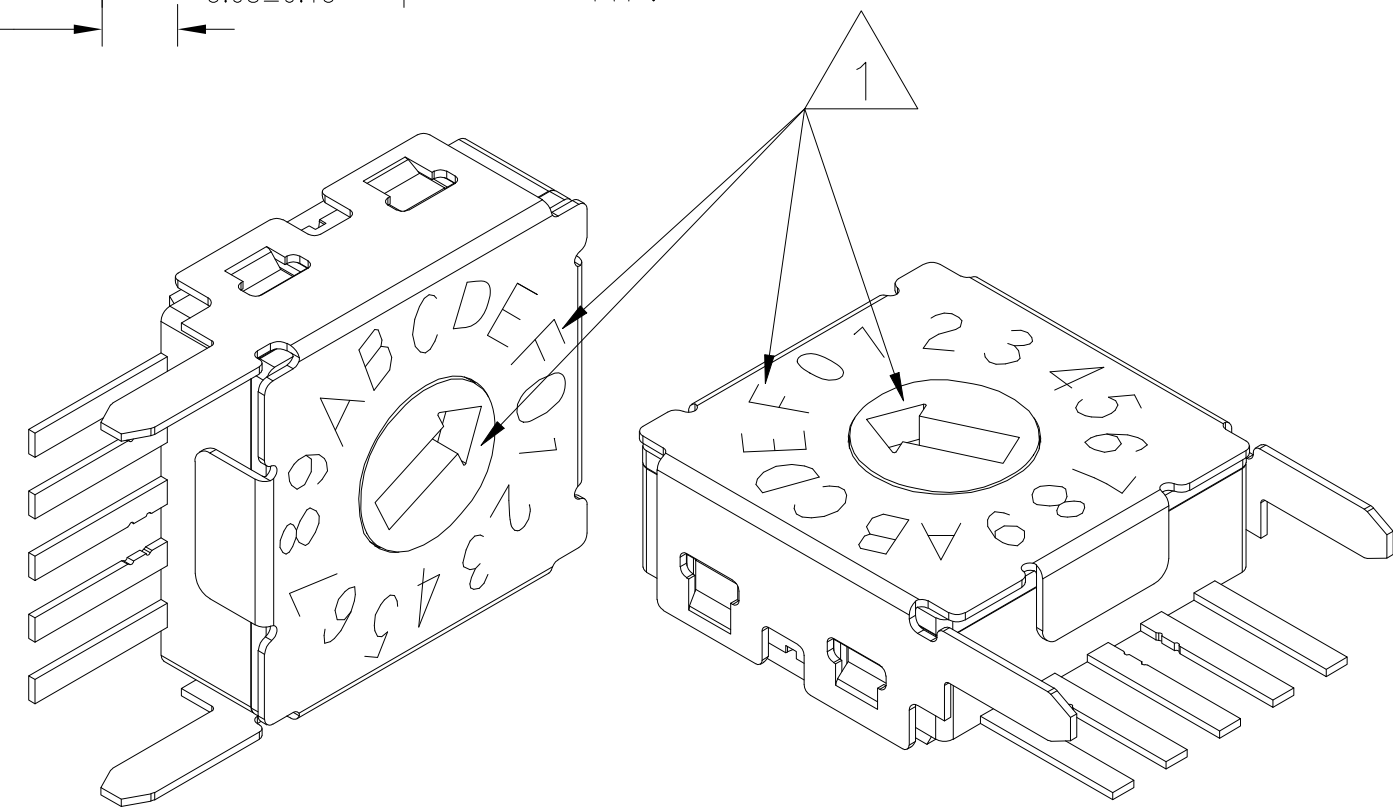
SEE SHEET 9 FOR CODE IDENTIFIER



CODE HEXADECIMAL
 (COMPLEMENT/GRAY/REAL)
 THROUGH-HOLE TERMINALS
 BRACKET STAINLESS STEEL
 LASER MARKING
 16 POSITION



PCB Layout



PRELIMINARY

THIS DRAWING IS A CONTROLLED DOCUMENT.		DWN 09AUG2021 SATHISH KUMAR G	TE TE Connectivity	
DIMENSIONS: mm		CHK 09AUG2021 ALEXANDER, SHARPE		
TOLERANCES UNLESS OTHERWISE SPECIFIED: ±0.15		APVD 09AUG2021 ALEXANDER, SHARPE	NAME MRSS, MINIATURE ROTARY SWITCH SERIES,HORIZONTAL,1.27, S,STEEL, LASER MARKING	
0 PLC ± = 1 PLC ± = 2 PLC ± = 3 PLC ± = 4 PLC ± = ANGLES ± =		PRODUCT SPEC	APPLICATION SPEC	
MATERIAL		FINISH	WEIGHT	RESTRICTED TO
			A2 00779 C=2396236	SCALE NTS SHEET 4 of 9 REV 1
CUSTOMER DRAWING				

REVISIONS					
P	LTR	DESCRIPTION	DATE	DWN	APVD
-	-	SEE SHEET 1	-	-	-

10 POSITION, BINARY COMPLEMENT										
POS	0	1	2	3	4	5	6	7	8	9
C	X	X	X	X	X	X	X	X	X	X
1	X		X		X		X		X	
2	X	X			X	X			X	X
4	X	X	X	X					X	X
8	X	X	X	X	X	X	X	X		

16 POSITION, HEXADECIMAL COMPLEMENT																
POS	0	1	2	3	4	5	6	7	8	9	A	B	C	D	E	F
C	X	X	X	X	X	X	X	X	X	X	X	X	X	X	X	X
1	X		X		X		X		X		X		X		X	
2	X	X			X	X			X	X			X	X		
4	X	X	X	X					X	X	X	X				
8	X	X	X	X	X	X	X	X								

10 POSITION, BINARY GRAY										
POS	0	1	2	3	4	5	6	7	8	9
C	X	X	X	X	X	X	X	X	X	X
1		X	X			X	X			X
2			X	X	X	X				
4					X	X	X	X	X	X
8									X	X

16 POSITION, HEXADECIMAL GRAY																
POS	0	1	2	3	4	5	6	7	8	9	A	B	C	D	E	F
C	X	X	X	X	X	X	X	X	X	X	X	X	X	X	X	X
1		X	X			X	X			X	X		X	X		
2			X	X	X	X				X	X	X	X			
4					X	X	X	X	X	X	X					
8									X	X	X	X	X	X	X	X

10 POSITION, BINARY REAL										
POS	0	1	2	3	4	5	6	7	8	9
C	X	X	X	X	X	X	X	X	X	X
1		X		X		X		X		X
2			X	X			X	X		
4					X	X	X	X		
8									X	X

16 POSITION, HEXADECIMAL REAL																
POS	0	1	2	3	4	5	6	7	8	9	A	B	C	D	E	F
C	X	X	X	X	X	X	X	X	X	X	X	X	X	X	X	X
1		X		X		X		X		X		X		X		X
2			X	X			X	X			X	X			X	X
4					X	X	X	X				X	X	X	X	X
8									X	X	X	X	X	X	X	X

LEGEND

TE SMART PART NUMBER



ACTUATOR ORIENTATION

V=VERTICAL
H=HORIZONTAL

CONFIGURATION/PITCH/COVER COLOR OR BRACKET/MARKING:

0=DIP/2.54/GRAY/LASER, SEE TE DRAWING 2396233
1=DIP/2.54/BLACK/PRINTED, SEE TE DRAWING 2396234
4=SIP/1.27/STAINLESS STEEL/LASER,

ACTUATOR TYPE

D=SCREWDRIVER SLOT, FLUSH

CODE

C=COMPLEMENT
G=GRAY
R=REAL

POSITIONS

10
16

TERMINATION TYPE

SM =SURFACE MOUNT
TH =THROUGH-HOLE

SOLDER TERMINAL CONFIGURATION:

J = J-LEAD
GW=GULLWING
BLANK=THROUGH-HOLE

PACKAGING:

T = TUBE
TR=TAPE AND REEL

SCREWDRIVER SLOT, FLUSH	O	HEXADECIMAL REAL	16	THROUGH-HOLE	TUBE	MRSSH4DR16THT	1-2396236-8	
				GULLWING	TUBE	MRSSH4DR16SMGWT	1-2396236-7	
		BINARY REAL	10	THROUGH-HOLE	TUBE	MRSSH4DR10THT	1-2396236-5	
				GULLWING	TUBE	MRSSH4DR10SMGWT	1-2396236-4	
		HEXADECIMAL GRAY	16	THROUGH-HOLE	TUBE	MRSSH4DG16THT	1-2396236-2	
				GULLWING	TUBE	MRSSH4DG16SMGWT	1-2396236-1	
	BINARY GRAY	10	THROUGH-HOLE	TUBE	MRSSH4DG10THT	2396236-9		
			GULLWING	TUBE	MRSSH4DG10SMGWT	2396236-8		
	F	HEXADECIMAL COMPLEMENT	16	THROUGH-HOLE	TUBE	MRSSH4DC16THT	2396236-6	
				GULLWING	TUBE	MRSSH4DC16SMGWT	2396236-5	
		BINARY COMPLEMENT	10	THROUGH-HOLE	TUBE	MRSSH4DC10THT	2396236-3	
				GULLWING	TUBE	MRSSH4DC10SMGWT	2396236-2	
ACTUATION		ACTUATOR POSITION	CODE	POSITIONS	SOLDER TERMINAL CONFIGURATION	PACKAGING	TE SMART PART NUMBER	TE PART NUMBER
							TE SMART PART NUMBER	TE PART NUMBER

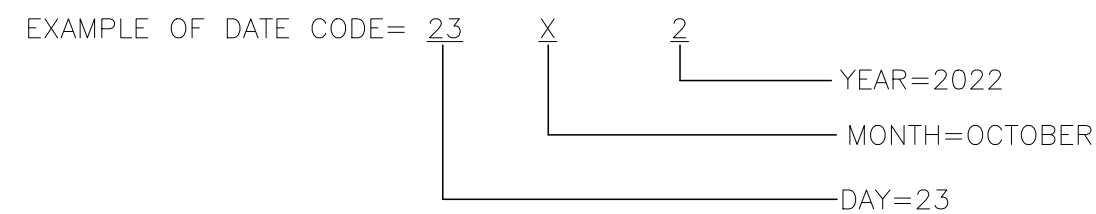
THIS DRAWING IS A CONTROLLED DOCUMENT.		DWN 09AUG2021 SATHISH KUMAR_G	TE Connectivity	
DIMENSIONS: mm		CHK 09AUG2021 ALEXANDER, SHARPE		
TOLERANCES UNLESS OTHERWISE SPECIFIED:		APVD 09AUG2021 ALEXANDER, SHARPE	NAME MRSS, MINIATURE ROTARY SWITCH SERIES,HORIZONTAL,1.27, S,STEEL, LASER MARKING	
0 PLC ± = 1 PLC ± = 2 PLC ± = 3 PLC ± = 4 PLC ± =		PRODUCT SPEC	APPLICATION SPEC	
MATERIAL		WEIGHT	SIZE A2	CAGE CODE 00779
FINISH		SCALE NTS	DRAWING NO C=2396236	RESTRICTED TO
		CUSTOMER DRAWING	SHEET 5 of 9	REV 1

PRELIMINARY

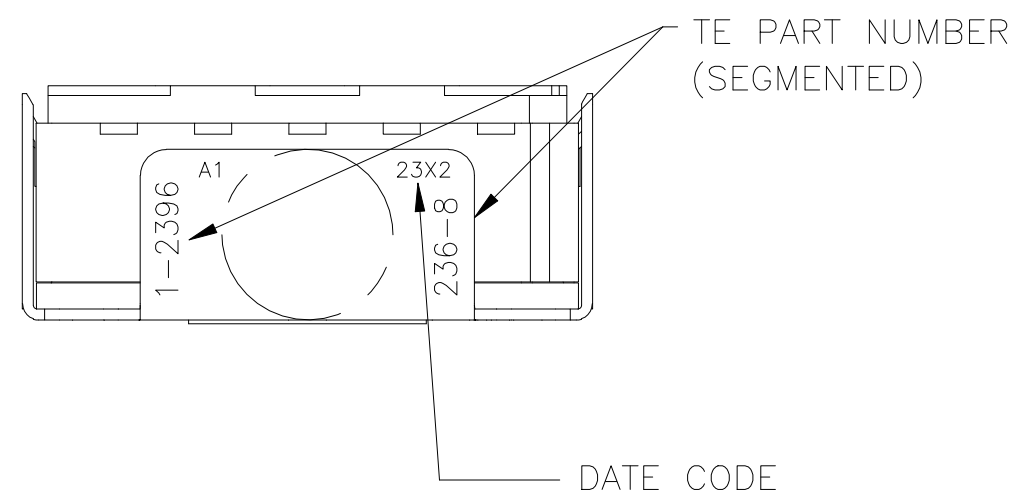
NOTES:

- 1 SEE TABLE, SHEET 5 OF 9 FOR ACTUATOR POSITION WHEN DELIVERED, THE SWITCH SHALL REMAIN IN THIS POSITION DURING MOUNTING/TERMINATION TO AND CLEANING OF THE P.C.BOARD.
- 2. COMPLIANCE: THE CURRENT STATEMENT OF COMPLIANCE IS AVAILABLE AT TE.COM
- 3. IF THE SWITCH IS NOT ACTUATED FOR AN EXTENDED PERIOD OF TIME, SIX MONTHS, IT MAY REQUIRE ACTUATING TO RESTORE SWITCH FUNCTION.
- 4. MSL 1 PER JIS C61760-4:2016 AND IEC 61760-4:2015
- 5. TAPE AND REEL PER EIA 481 TAPE WIDTH 24mm, PITCH 16MM, SEE SHEET 7 OF 9.

6 TE PART NUMBER AND DATE CODE



- MONTH=
- 1 = JANUARY
 - 2 = FEBRUARY
 - 3 = MARCH
 - 4 = APRIL
 - 5 = MAY
 - 6 = JUNE
 - 7 = JULY
 - 8 = AUGUST
 - 9 = SEPTEMBER
 - X = OCTOBER
 - Y = NOVEMBER
 - Z = DECEMBER



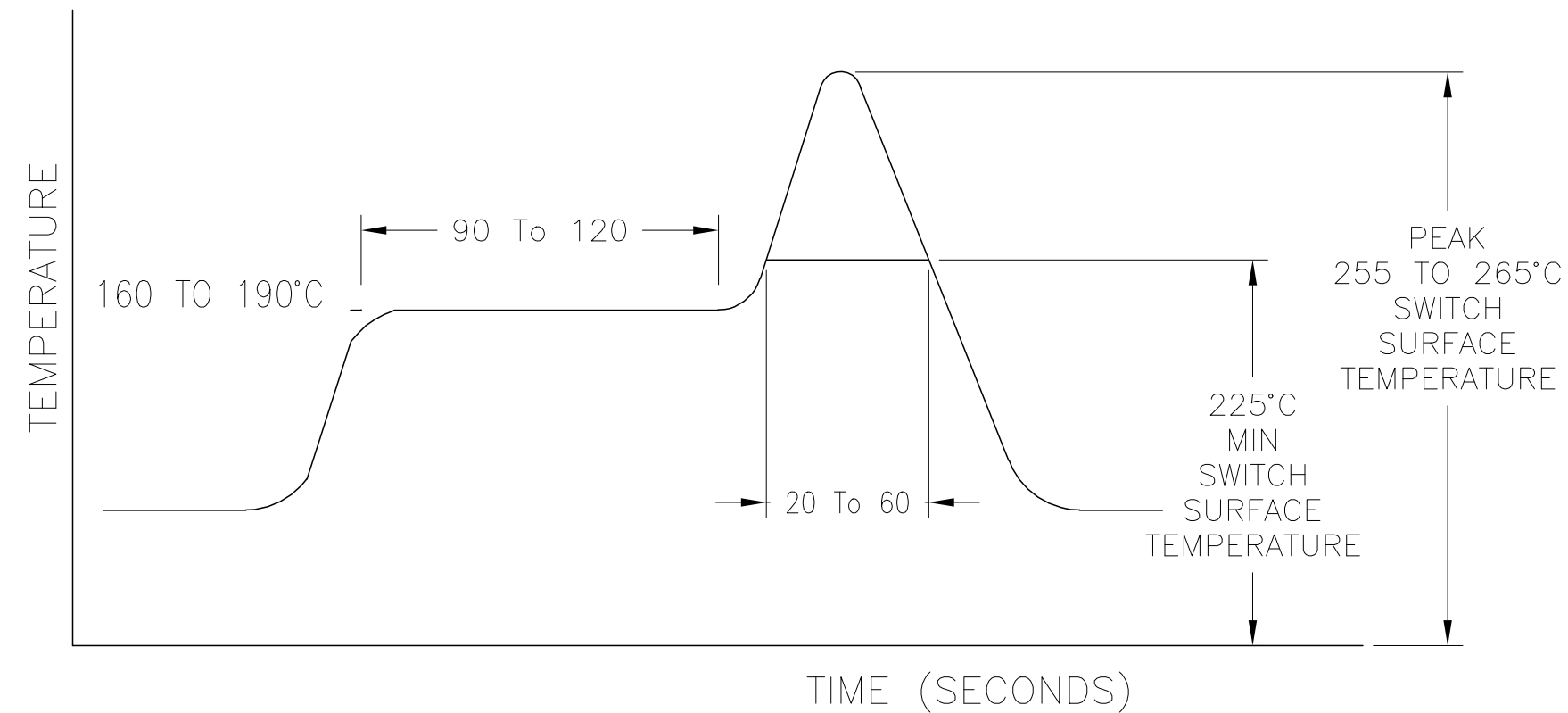
SPECIFICATIONS:

OPERATING CURRENT, 0.4VA @ 20VAC OR DC, MAXIMUM.
 MINIMUM SWITCHING CURRENT, 0.1µA @ 1mV MINIMUM.
 MAXIMUM SWITCHING CURRENT(DURING MAKE OR BREAK), 10mA@5VDC
 NONE SWITCHING CURRENT 100mA@50VDC MAXIMUM
 INITIAL CONTACT RESISTANCE, 100 MILLIOHMS MAX. @ 2V DC 10MILLIAMPS
 CONTACT RESISTANCE AFTER TEST AND PCB TERMINATION, 300 MILLIOHMS MAX.
 INSULATION RESISTANCE, 1,000 MEGOHMS MIN. @ 250 VDC
 DIELECTRIC STRENGTH, 250 VAC , 1 MINUTE
 ELECTRICAL LIFE, 10,000 ACTUATIONS MIN. @ 5V DC 10MILLIAMPS
 MECHANICAL LIFE, 10,000 ACTUATIONS MIN. AT NO LOAD.
 INITIAL ACTUATION TORQUE, 2.0 TO 19.6mN.m
 TEMPERATURE RANGE, -40 TO +85°C

SOLDERING CONDITIONS

MANUAL	TEMPERATURE OF IRON TIP: 320°C MAX. FOR 4±1 SECONDS	PRINTED CIRCUIT BOARD THICKNESS 1.6
WAVE (FOR THROUGH-HOLE)	PREHEAT 100 TO 105°C FOR 30±5 SECONDS	
	SOLDER TEMPERATURE 265°C±3°C FOR 8±2 SECONDS	
REFLOW (FOR GULLWING)	PREHEAT 160 TO 190°C FOR 90 TO 120 SECONDS	
	REFLOW TEMPERATURE 225°C (SWITCH SURFACE) FOR 20 TO 60 SECONDS	
	PEAK TEMPERATURE 255 TO 265°C (SWITCH SURFACE)	
	MAXIMUM NUMBER OF EXPOSURES TO REFLOW PROCESS IS 2	

REFLOW SOLDER PROFILE FOR GULLWING TERMINALS



1	GOLD OVER NICKEL	STAINLESS STEEL	BRACKET	8
1	N/A	STAINLESS STEEL	PLATE	7
1	GOLD OVER NICKEL	COPPER ALLOY	CONTACT	6
1	N/A	FPM (FLUOROCARBON)	O-RING	5
1	WHITE	LCP	ACTUATOR	4
1	GRAY	POLYPHENYLENE SULFIDE	COVER	3
5	GOLD OVER NICKEL	BRASS	TERMINAL	2
1	BLACK	POLYPHENYLENE SULFIDE	CASE	1
QTY	FINISH/COLOR	MATERIAL	COMPONENT	ITEM

THIS DRAWING IS A CONTROLLED DOCUMENT.

DWN 09AUG2021 SATHISH KUMAR G
 CHK 09AUG2021 ALEXANDER, SHARPE
 APVD 09AUG2021 ALEXANDER, SHARPE

TE Connectivity

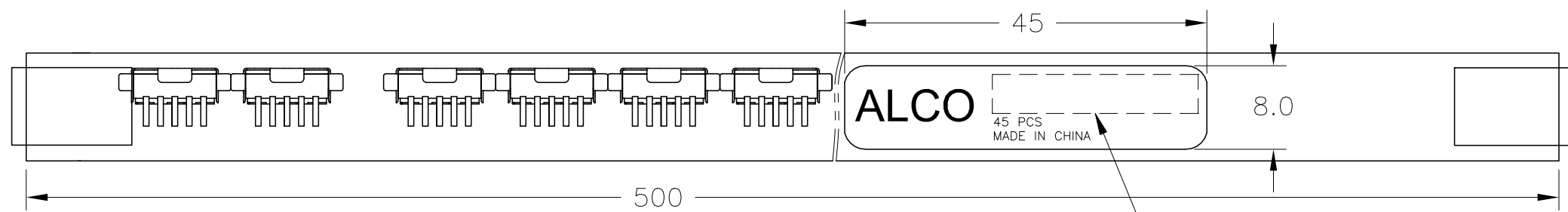
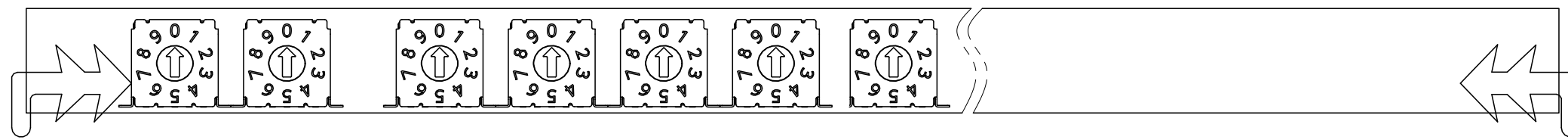
NAME MRSS, MINIATURE ROTARY SWITCH SERIES,HORIZONTAL,1.27, S,STEEL, LASER MARKING

SIZE A2 CAGE CODE 00779 DRAWING NO C=2396236 RESTRICTED TO

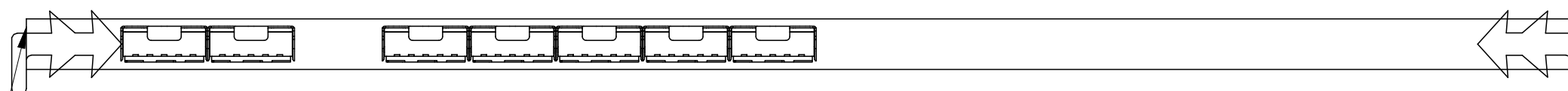
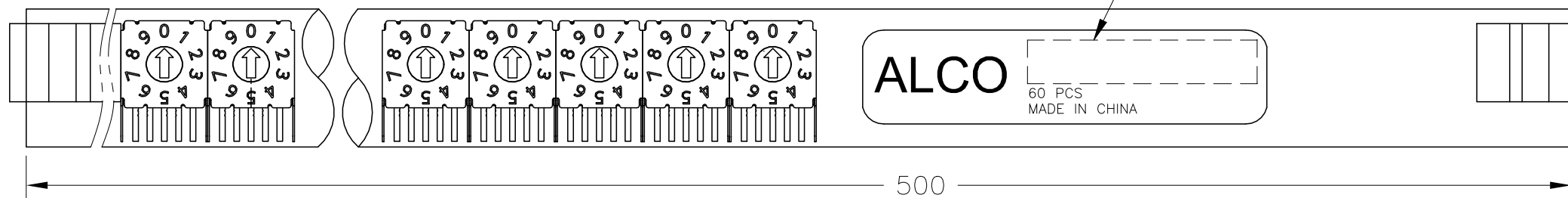
CUSTOMER DRAWING SCALE NTS SHEET 6 of 9 REV 1

PRELIMINARY

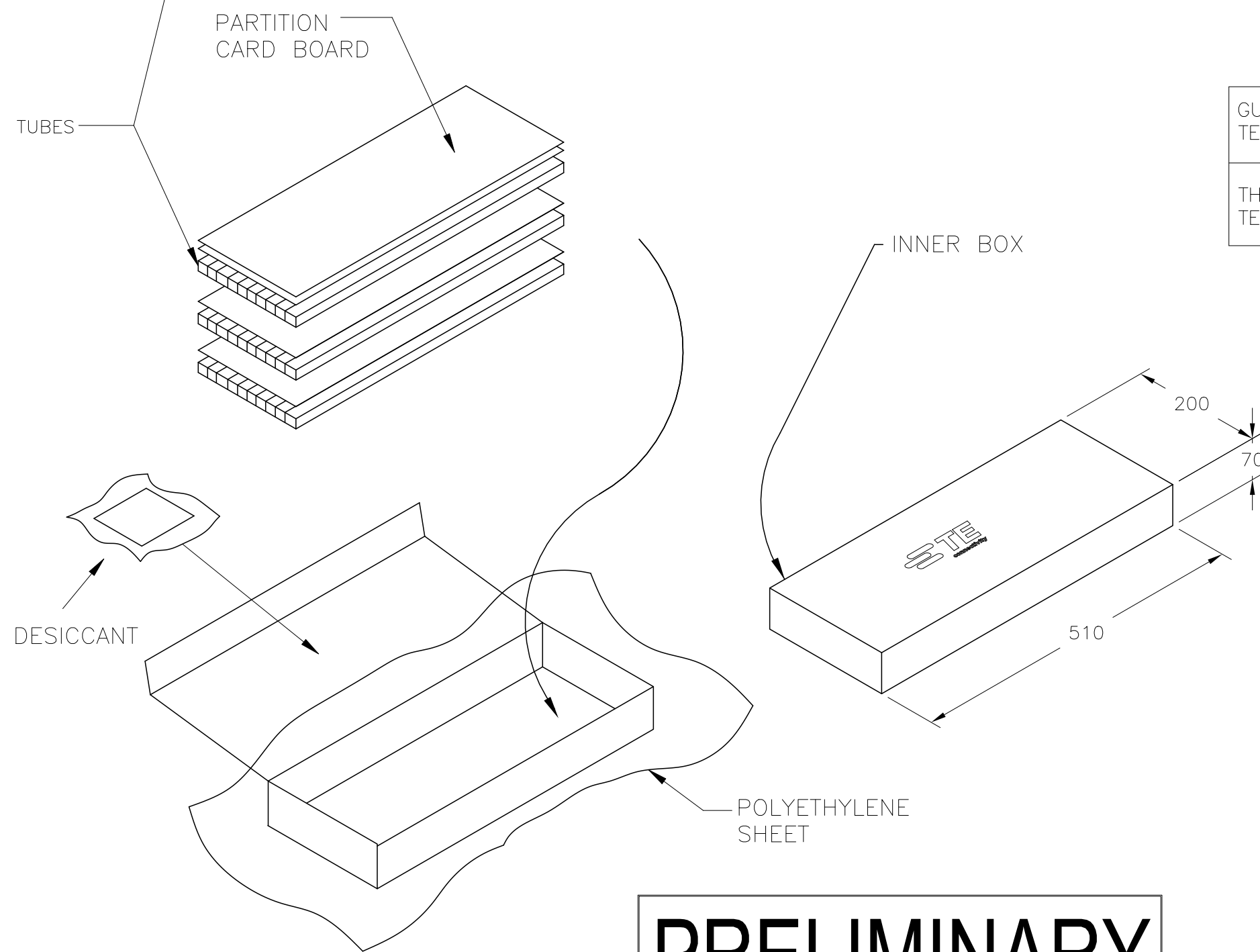
PACKAGING SPECIFICATIONS
TUBE FOR SMT GULLWING TERMINALS



TUBE FOR THROUGH-HOLE TERMINALS

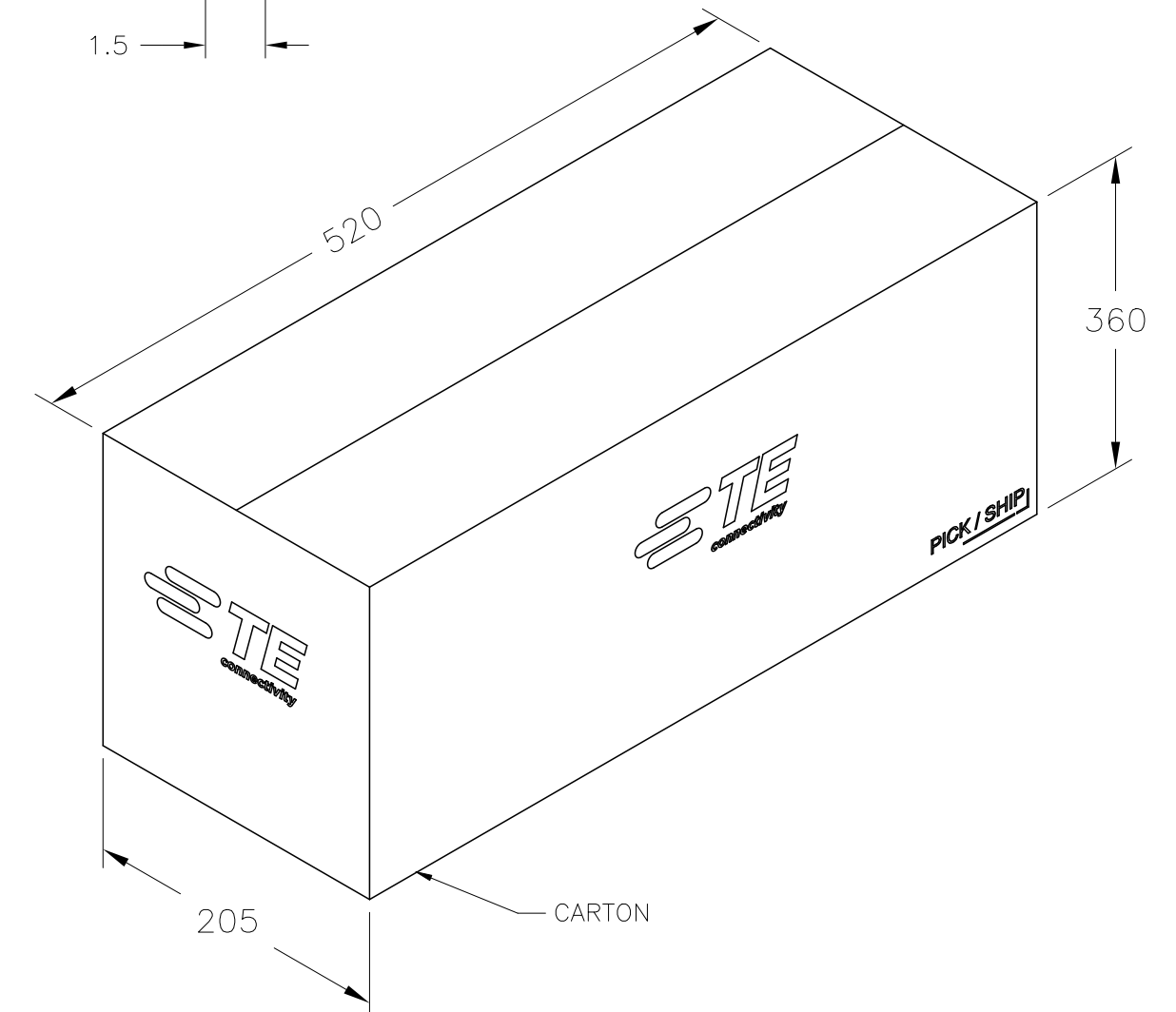
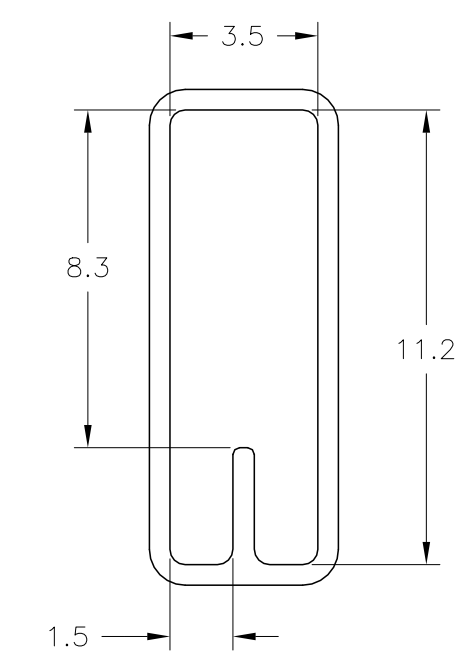
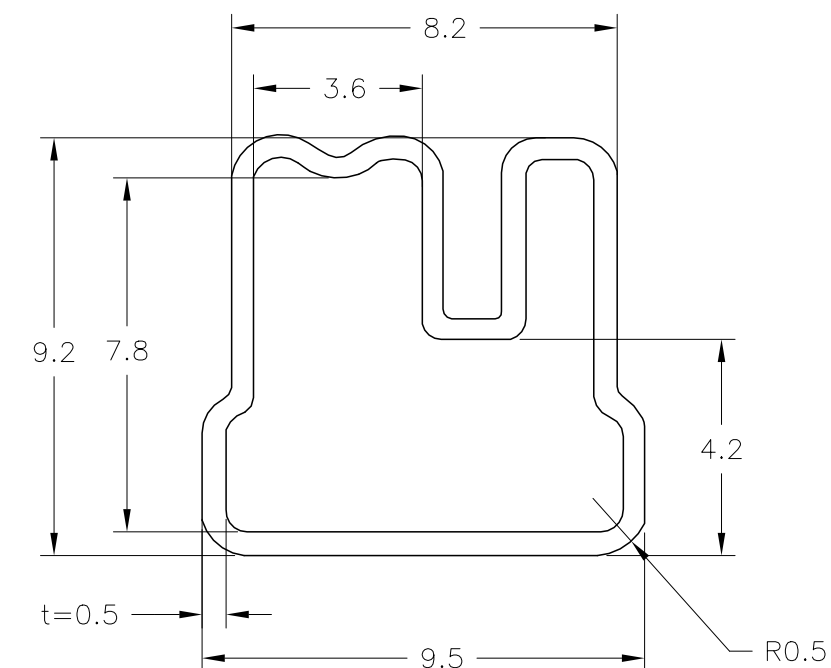


TE PART NUMBER
SEE TABLE, SHEET 5



	NUMBER OF SWITCHES PER		
	TUBE	INNER BOX	CARTON
GULLWING TERMINALS	45	2,700	13,500
THROUGH-HOLE TERMINALS	60	3,600	18,000

REVISIONS					
P	LTR	DESCRIPTION	DATE	DWN	APVD
-	-	SEE SHEET 1	-	-	-



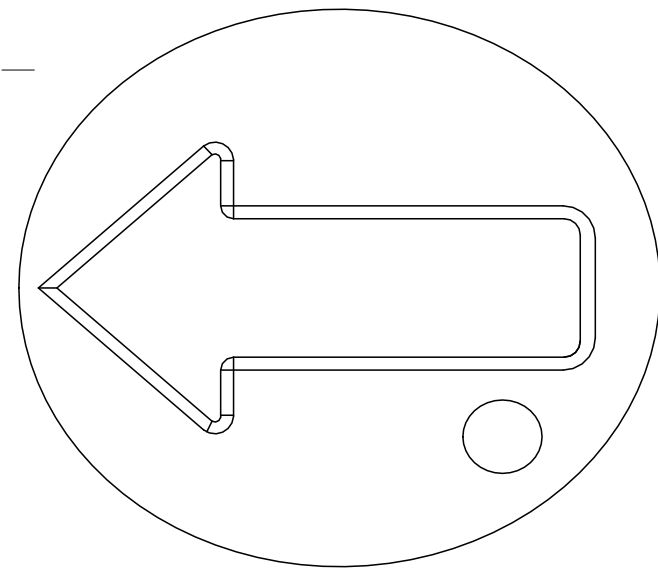
PRELIMINARY

THIS DRAWING IS A CONTROLLED DOCUMENT.		DWN 09AUG2021 SATHISH KUMAR_G	TE Connectivity				
DIMENSIONS: mm		CHK 09AUG2021 ALEXANDER, SHARPE					
TOLERANCES UNLESS OTHERWISE SPECIFIED:		APVD 09AUG2021 ALEXANDER, SHARPE	NAME MRSS, MINIATURE ROTARY SWITCH SERIES,HORIZONTAL,1.27, S,STEEL, LASER MARKING				
0 PLC ± = 1 PLC ± = 2 PLC ± = 3 PLC ± = 4 PLC ± = ANGLES ± =		PRODUCT SPEC	APPLICATION SPEC				
MATERIAL		FINISH	WEIGHT	SIZE A2	CAGE CODE 00779	DRAWING NO C=2396236	RESTRICTED TO
CUSTOMER DRAWING			SCALE NTS	SHEET 8 of 9	REV 1		

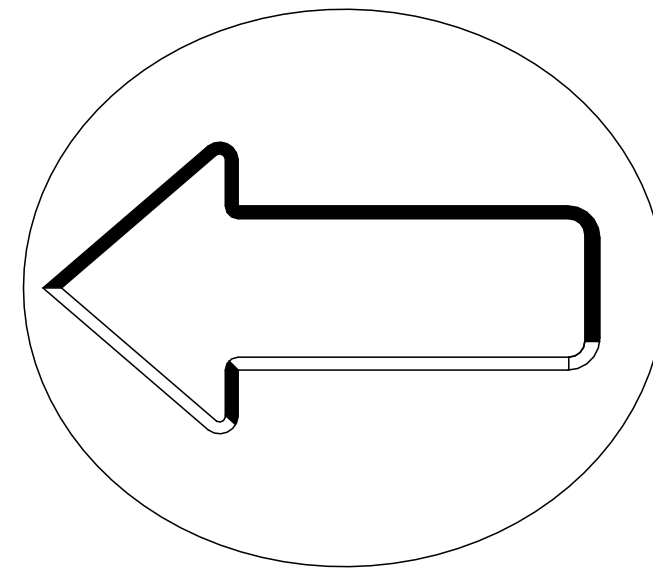
REVISIONS					
P	LTR	DESCRIPTION	DATE	DWN	APVD
-	-	SEE SHEET 1	-	-	-

CODE IDENTIFIER ON ACTUATOR

COMPLIMENT CODE-

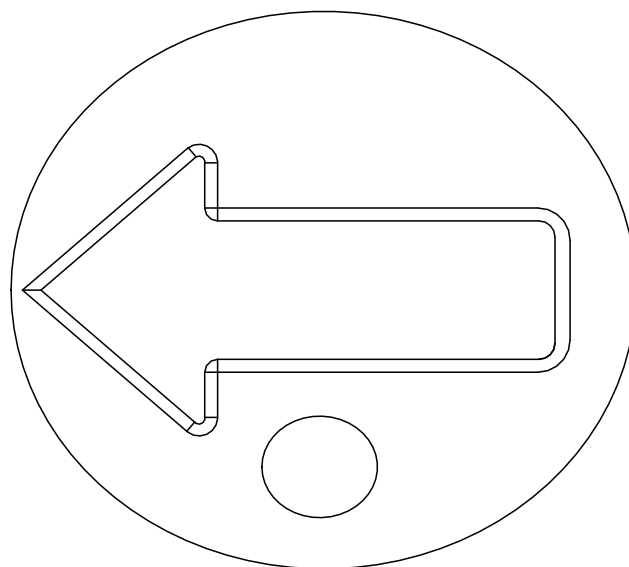


10 POSITION

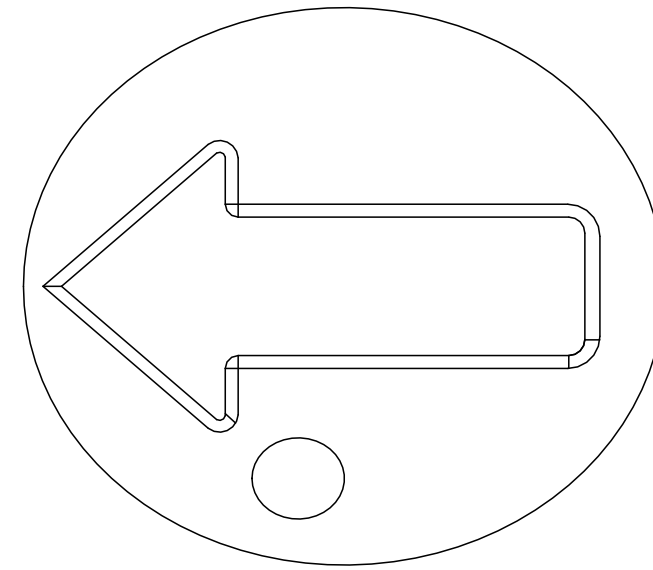


16 POSITION (NO IDENTIFIER)

GRAY CODE-

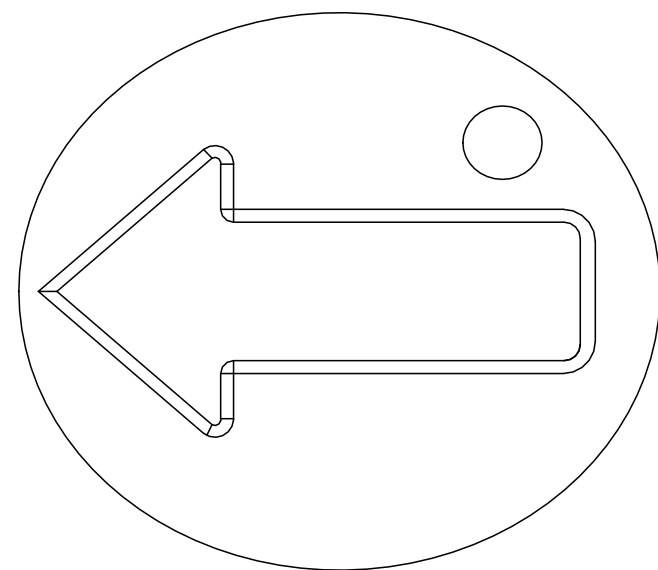


10 POSITION

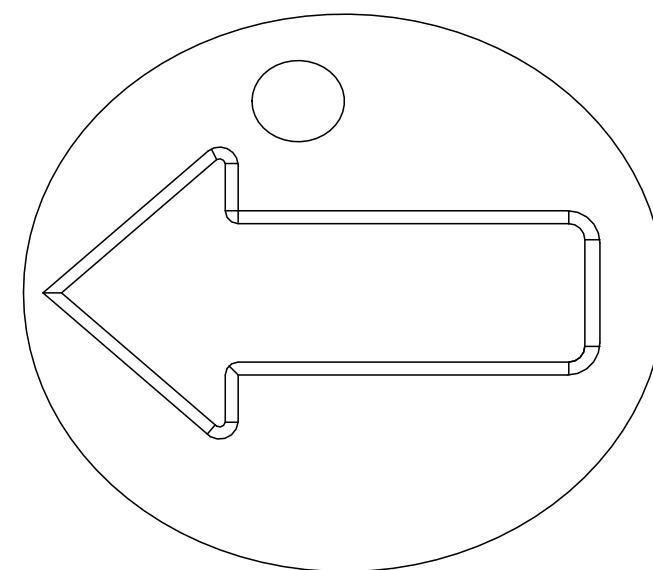


16 POSITION

REAL CODE-



10 POSITION



16 POSITION

PRELIMINARY

THIS DRAWING IS A CONTROLLED DOCUMENT.		DWN 09AUG2021 SATHISH KUMAR G	TE TE Connectivity	
DIMENSIONS: mm		CHK 09AUG2021 ALEXANDER, SHARPE		
TOLERANCES UNLESS OTHERWISE SPECIFIED:		APVD 09AUG2021 ALEXANDER, SHARPE	NAME MRSS, MINIATURE ROTARY SWITCH SERIES,HORIZONTAL,1.27, S,STEEL, LASER MARKING	
0 PLC ± =		PRODUCT SPEC	APPLICATION SPEC	
1 PLC ± =		APPLICATION SPEC	RESTRICTED TO	
2 PLC ± =		WEIGHT	SIZE A2	CAGE CODE 00779
3 PLC ± =		FINISH	DRAWING NO C=2396236	SCALE NTS
4 PLC ± =		MATERIAL	SHEET 9 of 9	REV 1
ANGLES ± =		CUSTOMER DRAWING		