



0.5S4E_1U Series

0.5W - Single Output DC-DC Converter - Fixed Input - Isolated & Unregulated

DC-DC Converter

0.5 Watt

- ⊕ 4 Pin SIL
- ⊕ 1KVDC Isolation
- ⊕ Operation temperature range: -40°C ~ +85°C
- ⊕ Low ripple and noise
- ⊕ Efficiency up to 83%
- ⊕ EMI complies with EN55032 Class B
- ⊕ Industry Standard Pinout

The 0.5S4E_1U series is a family of cost effective 0.5W single output DC-DC converters. These converters achieve low-cost and ultra-miniature SIP4 pin size. Devices are encapsulated using flame retardant resin.

They are specially designed for applications where an isolated voltage is required in a distributed power supply system. Such as: digit circuit condition; normal low-frequency artificial circuit condition; relay drive circuit and data switching circuit condition, etc.



Common specifications	
Cooling:	Free air convection
Operation temperature range:	-40°C~+85°C
Storage temperature range:	-40°C ~+125°C
Casing temperature:	100°C MAX
Soldering temperature:	260°C MAX, 1.5mm from case for 10 sec.
Storage humidity range:	< 95%
Case material:	Plastic [UL94-V0]
Pin material:	>1,121,000 hours
Safety standard:	IEC 60950-1
MTBF (MIL-HDFK-217F@25°C):	SIP: 0.5mm Alloy42 solder-coated
Weight:	1.5g / 1.9g (48V)

Output specifications					
Item	Test condition	Min	Typ	Max	Units
Output voltage accuracy			±3		%
Line regulation	For Vin change of ±1%			±1.2	%
Load regulation	20% to 100% load • 3.3V output • others		20 10		% %
Ripple & Noise*	20MHz Bandwidth		100		mVpk-pk
Temperature drift	100% full load		±0.02		%/°C
Switching frequency	variable		80		KHz

* Ripple and noise are measured by "parallel cable" method, please see DC-DC Converter Application Notes for specific operation.

Input specifications					
Item	Test condition	Min	Typ	Max	Units
Voltage range			10		%
Reflected ripple current*			20		mApk-pk
Surge voltage	• 3.3VDC input • 5VDC input • 12VDC input • 15VDC input • 24VDC input • 48VDC input (SIP)			6 7 15 18 28 54	VDC VDC VDC VDC VDC VDC
Input filter	Filter capacitor				

* Measured with a simulated source inductance of 12μH and a source capacitor Cin (47μF, ESR<1.0Ω at 100KHz).

EMC specifications		
CE*	EN55032	CLASS B
RE	EN55032	CLASS B
ESD	IEC/EN61000-4-2	perf. Criteria A
RS	IEC/EN61000-4-3	perf. Criteria A
EFT**	IEC/EN61000-4-4	perf. Criteria A
Surge**	IEC/EN61000-4-5	perf. Criteria A
CS	IEC/EN61000-4-6	perf. Criteria A
PFMF	IEC/EN61000-4-8	perf. Criteria A

* Input filter components are required to help meet conducted emission class B, which application refer to the EMI filter section.

** An external filter is required if the module has to meet IEC61000-4-4 and IEC61000-4-5.

Isolation specifications					
Item	Test condition	Min	Typ	Max	Units
Isolation voltage	Tested for 1 minute and 1mA max	1000			VDC
Isolation resistance	Test at 500VDC	1000			MΩ
Isolation capacitance	Input-output, 100KHz/0.1V		60		pF

Example SIP4 Case:

0.5S4E_0505S1U
0.5= 0.5 Watt; S4= SIP4; E= Pinning; 05= 5 Vin; 05= 5Vout;
S= Single Output; 1= 1kVDC Isolation; U= Unregulated Output

Note:

1. Operation under minimum load will not damage the converter; However, they may not meet all specification listed, and that will reduce the life of product.
2. All specifications measured at Ta=25°C, humidity<75%, nominal input voltage and rated output load unless otherwise specified.
3. Only typical models listed, other models may be different, please contact our technical person for more details.
4. In this datasheet, all the test methods of indications are based on corporate standards.

0.5S4E_1U Series

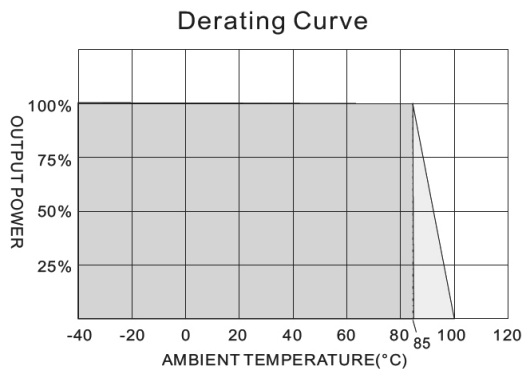
0.5W - Single Output DC-DC Converter - Fixed Input - Isolated & Unregulated

Part Number	Input Voltage [V]	Input current [mA, typ]	Output Voltage [VDC]	Output current [mA, max]	Efficiency [%, typ]	Capacitive load [μF max]
0.5S4E_0303S1U	3.3	205	3.3	152	6	100
0.5S4E_0305S1U	3.3	216	5	100	70	100
0.5S4E_0307S1U	3.3	216	7.2	69	70	100
0.5S4E_0309S1U	3.3	216	9	56	70	100
0.5S4E_0312S1U	3.3	201	12	42	72	100
0.5S4E_0315S1U	3.3	208	15	33	73	100
0.5S4E_0318S1U	3.3	208	18	28	73	100
0.5S4E_0324S1U	3.3	208	24	21	73	100
0.5S4E_0503S1U	5	132	3.3	151.5	76	100
0.5S4E_0505S1U	5	121	5	100	83	100
0.5S4E_0507S1U	5	134	7.2	69.44	75	100
0.5S4E_0509S1U	5	128	9	55.55	78	100
0.5S4E_0512S1U	5	127	12	41.67	79	100
0.5S4E_0515S1U	5	130	15	33.33	77	100
0.5S4E_0518S1U	5	127	18	27.77	79	100
0.5S4E_0524S1U	5	134	24	20.83	75	100
0.5S4E_1203S1U	12	58	3.3	151.5	72	100
0.5S4E_1205S1U	12	54	5	100	78	100
0.5S4E_1207S1U	12	57	7.2	69.44	73	100
0.5S4E_1209S1U	12	57	9	55.55	73	100
0.5S4E_1212S1U	12	58	12	41.67	72	100
0.5S4E_1215S1U	12	61	15	33.33	69	100
0.5S4E_1218S1U	12	61	18	27.77	68	100
0.5S4E_1224S1U	12	59	24	20.83	71	100
0.5S4E_1503S1U	15	44	3.3	151.5	75	100
0.5S4E_1505S1U	15	43	5	100	78	100
0.5S4E_1507S1U	15	44	7.2	69.44	75	100
0.5S4E_1509S1U	15	44	9	55.55	75	100
0.5S4E_1512S1U	15	44	12	41.67	77	100
0.5S4E_1515S1U	15	48	15	33.33	70	100
0.5S4E_1518S1U	15	51	18	27.77	66	100
0.5S4E_1524S1U	15	51	24	20.83	66	100
0.5S4E_2403S1U	24	31	3.3	151.5	69	100
0.5S4E_2405S1U	24	29	5	100	73	100
0.5S4E_2407S1U	24	30	7.2	69.44	70	100
0.5S4E_2409S1U	24	30	9	55.55	71	100
0.5S4E_2412S1U	24	30	12	41.67	71	100
0.5S4E_2415S1U	24	29	15	33.33	73	100
0.5S4E_2418S1U	24	29	18	27.77	73	100
0.5S4E_2424S1U	24	29	24	20.83	72	100
0.5S4E_4803S1U	48	17	3.3	151.5	60	100
0.5S4E_4805S1U	48	16	5	100	66	100
0.5S4E_4807S1U	48	17	7.2	69.44	60	100
0.5S4E_4809S1U	48	17	9	55.55	62	100
0.5S4E_4812S1U	48	17	12	41.67	64	100
0.5S4E_4815S1U	48	17	15	33.33	62	100
0.5S4E_4818S1U	48	17	18	27.77	62	100
0.5S4E_4824S1U	48	18	24	20.83	61	100

0.5S4E_1U Series

0.5W - Single Output DC-DC Converter - Fixed Input - Isolated & Unregulated

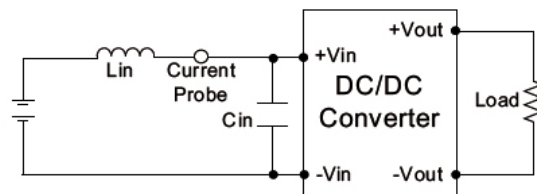
Typical characteristics



Test configurations

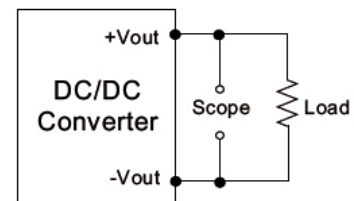
Input reflected ripple current test step

Input reflected ripple current is measured through a source inductor L_{in} (12 μ H) and a source capacitor C_{in} (47 μ F, ESR<1.0 Ω) at 100KHz) at nominal input and full load.



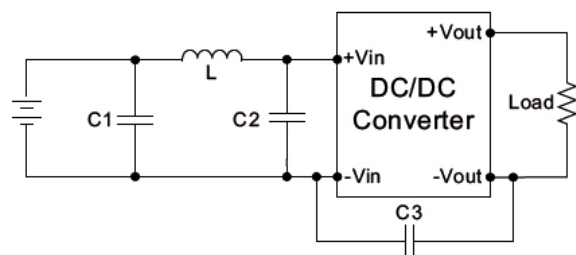
Output ripple & noise measurement test

The scope measurement bandwidth is 20MHz.



EMI filter

Input filter components (C1, L, C2, C3) are used to help meet conducted emissions requirement for the module. These components should be mounted as close as possible to the module; and all leads should be minimized to decrease radiated noise.

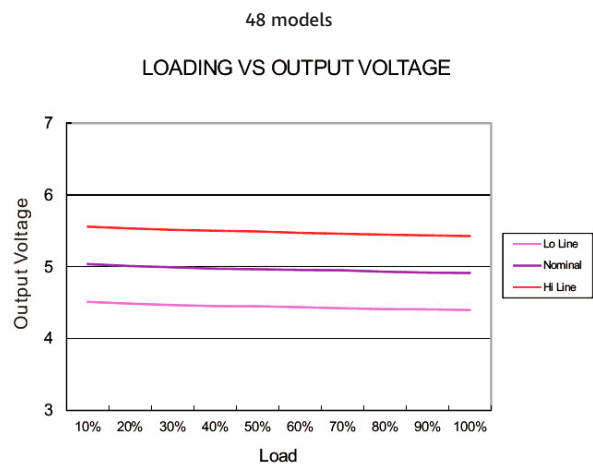
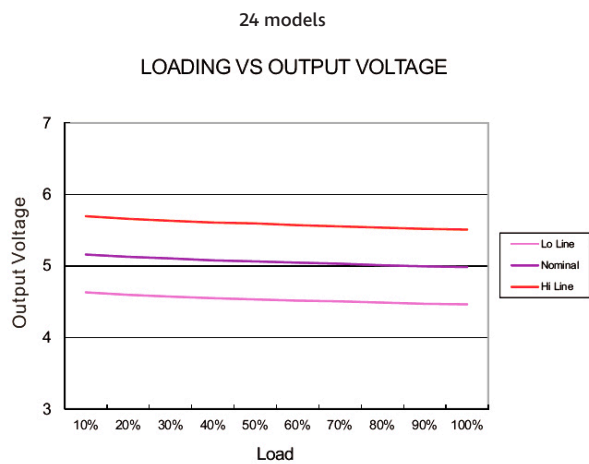
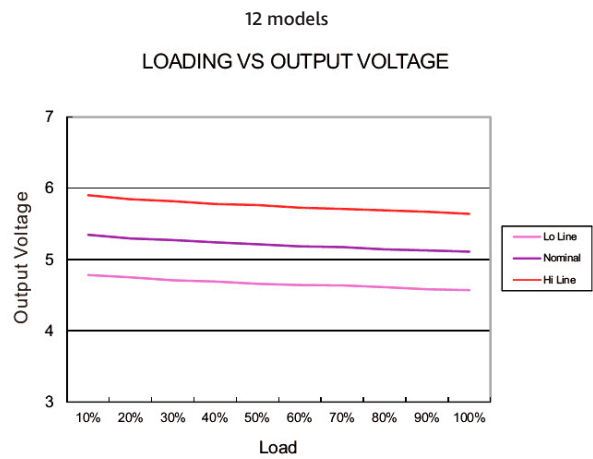
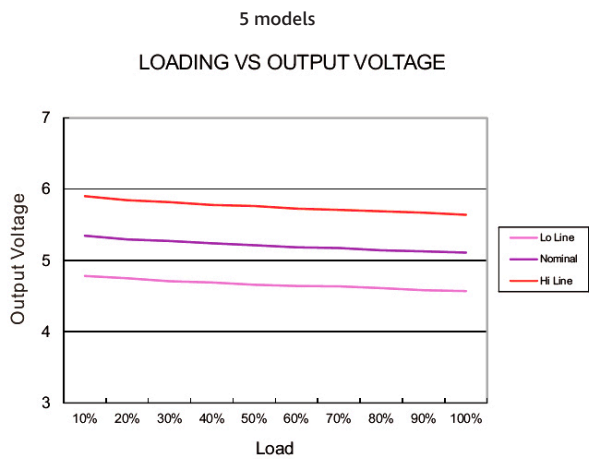


	C1	L	C2	C3
0.5S4E_03xx_1U	1210, 2.2 μ F/100V	18 μ H		
0.5S4E_05xx_1U	1210, 2.2 μ F/100V	18 μ H		
0.5S4E_12xx_1U	1210, 2.2 μ F/100V	18 μ H		
0.5S4E_15xx_1U	1210, 2.2 μ F/100V	18 μ H		
0.5S4E_24xx_1U	1210, 2.2 μ F/100V	18 μ H	1210, 2.2 μ F/100V	1206, 470pF/2KV
0.5S4E_48xx_1U	Electrolytic capacitor, 10 μ F/100V	18 μ H	1210, 2.2 μ F/100V	1206, 470pF/2KV

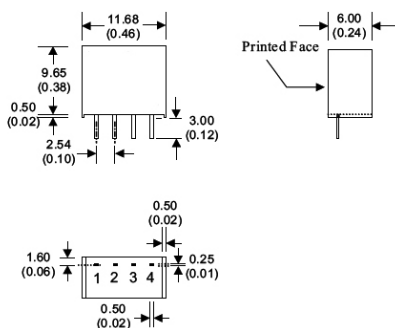
0.5S4E_1U Series

0.5W - Single Output DC-DC Converter - Fixed Input - Isolated & Unregulated

Loading vs. output voltage



Mechanical dimensions



* The thickness of 48V input voltage model is 7.50(0.29)

4 Pin SIL Package

- Notes : All dimensions are typical in millimeters (inches).
1. Pin diameter: 0.5 ± 0.05 (0.02 ± 0.002)
 2. Pin pitch and length tolerance: ± 0.35 (± 0.014)
 3. Case Tolerance: ± 0.5 (± 0.02)

PIN CONNECTIONS	
PIN NUMBER	SINGLE
1	-V Input
2	+V Input
3	-V Output
4	+V Output

(The Pin Connection of high isolation one is the same with normal one.)