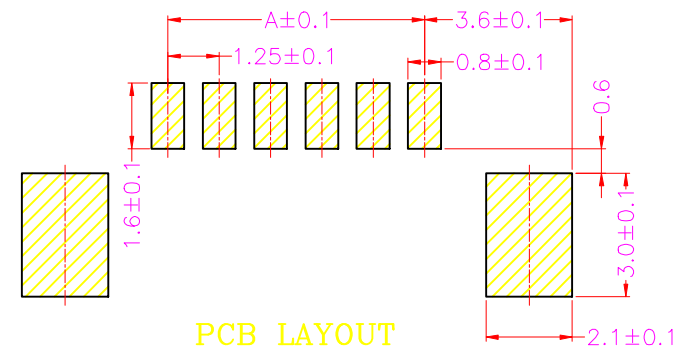
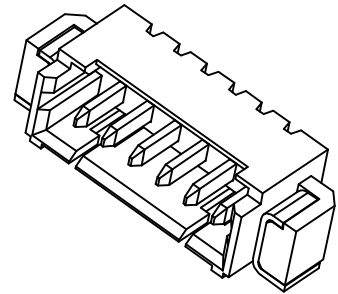
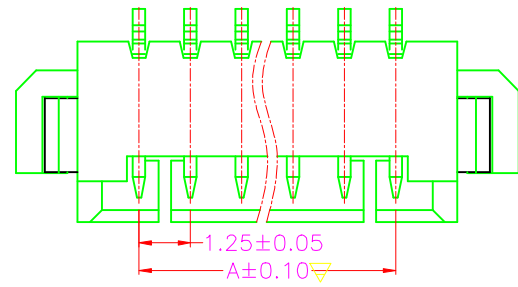
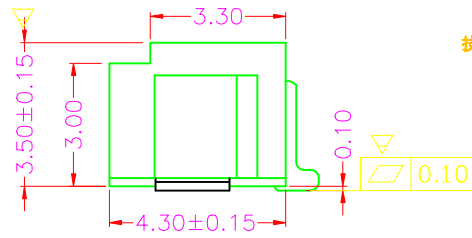
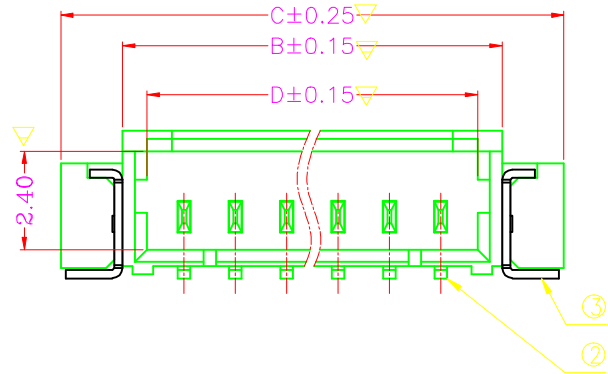


REV(版本)	DESCRIPTION(描述)	NAME(名字)	DATE(日期)

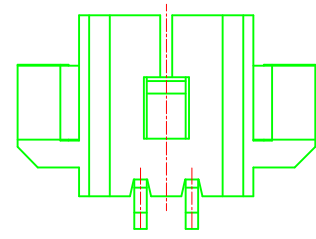
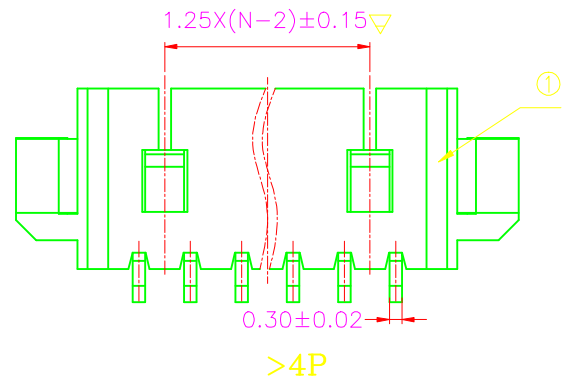


PCB LAYOUT



- 技术指标:
1. 塑件表面应光滑、无毛边、无明显收缩、缺陷、裂纹等现象。
  2. 温度范围: -40° C~85° C.  
Working temp:-40° C~85° C.
  3. 额定电压: 100V, AC/DC.  
Voltage rating:100V AV/DC(rms)
  4. 接触电阻: ≤40mΩ.  
Contact resistance:40m Ω max.
  5. 绝缘电阻: ≥100MΩ.  
Insulation resistance:100M Ω min
  6. 额定电流: 2A , AC/DC.  
Current rating:2A AV/DC
  7. 耐电压: AC 500V/1分钟  
Withstanding Voltage:500V AC/minute
  8. PIN保持力: 5N min  
pin Retention Force:5N min
  9. 主体材料:LCP UL94-V0, 本色  
Housing material:LCP UL94-V0, 本色
  10. 端子材:黄铜C2680, 镀镍50u" min, 镀亮锡100u"min  
Terminal materl:Brass C2680, plating Ni 50u" min, plating Tin 100u"min
  11. 焊片材料:黄铜C2680, 镀镍50u" min, 镀亮锡100u"min  
Solder tab material:Brass C2680, plating Ni 50u" min, plating Tin 100u"min
  12. 标有"▽"为重点管控  
MAJOR DIMENSION: ▽

CKT	DimA	DimB	DimC	DimD
2	1.25	4.45	7.45	3.05
3	2.50	5.70	8.70	4.30
4	3.75	6.95	9.95	5.55
5	5.00	8.20	11.20	6.80
6	6.25	9.45	12.45	8.05
7	7.50	10.70	13.70	9.30
8	8.75	11.95	14.95	10.55
9	10.00	13.20	16.20	11.8
10	11.25	14.45	17.45	13.05
11	12.50	15.70	18.70	14.3
12	13.75	16.95	19.95	15.55
13	15.00	18.20	21.20	16.80
14	16.25	19.45	22.45	18.05
15	17.50	20.70	23.70	19.3
16	18.75	21.95	24.95	20.55



2P&3P

一般公差(TOLERANCE)	
X. ±.50	JXX ±.10
.X ±.20	JXXX ±.05
ANGLES ±1°	

# 深圳市连欣科技有限公司

品名 (TITLE) Pitch:1.25mm 贴片 SMT	制图 (DW) <b>XIAO</b>
料号 (DWG.NO) XDWF-0125WT-**-P	校对 (CHKD) <b>Alex</b>
比例 (SCALE) 1:1	审核 (APPD)
单位 (UNITS) mm	页码 (SHEET) 1 OF 1
尺寸 (SIZE) A4	版本 (REV) A