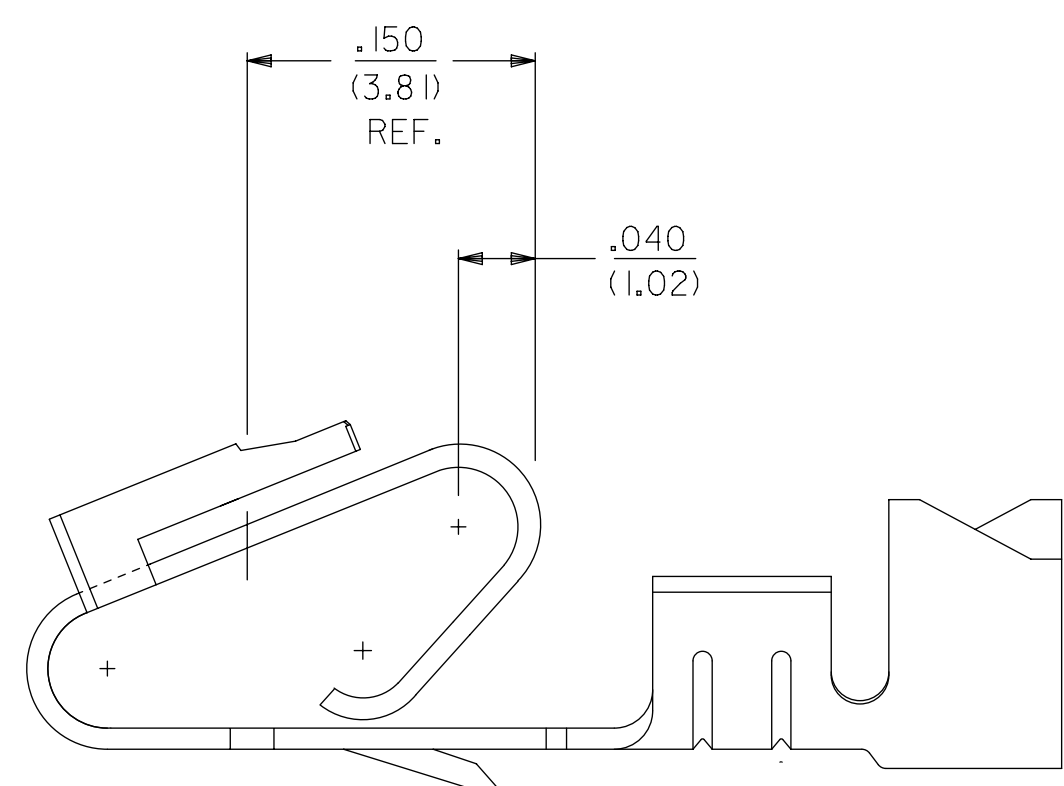
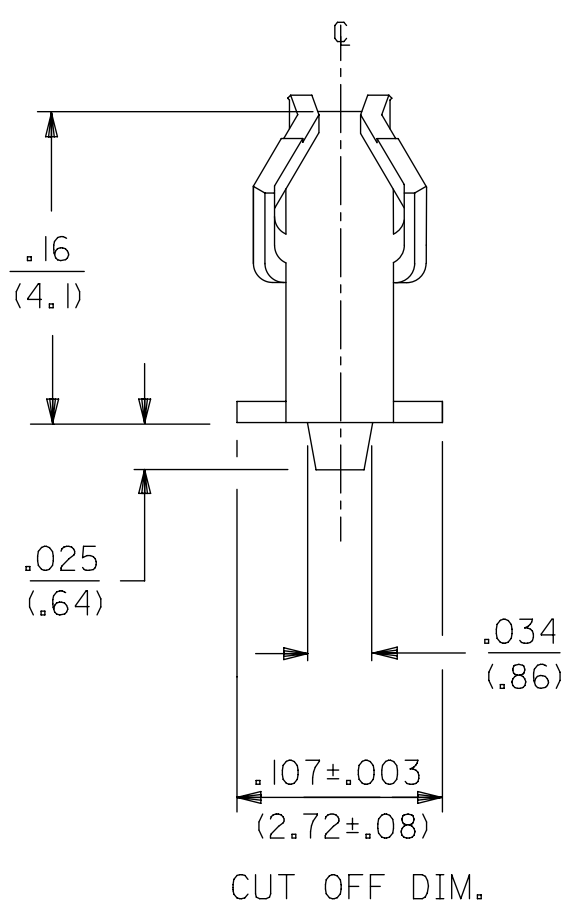


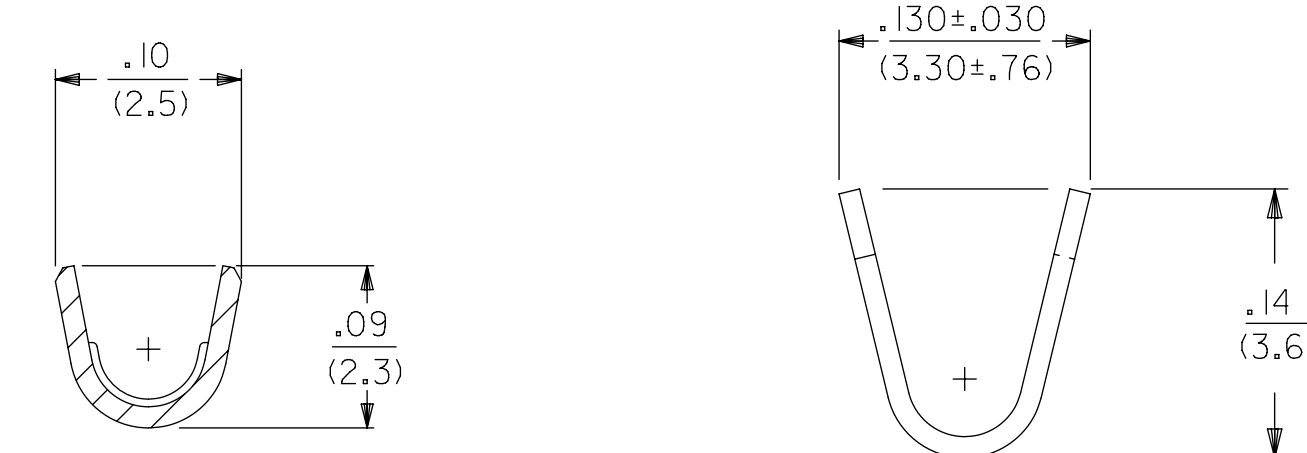
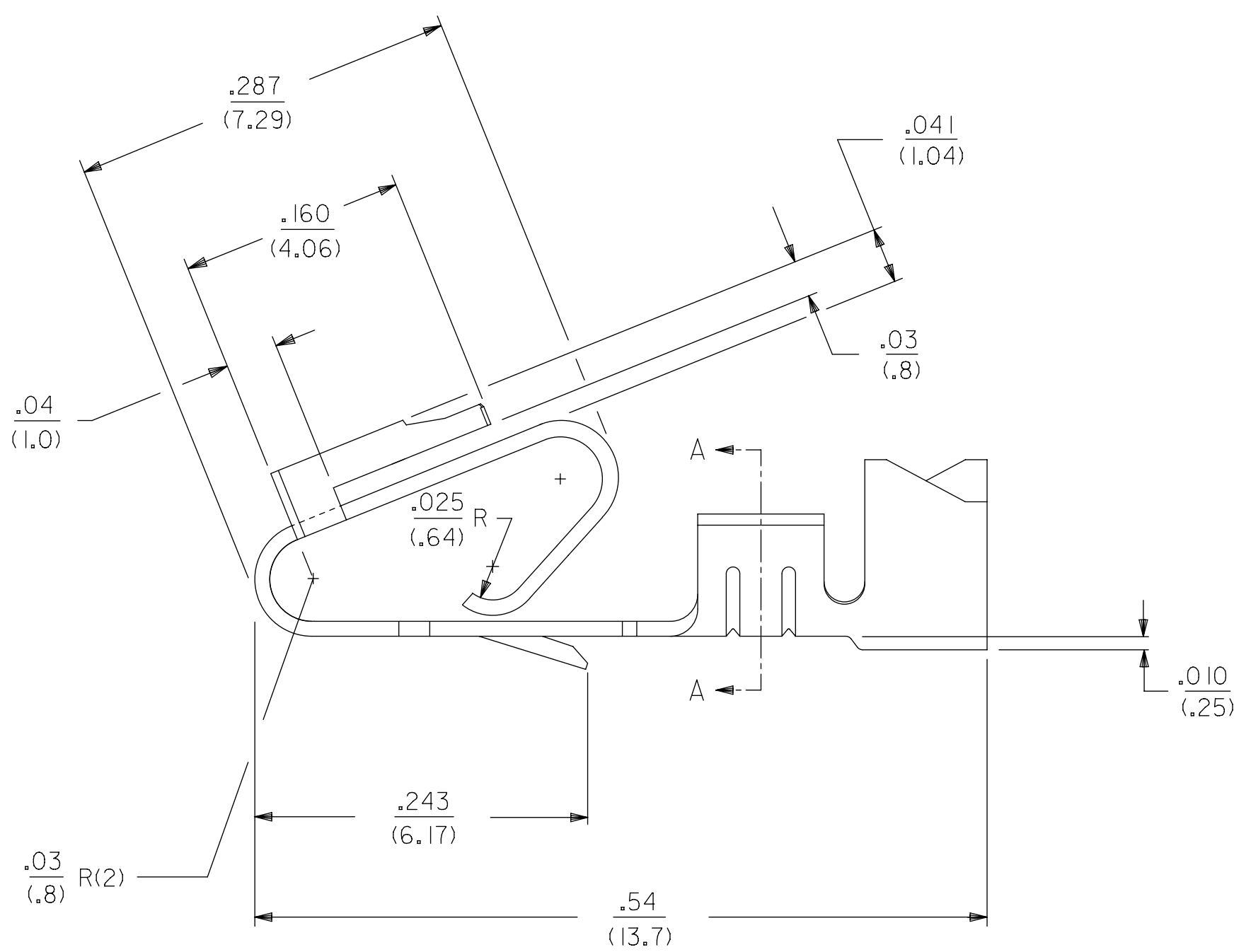
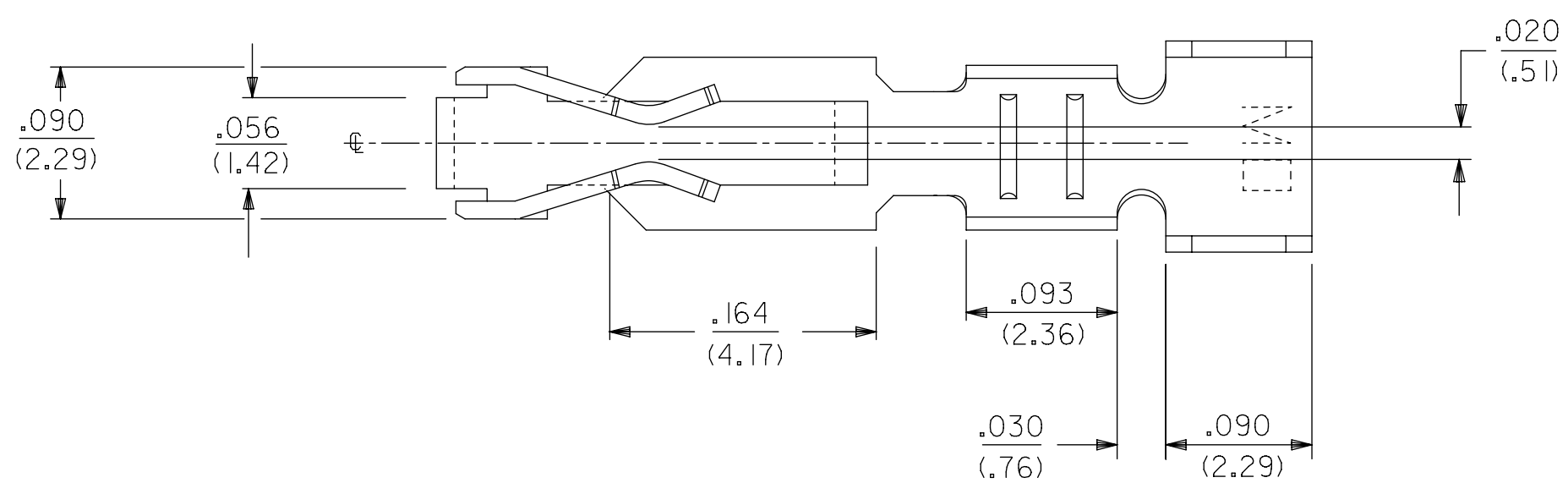
ALTERNATE GEOMETRY  
SEE NOTE 10



SELECTIVE PLATING  
LOCATION



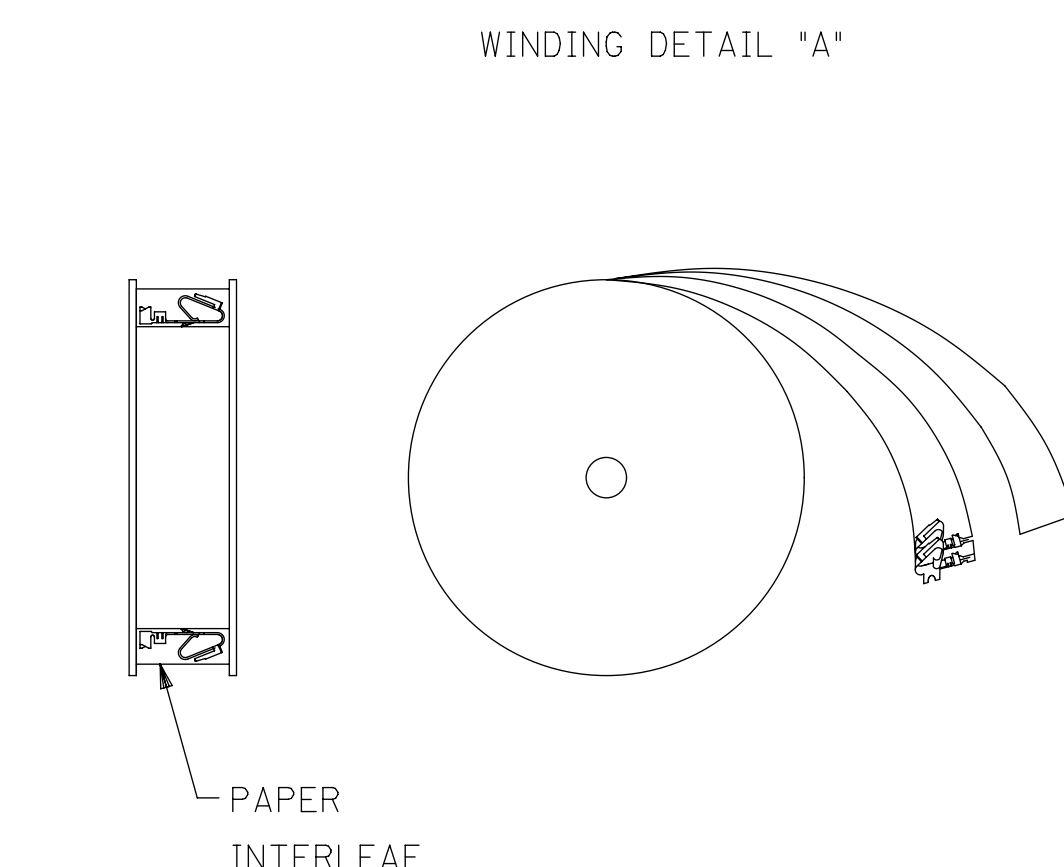
CUT OFF DIM.



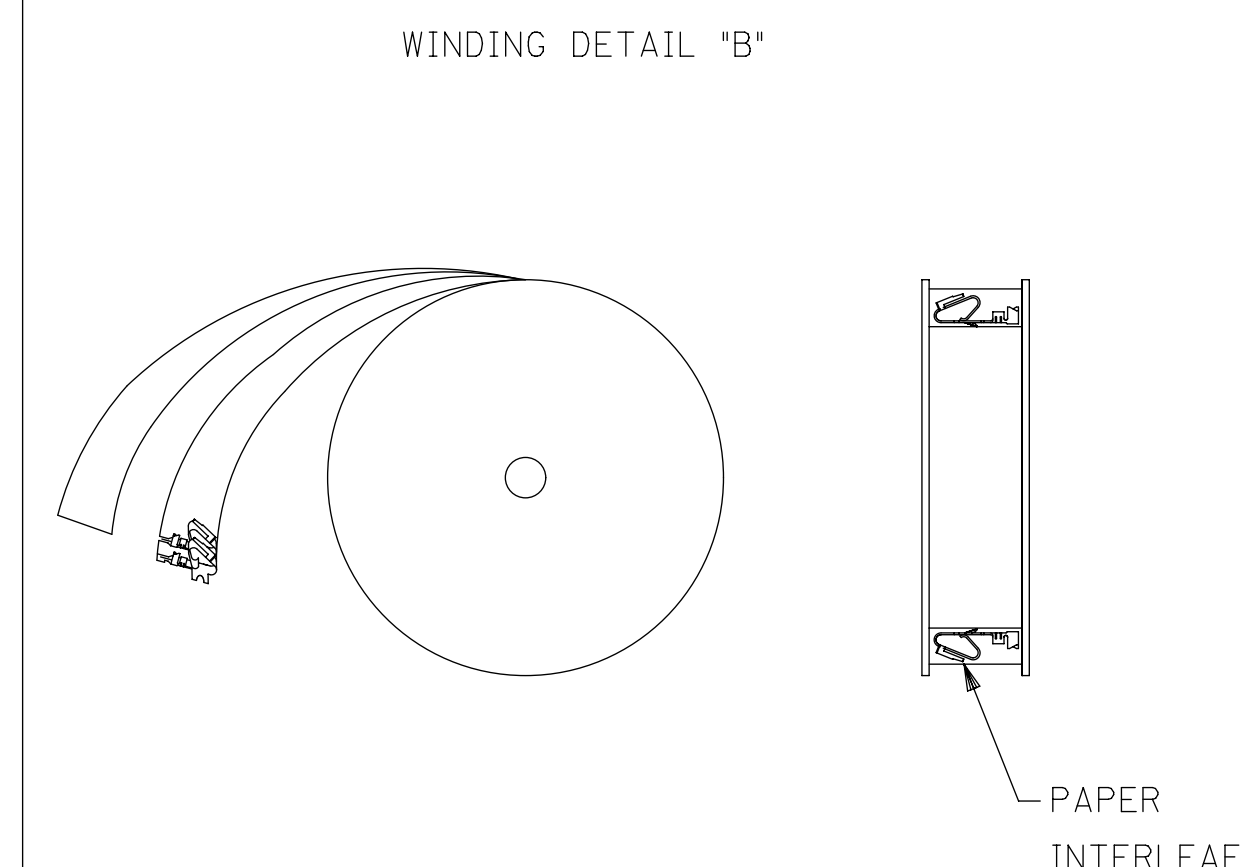
SECTION A-A

LEGEND: 6838-\*(\*)\*\*  
 WINDING  
 A= PER DETAIL A  
 BLANK= PER DETAIL B  
 FORM  
 BLANK= CHAIN  
 L= LOOSE  
 PLATING  
 SEE NOTE 2

MATERIAL:  
 (.27)/.0106 THK  
 BLANK=BRASS  
 A=PHOS BRONZE



WINDING DETAIL "A"



WINDING DETAIL "B"

SYMBOLS										THIS DRAWING CONTAINS INFORMATION THAT IS PROPRIETARY TO MOLEX ELECTRONIC TECHNOLOGIES, LLC AND SHOULD NOT BE USED WITHOUT WRITTEN PERMISSION									
= 0		IN/MM		SCALE		1:1		CURRENT REV DESC: NOTE 4 UPDATED											
= 0		GENERAL TOLERANCES (UNLESS SPECIFIED)		MM		INCH		EC NO: 605479											
= 0		4 PLACES ±		±		±		DRWN: SS06		2018/09/17		TRIFURCON TERMINAL		CRIMP TYPE, .156 CENTERS 18 TO 20 AWG WIRE					
= 0		3 PLACES ±		± 0.01		±		CHK'D: ISHWARG		2018/10/05		PRODUCT CUSTOMER DRAWING							
= 0		2 PLACES ±		0.25 ±		0.015 ±		APPR: ISHWARG		2018/10/05		DOCUMENT NUMBER		DOC TYPE DOC PART REVISION					
= 0		1 PLACE ±		0.36 ±		±		INITIAL REVISION:				SD-6838		PSD 001 AT					
= 0		0 PLACES ±		±		±		DRWN: GUZIK		1989/11/15		MATERIAL NUMBER		CUSTOMER					
= 0		ANGULAR TOL ±		0.5 °		±		APPR: LENZ		1989/11/15		SEE CHART		GENERAL MARKET					
= 0		DRAFT WHERE APPLICABLE MUST REMAIN WITHIN DIMENSIONS		THIRD ANGLE PROJECTION		DRAWING		SERIES		D-SIZE		6838		SHEET NUMBER					
= 0												1 OF 2							

- NOTES:
- MATERIAL: SEE LEGEND
  - FINISH:
    - 909 - OVERALL HOT TIN DIP: .000100/(0.00254) MIN.
    - 154 - OVERALL TIN: .000100/(0.00254) MIN. OVER .000050/(0.00127) MIN. NICKEL.
    - 555 - SELECT HARD GOLD: .000015/(0.00038) MIN. OVERALL NICKEL: .000030/(0.00076) MIN.
    - 558 - SELECT HARD GOLD: .000030/(0.00076) MIN. OVERALL NICKEL: .000050/(0.00127) MIN. OVERALL HARD GOLD FLASH: .000002/(0.00005) MIN.
    - 561 - SELECT HARD GOLD: .000030/(0.00076) MIN. OVERALL NICKEL: .000050/(0.00127) MIN.
  - PRODUCT SPECIFICATION: PS-40-02
  - PACKAGING SPECIFICATION: CHAIN FORM: SEE PK-2759-002  
LOOSE FORM: SEE PK-2759-001
  - TERMINAL FOR USE IN HOUSING SERIES 6442 AND 41695.
  - SEE 7258 SERIES FOR THIS PART WITH CRIMP FOR 22-26 AWG. WIRE.
  - CRIMP FOR 18 TO 20 GA. WIRE WITH MAX. INSULATION DIA. OF .100/(2.79), STRIP LENGTH OF .125/.100 / (3.18/2.54)
  - DIMENSIONS GIVEN ACROSS CENTERLINES ARE SYMMETRICAL ABOUT THOSE CENTERLINES WITHIN HALF THE TOTAL TOLERANCE.
  - THIS PART CONFORMS TO CLASS B REQUIREMENTS OF COSMETIC SPECIFICATION PS-45499-002.
  - ALTERNATE GEOMETRY PRESENT ON SOME PART NUMBERS. SEE SHEET 2.
  - TEXT ON PART IS FOR REFERENCE ONLY. TEXT AND TEXT LOCATION MAY VARY DEPENDING ON PART NUMBER AND/OR TOOL.

