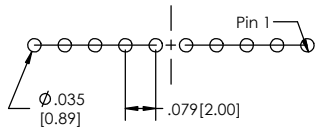
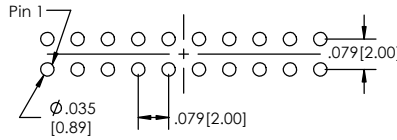


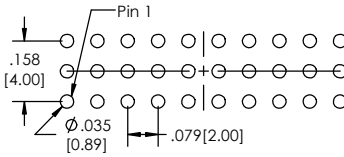
**Recommended P.C. Board Layout**  
SCALE 4:1



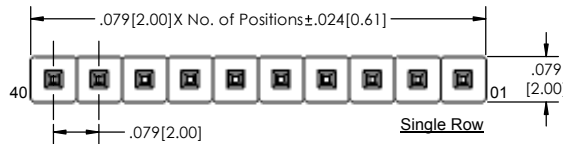
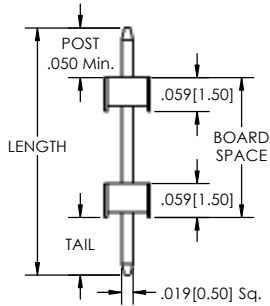
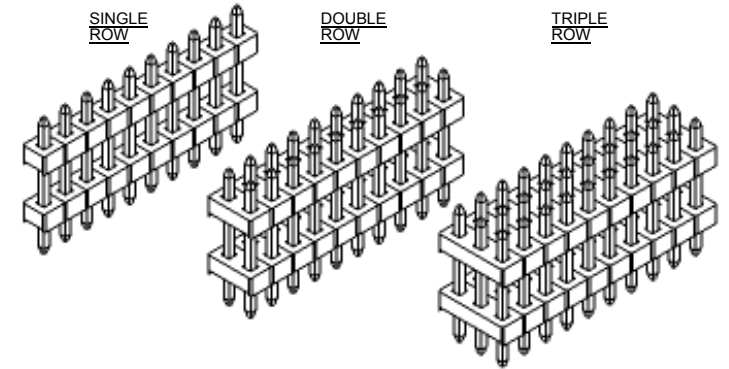
SINGLE ROW



DOUBLE ROW

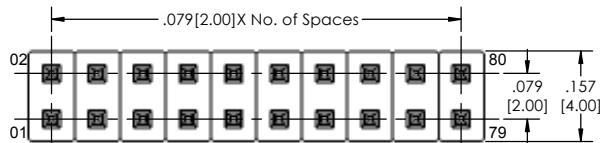
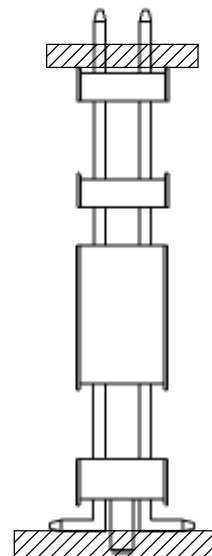


TRIPLE ROW

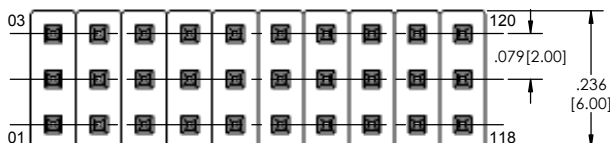


Single Row

**APPLICATION**



Double Row



Triple Row

BSTC-2 [XX] - [X] - [XXX] - [XX] - [XXX] - [XX] - [XXX] - [XX] - [XXX] - [LF]  
(A) (B) (C) (D) (E) (F) (G) (H) (I) (J)

- A. Pins Per Row - 1 through 40
- B. Row Specification - S= Single Row, D= Double Row, T= Triple Row
- C. Desired Tail Length - Please specify tail length - e.g. .100(2.54)=100
- D. Pin Options - See Pin Options below
- E. Desired Post Height - If left blank - Post(P) = Length(L) - Board Space(B) - Tail Length(T)
- F. Plating Options - See Plating Options below
- G. Desired Board Space - Please Specify required space - E.g. .100(2.54)=100 - .200(5.08) min.
- H. Lock Tight "LT" (Optional) - LT= With
- I. Polarized Position - Leave blank if not needed - If required, specify empty pin position - e.g. 012 for Pin 12
- J. Lead Free

Mates with:  
BCSS,  
BSSH,  
BSSHC,  
BSSQ,  
BSSQC,  
LSMBC,  
LSSHSM,  
SMBC,  
SSHQ,  
SSHQR,  
SSHR,  
SSHSM,  
ULSMBC.

Plating options	
G	-10µ Gold on Contact Area/ Flash on Tail
T	-Matte Tin all Over
GT	-10µ Gold on Contact Area/ Matte Tin on Tail
H	-30µ Gold on Contact Area/ Matte Tin on Tail
F	-Gold Flash over Entire Pin
FT	-Gold Flash on Contact Area/ Matte Tin on Tail

Specifications:  
Current Rating: 3.0 Ampere  
Insulation Resistance: 1000M Ohms Min.  
Dielectric Withstanding: 500V AC  
Contact Resistance: 20M Ohms Max.  
Operation Temperature: -40°C to +105°C  
Max. Process Temperature  
Peak: 260°C up to 20 secs.  
Process: 230°C up to 60 secs.  
Wave: 260°C up to 6 secs.  
Manual Solder: 350°C up to 5 secs.

Materials:  
Contact Material: Phosphor Bronze  
Insulator Material: Nylon 6T  
Plating: Au or Sn over 50µ" (1.27) Ni

Pin Options	
Length	
.255[6.48mm]	01
.323[8.20mm]	02
.377[9.58mm]	03
.397[10.08mm]	04
.417[10.59mm]	06
.456[11.58mm]	07
.555[14.10mm]	08
.535[13.59mm]	09
.575[14.61mm]	10
.594[15.09mm]	12
.614[15.60mm]	14
.673[17.09mm]	15
.713[18.11mm]	16
.733[18.62mm]	17
.752[19.10mm]	18
.830[21.08mm]	22
.871[22.12mm]	24
.950[24.13mm]	28
1.110[28.19mm]	30
1.170[29.37mm]	36

\* N/A With .180 Tail  
Post + Board Space + Tail must not exceed Overall Length

Tails may be clipped to achieve specific dimensions.  
Products cut to specific sizes are uncancelable/ nonreturnable.  
Parts are subject to change without notice.



PROPRIETARY AND CONFIDENTIAL  
THE INFORMATION CONTAINED IN THIS DRAWING IS THE SOLE PROPERTY OF Major League Electronics. ANY REPRODUCTION IN PART OR AS A WHOLE WITHOUT THE WRITTEN PERMISSION OF Major League Electronics IS PROHIBITED.

UNLESS OTHERWISE SPECIFIED:		NAME DATE		
DIMENSIONS ARE IN INCHES		DRAWN EOW	01/28/14	
TOLERANCES:		CHECKED GWE	01/28/14	
ONE DECIMALS ±.100		ENG APPR.		
TWO DECIMAL ±.100		MFG APPR.		
THREE DECIMAL ±.005		ADDRESS:		
FOUR DECIMAL ±.002		2533 Centennial Blvd. Jeffersonville, IN 47130 Phone: 812-670-4174 Fax: 812-670-4175 E-Mail: mle@mlelectronics.com		
NEXT ASSY USED ON		TITLE: BSTC-2 SERIES		
APPLICATION DO NOT SCALE DRAWING		SIZE DWG. NO. REV		
		C B		
		SCALE 6:1 SHEET 1 OF 1		