

# Product data sheet

Specifications



## pressure switch XMLB - 350 mbar - adjustable scale 2 thresholds - 1 C/O

XMLBL35R2S12EX

! Discontinued on: 08 December 2022

! Discontinued

### Main

Range of product	Telemecanique Pressure sensors XM
Pressure sensor type	Electromechanical pressure sensor
Product specific application	ATEX D
Pressure sensor name	XMLB
Electrical circuit type	Control circuit
Pressure switch type of operation	Regulation between 2 thresholds
Scale type	Adjustable differential
Pressure rating	0.35 bar
Local display	With
Fluid connection type	G 1/4 (female) conforming to ISO 228
Adjustable range of switching point on falling pressure	0.003...0.3 bar
Adjustable range of switching point on rising pressure	0.045...0.35 bar
Possible differential maximum at high setting	0.3 bar
Maximum permissible accidental pressure	2.25 bar
Destruction pressure	4.5 bar
Pressure actuator	Diaphragm
Controlled fluid	Air (0...70 °C) Hydraulic oil (0...70 °C)
Materials in contact with fluid	FPM, FKM Steel Stainless steel
Enclosure material	Zinc alloy

### Complementary

Maximum permissible pressure - per cycle	1.25 bar
Cable entry number	1 tapped entry for M20 x 1.5 cable gland (included)

<b>Terminal block type</b>	4 terminals
<b>Repeat accuracy</b>	2 %
<b>Auxiliary contacts operation</b>	Snap action
<b>Contacts material</b>	Silver contacts
<b>Mechanical durability</b>	4000000 cycles
<b>Setting</b>	External
<b>Terminals description ISO n°1</b>	(13-14-11-12)OF
<b>Height</b>	162 mm
<b>Depth</b>	110 mm
<b>Width</b>	110 mm

## Environment

<b>Standards</b>	EN/IEC 60079-0 EN/IEC 60079-31
<b>Directives</b>	2014/34/EU - ATEX directive
<b>Product certifications</b>	INERIS 04ATEX0058 IEC-Ex INE 17.0019
<b>Marking</b>	II2 D-Ex tb IIIC T85°C Db IP66
<b>Protective treatment</b>	TC
<b>Ambient air temperature for operation</b>	-20...60 °C
<b>Operating position</b>	Any position

## Packing Units

<b>Unit Type of Package 1</b>	PCE
<b>Number of Units in Package 1</b>	1
<b>Package 1 Height</b>	16.0 cm
<b>Package 1 Width</b>	15.5 cm
<b>Package 1 Length</b>	15.5 cm
<b>Package 1 Weight</b>	2.567 kg

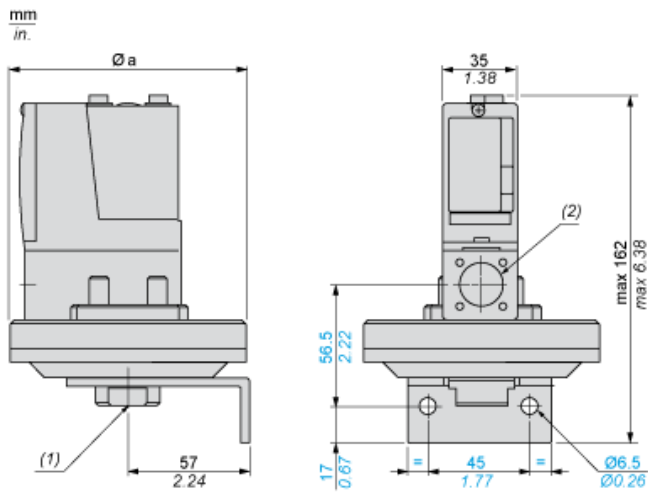
## Offer Sustainability

<b>Sustainable offer status</b>	Green Premium product
<b>REACH Regulation</b>	<a href="#">REACH Declaration</a>
<b>EU RoHS Directive</b>	Pro-active compliance (Product out of EU RoHS legal scope)
<b>Mercury free</b>	Yes
<b>RoHS exemption information</b>	<a href="#">Yes</a>
<b>Environmental Disclosure</b>	<a href="#">Product Environmental Profile</a>
<b>Circularity Profile</b>	No need of specific recycling operations
<b>California proposition 65</b>	WARNING: This product can expose you to chemicals including: Diisononyl phthalate (DINP), which is known to the State of California to cause cancer, and Di-isodecyl phthalate (DIDP), which is known to the State of California to cause birth defects or other reproductive harm. For more information go to <a href="http://www.P65Warnings.ca.gov">www.P65Warnings.ca.gov</a>

## Contractual warranty

<b>Warranty</b>	18 months
-----------------	-----------

Dimensions



$\varnothing a =$  110 mm / 4.33 in.

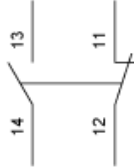
(1) 1 fluid entry, tapped G1/4 (BSP female)

(2) 1 electrical connections entry, tapped M20 x 1.5

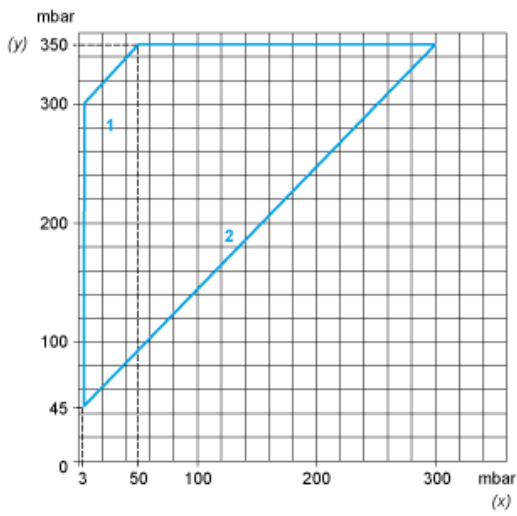
**Wiring Diagram**

---

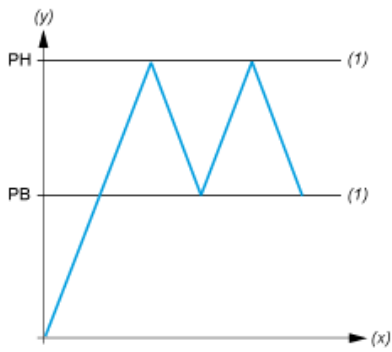
**Terminal Model**



**Operating Curves**



- (y) Rising pressure
- (x) Falling pressure
- 1 : Maximum differential
- 2 : Minimum differential



- (y) Pressure
- (x) Time
- (1) Adjustable value
- PH : High point
- PB : Below point

**Recommended replacement(s)**