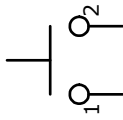
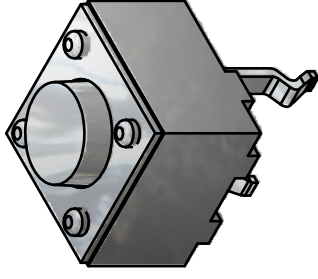


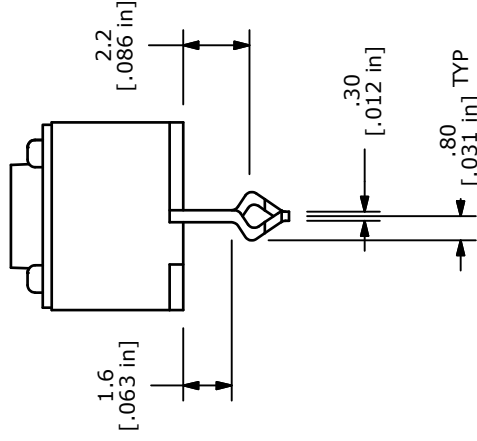
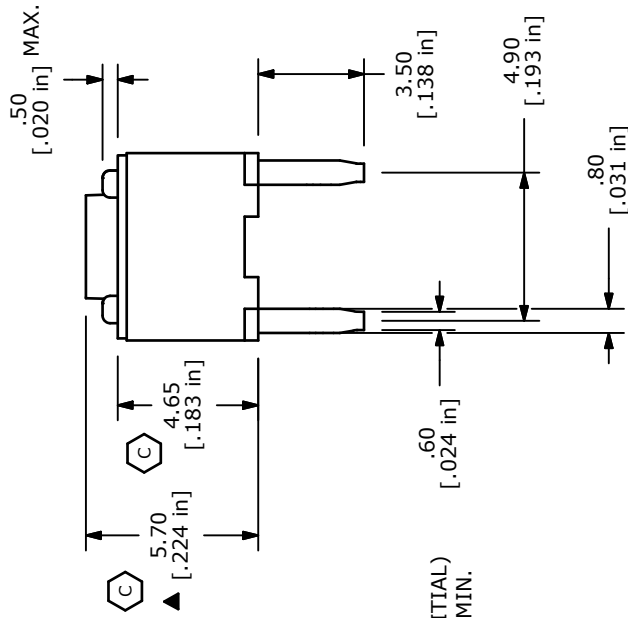
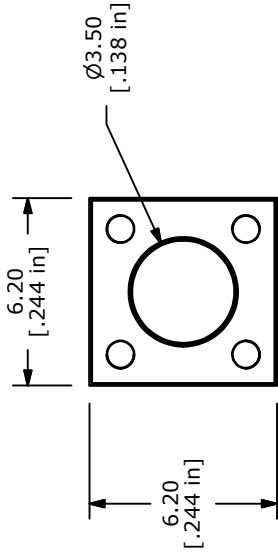
RECOMMENDED PCB LAYOUT



▲ CIRCUIT: SPST



ISOMETRIC



- NOTES:
1. ALL DIMENSIONS IN MM
 2. GENERAL TOLERANCE: X.X=±0.4
X.XX=±0.25
 3. TERM. NOS. FOR REFERENCE ONLY.
 4. RATING: 30VDC, 50mA
 5. OPERATING FORCE: 70 ± 20 gms
 6. TRAVEL: 0.35mm +/-0.2mm
 7. CONTACT RESISTANCE: 100 MILLI OHMS MAX. (INITIAL)
 8. MECHANICAL/ELECTRICAL LIFE 1,000,000 CYCLES MIN.
 9. OPERATING TEMPERATURE: -25C to +85C.
 10. INSULATION RESISTANCE: 100M OHMS.
 11. DIELECTRIC STRENGTH: 600VAC, 1MINUTE.
 12. 2002/95/EC (ROHS) COMPLIANT
 13. PACKAGING: BULK
 14. ▲ DENOTES CRITICAL PARAMETER

		E-SWITCH®			
		TITLE TL1150AF070Q			
C	19538	CHANGE DIMS was 5.75 & 4.9	12/20/10	BGL	
B	16736	ADDED .5 DIM AND FIXED 1.6 DIM	12/7/06	TN	
A	16674	RELEASED FOR PRODUCTION	11/17/06	TN	
REV	PCR NO	DESCRIPTION	DATE	BY	
THE INFORMATION CONTAINED IN THIS DOCUMENT IS PROPRIETARY TO E-SWITCH AND IS NOT TO BE COPIED OR TRANSFERRED					
		SCALE 4:1	DATE 12/7/2006	DR TN	DWG Q970065
					REV C