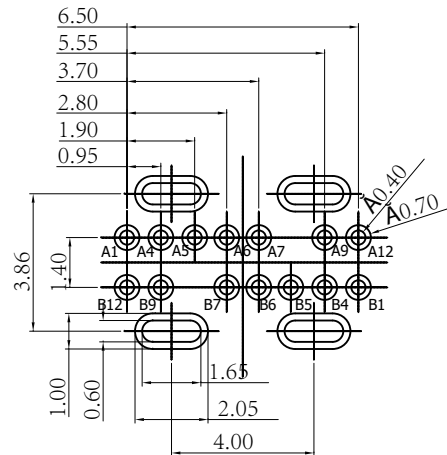
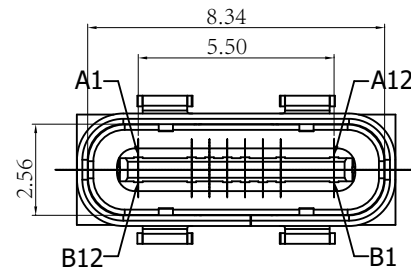
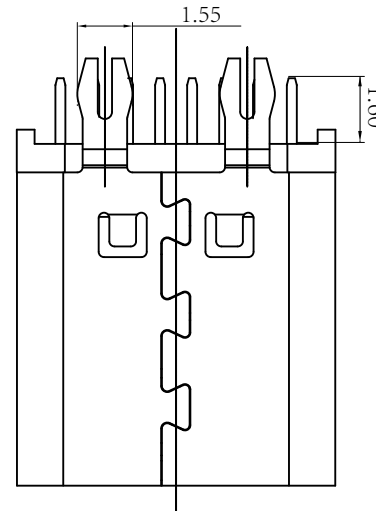
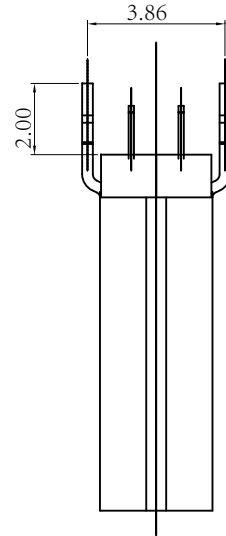
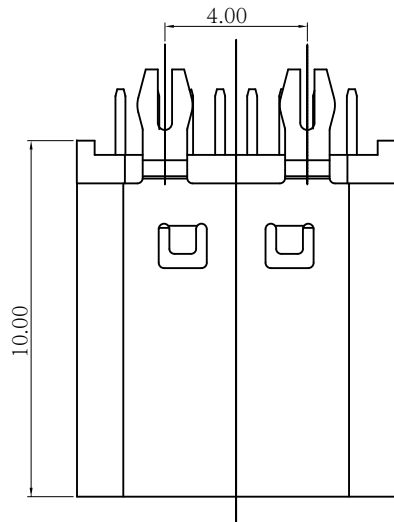
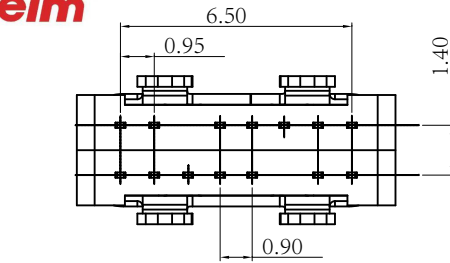


Kinghelm®

REV	DESCRIPTION	DATE	APPROVED
A/0	新版发行	2020.06.06	xiao



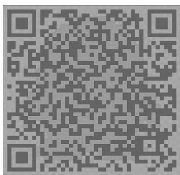
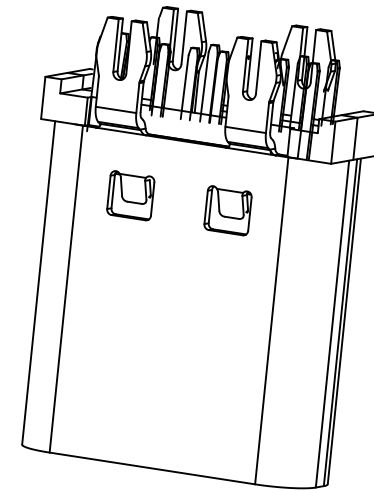
备注:

1. 材质:

- 1.1 胶芯: LCP+30%G.F UL94V-0
- 1.2 端子: 高导铜, T=0.15mm; 半金亮锡 1 μ "
- 1.3 外壳: SUS304, T=0.30mm; 镀镍 80 μ " MIN.
- 1.4 钢片: SUS301, T=0.15mm;

2. 主要特性:

- 2.1 额定电流: 5.0A
- 2.2 接触阻抗: 40MILLTOHMS MAX
- 2.3 绝缘阻抗: 150V DC/100 MEGA OHMS MIN
- 2.4 耐压测试: 100V AC/ 1MA MAX
- 2.5 沾锡性: 温度 250±5℃, 时间 5±0.5s
- 2.6 插入力: 5~20N 2. 拨出力: 8~20N
使用寿命: 10000次、拨出力 5N MIN
- 2.7 盐雾测试: 通过24H盐水盐雾无生锈现象
- 2.8 工作温度: -30℃~+80℃



技术详询

TOLERANCES		深圳市金航标电子有限公司		www.kinghelm.com.cn	
. X	±0.30	KH-TYPE-C-L10-14P		0755-28190160	
. XX	±0.20				
. XXX	±0.10				
ANGLES ±2.00°		APPROVED: TZ120		TITLE: TYPE-C 14P 180度立插 L=10.0	
		CHECKED: TZ101		PART NO.:	
		DRAWING: TZ125		PROJECTION:	
REV.:	A/0	SIZE:	A4	UNIT:	M M
				SCALE:	1:1
				SHEET: 1/1	