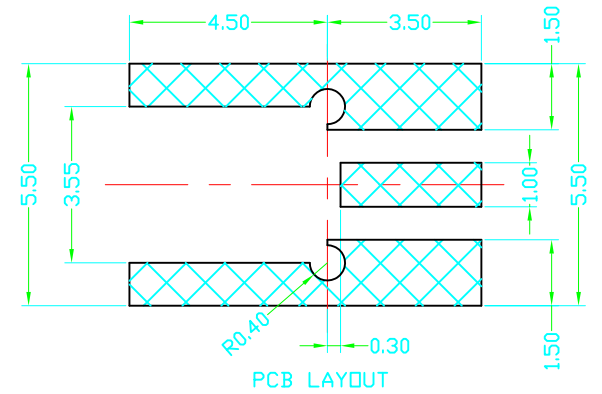
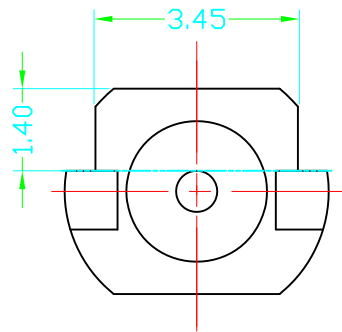
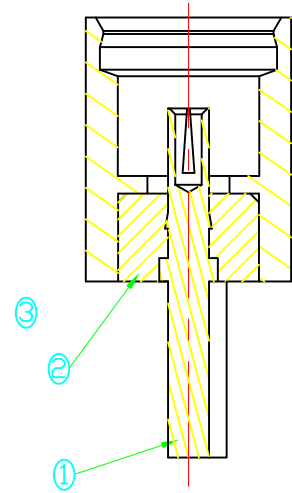
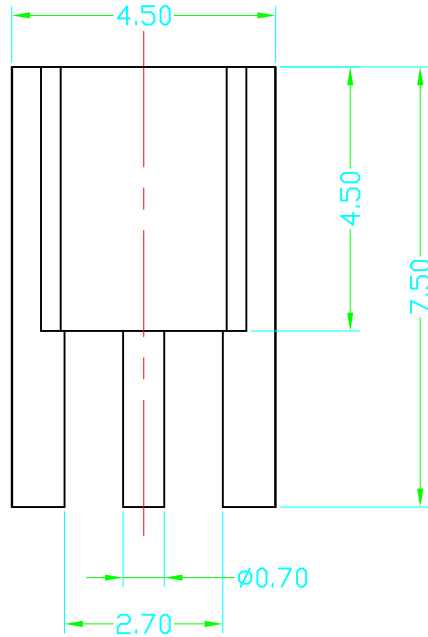
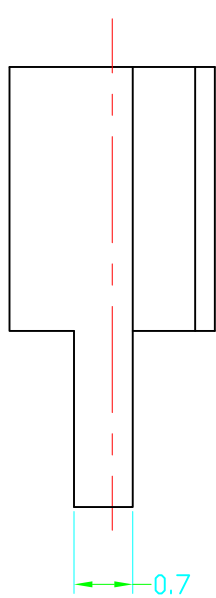
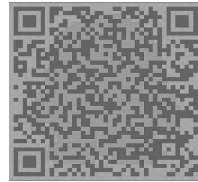


SIGN	DATE	DESCRIPTION	APPROVER
△			
△			
△			



3	MMX-MB-C750G	MMCX本體	黃銅, 鍍金Fu"	1
2	MMX-PT-1524	MMCX絕緣體	PTFE(白)	1
1	MMX-FP-600G	MMCX母針	磷青銅, 鍍金Fu"	1
序號	料號	名稱	材料	數量


技术详询



深圳市金航标电子有限公司			www.kinghelm.com.cn	
型号: KH-MMCX-PBS			0755-83044319	
TITLE: MMCX 母頭母針(破板式)				
PART NO.: MMX005-ZG8JNPCB			DWG NAME: MMX005-ZG8JNPCB	
APPROVED BY	CHECKED BY	DESIGNED BY		Tolerance
			UNITS: mm	X.X ±0.1
			SCALE: 1/1	X.XX ±0.05
		2023.08.23	REVISION: A	X° ±1°

Product Number: MMX005-ZG8JNPCB
 Product Name: MMCX Coaxial Connector

1. Specification

Sample Photo	
	
A. Electrical Characteristics	
Frequency	DC~6GHz
Impedance	50 Ohm
S.W.R.	Straight \leq 1.3 Right Angle \leq 1.5
Insertion Loss	\leq 0.1 dB / GHz
Voltage (breakdown)	\geq 500V
Insulation Resistance	\geq 500 M ohm
Center Conductor Contact Resistance	\leq 25 m ohm
Outer Conductor Contact Resistance	\leq 15 m ohm
B. Material & Mechanical Characteristics	
Material of Conductor	Brass (Cu)
Pull Test (Retention)	\geq 27 Kg (27N) for Plug Type
Pull-Separation Force	1~2 Kg (10 ~ 20 N) for Plug Type
Mating Cycles	$>$ 500
C. Environmental	
Operation Temperature	- 40 °C ~ + 65 °C
Storage Temperature	- 40 °C ~ + 80 °C