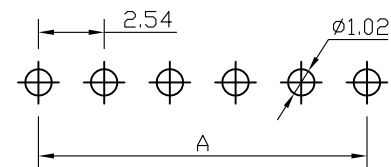
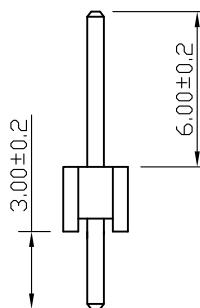
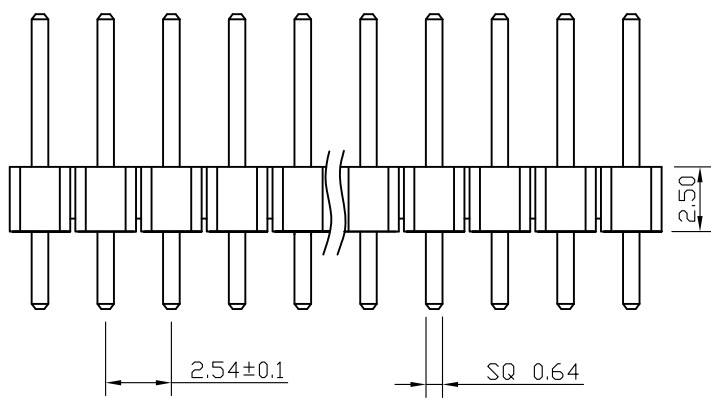
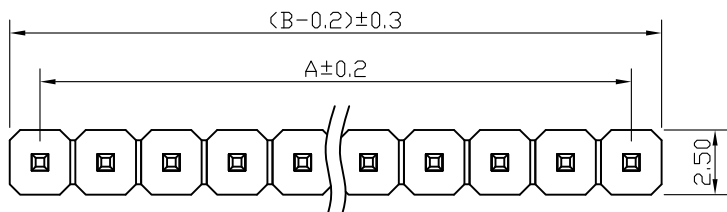


Kinghelm®



RECOMMEND P. C. B LAYOUT
PCB TOLERANCE: ±0.05 (TOP VIEW)

SPECIFICATIONS

Current Rating: 3Amps
 Insulation Resistance: 1000MΩ Min
 Contact Resistance: 20mΩ Max
 Withstanding Voltage: AC 1000V
 Operation Temperature: -40° to +105°
 Contact Material: Brass
 Standard: PA6T
 Insulator Material: Polyester (UL 94V-0)
 Contact Plating: Gold Flash
 Max. Processing Temp: 240° C for 30-60 seconds
 (260° C for 5 seconds)

Vol tage rating: 250V AC/DC

深圳市金航标电子有限公司

www.kinghelm.com.cn

KH-2.54PH180-1X24P-L11.5

0755-28190160

UNLESS OTHERWISE SPECIFIED TOLERANCE

X : ±0.30 X° : ±5°
 X.X : ±0.25 X.X° : ±1°
 X.XX : ±0.20 X.XX° : ±0.5°

DRAWN NAME:

2.54PH H2.5 1xnPin 180度 PC3.0 PA6.0 PB2.5 L11.5 6T

SIZE	A4	SCALE	N:1	PROUCT NO.
REV	A	UNIT	mm	PROJECT
				PAGE 1/1

CHECKED: 陈超凡 2022/04/24

CHECKED:

APPROVED:

KH- **PH** - *X**P-L**

① ② ③ ④ ⑤

1. 产品间距
2. 产品角度
3. 并排数量
4. PIN数量
5. 产品高度