

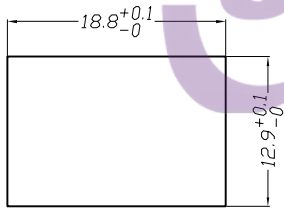
1. 按键开关型号 PUSH SWITCH MODEL NO. MPS21-WWBAB-S1-R
2. 快插端子类型 QUICK CONNECTOR TYPE;
单刀单掷 SINGLE POLE SINGLE THROW
3. 额定值 RATING: 16A 125/250VAC 3/4HP 125/250VAC(CUL)
16(4)A 125/250V~ T125/55(ENEC17;NEMKO;CB)
16(4)A 250~ T125/55(CQC)

C-UL APPROVAL FILE NO.E153399
 ENEC17 CERTIFICATE NO.3689
 NEMKO CERTIFICATE NO.P10213218/A2
 CQC CERTIFICATE NO.CQC10002051908
 CB APPROVAL FILE NO.60225/A1/M1

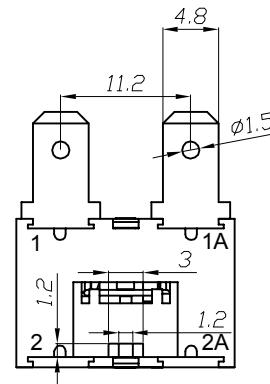
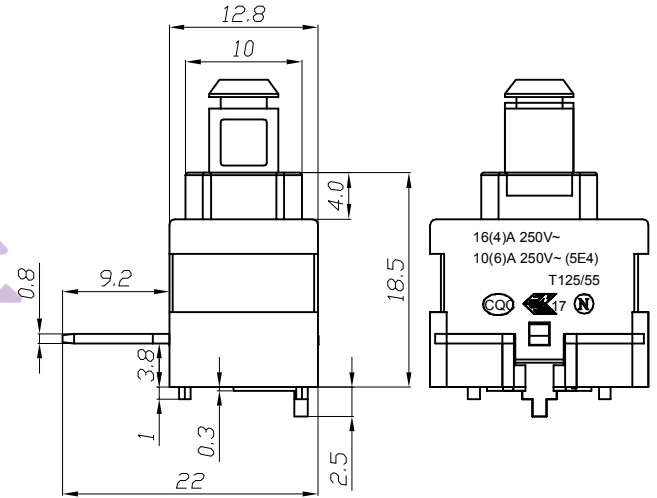
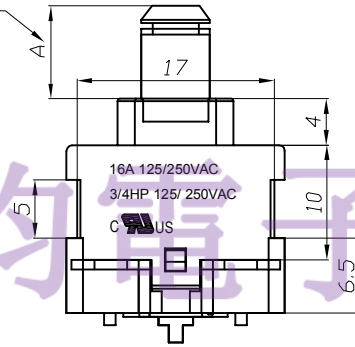
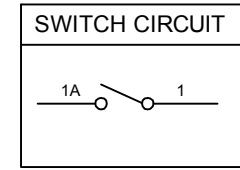
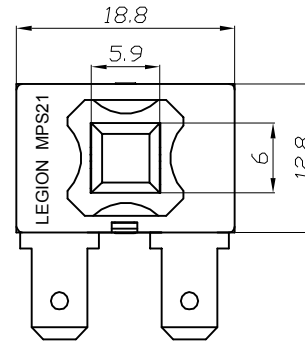
4. 柄的颜色 ACTUATOR COLOR: WHITE
基座的颜色 HOUSING COLOR: WHITE
外壳的颜色 BASE COLOR: BLACK
5. 所有部件均使用环保材料
ALL MATERIALS ARE ROHS COMPLIANT

TEL: 0769-82310511-867

PANEL CUTOUT DIMENSION:



WHEN THE SWITCH IS ON THE "ON" STATE,
 DIMENSION A IS 5.0 mm, AND THE "OFF"
 STATE, DIMENSION A IS 8.0 mm



修正 REVISION	說明 DESCRIPTION	修訂者 REVISED BY	SPECIFICATION				公差 TOLERANCES		TOLERANCES UNLESS OTHERWISE SPEC.±0.5/0.02,ANG.±3		
			製圖 DRAWN BY	設計 DESIGNED BY	校對 CHECKED BY	核准 APPROVED BY	單位 UNIT	mm	機種名稱 MODEL NAME	PUSH SW	機種編號 MODEL NO.
第四次							比例 SCALE	1/1	六鈞電子五金有限公司 LEGION ELECTRONIC & HARDWARE CO., LTD		
第三次		日期 DATE					2015-07-23				
第二次											
第一次											