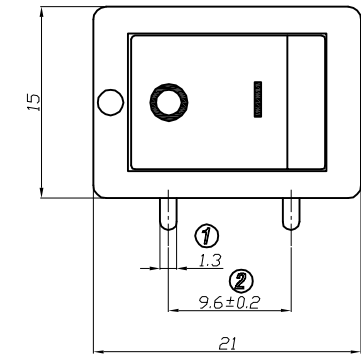
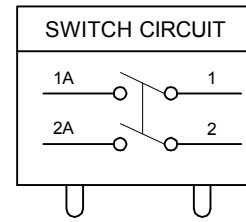
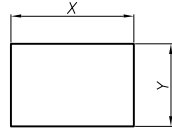


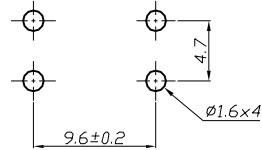
1. 跷板开关型号 ROCKER SWITCH MODEL NO.SS21-BBTWA2-R
2. PCB端子 PCB CONNECTOR TYPE
3. 额定值 RATING:10A 125/250VAC(C-UL)
12(4)A 250V~T85/55(ENEC17;NEMKO;CQC)
4. 柄的颜色 ACTUATOR COLOR:BLACK
5. 基座的颜色 HOUSING COLOR: BLACK
6. 柄的印字形式 ACTUATOR PRINTING:" 6 "白色 WHITE COLOR
7. 所有部件均使用环保材料
ALL MATERIALS USING MEET THE RoHS DIRECTIVE



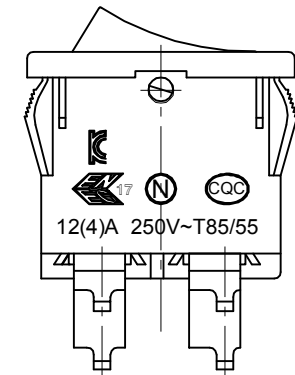
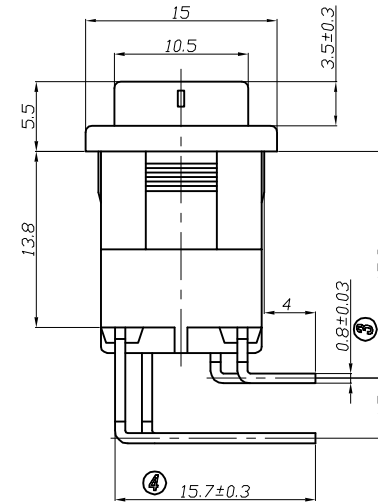
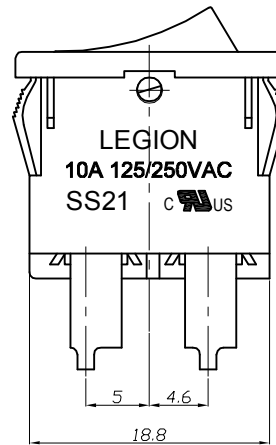
PANEL CUTOUT DIMENSION



PCB MOUNTING HOLE ARRANGEMENT



PANEL THICKNESS	X	Y
0.75~1.25mm	19.2 ⁺⁰ _{-0.1} mm	12.9 ^{+0.1} ₋₀ mm
1.25~2.0mm	19.4 ⁺⁰ _{-0.1} mm	12.9 ^{+0.1} ₋₀ mm
2.0~3.0mm	19.8 ⁺⁰ _{-0.1} mm	12.9 ^{+0.1} ₋₀ mm



NO	DESCRIPTION	NO	DESCRIPTION	DIMENSIONAL TOLERANCES		APPROVED	CHECKED	DESIGN	DRAWN	ALL SIZE ARE IN		DRAWING NO.	REV.
				RANGE	TOLERANCE					MM	NO		
				X	±0.30				LMC	MATERIAL NO.			
				X.X	±0.20				2019.05.20				
				X.XX	±0.10								
				ANGLES	±1°	LECLION ELECTRONIC & HARDWARE CO., LTD.							
										SS21-BBTWA2-R		WIF121043	A0