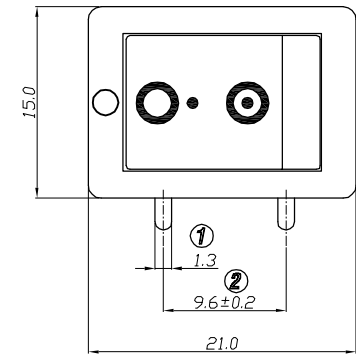
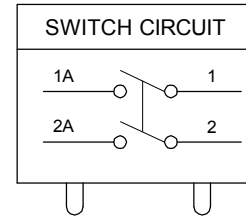
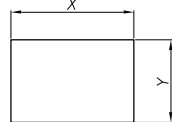


1. 电路 CIRCUIT:ON/OFF
2. 额定值 RATING:10A 125/250VAC(UL;C-UL)
12(4)A 250V~T85/55(ENEC17;NEMKO;CQC;KC)
3. 接触电阻 CONTACT RESISTANCE : <50mΩ
4. 绝缘阻抗 INSULATION RESISTANCE : >100MΩ
(500VDC BETWEEN OPEN CONTACTS)
5. 耐电压 DIELECTRIC STRENGTH : >1500VAC 0.5mA 1 MINTUTE
6. 所有部件均使用环保材料
ALL MATERIALS USING MEET THE RoHS DIRECTIVE

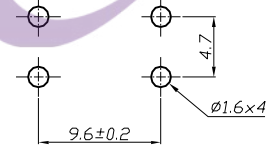
TEL: 0769-82310511-867



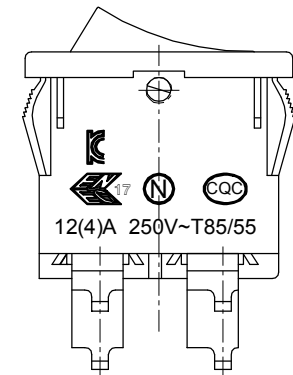
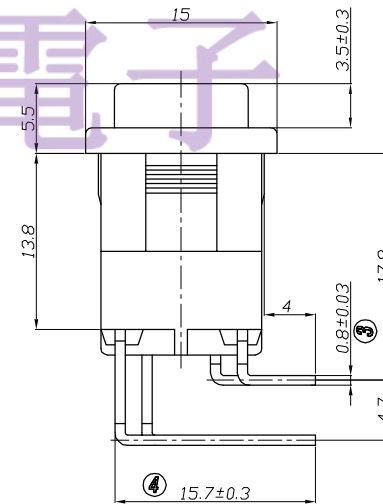
PANEL CUTOUT DIMENSION



PCB MOUNTING HOLE ARRANGEMENT



PANEL THICKNESS	X	Y
0.75~1.25mm	19.2 ⁺⁰ _{-0.1} mm	12.9 ^{+0.1} ₋₀ mm
1.25~2.0mm	19.4 ⁺⁰ _{-0.1} mm	12.9 ^{+0.1} ₋₀ mm
2.0~3.0mm	19.8 ⁺⁰ _{-0.1} mm	12.9 ^{+0.1} ₋₀ mm



NO	DESCRIPTION	NO	DESCRIPTION	DIMENSIONAL TOLERANCES		APPROVED	CHECKED	DESIGN	DRAWN	ALL SIZE ARE IN		DRAWING NO.	REV.
				RANGE	TOLERANCE					MM	NO		
				X	±0.30				LMC				
				X.X	±0.20				2019.05.20				
				X.XX	±0.10								
				ANGLES	±1°	LEGION ELECTRONIC & HARDWARE CO., LTD.				SS21-BB08WA2-R	WIF122031	A0	

