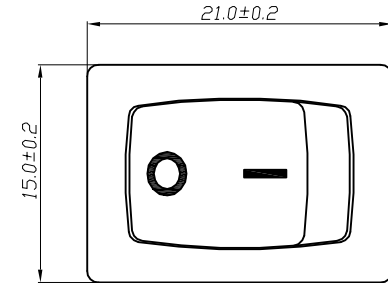
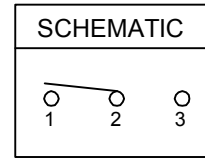
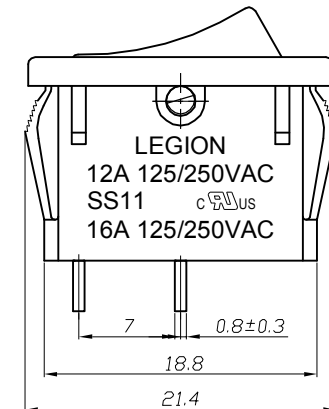
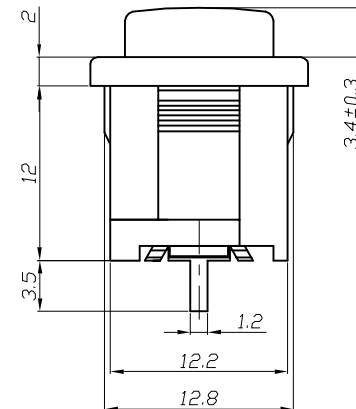
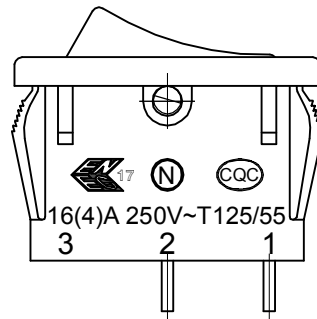
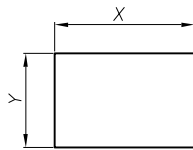


1. 电路CIRCUIT: ON/OFF;
2. 快插端子 QUICK CONNECTOR TYPE;
单刀单掷 (SINGLE POLE DOUBLE THROW);
3. 额定值 RATING: 16A 125/250VAC (UL;C-UL);
12A 125/250VAC (UL;C-UL);
16(4)A 250V~T125/55 (ENEC17;NEMKO;CQC;CB)
4. 接触电阻 CONTACT RESISTANCE: <50mΩ
5. 绝缘阻抗 INSULATION RESISTANCE: >100MΩ
(500VDC BETWEEN OPEN CONTACTS)
6. 耐电压 DIELECTRIC STRENGTH: >1500VAC 0.5mA 1 MINTUTE
7. 所有部件均使用环保材料
ALL MATERIALS USING MEET THE RoHS DIRECTIVE



PANEL CUTOUT DIMENSION



PANEL THICKNESS	X	Y
0.8~1.2mm	19.2 ⁺⁰ _{-0.1} mm	12.9 ^{+0.1} ₋₀ mm
1.3~2.0mm	19.4 ⁺⁰ _{-0.1} mm	12.9 ^{+0.1} ₋₀ mm
2.1~2.5mm	19.8 ⁺⁰ _{-0.1} mm	12.9 ^{+0.1} ₋₀ mm

NO	DESCRIPTION	NO	DESCRIPTION	DIMENSIONAL TOLERANCES		APPROVED	CHECKED	DESIGN	DRAWN	ALL SIZE ARE IN		DRAWING NO.	REV.
				RANGE	TOLERANCE					MM	NO		
5	→	10	→	X	±0.30	LMC 2020.11.14				SCALE	***	SS11-BBIWC-R20-R	*****
4	→	9	→	X.X	±0.20					MATERIAL NO.			
3	→	8	→	X.XX	±0.10								
2	→	7	→	ANGLES	±1°								
1	→	6	→										
LEGION ELECTRONIC & HARDWARE CO., LTD.												A0	