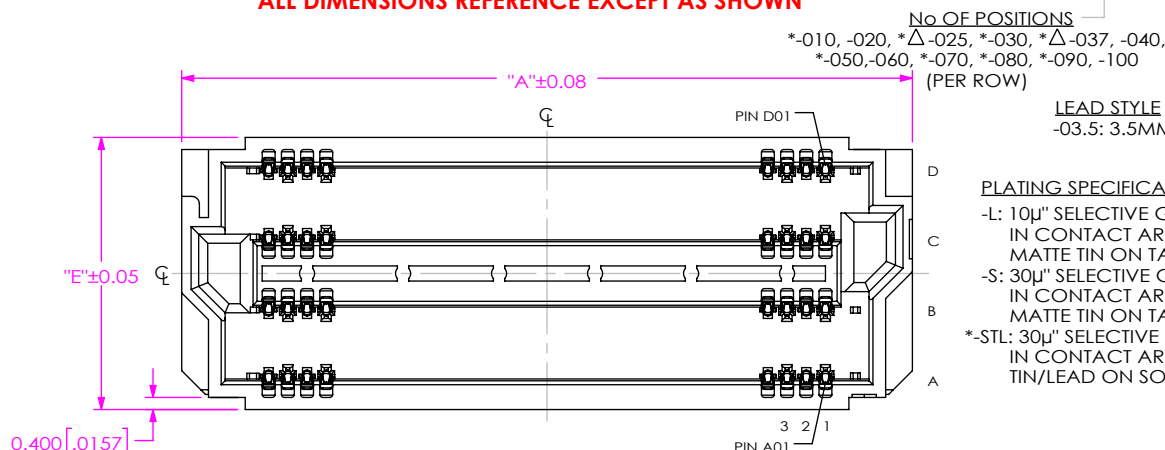


**DESIGNED AND DIMENSIONED IN MILLIMETERS[INCHES]
ALL DIMENSIONS REFERENCE EXCEPT AS SHOWN**

APF6-XXX-XX.X-XXX-XX-X-X-XR

DO NOT SCALE FROM THIS PRINT



PLATING SPECIFICATION
-L: 10μ" SELECTIVE GOLD IN CONTACT AREA, MATTE TIN ON TAIL
-S: 30μ" SELECTIVE GOLD IN CONTACT AREA, MATTE TIN ON TAIL
*STL: 30μ" SELECTIVE GOLD IN CONTACT AREA, TIN/LEAD ON SOLDER TAIL.

TAPE & REEL
(SEE NOTES 3 & 7)
-TR: TAPE & REEL
-FR: FULL QTY TAPE AND REEL

OPTION
BLANK: NO ALIGNMENT PIN
-A: ALIGNMENT PIN (SEE SHT 4, FIG 3)
*-L: SQUEEZE LATCH (SEE SHT 3, FIG 5, NOT AVAILABLE WITH -A OPTION, ONLY AVAILABLE IN -04 & -06 ROW)
*-T: LOCKING TOOL (SEE SHT 3, FIG 6, NOT AVAILABLE WITH -A OPTION, ONLY AVAILABLE IN -04 & -06 ROW)

SOLDERBALL COMPOSITION
*-1: 63.0% TIN/37.0% LEAD
*-2: 95.5% TIN/3.8% SILVER/0.7% COPPER

ROW
-04: 4 ROW
*-06: 6 ROW
*☒-08: 8 ROW
*-10: 10 ROW
*☐-16: 16 ROW

(* = NOT TOOLED)
(PACKAGING: TAPE & REEL, SEE NOTES 1, 2 & 3)
(☐ = ONLY AVAILABLE IN -50 POS)
(☒ = ONLY AVAILABLE IN -100 POS)
(Δ = ONLY AVAILABLE IN -L & -T OPTION)

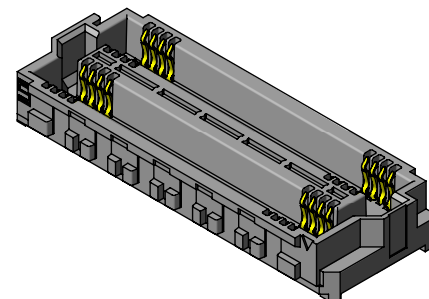
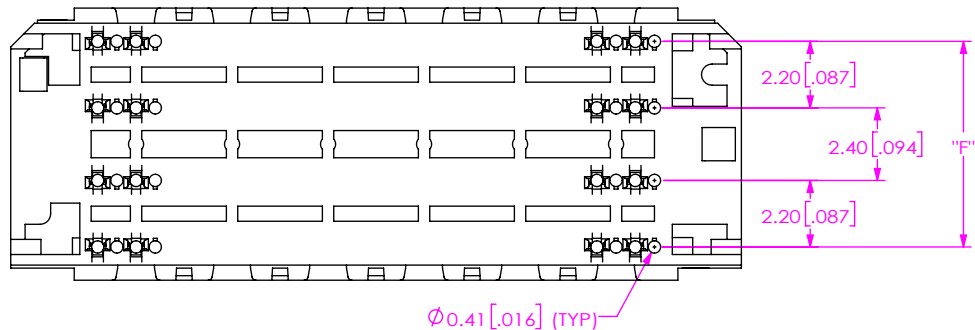
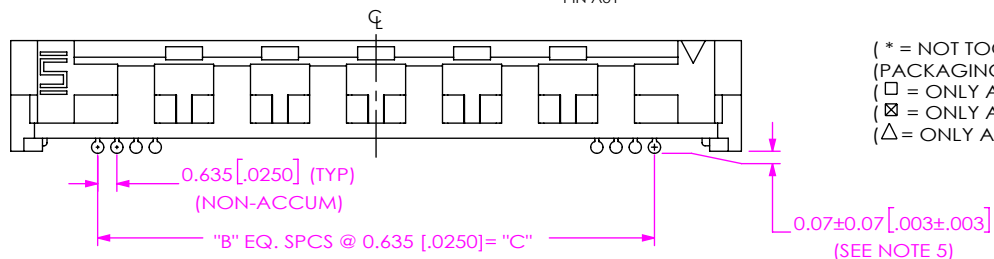
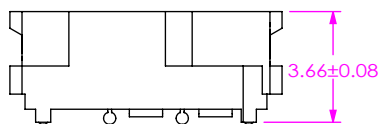


TABLE 2

No OF POS PER ROW	"A"	"B"	"C"
-010	11.47 [0.451]	9	5.72 [0.225]
-020	17.82 [0.701]	19	12.07 [0.475]
-030	24.17 [0.951]	29	18.42 [0.725]
-040	30.52 [1.201]	39	24.77 [0.975]
-050	36.87 [1.451]	49	31.12 [1.225]
-060	43.22 [1.701]	59	37.47 [1.475]
-070	49.57 [1.951]	69	43.82 [1.725]
-080	55.92 [2.201]	79	50.17 [1.975]
-090	62.27 [2.451]	89	56.52 [2.225]
-100	68.62 [2.701]	99	62.87 [2.475]

TABLE 4

No. OF ROWS	"E"	"F"
-04	9.00 [0.354]	6.80 [0.268]
-06	13.60 [0.535]	11.40 [0.449]
-08	18.20 [0.717]	16.00 [0.630]
-10	22.80 [0.898]	20.60 [0.811]
-16	36.60 [1.441]	34.40 [1.354]

TABLE 1

STACK HEIGHT		
APF6 LEAD STYLE	APM6 LEAD STYLE	
	-01.5	-06.5
-03.5	5.00 [0.197]	10.00 [0.394]

FIG 1
APF6-030-03.5-XXX-04-X SHOWN
(SOME CENTER FEATURES REMOVED FOR CLARITY)

NOTES:

1. TAPE & REEL IS STANDARD PACKAGING.
2. NOTE DELETED.
3. ATTACH LABEL-4X2 TO EACH TAPE & REEL PACKAGE.
4. K-DOT PROVIDED AS STANDARD.
5. MEASURE BOTH OUTSIDE ROWS ONLY.
6. SEE SHEET 3 FOR PROCESSING INFORMATION.
7. ORDERS WILL BE PACKAGED ACCORDING TO THE SAMTEC PACKAGING EFFICIENCY STANDARDS (SPES) FOUND ON WWW.SAMTEC.COM

PROPRIETARY NOTE
THIS DOCUMENT CONTAINS CONFIDENTIAL AND PROPRIETARY INFORMATION AND ALL DESIGN, MANUFACTURING, REPRODUCTION, USE, PATENT RIGHTS AND SALES RIGHTS ARE EXPRESSLY RESERVED BY SAMTEC, INC. THIS DOCUMENT SHALL NOT BE DISCLOSED, IN WHOLE OR PART, TO ANY UNAUTHORIZED PERSON OR ENTITY NOR REPRODUCED, TRANSFERRED OR INCORPORATED IN ANY OTHER PROJECT IN ANY MANNER WITHOUT THE EXPRESS WRITTEN CONSENT OF SAMTEC, INC.

DO NOT SCALE DRAWING
SHEET SCALE: 4:1

MATERIAL:
INSULATOR: LCP, COLOR: BLACK
CONTACT: COPPER ALLOY

samtec
520 PARK EAST BLVD, NEW ALBANY, IN 47150
PHONE: 812-944-6733 FAX: 812-948-5047
e-Mail info@SAMTEC.com code 55322

DESCRIPTION:
APF6 0.635MM SOCKET ARRAY ASSEMBLY

DWG. NO.
APF6-XXX-XX.X-XXX-XX-X-X-XR

BY: B BLESSING 5/26/2018 SHEET 1 OF 4

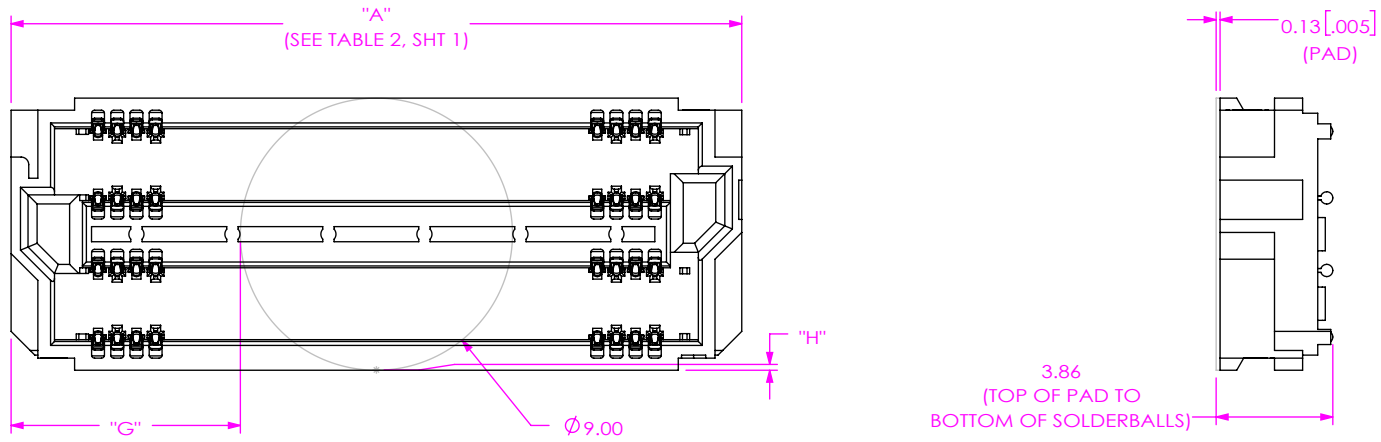


FIG 2
 POLYIMIDE PAD
 APF6-030-03.5-XXX-04-X SHOWN
 (SOME CENTER FEATURES REMOVED FOR CLARITY)

TABLE 5													
-No. OF ROWS	"G"												"H"
	-010	-020	-025	-030	-037	-040	-050	-060	-070	-080	-090	-100	
-04													0.00 [0.000]
-06													2.30 [0.091]
-08	1.23 [0.049]	4.41 [0.174]	6.70 [0.264]	7.58 [0.299]	10.51 [0.414]	10.76 [0.424]	13.93 [0.549]	17.11 [0.674]	20.28 [0.799]	23.46 [0.924]	26.63 [1.049]	29.81 [1.174]	4.60 [0.181]
-10													6.90 [0.272]
-16													13.80 [0.543]

PROPRIETARY NOTE
 THIS DOCUMENT CONTAINS CONFIDENTIAL AND PROPRIETARY INFORMATION AND ALL DESIGN, MANUFACTURING, REPRODUCTION, USE, PATENT RIGHTS AND SALES RIGHTS ARE EXPRESSLY RESERVED BY SAMTEC, INC. THIS DOCUMENT SHALL NOT BE DISCLOSED, IN WHOLE OR PART, TO ANY UNAUTHORIZED PERSON OR ENTITY NOR REPRODUCED, TRANSFERRED OR INCORPORATED IN ANY OTHER PROJECT IN ANY MANNER WITHOUT THE EXPRESS WRITTEN CONSENT OF SAMTEC, INC.

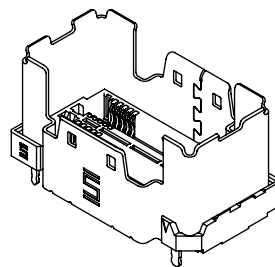
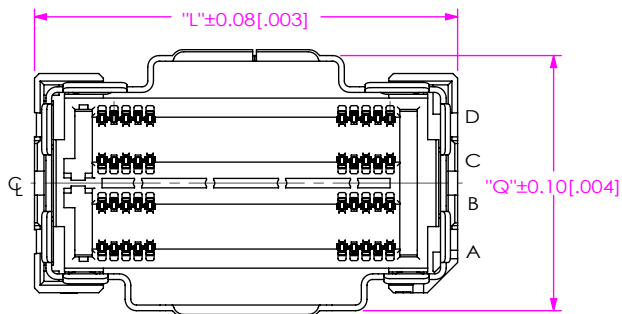


520 PARK EAST BLVD, NEW ALBANY, IN 47150
 PHONE: 812-944-6733 FAX: 812-948-5047
 e-Mail info@SAMTEC.com code 55322

DO NOT SCALE DRAWING
 SHEET SCALE: 4:1

DESCRIPTION:
 APF6 0.635MM SOCKET ARRAY ASSEMBLY
 DWG. NO.
APF6-XXX-XX.X-XXX-XX-X-X-XR

BY: B BLESSING 5/26/2018 SHEET 2 OF 4



No OF POS	"L"	"M"	"N"	"P"
-025	22.39 [.881]	24	15.24 [.600]	17.59 [.693]
-037	30.01 [1.181]	36	22.86 [.900]	25.21 [.993]

-No. OF ROWS	"Q"	"R"	"S"
-04	13.50 [.531]	9.90 [.390]	11.60 [.457]
-06	18.10 [.713]	14.50 [.571]	16.20 [.638]

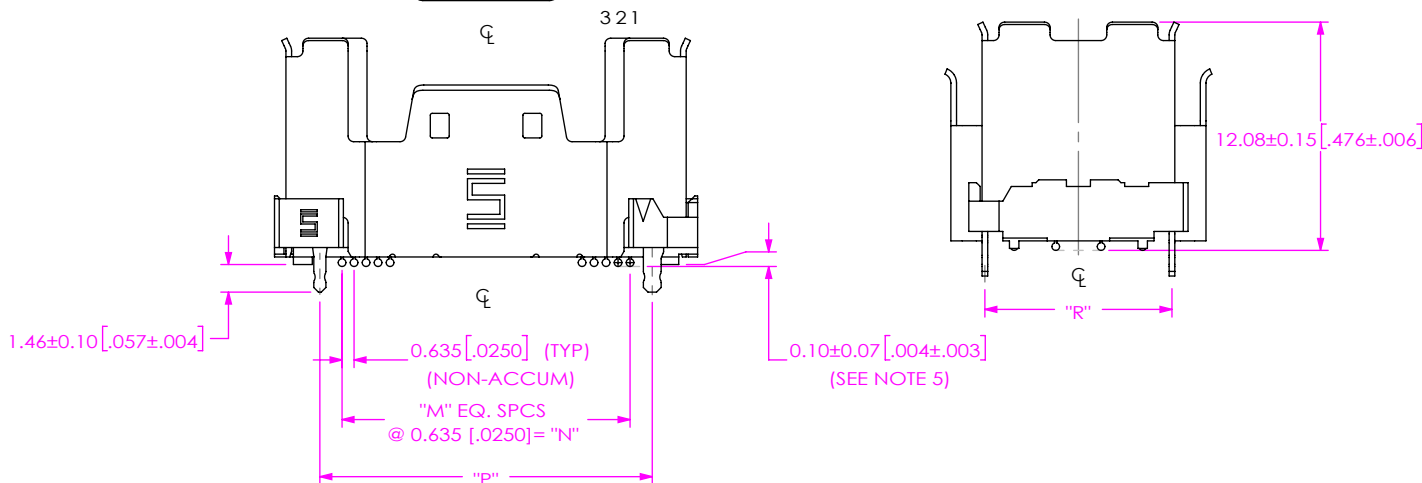


FIG 5
 -L: SQUEEZE LATCH
 APF6-025-03.5-XXX-04-X-L SHOWN
 (SAME AS FIG 1, EXCEPT AS SHOWN)
 (SOME CENTER FEATURES REMOVED FOR CLARITY)

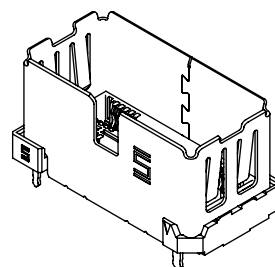
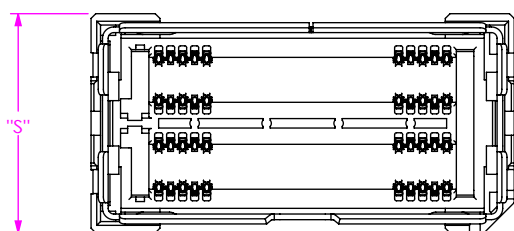
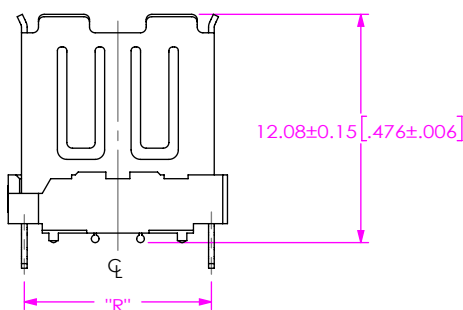
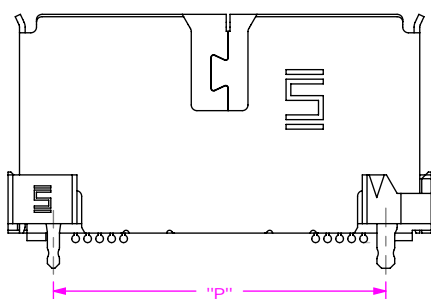


FIG 6
 -T: LOCKING TOOL
 APF6-025-03.5-XXX-04-X-T SHOWN
 (SAME AS FIG 1 & FIG5, EXCEPT AS SHOWN)
 (SOME CENTER FEATURES REMOVED FOR CLARITY)



<p>PROPRIETARY NOTE</p> <p>THIS DOCUMENT CONTAINS CONFIDENTIAL AND PROPRIETARY INFORMATION AND ALL DESIGN, MANUFACTURING, REPRODUCTION, USE, PATENT RIGHTS AND SALES RIGHTS ARE EXPRESSLY RESERVED BY SAMTEC, INC. THIS DOCUMENT SHALL NOT BE DISCLOSED, IN WHOLE OR PART, TO ANY UNAUTHORIZED PERSON OR ENTITY NOR REPRODUCED, TRANSFERRED OR INCORPORATED IN ANY OTHER PROJECT IN ANY MANNER WITHOUT THE EXPRESS WRITTEN CONSENT OF SAMTEC, INC.</p>		
	<p>520 PARK EAST BLVD, NEW ALBANY, IN 47150 PHONE: 812-944-6733 FAX: 812-948-5047 e-Mail: info@SAMTEC.com code 55322</p>	
<p>SHEET SCALE: 5:2</p>	<p>DESCRIPTION: APF6 0.635MM SOCKET ARRAY ASSEMBLY</p>	
	<p>DWG. NO. APF6-XXX-XX.X-XXX-XX-X-X-XR</p>	
	<p>BY: B BLESSING</p>	<p>5/26/2018 SHEET 3 OF 4</p>

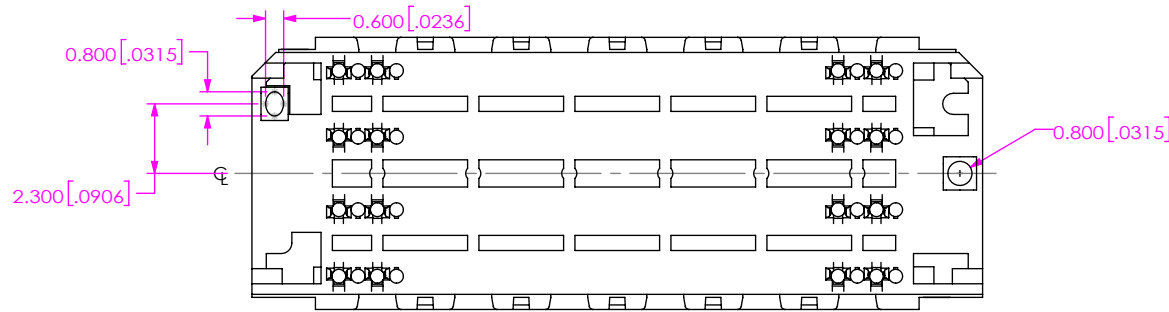
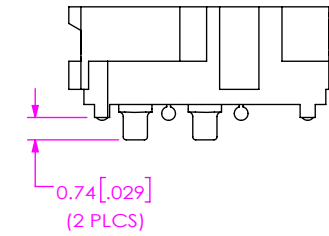
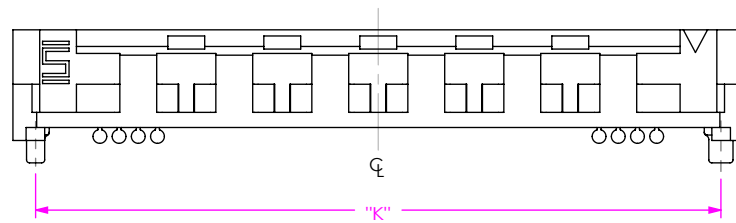


FIG 3
 -A: ALIGNMENT PIN
 APF6-030-03.5-XXX-04-X-A SHOWN
 (SAME AS FIG 1, EXCEPT AS SHOWN)
 (SOME CENTER FEATURES REMOVED FOR CLARITY)

No OF POS PER ROW	"K"
-010	9.97 [0.392]
-020	16.32 [0.642]
-030	22.67 [0.892]
-040	29.02 [1.142]
-050	35.37 [1.392]
-060	41.72 [1.642]
-070	48.07 [1.892]
-080	54.42 [2.142]
-090	60.77 [2.392]
-100	67.12 [2.642]

PART NUMBER	POSITIONS	ROW
CAT-APF6-100-04-VT	-100	-04
CAT-APF6-100-08-VT	-100	-08

CAT-APF6-XXX-XX-VT
 PROCESSING FIXTURE
 (SEE TABLE 8)

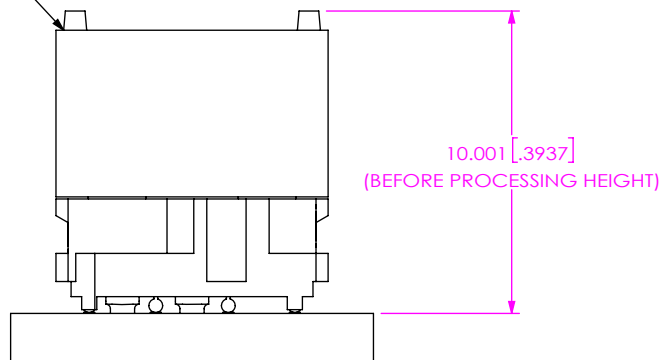


FIG 4
 APF6-100-03.5-XXX-XX-X PROCESSING VIEW
 (CAT-APF6-XXX-XX-VT)

NOTE:
 FIG 4 DIMENSION 10.001 (TOP OF PCB TO TOP OF PROCESSING FIXTURE) INDICATES CONNECTOR/FIXTURE HEIGHT ON PCB TO GUARANTEE ENOUGH REFLOW OVEN WORKING SPACE, DIMENSION 10.001, PCB THICKNESS AND THE HEIGHT OF THE COMPONENTS ON THE OTHER SIDE OF THE BOARD NEED TO BE CONSIDERED.

<p>PROPRIETARY NOTE</p> <p>THIS DOCUMENT CONTAINS CONFIDENTIAL AND PROPRIETARY INFORMATION AND ALL DESIGN, MANUFACTURING, REPRODUCTION, USE, PATENT RIGHTS AND SALES RIGHTS ARE EXPRESSLY RESERVED BY SAMTEC, INC. THIS DOCUMENT SHALL NOT BE DISCLOSED, IN WHOLE OR PART, TO ANY UNAUTHORIZED PERSON OR ENTITY NOR REPRODUCED, TRANSFERRED OR INCORPORATED IN ANY OTHER PROJECT IN ANY MANNER WITHOUT THE EXPRESS WRITTEN CONSENT OF SAMTEC, INC.</p>	 520 PARK EAST BLVD, NEW ALBANY, IN 47150 PHONE: 812-944-6733 FAX: 812-948-5047 e-Mail info@SAMTEC.com code 55322	
	DESCRIPTION: APF6 0.635MM SOCKET ARRAY ASSEMBLY	
	DWG. NO. APF6-XXX-XX.X-XXX-XX-X-X-XR	BY: B BLESSING 5/26/2018 SHEET 4 OF 4