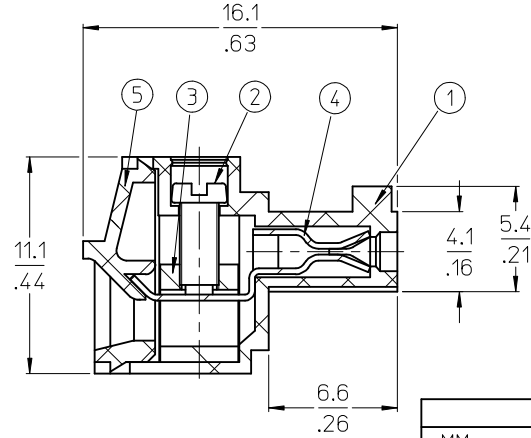
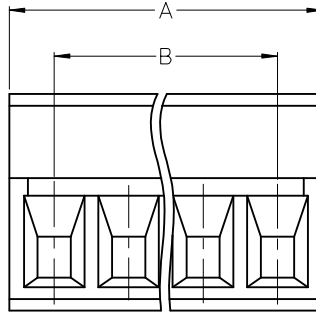
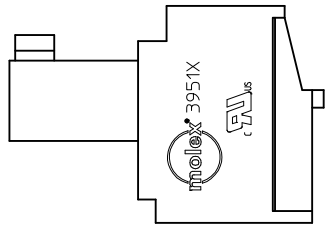
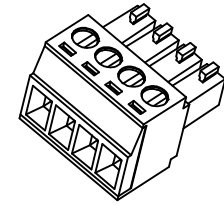
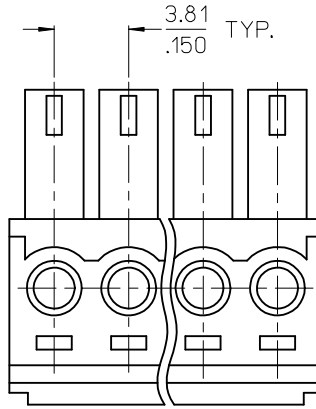


10 9 8 7 6 5 4 3 2 1



SPECIFICATIONS:

1. MATERIAL:

- (1). BODY: NYLON 66 (PA 66, UL94V-0).
- (2). SCREW: STEEL.
- (3). CAGE (*): BRASS
- (4). TERMINAL: PHOSPHOR BRONZE (C)
- (5). COVER: NYLON 66 (PA 66, UL94V-0).

2. PRODUCT SPECIFICATION: PS-39500-001.

3. WIRE RANGE: 30 - 16AWG.

4. TORQUE: 2 in-lbs.

5. WIRE STRIP LENGTH: 6.50/256.

6. NUMBER OF CIRCUIT POSITIONS AVAILABLE = 2 THROUGH 20.

7. ASSEMBLY IS ROHS COMPLIANT BY EXEMPTION.

COMPONENTS MARKED WITH AN ASTERISK (*) ARE ROHS COMPLIANT BY EXEMPTION, ALL OTHERS ARE ROHS COMPLIANT.

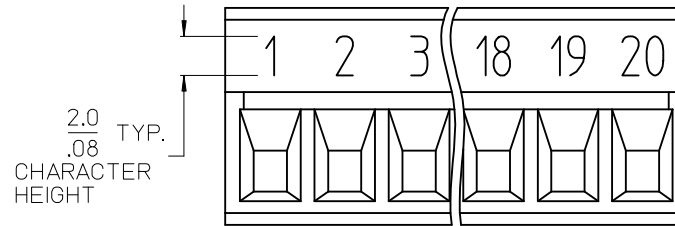
TOLERANCES			
MM	TOL	INCH	TOL
0-6	±0.25	0-.24	±.010
>6-30	±0.40	.24-1.18	±.016
>30-120	±0.50	1.18-4.76	±.020
>120	±0.80	>4.76	±.031

REVISED DOC. TOL EC NO: IPG2017-0881 DRAWN: ANAGATH 2017/03/23 CHKD: APPR: BRUPERT 2017/04/18 REV DESCRIPTION	QUALITY SYMBOLS	GENERAL TOLERANCES (UNLESS SPECIFIED)	DIMENSION STYLE	SCALE	DESIGN UNITS	THIRD ANGLE PROJECTION	
	▼=0 ▽=0	mm INCH 4 PLACES ±--- ±--- 3 PLACES ±--- ±--- 2 PLACES ±--- ±--- 1 PLACE ±--- ±--- ANGULAR ±---°	MM/IN	DRAWN BY DATE EHILE 2006/03/20 CHECKED BY DATE EHILE 2006/03/20 APPROVED BY DATE RDEROSS 2006/03/20	INCH	3.81MM, EURO PLUG, RIGHT ANGLE	Molex MOLEX INCORPORATED DOCUMENT NO. SD-39510-001 SHEET NO. 1 OF 2
		DRAFT WHERE APPLICABLE MUST REMAIN WITHIN DIMENSIONS	SEE CHART	THIS DRAWING CONTAINS INFORMATION THAT IS PROPRIETARY TO MOLEX INCORPORATED AND SHOULD NOT BE USED WITHOUT WRITTEN PERMISSION			

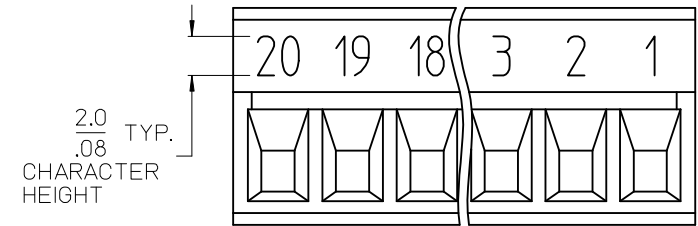
9 8 7 6 5 4 3 2 1

10 9 8 7 6 5 4 3 2 1

Circuit size	Material Numbers												Dimensional Information						
	Black						Green												
	100% Tin			30 u" Gold			100% Tin			30 u" Gold			Dim. A		Dim. B				
	Printing Options			Printing Options			Printing Options			Printing Options			mm	inch	mm	inch			
	None	10A	11A	None	10A	11A	None	10A	11A	None	10A	11A	None	10A	11A				
2	395100002	395100102	395100202	395100502	395100802	395101102	395101402	395101702	395102002	395102302	395102602	395102902	8.4	0.33	3.8	0.15			
3	395100003	395100103	395100203	395100503	395100803	395101103	395101403	395101703	395102003	395102303	395102603	395102903	12.2	0.48	7.6	0.30			
4	395100004	395100104	395100204	395100504	395100804	395101104	395101404	395101704	395102004	395102304	395102604	395102904	16.0	0.63	11.4	0.45			
5	395100005	395100105	395100205	395100505	395100805	395101105	395101405	395101705	395102005	395102305	395102605	395102905	19.8	0.78	15.2	0.60			
6	395100006	395100106	395100206	395100506	395100806	395101106	395101406	395101706	395102006	395102306	395102606	395102906	23.7	0.93	19.1	0.75			
7	395100007	395100107	395100207	395100507	395100807	395101107	395101407	395101707	395102007	395102307	395102607	395102907	27.5	1.08	22.9	0.90			
8	395100008	395100108	395100208	395100508	395100808	395101108	395101408	395101708	395102008	395102308	395102608	395102908	31.3	1.23	26.7	1.05			
9	395100009	395100109	395100209	395100509	395100809	395101109	395101409	395101709	395102009	395102309	395102609	395102909	35.1	1.38	30.5	1.20			
10	395100010	395100110	395100210	395100510	395100810	395101110	395101410	395101710	395102010	395102310	395102610	395102910	38.9	1.53	34.3	1.35			
11	395100011	395100111	395100211	395100511	395100811	395101111	395101411	395101711	395102011	395102311	395102611	395102911	42.7	1.68	38.1	1.50			
12	395100012	395100112	395100212	395100512	395100812	395101112	395101412	395101712	395102012	395102312	395102612	395102912	46.5	1.83	41.9	1.65			
13	395100013	395100113	395100213	395100513	395100813	395101113	395101413	395101713	395102013	395102313	395102613	395102913	50.3	1.98	45.7	1.80			
14	395100014	395100114	395100214	395100514	395100814	395101114	395101414	395101714	395102014	395102314	395102614	395102914	54.1	2.13	49.5	1.95			
15	395100015	395100115	395100215	395100515	395100815	395101115	395101415	395101715	395102015	395102315	395102615	395102915	57.9	2.28	53.3	2.10			
16	395100016	395100116	395100216	395100516	395100816	395101116	395101416	395101716	395102016	395102316	395102616	395102916	61.8	2.43	57.2	2.25			
17	395100017	395100117	395100217	395100517	395100817	395101117	395101417	395101717	395102017	395102317	395102617	395102917	65.6	2.58	61.0	2.40			
18	395100018	395100118	395100218	395100518	395100818	395101118	395101418	395101718	395102018	395102318	395102618	395102918	69.4	2.73	64.8	2.55			
19	395100019	395100119	395100219	395100519	395100819	395101119	395101419	395101719	395102019	395102319	395102619	395102919	73.2	2.88	68.6	2.70			
20	395100020	395100120	395100220	395100520	395100820	395101120	395101420	395101720	395102020	395102320	395102620	395102920	77.0	3.03	72.4	2.85			



10A IMPRINTING



11A IMPRINTING

TOLERANCES			
MM	TOL	INCH	TOL
0-6	±0.25	0-.24	±.010
>6-30	±0.40	.24-1.18	±.016
>30-120	±0.50	1.18-4.76	±.020
>120	±0.80	>4.76	±.031

REVISED DOC TOL EC NO: IFC2017-0861 DRAWN: ANAGATH 2017/03/23 CHKD: [Signature] APPR: BRUPERT 2017/04/18 REV	QUALITY SYMBOLS ▽=0 ▽=0	GENERAL TOLERANCES (UNLESS SPECIFIED) <table border="1"> <tr> <th></th> <th>mm</th> <th>INCH</th> </tr> <tr> <td>4 PLACES</td> <td>±---</td> <td>±---</td> </tr> <tr> <td>3 PLACES</td> <td>±---</td> <td>±---</td> </tr> <tr> <td>2 PLACES</td> <td>±---</td> <td>±---</td> </tr> <tr> <td>1 PLACE</td> <td>±---</td> <td>±---</td> </tr> <tr> <td colspan="3">ANGULAR ±---</td> </tr> </table>		mm	INCH	4 PLACES	±---	±---	3 PLACES	±---	±---	2 PLACES	±---	±---	1 PLACE	±---	±---	ANGULAR ±---			DIMENSION STYLE MM/IN	SCALE DESIGN UNITS INCH	THIRD ANGLE PROJECTION
		mm	INCH																				
	4 PLACES	±---	±---																				
	3 PLACES	±---	±---																				
2 PLACES	±---	±---																					
1 PLACE	±---	±---																					
ANGULAR ±---																							
DRAFT WHERE APPLICABLE MUST REMAIN WITHIN DIMENSIONS		DRAWN BY DATE EHILE 2006/03/20	TITLE 3.81MM, EURO PLUG, RIGHT ANGLE																				
MATERIAL NO. SD-39510-001		CHECKED BY DATE EHILE 2006/03/20	MOLEX INCORPORATED																				
SIZE B		APPROVED BY DATE RDEROSS 2006/03/20	DOCUMENT NO. SD-39510-001																				
SHEET NO. 2 OF 2																							

9 8 7 6 5 4 3 2 1