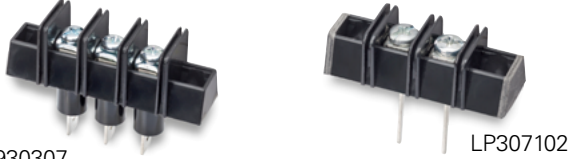


Single Row Terminal Blocks

A3, LP3 & CB3

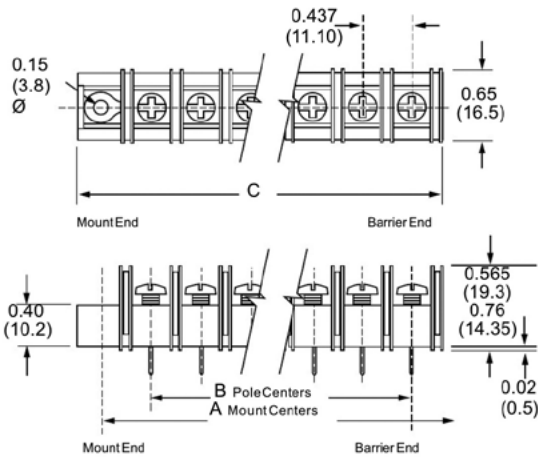
Dimensions Inches (Millimeters)

A3 & LP3



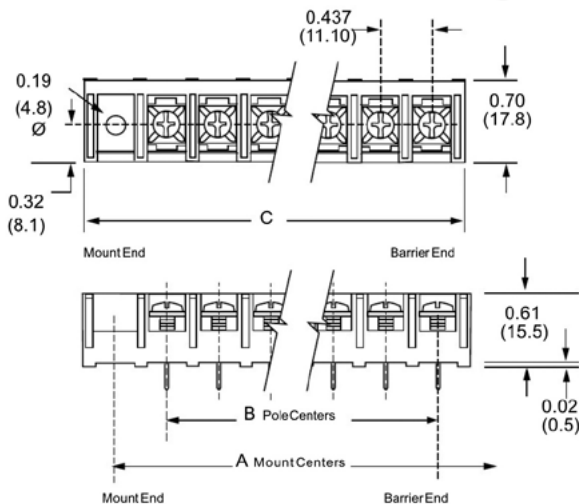
A31930307

LP307102



CB3

CB35110407MP



Specifications

Rating: A3: 30A, 600V* LP3: 30A, 150V* CB3: 30A, 600V*

Wire Range: #12-22 AWG Cu

Center Spacing: 0.437" or 7/16" (11.10mm)

Screw Size: #6-32 zinc-plated phillips screws.

Torque Rating: 9 lb-in.

Base: Standoffs standard for easy flux washing.

Distance Between Barriers: 0.32" (8.1mm)

Recommended PCB Hole Diameter: 0.076" (1.93mm)

Operating Temperature: 105°C (221°F) max., -40°C (-40°F) min.

Molded Material: Black, UL Rated 94V0 Thermoplastic

Breakdown Voltage: 3500V (A3 & LP3); 8200V (CB3)

Agency Information: UL File E62622, CSA 47235; IEC Compliance, CE Certified

* 30A Rating achieved with a #10 copper wire crimped to a ring terminal; 20 Rating without ring terminal.

Poles	MOUNTING ENDS ONLY		BARRIER & MOUNTING ENDS	
	A Mounting Ctrs.	C Length	B Pole Ctrs.	C Length
02	1.31	1.73	0.43	0.98
03	1.75	2.17	0.87	1.43
04	2.18	2.61	1.31	1.87
05	2.62	3.05	1.75	2.31
06	3.06	3.48	2.18	2.75
07	3.50	3.92	2.62	3.18
08	3.93	4.36	3.06	3.62
09	4.37	4.80	3.50	4.06
10	4.81	5.23	3.93	4.50
11	5.25	5.67	4.37	4.93
12	5.68	6.11	4.81	5.37
13	6.12	6.55	5.25	5.81
14	6.56	6.98	5.68	6.25
15	7.00	7.42	6.12	6.68
16	7.43	7.86	6.56	7.12
17	7.87	8.30	7.00	7.56
18	8.31	8.73	7.43	8.00
19	8.75	9.17	7.87	8.43
20	9.18	9.60	8.31	8.87
21	9.62	10.05	8.50	9.31
22	10.06	10.48	9.18	9.75
23	10.50	10.92	9.62	10.18
24	10.93	11.36	10.06	10.62
25	11.37	11.80	10.50	11.06
26	11.81	12.23	10.98	11.50
27	-	-	11.81	12.37
28	-	-	11.37	11.07

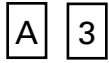


Powering Business Worldwide

Eaton's single row terminal blocks may, on occasion, have various cosmetic variations on their ends due to machining operations that achieve the proper number of poles required. Cutting and machining blemishes are permissible and have no effect on the fit, form or function of the product.

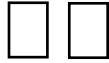
Part Numbering System

Family



A3 - standard barrier

Terminal Style



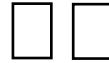
- 01** - handwired
- 02** - printed circuit
- 03** - non feed-thru
- 04** - wire wrap tail
- 05** - extended handwired
- 07** - extended pin
- 09** - 0.250 QC short
- 10** - 0.187 QC
- 19** - 0.250 QC long

Base/End



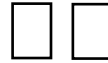
- 1** - std. base/mount end
- 2** - std. base/barrier
- 3*** - insulator base/mount end
- 4*** - insulator base/barrier end
- 5**** - closed base/mount end

Poles



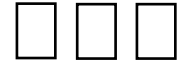
- 02 to 28** barrier end
- 02 to 26** mount end

Screw Options



- Blank-std. screws
- 03** - stainless steel
- 04** - brass nickel-plated
- 07** - steel SEMS zinc-plated***
- 09** - brass SEMS nickel-plated***
- 07WR** - steel SEMS wire ready
- CA†** - captive screw

Options



- AB** - angle mnt. options (pg 18)
- A1 to A9** - 0.250" QC
- B1 to B9** - 0.187" QC
- L1 to L6** marking options (pg 25)
- MP, MT** - mounting plates (pg 18)
- RC** - retaining clips (pg 18)
- R30 to R66** - right angle bends (pg 18)

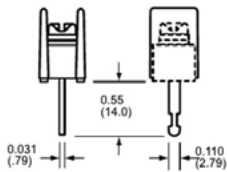
* Base/End Styles 3 and 4 not available with 02, 03, and 09 terminals.

** Base/End Note: 5 Style only available with 03 terminals.

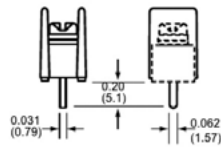
*** SEMS screws not available with hardware options

† Not compatible with 03 stainless steel screw option.

Terminal Styles Inches (Millimeters)



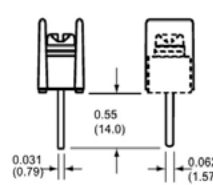
01
Handwired



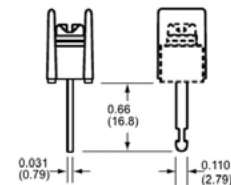
02
Printed Circuit



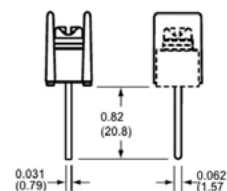
03
Non Feed-Thru



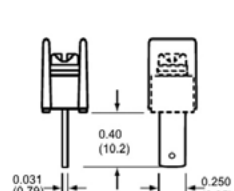
04
Wire Wrap Tail



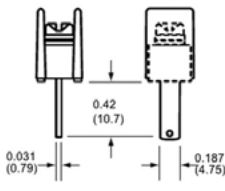
05
Extended Handwired



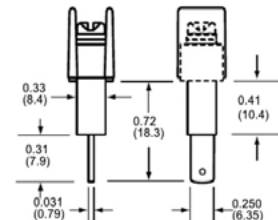
07
Extended Pin



09
0.250" QC Short



10
0.187" QC



19
0.250" QC Long

Screw Options

(Bulk ordering part numbers are in parentheses)



Standard
Zinc-Plated Steel
(F505-J)



03
Stainless Steel
(F507-J)



04
Brass
Nickel-Plated
(F506-3)



07
Steel SEMS
Zinc-Plated
(F523-J)



09
Brass SEMS
Nickel-Plated
(F524-J)



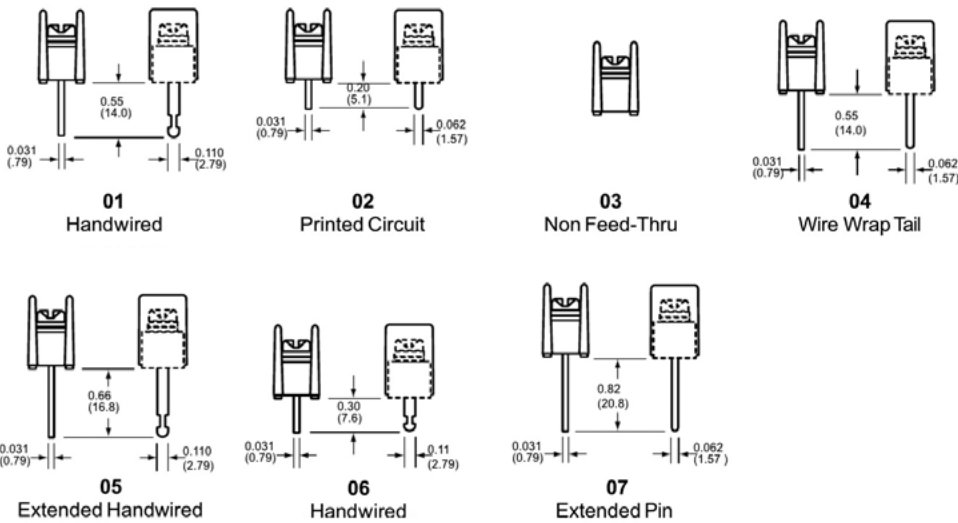
07WR
Wire Ready

Part Numbering System

Family	Terminal Style	Base/End	Poles	Screw Options	Options
<div style="display: flex; gap: 5px;"> <div style="border: 1px solid black; padding: 2px 5px;">L</div> <div style="border: 1px solid black; padding: 2px 5px;">P</div> <div style="border: 1px solid black; padding: 2px 5px;">3</div> </div> <p>LP3 - low profile barrier</p>	<div style="display: flex; gap: 10px;"> <div style="border: 1px solid black; width: 20px; height: 20px;"></div> <div style="border: 1px solid black; width: 20px; height: 20px;"></div> </div> <p> 01 - handwired 02 - printed circuit 03 - non feed-thru 04 - wire wrap tail 05 - extended handwired 07 - extended pin </p>	<div style="border: 1px solid black; width: 20px; height: 20px;"></div> <p> 1 - std. base/mount end 2 - std. base/barrier 3* - insulator base/mount end 4* - insulator base/barrier end 5** - closed base/mount end </p>	<div style="display: flex; gap: 10px;"> <div style="border: 1px solid black; width: 20px; height: 20px;"></div> <div style="border: 1px solid black; width: 20px; height: 20px;"></div> </div> <p> 02 to 28 barrier end 02 to 26 on mount end </p>	<div style="display: flex; gap: 10px;"> <div style="border: 1px solid black; width: 20px; height: 20px;"></div> <div style="border: 1px solid black; width: 20px; height: 20px;"></div> </div> <p> Blank-std. screws 00 - screws shipped 04 - brass nickel-plated 07 - steel SEMS zinc-plated*** CA - captive screw </p>	<div style="display: flex; gap: 10px;"> <div style="border: 1px solid black; width: 20px; height: 20px;"></div> <div style="border: 1px solid black; width: 20px; height: 20px;"></div> <div style="border: 1px solid black; width: 20px; height: 20px;"></div> </div> <p> A1 to A9 - 0.250" QC B1 to B9 - 0.187" QC L1 to L6 marking options (pg 25) MP - mounting plates (pg 18) R30 to R66 - right angle bends (pg 18) </p>

* A2 only.
 ** Not compatible with 03-stainless steel screws.
 *** SEMS screws not available with hardware options

Terminal Styles Inches (Millimeters)



Screw Options

(Bulk ordering part numbers are in parentheses)



Standard
Zinc-Plated Steel
(F505-J)



04
Brass
Nickel-Plated
(F506-J)



07
Steel SEMS
Zinc-Plated
(F523-J)

Hardware Options Inches (Millimeters)

(Bulk ordering part numbers are in parentheses)

Jumpers



†J201
Flatslip-on
(J201-J)



†OJ3
(OJ3-J)



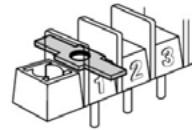
†OJ7
LP3 Only
(OJ7-J)



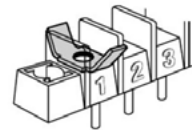
†OJ5
(OJ5-J)

† Contact Eaton for desired configuration.

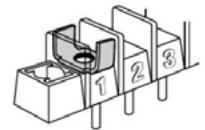
Quick Connects Blade Width A = 0.250" Blade Width B = 0.187"



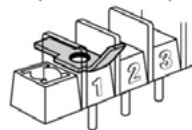
A1 & B1
(2A1-J & 2B1-J)



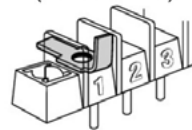
A2 & B2
(2A2-J & 2B2-J)



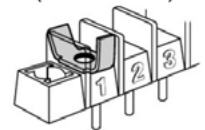
A3 & B3
(2A3-J & 2B3-J)



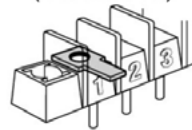
A4 & B4
(2A4-J & 2B4-J)



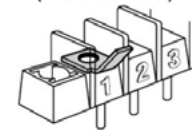
A5 & B5
(2A5-J & 2B5-J)



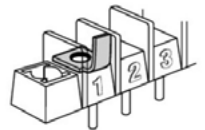
A6 & B6
(2A6-J & 2B6-J)



A7 & B7
(2A7-J & 2B7-J)



A8 & B8
(2A8-J & 2B8-J)



A9 & B9
(2A9-J & 2B9-J)

Base/End Options Inches (Millimeters)



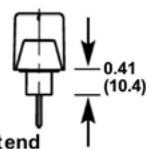
1 - Standard base/mount end



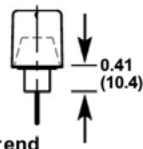
2 - Standard base/barrier end



3 - Insulator base/mount end



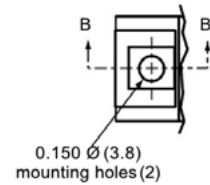
4 - Insulator base/barrier end



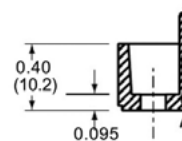
5 - Closed base/mount end



Mount End Details



0.150 Ø (3.8)
mounting holes (2)



SECTION B-B

1, 3 & 5 Mount End

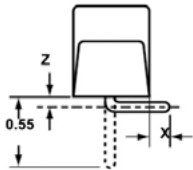
Note: On 1, 3 and 5 bases, Eaton may drill a terminal spacing to be a mount end. There will be no fit/form/function effect of mounting the product

Mounting Options Inches (Millimeters)

Right Angle Mounting Bracket

Right angle terminals are offered on the A3 & LP3. Configurations are defined in these dimensions: X = pin extension beyond the block base; Z = length from block base to centerline of the terminal tip. Standard bends consist of the X and Z dimensions shown in the chart. Specify by adding the selected Bend Option Code to the terminal part number.

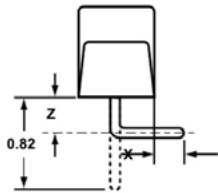
04 Terminal Bend Configurations



Bend Option Code	X (minimum)	Z	Available w/insulator base
R36	0.02	0.22	No
R42	0.08	0.16	No
R46	0.12	0.12	No
R50	0.16	0.08	No

Dimensions in inches. To convert to millimeters, multiply by 25.4.

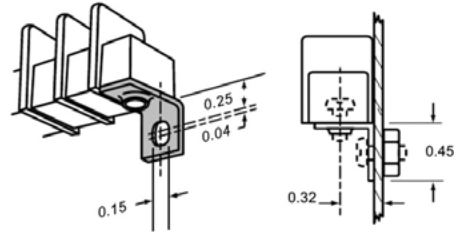
07 Terminal Bend Configurations



Bend Option Code	X (minimum)	Z	Available w/insulator base
R36	0.02	0.49	Yes
R50	0.16	0.35	No
R66	0.32	0.19	No

Dimensions in inches. To convert to millimeters, multiply by 25.4.

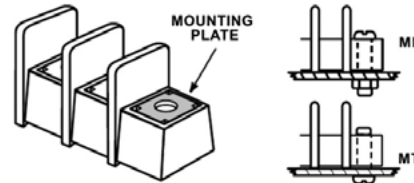
Angle Brackets (A3 only)



Option AB

Angle brackets enable block to be fastened at right angles to normal mount position. Bulk part number **2AB-J**.

Mounting Plates



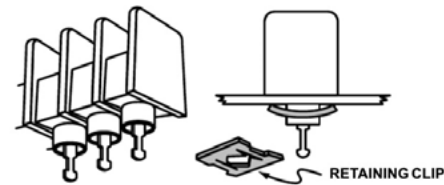
Options MP & MT

MP Metal inserts with 0.150" dia. hole accept #6 screw.

MT Metal inserts with tapped hole accept #6-32 screw.

Bulk part number **2MP-J, 2MT-J**.

Retaining Clip



Options RC

Use on standoff tubes. Fit panels up to 0.125" thick. Two clips for every five positions. Supplied unassembled. Bulk part number **H541-J**.

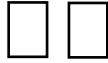
Part Numbering System

Family



CB3 - closed back

Terminal Style



01 - handwired
#6-32 screw

02 - printed circuit
#6-32 screw

07 - extended pin
#6-32 screw

51* - handwired
#8-32 screw

52* - printed circuit
#8-32 screw

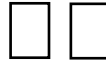
Base/End



1 - mount end

2 - barrier end

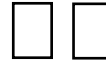
Poles



02 to 22 barrier
end

02 to 20
on mount
end

Screw Options

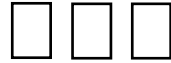


07 - steel SEMS
(standard)

09 - brass SEMS
nickel-plated

CA - SEMS captive

Options



A7 to A9 - 0.250" QC

B7 to B9 - 0.187" QC

EB exit back terminals

L1 to L6 marking options
(pg 25)

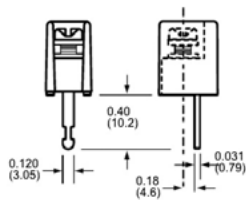
LT1 to LT6 marking options
(pg 25)

MP mtg. plates (pg 20)

Covers - (pg 26)

*Note: #8-32 screw is a special with #6-32 head.

Terminal Styles Inches (Millimeters)

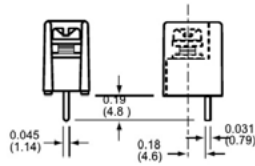


01

Handwired #6-32 screw

51

Handwired #8-32 screw

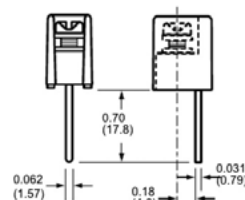


02

Printed Circuit #6-32 screw

52

Printed Circuit #8-32 screw



07

Extended Pin #6-32
screw

Screw Options

(Bulk ordering part numbers are in parentheses)



07

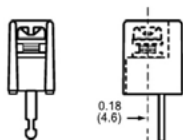
Steel SEMS
Zinc-Plated
(standard)
(B001-7084-J)



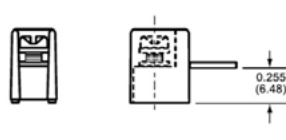
09

Brass SEMS
Nickel-Plated
(F524-J)

CB3 Terminal Exit Options Inches (Millimeters)



Exit Rear (std.)



EB
Exit Back

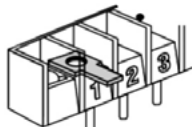
Hardware Options

Inches (Millimeters)

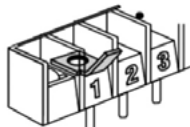
(Bulk ordering part numbers are in parentheses)



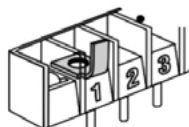
†OJ3
(OJ3-J)



A7 & B7
(2A7-J & 2B7-J)



A8 & B8
(2A8-J & 2B8-J)



A9 & B9
(2A9-J & 2B9-J)

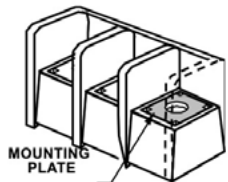


†OJ7
(OJ7-J)

† Contact Eaton for desired configuration.

Mounting Options Inches (Millimeters)

Mounting Plates



Options MP

MP Metal inserts with 0.150" dia. hole accept #6 screw.

Tools & resources

- [Webpage](#)
- [Terminal block selector tool](#)
- [Terminal block cross reference](#)
- [Contact us](#)

Eaton
Electronics Division
1000 Eaton Boulevard
Cleveland, OH 44122
United States
Eaton.com/electronics

© 2019 Eaton
All Rights Reserved
Printed in USA
Publication No. 10682 — BU-MC19146
November 2019

Eaton is a registered trademark.

All other trademarks are property
of their respective owners.

Follow us on social media to get the
latest product and support information.

