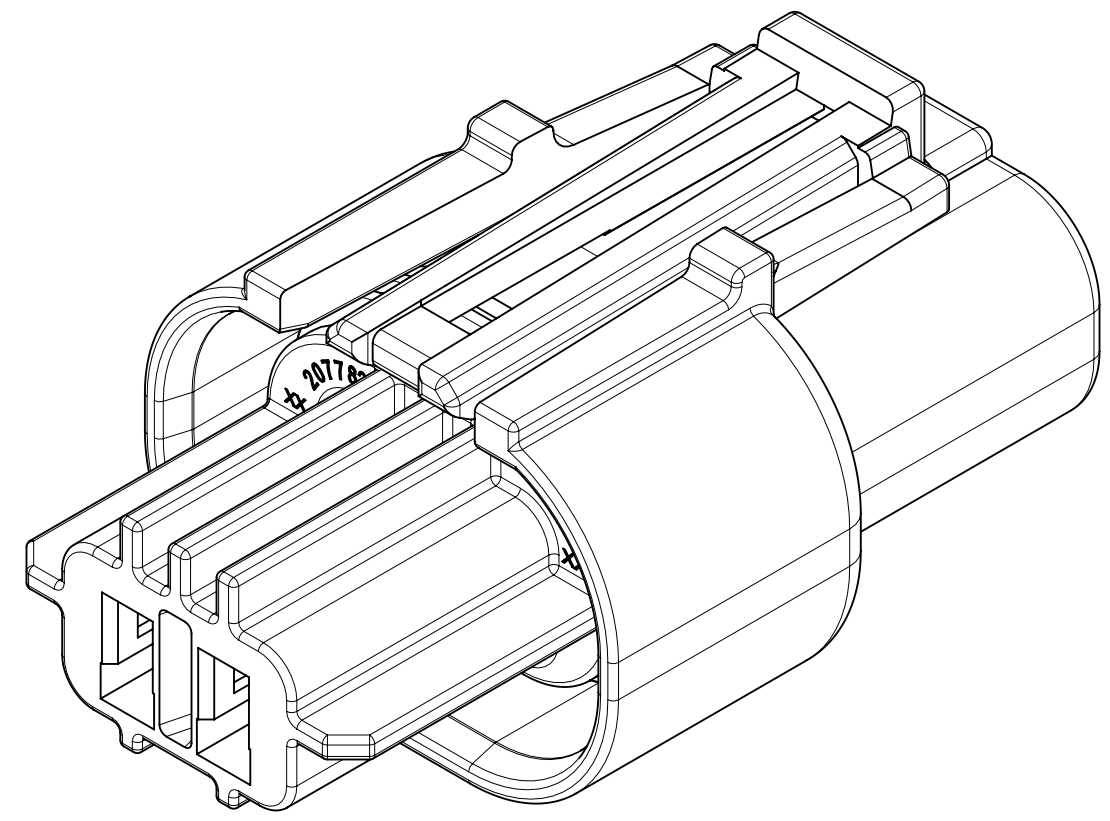
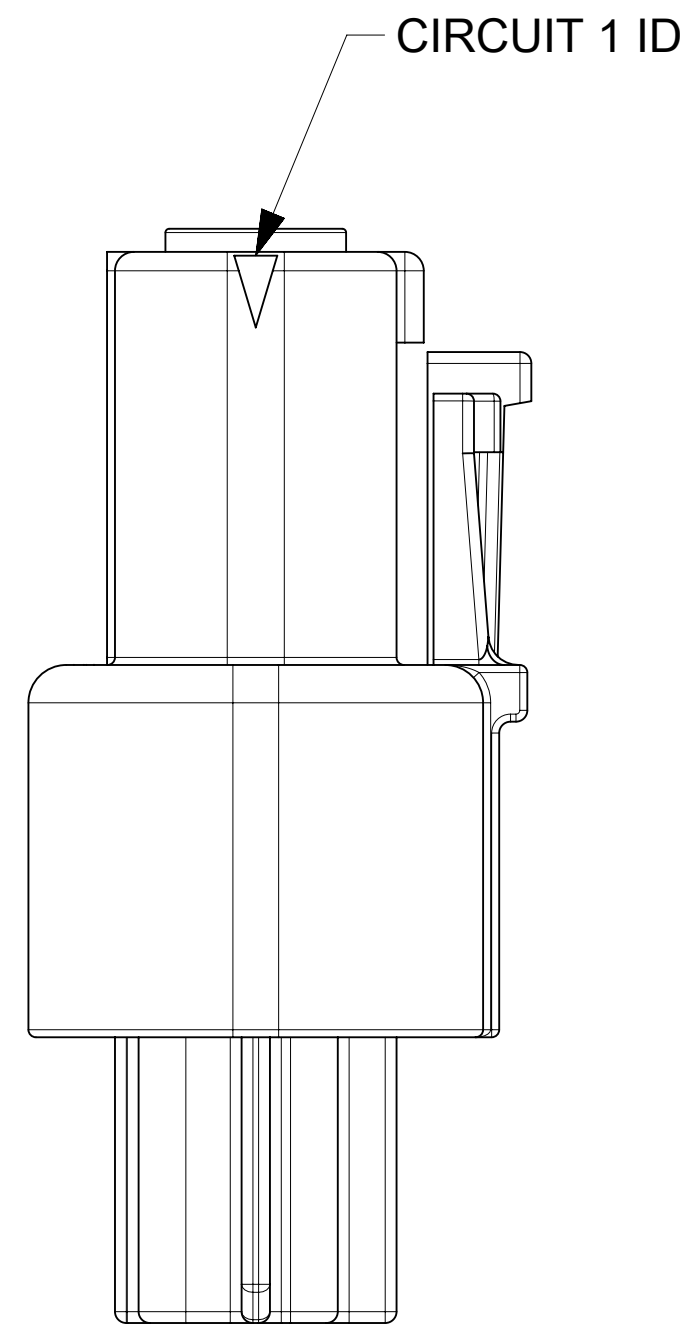


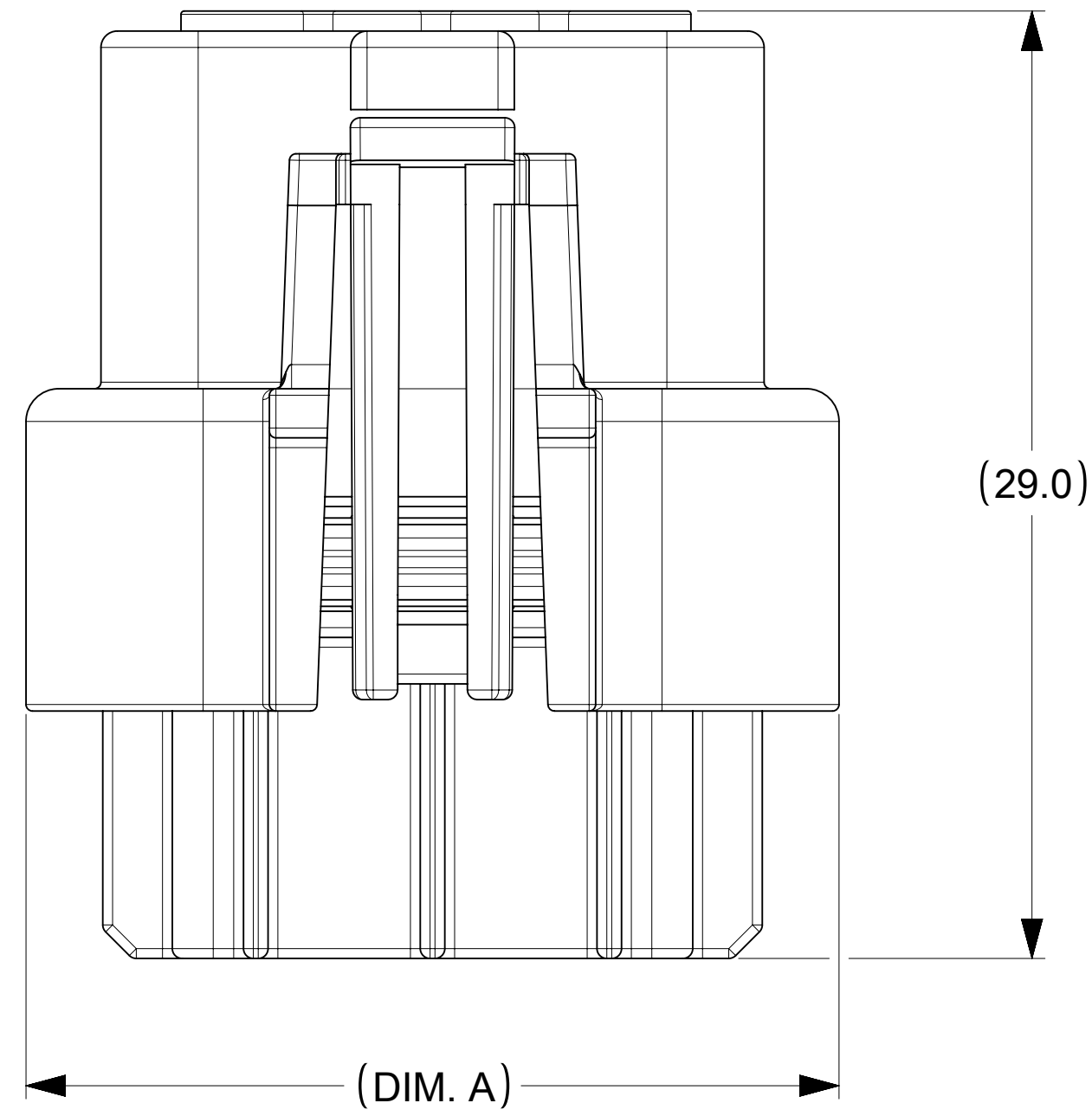
CIRCUIT SIZES



2 CKT

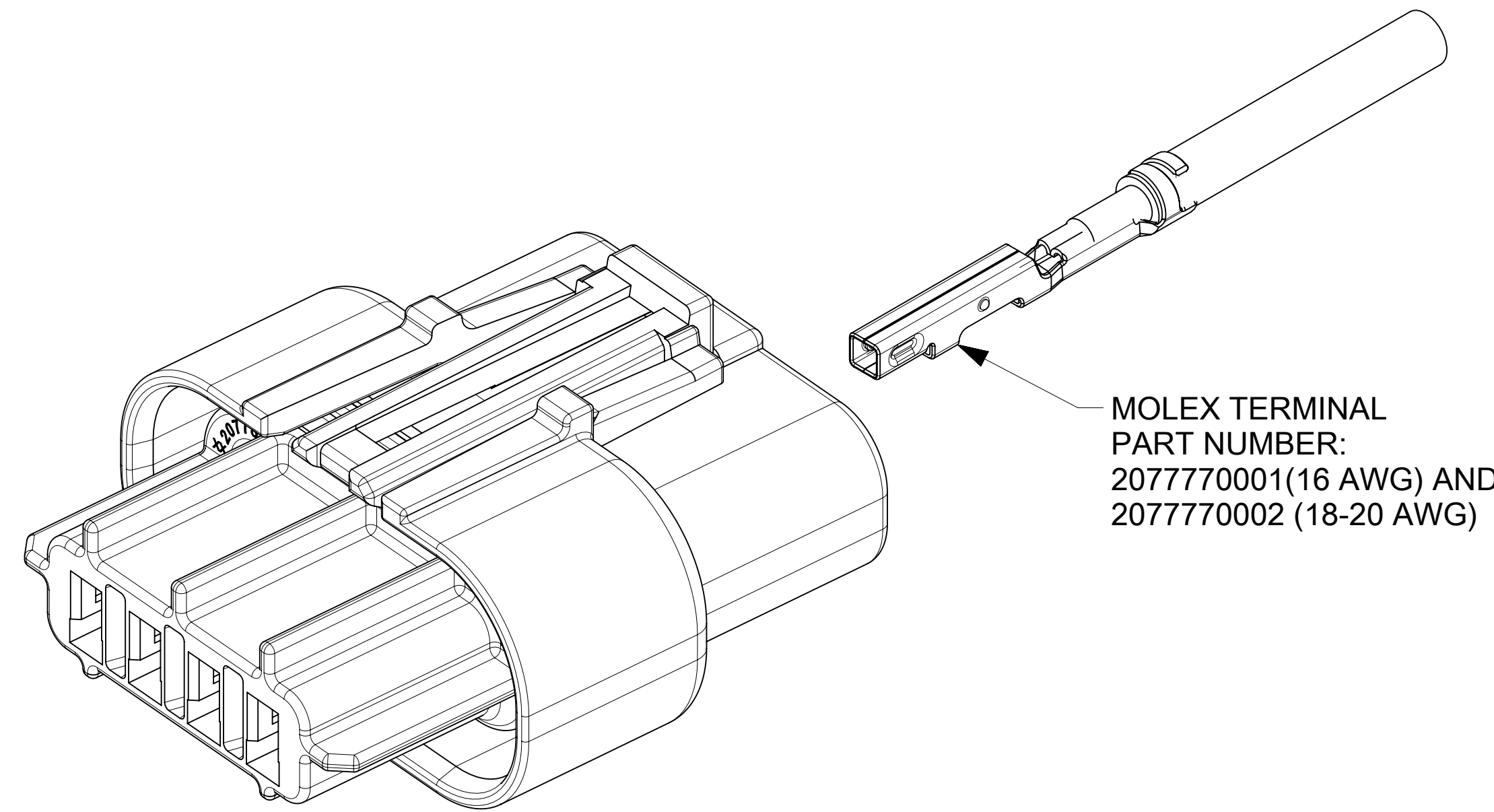


CIRCUIT 1 ID

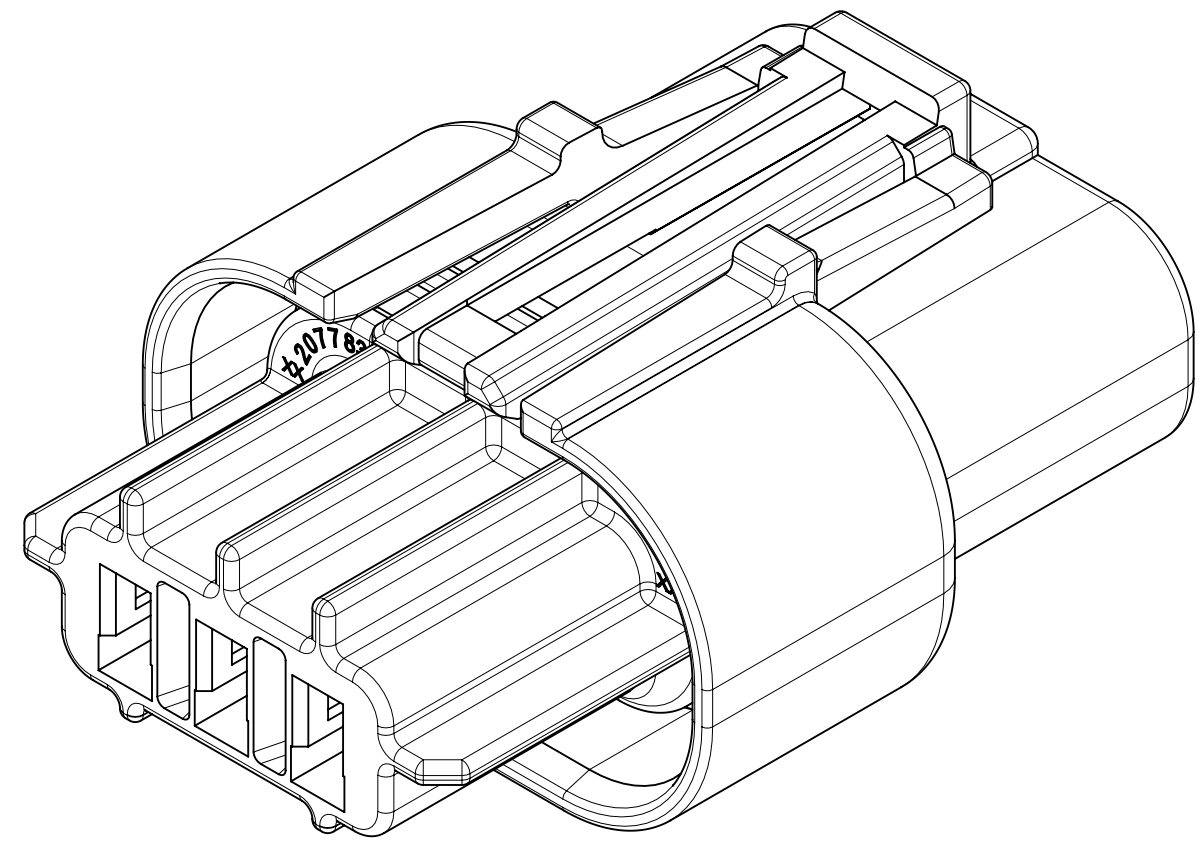


29.0

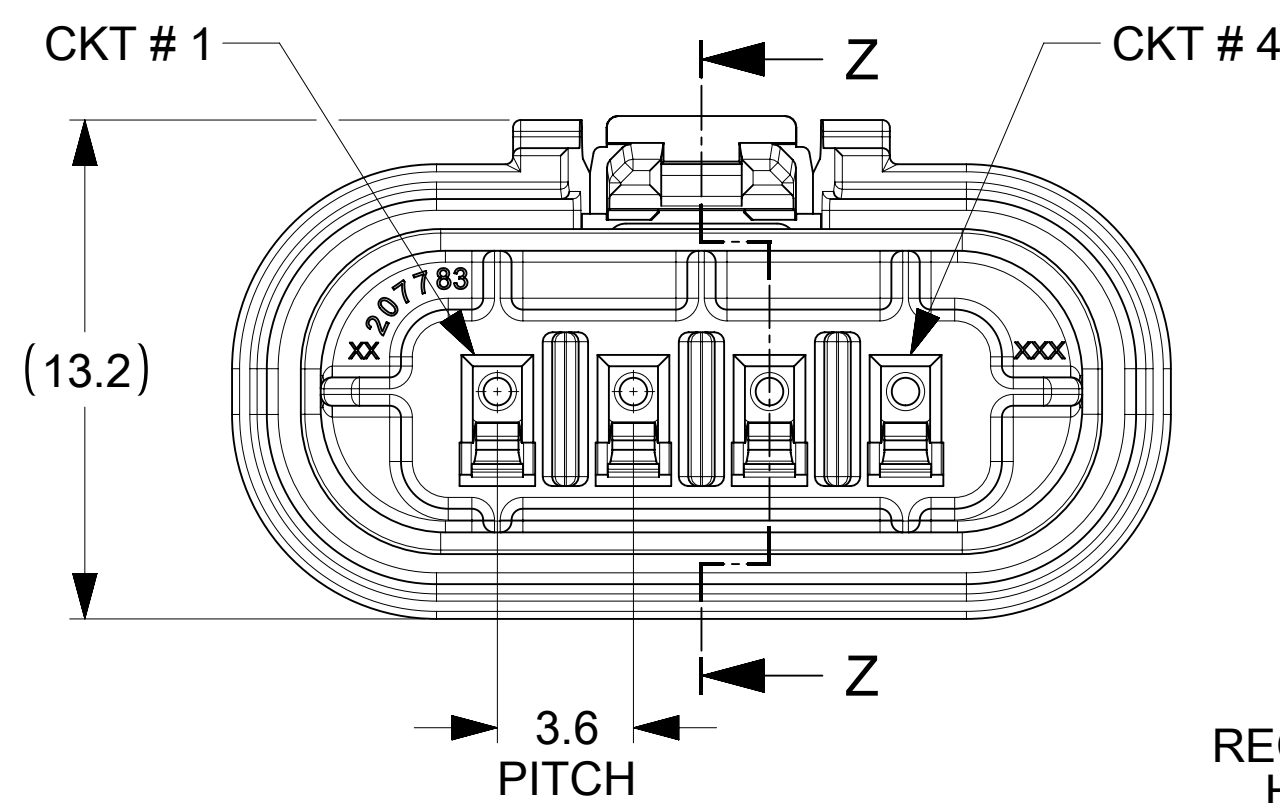
(DIM. A)



MOLEX TERMINAL
PART NUMBER:
207770001(16 AWG) AND
207770002 (18-20 AWG)



3 CKT

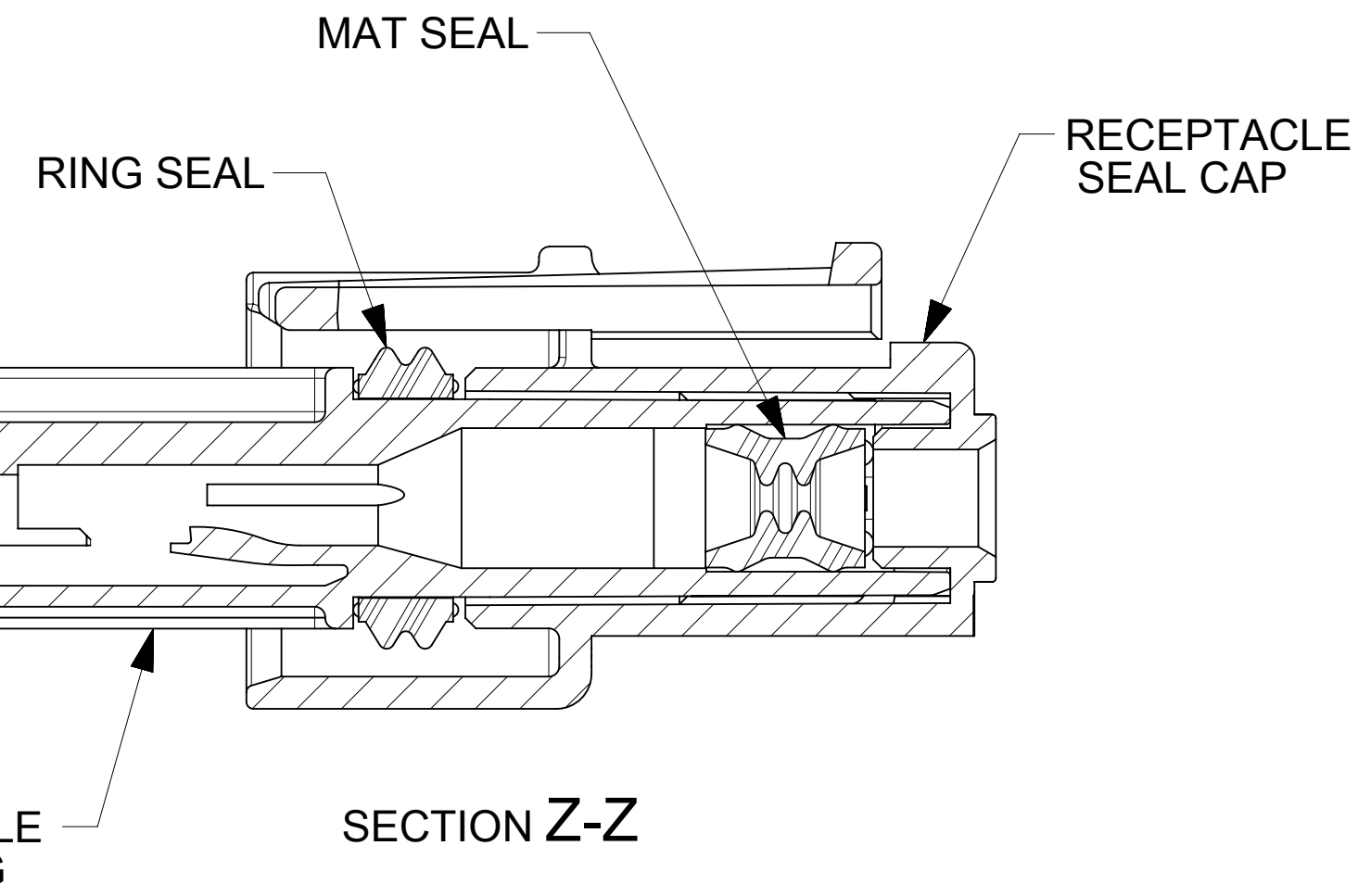


(13.2)

CKT # 1

CKT # 4

3.6
PITCH



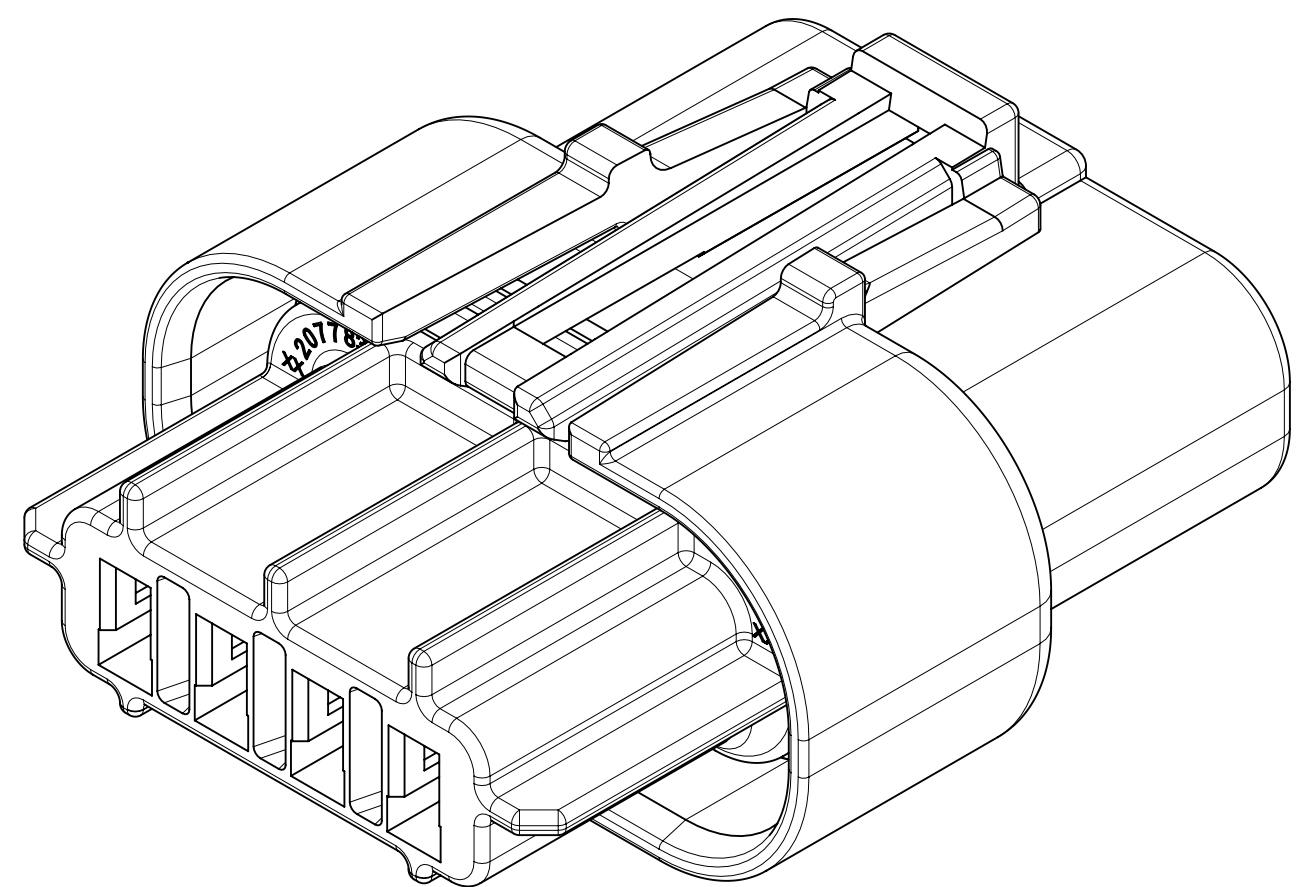
MAT SEAL

RING SEAL

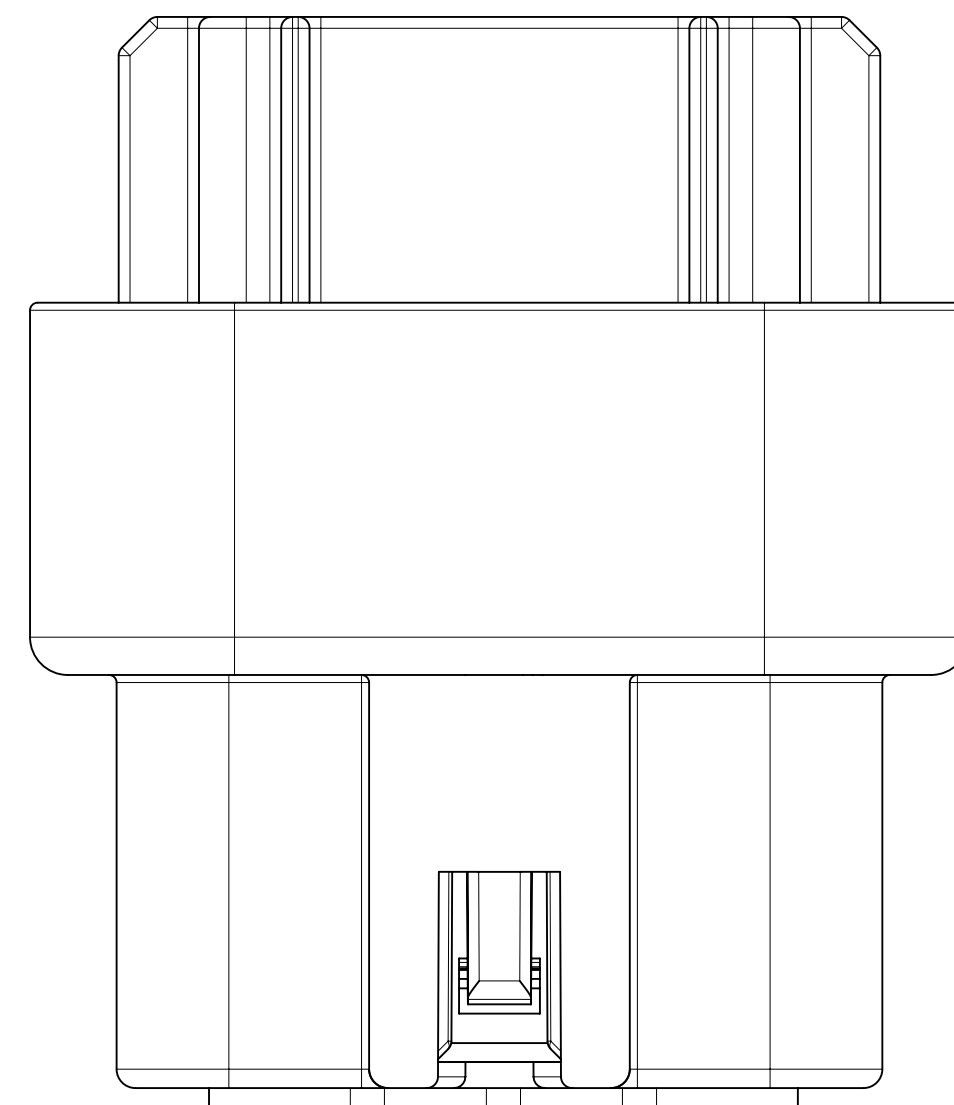
RECEPTACLE
SEAL CAP

RECEPTACLE
HOUSING

SECTION Z-Z



4 CKT



NOTES:

1. MATERIAL:

HOUSING & REAR SEAL CAP: NYLON, COLOR:BLACK
SEALS: INHERENTLY LUBRICATED SILICON

2. PRODUCT SPECIFICATION: 2077760000-PS

3. APPLICATION SPECIFICATION: 2077760000-AS

4. PACKAGING SPECIFICATION: 2077820000-PK

5. THIS PART MATES WITH PLUG SERIES 207778.

6. THIS PART USES TERMINAL SERIES 2077770001 AND 2077770002

7. THIS PART CONFORMS TO CLASS 'B' REQUIREMENTS OF COSMETIC SPECIFICATION PS-45499-002.

THIS DRAWING CONTAINS INFORMATION THAT IS PROPRIETARY TO MOLEX ELECTRONIC TECHNOLOGIES, LLC AND SHOULD NOT BE USED WITHOUT WRITTEN PERMISSION

DIMENSION UNITS mm	SCALE 5:1	CURRENT REV DESC: HSG LATCH IMPROVEMENT	molex			
GENERAL TOLERANCES (UNLESS SPECIFIED)						
ANGULAR TOL	± °	EC NO: 652852	PRODUCT CUSTOMER DRAWING			
4 PLACES	±	DRWN: SMAHAJANSHET 2021/01/11	DOCUMENT NUMBER	DOC TYPE	DOC PART	REVISION
3 PLACES	±	CHK'D: NCSR 2021/01/12	2077820000-SD	PSD	000	B
2 PLACES	± 0.2	APPR: NCSR 2021/01/12				
1 PLACE	± 0.25	INITIAL REVISION:				
0 PLACES	±	DRWN: MUM 2019/01/30				
DRAFT WHERE APPLICABLE MUST REMAIN WITHIN DIMENSIONS		APPR: NCSR 2019/07/03				
THIRD ANGLE PROJECTION		DRAWING SERIES	MATERIAL NUMBER	CUSTOMER		SHEET NUMBER
D		D-SIZE	207782	SEE TABLE	GENERAL MARKET	1 OF 1