

- Universal Input (85 - 265VAC)
- Power Factor Corrected
- 200% Peak Power capability on 24V output
- 2 Year Warranty
- Individual output adjustment

ZWD-PAF Series

100W to 440W

Dual Output Power Supplies

Key Market Segments & Applications

Factory Automation
Printer and Motor Drives
Kiosks

ZWD-PAF Features and Benefits

Features

- Input Transient Protected
- Power Factor Corrected
- 200% Peak Power Capability

Benefits

- Withstands Harsh Environments
- Supports Global Use
- Can Drive High current Start Up Devices or pulse loads

Specifications

ITEMS	MODEL	ZWD100PAF-0524	ZWD150PAF-0524	ZWD225PAF-0524
Input Voltage	-	85-265VAC (47-63Hz), 120-370VDC		
Input Current	(1) A	1.3 / 0.65	1.9 / 0.97	2.81 / 1.43
Inrush Current	(1)(2) A	15 / 30		
Power Factor	-	0.99 at 100VAC, 0.95 at 200VAC, Meets EN61000-3-2		
Leakage Current	mA	0.75mA max		
Temperature Coefficient	-	<0.02%/°C		
Overcurrent Protection	(3) -	5V output: >105%, 24V output: >205%		
Overvoltage Protection	(4) V	120- 145%		
Hold Up Time (Typ)	(1) ms	5V output: 40ms, 24V output: 20ms		
Efficiency	(2) %	79 / 81	80 / 82	81 / 83
Remote On/Off	-	On 24V output only, remove jumper to shutdown		
Line Regulation	mV	5V output: 20mV, 24V output: 96mV		
Load Regulation	mV	5V output: 40mV, 24V output: 150mV		
Ripple & Noise	mV	5V output: 120mV, 24V output: 150mV		
Operating Temperature	-	(Open frame or L bracket) -10°C to +70°C, derate linearly to 0% load from 50°C to 70°C		
Operating Temperature	-	(With /A cover option) -10°C to +60°C, derate linearly to 0% load from 40°C to 60°C		
Storage Temperature	-	-30 to +85°C		
Humidity (non condensing)	-	Operating: 20 - 90%RH, Non-operating: 10 - 95% RH		
Cooling	-	Convection cooled		
Withstand Voltage	-	I/P to Gnd 2kVAC (20mA), I/P to O/P 3kVAC (20mA), O/P to Gnd 500VAC (100mA) for 1 min.		
Isolation Resistance	-	>100M at 25°C & 70%RH, Output to Ground 500VDC		
Vibration (non operating)	-	10 - 55Hz (1 minute sweep), 19.6m/s ² constant X, Y, Z 1 hour		
Shock	-	< 196.1 m/s ²		
Safety Agency Approvals	-	IEC/UL/CSA/EN62368-1, 60950-1, CE Mark		
Conducted & Radiated EMI	-	EN55022-B, FCC Class B, VCCI-B		
Immunity	-	EN61000-4-2, -3, -4, -5, -6, -8, -11		
Weight (Typ)	g	460 (780 with cover)	530 (885 with cover)	670 (1065 with cover)
Size (WxHxD)	mm	222 x 75 x 35	222 x 85 x 40	222 x 95 x 45
Warranty	yrs	2 Years		

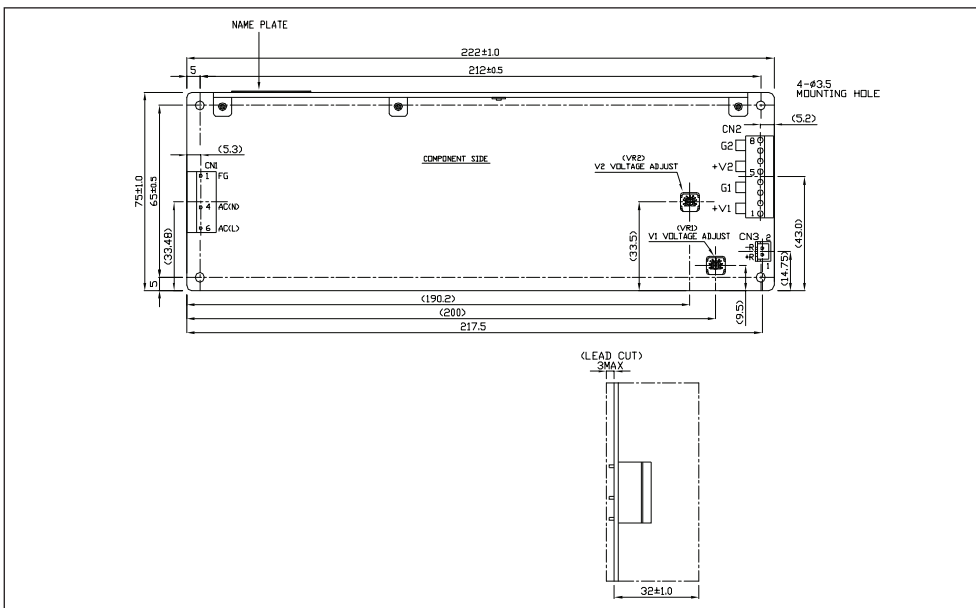
Notes: See installation manual for full specification.

(1) 100/200VAC (2) 25°C ambient (cold start) (3) Avoid prolonged operation in overload (4) OVP on 24V output will shutdown 24V output only

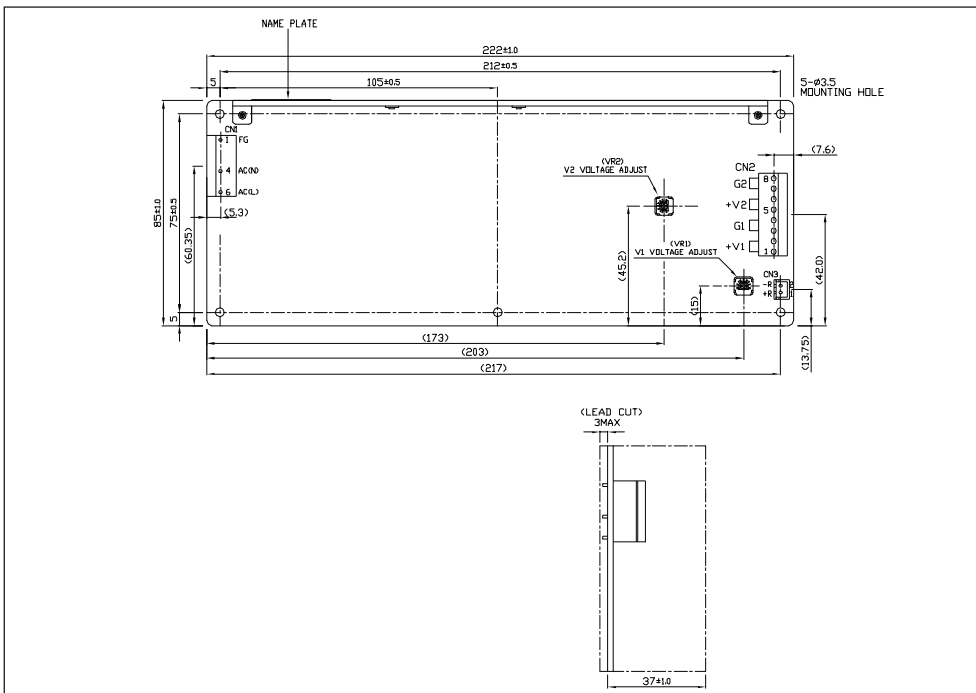
Model Selector

Model	Output Voltage	Output Voltage Accuracy	Adjust Range	Max Current	Peak ^{1,5} Current	Max Peak ^{1,5} Power	Total ^{1,5} Average Power	Peak Power
ZWD100PAF-0524	5V	4.9 - 5.1V	4.5 - 5.5V	5A	-	-	100W	172 / 196W
	24V	23.52 - 24.48V	22.8 - 27.6V	4A	7 / 8A	168 / 192W		
ZWD150PAF-0524	5V	4.9 - 5.1V	4.5 - 5.5V	5A	-	-	150W	246 / 294W
	24V	23.52 - 24.48V	22.8 - 27.6V	6A	10 / 12A	240 / 288W		
ZWD225PAF-0524	5V	4.9 - 5.1V	4.5 - 5.5V	5A	-	-	225W	344 / 440W
	24V	23.52 - 24.48V	22.8 - 27.6V	9A	14 / 18A	336 / 432W		

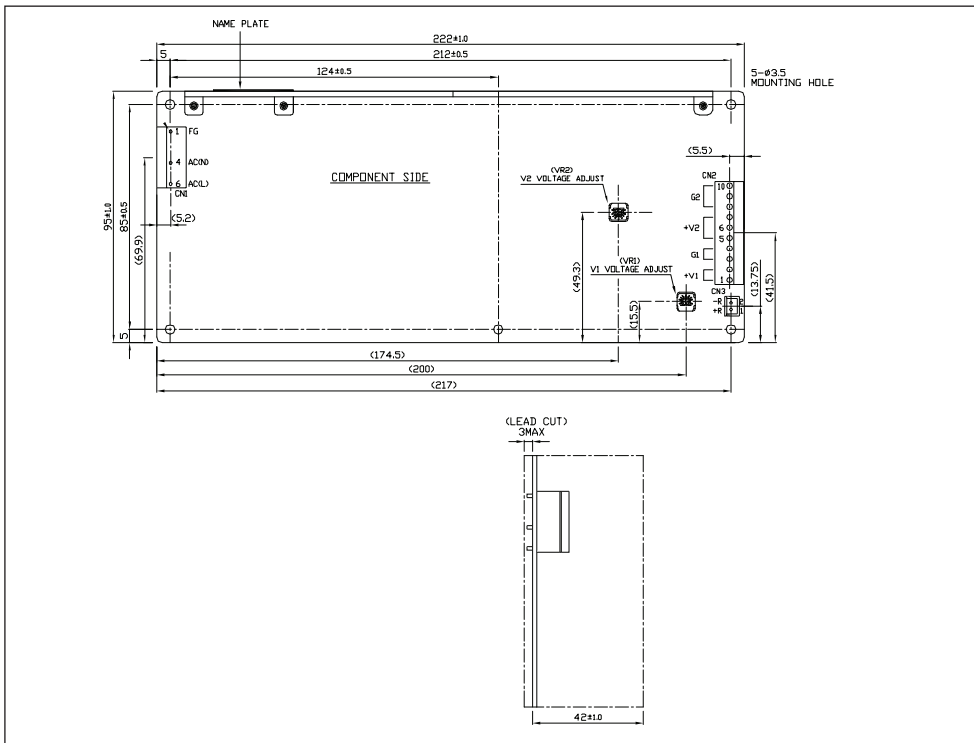
Outline Drawing ZWD100 Series



Outline Drawing ZWD150 Series



Outline Drawing ZWD225 Series



Notes:

- (5) ZWD100PAF: For <10s max, duty cycle ≤0.35
 ZWD150PAF: Up to 10A peak, <10s max, duty cycle ≤0.35; from 10-12A, <5s, duty cycle ≤0.2
 ZWD225PAF: Up to 14A peak, <10s max, duty cycle ≤0.35; from 14-18A, <5s, duty cycle ≤0.2

Options

Suffix	Description
blank	Molex Input & Output Connector
/L	L Bracket
/A	Cover & L Bracket
/J	JST Input & Output Connector
/T	Vertical Mount Screw Terminals

Preferred option combination: blank, /L, /TL, or /TA

Example: **ZWD100PAF-0524/TA**



TDK-Lambda France SAS

Tel: +33 1 60 12 71 65
 tlf.fr-powersolutions@tdk.com
 www.emea.lambda.tdk.com/fr



Italy Sales Office

Tel: +39 02 61 29 38 63
 tlf.it-powersolutions@tdk.com
 www.emea.lambda.tdk.com/it



Netherlands

tlf.nl-powersolutions@tdk.com
 www.emea.lambda.tdk.com/nl



TDK-Lambda Germany GmbH

Tel: +49 7841 666 0
 tlg.powersolutions@tdk.com
 www.emea.lambda.tdk.com/de



Austria Sales Office

Tel: +43 2256 655 84
 tlg.at-powersolutions@tdk.com
 www.emea.lambda.tdk.com/at



Switzerland Sales Office

Tel: +41 44 850 53 53
 tlg.ch-powersolutions@tdk.com
 www.emea.lambda.tdk.com/ch



Nordic Sales Office

Tel: +45 8853 8086
 tlg.dk-powersolutions@tdk.com
 www.emea.lambda.tdk.com/dk



TDK-Lambda UK Ltd.

Tel: +44 (0) 12 71 85 66 66
 tlu.powersolutions@tdk.com
 www.emea.lambda.tdk.com/uk



TDK-Lambda Ltd.

Tel: +9 723 902 4333
 tli.powersolutions@tdk.com
 www.emea.lambda.tdk.com/il-en



TDK-Lambda Americas

Tel: +1 800-LAMBDA-4 or 1-800-526-2324
 tla.powersolutions@tdk.com
 www.us.lambda.tdk.com



TDK Electronics do Brasil Ltda

Tel: +55 11 3289-9599
 sales.br@tdk-electronics.tdk.com
 www.tdk-electronics.tdk.com/en



TDK-Lambda Corporation

Tel: +81-3-6778-1113
 www.jp.lambda.tdk.com



TDK-Lambda (China) Electronics Co. Ltd.

Tel: +86 21 6485-0777
 tlc.powersolutions@tdk.com
 www.lambda.tdk.com.cn



TDK-Lambda Singapore Pte Ltd.

Tel: +65 6251 7211
 tfs.marketing@tdk.com
 www.sg.lambda.tdk.com



TDK India Private Limited, Power Supply Division

Tel: +91 80 4039-0660
 mathew.philip@tdk.com
 www.sg.lambda.tdk.com

