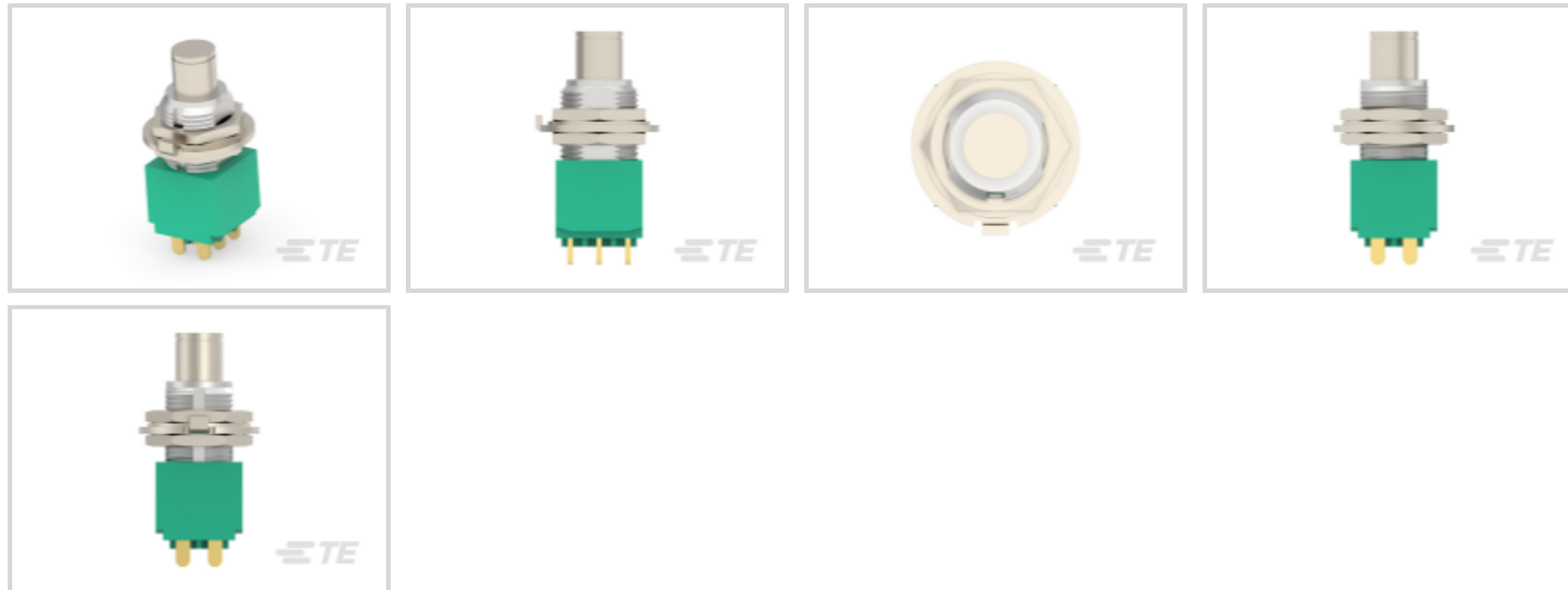




Switches > Push Button Switches



Configuration (Pole-Throw): **Double Pole - Double Throw**

Push Button Switch Product Type: **Switch**

Number of Actuators: **Single**

Actuator Profile: **Extended**

Bushing Style: **Threaded**

Features

Product Type Features

Switch Connection Type	Wire Lugs
Push Button Switch Product Type	Switch
Illuminated	Without
Actuator Style	Cap - Supplied

Configuration Features

Configuration (Pole-Throw)	Double Pole - Double Throw
Number of Actuators	Single
Snap Action	Without
Support Bracket	Without
Switch Feedback Type	Non-Tactile
Operating Function	Push-On/Push-Off

Electrical Characteristics

Operating Voltage Range	125 VAC, 250 VAC
-------------------------	------------------

Body Features



Actuator Force	400 – 2000 g[14.11 – 70.54 oz]
Case Material	Thermoset
Actuator Material	Phenol Resin
Product Orientation	Vertical
Actuator Profile	Extended
Bushing Style	Threaded
Bushing Thread Size	15/32
Actuator Color	Black

Contact Features

Contact Base Material	Silver Clad Copper
Contact Current Rating	6 A
Switch Contact Plating Material	Silver Clad with Gold Flash

Mechanical Attachment

Thread Size	15/32-32 UNS-2A
-------------	-----------------

Housing Features

Low Profile	No
Process Sealed	No

Dimensions

Actuator Length	8 mm[.315 in]
Cap Diameter	8.99 mm[.354 in]

Usage Conditions

Operating Temperature Range	-20 – 85 °C
-----------------------------	-------------

Packaging Features

Packaging Method	Bulk
------------------	------

Product Compliance

[For compliance documentation, visit the product page on TE.com>](#)

EU RoHS Directive 2011/65/EU	Compliant with Exemptions
EU ELV Directive 2000/53/EC	Compliant with Exemptions
China RoHS 2 Directive MIIT Order No 32, 2016	Restricted Materials Above Threshold
EU REACH Regulation (EC) No. 1907/2006	Current ECHA Candidate List: JUNE 2023 (235)



Candidate List Declared Against: JAN 2023
(233)

SVHC > Threshold:

1,6,7,8,9,14,15,16,17,17,18,18-

dodecachloropentacyclo

[12.2.1.16,9.02,13.05,10]octadeca-7,15-

diene (Dechlorane Plus) (.11% in

Component Part)

Pb (3.9% in Component Part)

Article Safe Usage Statements:

Do not eat, drink or smoke when using this product. Wash thoroughly after handling. Do not handle until all safety precautions have been read and understood. Recycle if possible and dispose of the article by following all applicable governmental regulations relevant to your geographic location.

Halogen Content

Not Low Halogen - contains Br or Cl > 900 ppm.

Solder Process Capability

Wave solder capable to 240°C

Product Compliance Disclaimer

This information is provided based on reasonable inquiry of our suppliers and represents our current actual knowledge based on the information they provided. This information is subject to change. The part numbers that TE has identified as EU RoHS compliant have a maximum concentration of 0.1% by weight in homogenous materials for lead, hexavalent chromium, mercury, PBB, PBDE, DBP, BBP, DEHP, DIBP, and 0.01% for cadmium, or qualify for an exemption to these limits as defined in the Annexes of Directive 2011/65/EU (RoHS2). Finished electrical and electronic equipment products will be CE marked as required by Directive 2011/65/EU. Components may not be CE marked. Additionally, the part numbers that TE has identified as EU ELV compliant have a maximum concentration of 0.1% by weight in homogenous materials for lead, hexavalent chromium, and mercury, and 0.01% for cadmium, or qualify for an exemption to these limits as defined in the Annexes of Directive 2000/53/EC (ELV). Regarding the REACH Regulation, the information TE provides on SVHC in articles for this part number is based on the latest European Chemicals Agency (ECHA) 'Guidance on requirements for substances in articles' posted at this URL: <https://echa.europa.eu/guidance-documents/guidance-on-reach>

Compatible Parts



TE Part # 4-1437567-9
MPG106D=(MSPG) SWITCH
PUSHBUTT



TE Part # 3-1437567-3
MPA206R=SW P/B MOM DPDT



TE Part # 4-1437567-3
MPE106F=SWITCH PUSH BUTTON
WAT



TE Part # 2-1437567-9
MPA106F=SWITCH P/B MOM SPDT



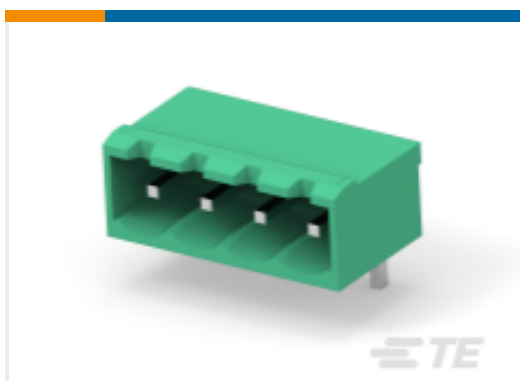
TE Part # 4-1437567-5
MPE206R=(MSPE) SW P/B WATERPRO

Also in the Series | Alcoswitch MPG

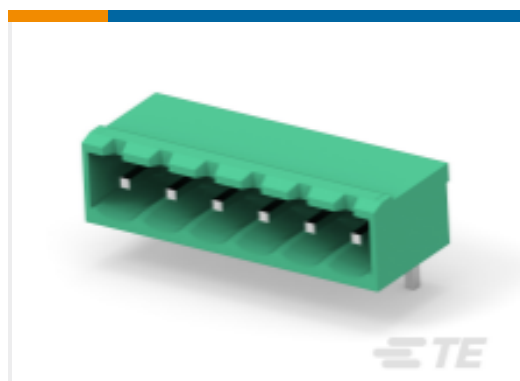


Push Button Switches(9)

Customers Also Bought



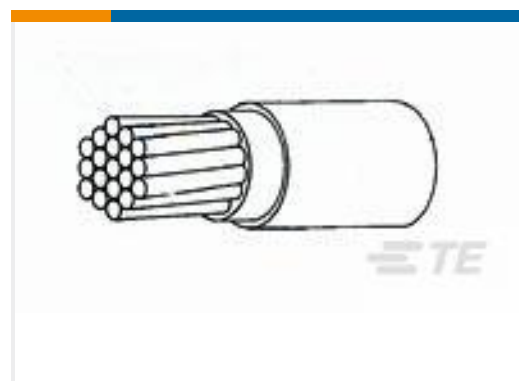
TE Part #2350513-4
4POS TB HDR 90 DEG, PITCH 5.0 & TL 4.5mm



TE Part #2350513-6
6POS TB HDR 90 DEG, PITCH 5.0 & TL 4.5mm



TE Part #ASL006-05PN-HE
RECEPT.ASSY. 2 HOLE MNT.MICRO MK3



TE Part #2857543007
44A0111-26-4



TE Part #AS012-35PB
RECEPT.2 HOLE MNT.TYPE 0



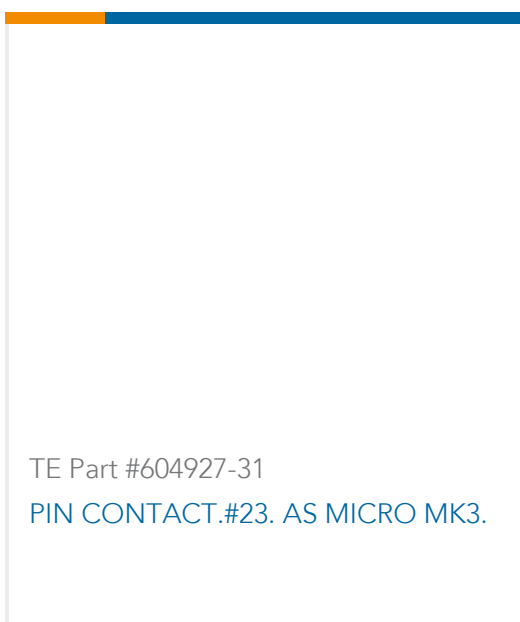
TE Part #AS014-35PN
RECEPT.2 HOLE MTG.TYPE 0



TE Part #AS212-35PN
RECEPT.BOX MTG.TYPE 2



TE Part #AS608-35PN
PLUG BOOT TERMINN TYPE 6



TE Part #604927-31
PIN CONTACT.#23. AS MICRO MK3.



TE Part #839019-E
IDCCS SRC 1,27 6 * SFX SFX 100 PVC

Documents

Product Drawings

MPG206N=SWITCH PUSHBUTTON

English

CAD Files

3D PDF

3D



Customer View Model

[ENG_CVM_CVM_5-1437567-1_D.2d_dxf.zip](#)

English

Customer View Model

[ENG_CVM_CVM_5-1437567-1_D.3d_igs.zip](#)

English

Customer View Model

[ENG_CVM_CVM_5-1437567-1_D.3d_stp.zip](#)

English

By downloading the CAD file I accept and agree to the [Terms and Conditions](#) of use.

Datasheets & Catalog Pages

[2-1773458-6_GREEN_SERIES_SWITCHES](#)

English