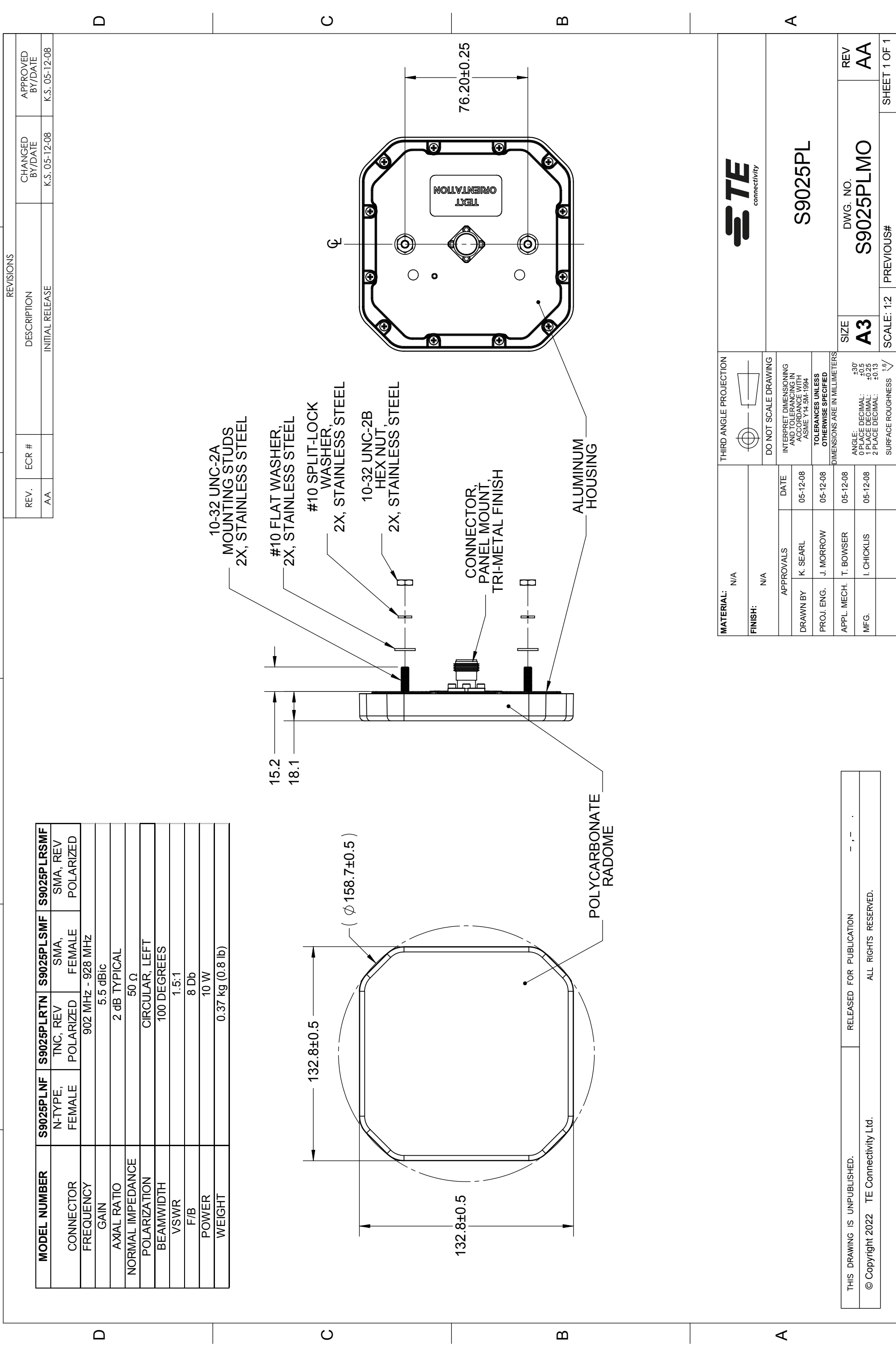


MODEL NUMBER	S9025PLNF	S9025PLRTN	S9025PLSMF	S9025PLRSMF
CONNECTOR	N-TYPE, FEMALE	TNC, REV POLARIZED	SMA, FEMALE	SMA, REV POLARIZED
FREQUENCY	902 MHz - 928 MHz			
GAIN	5.5 dBic			
AXIAL RATIO	2 dB TYPICAL			
NORMAL IMPEDANCE	50 Ω			
POLARIZATION	CIRCULAR, LEFT			
BEAMWIDTH	100 DEGREES			
VSWR	1.5:1			
F/B	8 Db			
POWER	10 W			
WEIGHT	0.37 kg (0.8 lb)			

REV.	ECR #	DESCRIPTION	CHANGED BY/DATE	APPROVED BY/DATE
AA		INITIAL RELEASE	K.S. 05-12-08	K.S. 05-12-08



MATERIAL: N/A		THIRD ANGLE PROJECTION	
FINISH: N/A		DO NOT SCALE DRAWING	
APPROVALS	DATE	INTERPRET DIMENSIONING AND TOLERANCING IN ACCORDANCE WITH ASME Y14.5M-1994	
DRAWN BY: K. SEARL	05-12-08	TOLERANCES UNLESS OTHERWISE SPECIFIED	
PROJ. ENG.: J. MORROW	05-12-08	DIMENSIONS ARE IN MILLIMETERS	
APPL. MECH.: T. BOWSER	05-12-08	ANGLE: DECIMAL: ±30°	
MFG.: I. CHICKLIS	05-12-08	1 PLACE DECIMAL: ±0.25	
		2 PLACE DECIMAL: ±0.13	
		SURFACE ROUGHNESS: 1.6	

STE connectivity		S9025PL	
MATERIAL: N/A		DWG. NO. S9025PLMO	
FINISH: N/A		REV AA	
APPROVALS		SCALE: 1:2	
DATE		PREVIOUS#	
DRAWN BY: K. SEARL		SIZE A3	
PROJ. ENG.: J. MORROW		SHEET 1 OF 1	
APPL. MECH.: T. BOWSER		2	
MFG.: I. CHICKLIS		3	
05-12-08		4	
05-12-08		5	
05-12-08		6	

THIS DRAWING IS UNPUBLISHED.
 © Copyright 2022 TE Connectivity Ltd.
 RELEASED FOR PUBLICATION
 ALL RIGHTS RESERVED.