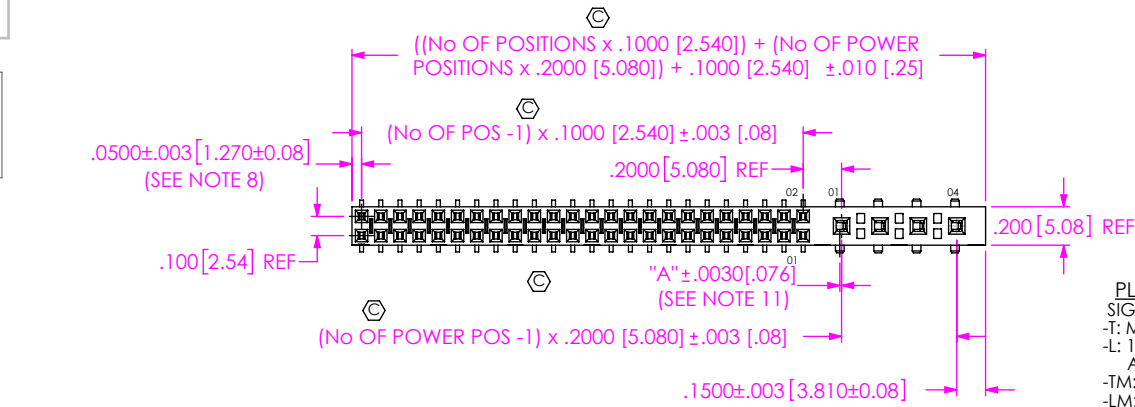


DO NOT SCALE FROM THIS PRINT

HPFC-1XX-XX-XX-D-XX-XX-X



No OF POSITIONS
-02 THRU -24 (PER ROW)

LEAD STYLE
-01: THROUGH HOLE (C-95-01-X & C-130-03-X)
-02: SURFACE MOUNT (C-95-02-X & C-130-04-X)

OPTION
-K: KAPTON PAD (SHEET 2) (USE K-500-300)

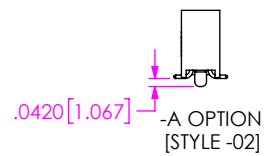
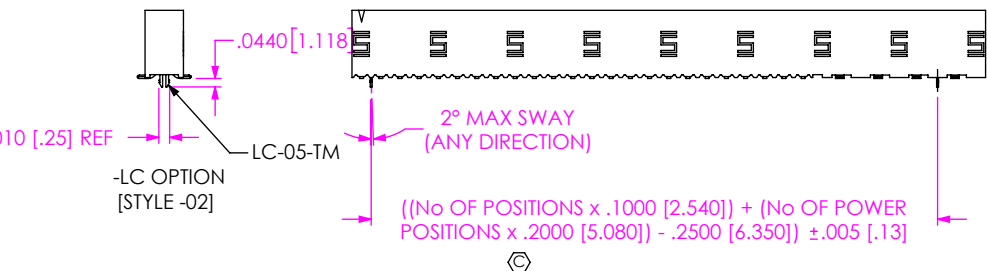
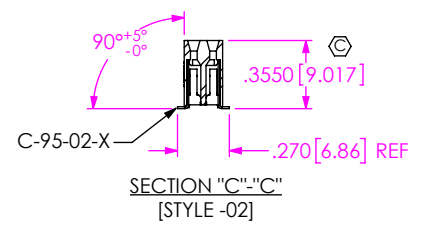
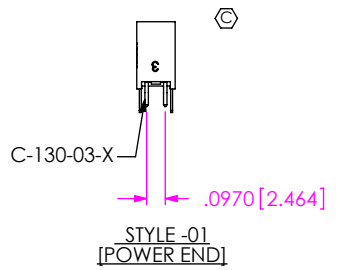
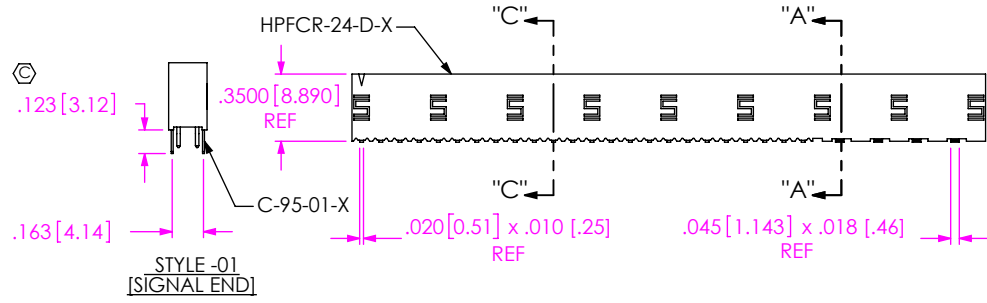
OPTION
-LC: LOCKING CLIP (SEE NOTE 9 & 10)
*-A: ALIGNMENT PIN (USE HPFCR-XX-D-X-A)

POWER POSITIONS
-02 THRU -04 (USE C-130-03-X AND C-130-04-X)

PLATING SPECIFICATION
SIGNAL ONLY
-T: MATTE TIN ON CONTACT AND TAIL
-L: 10 μ " LIGHT SELECTIVE GOLD IN CONTACT AREA, MATTE TIN ON TAIL
-TM: MATTE TIN CONTACT AND TAIL
-LM: 10 μ " LIGHT SELECTIVE GOLD IN CONTACT AREA, MATTE TIN ON TAIL

ROW SPECIFICATION
-D: DOUBLE (USE HPFCR-24-D-X-X)

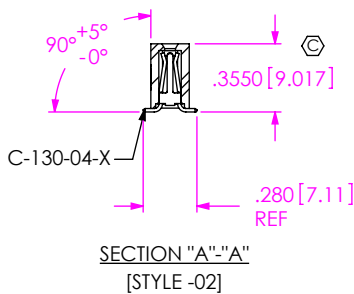
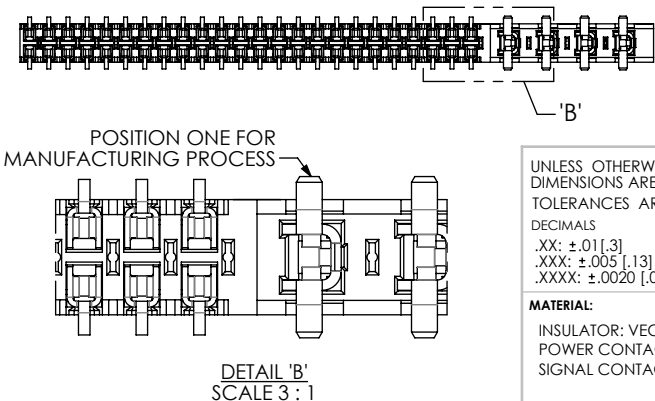
* = NOT ENGINEERING APPROVED



NOTES:

1. $\text{\textcircled{C}}$ REPRESENTS A CRITICAL DIMENSION.
2. COPLANARITY TO BE WITHIN .006" [.15] FOR 20 POSITION AND BELOW (SIGNAL) AND .008" [.20] FOR 21 -32 POS. (SIGNAL).
3. BURR ALLOWANCE: .003 [.08] MAX.
4. MAXIMUM CUT FLASH: .020 [.51].
5. MINIMUM PUSHOUT FORCE: 1 LB. MIN ON SIGNAL POSITIONS, 2 LB. MIN ON POWER POSITIONS.
6. MAXIMUM ALLOWABLE BOW: .005 INCH/INCH [MM/MM] AFTER ASSEMBLY.
7. OPEN PART OF POWER CONTACT FILLED TOWARDS SIGNAL CONTACTS.
8. MINIMUM WALL THICKNESS TO BE .010 [.25].
9. -LC OPTION NOT AVAILABLE WITH -01 LEAD STYLE.
10. DUE TO THE HIGH AMOUNT OF INSERTION FORCE NEEDED, THE -LC OPTION IS NOT COMPATIBLE WITH AUTO PLACEMENT, SAMTEC RECOMMENDS MANUAL PLACEMENT FOR ALL ASSEMBLIES WITH THE -LC OPTION.
11. IN THE TOP VIEW, THE PROPER LOCATION OF THE OFFSET SOLDER TAIL WILL BE WITH THE SOLDER TAIL OFFSET TO THE LEFT OF THE MATING OR PLUGGING HOLE. THE OFFSET IS DESCRIBED BY THE .009 REF.
12. TUBES ARE STANDARD PACKAGING.
13. ORDERS WILL BE PACKAGED ACCORDING TO THE SAMTEC PACKAGING EFFICIENCY STANDARDS (SPES) FOUND ON WWW.SAMTEC.COM

LEAD STYLE	"A"
-01	.0065[0.165]
-02	.0045[0.114]



UNLESS OTHERWISE SPECIFIED, DIMENSIONS ARE IN INCHES.
TOLERANCES ARE:
DECIMALS ANGLES
.XX: $\pm .01 [.3]$ 2°
.XXX: $\pm .005 [.13]$
.XXXX: $\pm .0020 [.051]$

PROPRIETARY NOTE
THIS DOCUMENT CONTAINS CONFIDENTIAL AND PROPRIETARY INFORMATION AND ALL DESIGN, MANUFACTURING, REPRODUCTION, USE, PATENT RIGHTS AND SALES RIGHTS ARE EXPRESSLY RESERVED BY SAMTEC, INC. THIS DOCUMENT SHALL NOT BE DISCLOSED, IN WHOLE OR PART, TO ANY UNAUTHORIZED PERSON OR ENTITY NOR REPRODUCED, TRANSFERRED OR INCORPORATED IN ANY OTHER PROJECT IN ANY MANNER WITHOUT THE EXPRESS WRITTEN CONSENT OF SAMTEC, INC.

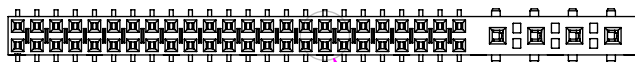


520 PARK EAST BLVD, NEW ALBANY, IN 47150
PHONE: 812-944-6733 FAX: 812-948-5047
e-Mail: info@SAMTEC.com code: 55322

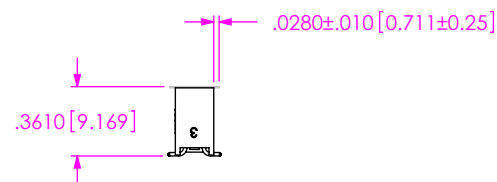
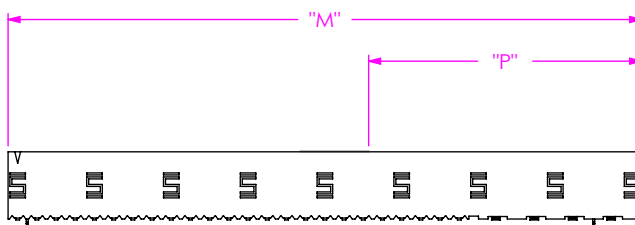
MATERIAL: DO NOT SCALE DRAWING
INSULATOR: VECTRA E130i COLOR: BLACK
POWER CONTACT: BeCu 174HT
SIGNAL CONTACT: PHOS BRONZE CDA510

SHEET SCALE: 1:1

DESCRIPTION:
.200 [5.08] POWER COMBO SOCKET ASSEMBLY
DWG. NO.
HPFC-1XX-XX-XX-D-XX-XX-X
BY: DEAN P 01/06/1999 SHEET 1 OF 2

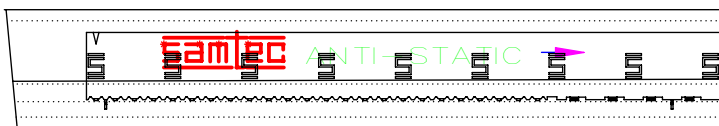


$\phi .256 [6.50]$



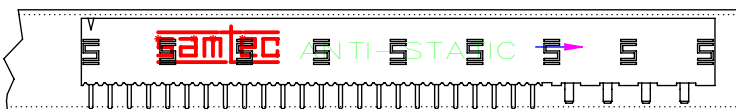
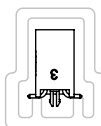
-K OPTION
(SHOWN: HPFC-122-02-X-D-4-K)

NOTE: "M" = TOTAL PART LENGTH (REF)
"P" = $\{("M" - .256 [6.50]) / 2\} \pm .020 [.51]$



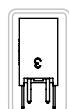
01

TUBE: PT-1-24-01-69
PLUG: TP-07



01

TUBE: PT-1-24-08-15
PLUG: TP-03



PACKAGING VIEW

c:\enterprisevault\DWG\MISC\MKTG\HPFC-1XX-XX-XX-D-XX-XX-X-MKT.SLDRW

PROPRIETARY NOTE
THIS DOCUMENT CONTAINS CONFIDENTIAL AND PROPRIETARY INFORMATION AND ALL DESIGN, MANUFACTURING, REPRODUCTION, USE, PATENT RIGHTS AND SALES RIGHTS ARE EXPRESSLY RESERVED BY SAMTEC, INC. THIS DOCUMENT SHALL NOT BE DISCLOSED, IN WHOLE OR PART, TO ANY UNAUTHORIZED PERSON OR ENTITY NOR REPRODUCED, TRANSFERRED OR INCORPORATED IN ANY OTHER PROJECT IN ANY MANNER WITHOUT THE EXPRESS WRITTEN CONSENT OF SAMTEC, INC.



520 PARK EAST BLVD, NEW ALBANY, IN 47150
PHONE: 812-944-6733 FAX: 812-948-5047
e-Mail: info@SAMTEC.com code: 55322

DO NOT SCALE DRAWING

SHEET SCALE: 1:1

DESCRIPTION:
.200 [5.08] POWER COMBO SOCKET ASSEMBLY

DWG. NO.
HPFC-1XX-XX-XX-D-XX-XX-X

BY: DEAN P 01/06/1999 SHEET 2 OF 2