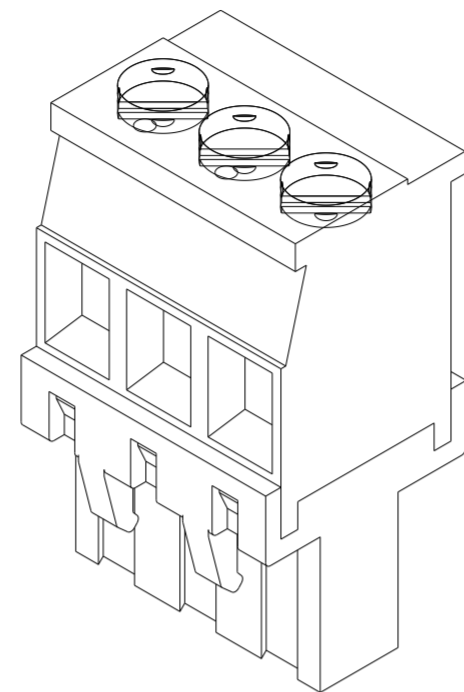
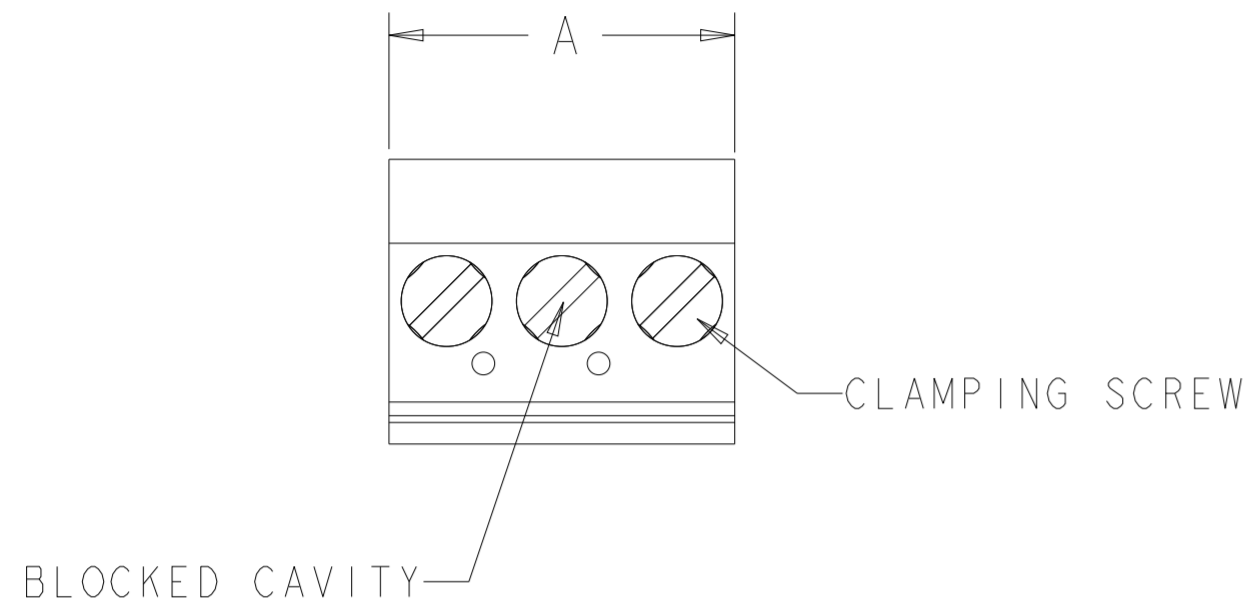
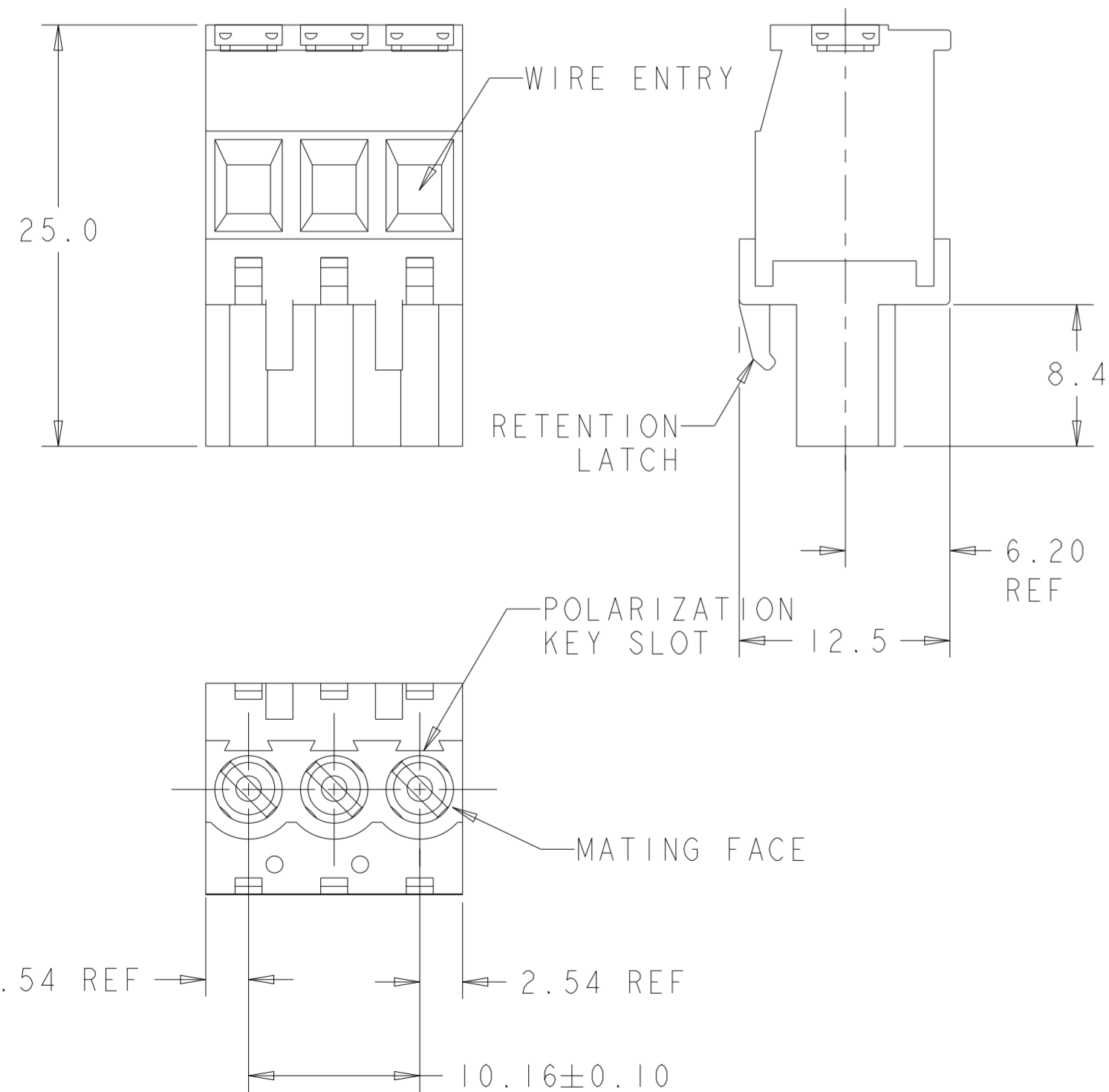


| P | LTR | DESCRIPTION | DATE | DWN | APVD |
|---|-----|---------------------|-----------|-----|------|
| | D3 | PART STATUS UPDATED | 05OCT2021 | GMN | SS |
| | | | | | |
| | | | | | |



284051-2 AS SHOWN

- 1. MATERIALS AND FINISH:
 HOUSING: PA 6-6, UL 94-V0, COLOR: SEE TABLE.
 CLAMP: BRASS, NICKEL PLATED.
 CONTACT SPRING: PHOSPHOR BRONZE, FINISH: SEE TABLE.
 CLAMPING SCREW: M3, BRASS, NICKEL PLATED.
- 2. WIRE SIZE RANGE: 12-30 AWG.
- 3. NOT CUMULATIVE TOLERANCE.
- 4. INK MARKING, BLACK COLOR.
- 5. INK MARKING, WHITE COLOR.



| | | | | | | |
|----------|--------------|---------------------|---------------|--------|------------|-----------------------|
| OBSOLETE | SEE DETAIL T | TIN PLATED | BLACK | 35.56 | 4 | 1-284051-7 |
| OBSOLETE | SEE DETAIL T | TIN PLATED | GREEN | 35.56 | 4 | 1-284051-6 |
| OBSOLETE | SEE DETAIL S | 0.00076 SELECT GOLD | GREEN | 15.24 | 2 | 1-284051-5 |
| OBSOLETE | - | 0.00076 SELECT GOLD | GREEN | 15.24 | 2 | 1-284051-4 |
| - | - | TIN PLATED | GREEN | 127.00 | 13 | 1-284051-3 |
| - | - | TIN PLATED | GREEN | 116.84 | 12 | 1-284051-2 |
| - | - | TIN PLATED | GREEN | 106.68 | 11 | 1-284051-1 |
| - | - | TIN PLATED | GREEN | 96.52 | 10 | 1-284051-0 |
| - | - | TIN PLATED | GREEN | 86.36 | 9 | 284051-9 |
| - | - | TIN PLATED | GREEN | 76.20 | 8 | 284051-8 |
| - | - | TIN PLATED | GREEN | 66.04 | 7 | 284051-7 |
| - | - | TIN PLATED | GREEN | 55.88 | 6 | 284051-6 |
| - | - | TIN PLATED | GREEN | 45.72 | 5 | 284051-5 |
| - | - | TIN PLATED | GREEN | 35.56 | 4 | 284051-4 |
| - | - | TIN PLATED | GREEN | 25.40 | 3 | 284051-3 |
| - | - | TIN PLATED | GREEN | 15.24 | 2 | 284051-2 |
| MARKING | | CONTACT FINISH | HOUSING COLOR | A | NO OF POSN | PART NUMBER |

THIS DRAWING IS A CONTROLLED DOCUMENT.

DWN S. WELDON 16NOV2005
 CHK C. RICHARD 16NOV2005
 APVD C. RICHARD 16NOV2005

STE TE Connectivity

NAME: TERMINAL BLOCK, VERTICAL, PLUG, STACKING, RIGHT HAND, 10.16mm PITCH

SIZE: A2 CAGE CODE: 00779 DRAWING NO: C-284051 RESTRICTED TO: -

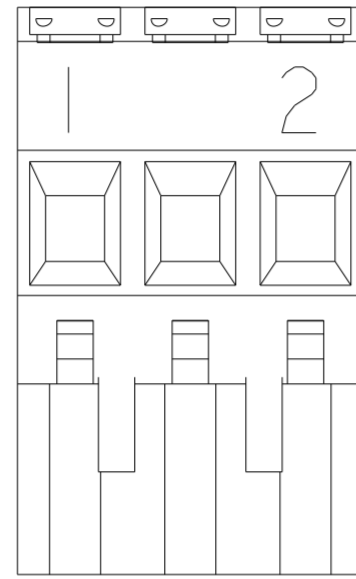
SCALE: 3:1 SHEET 1 OF 2 REV D3

PRODUCT SPEC: -
 APPLICATION SPEC: -
 WEIGHT: -

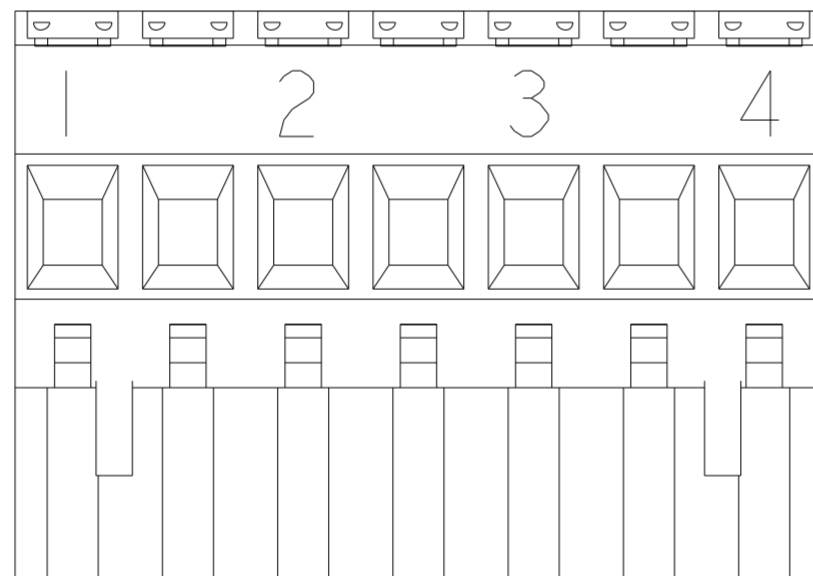
CUSTOMER DRAWING

REVISIONS

| P | LTR | DESCRIPTION | DATE | DWN | APVD |
|---|-----|-------------|------|-----|------|
| - | - | SEE SHEET 1 | - | - | - |
| | | | | | |
| | | | | | |



DETAIL S



DETAIL T

| | | | | |
|---|--|---------------------------------|---|--------------------|
| THIS DRAWING IS A CONTROLLED DOCUMENT. | | DWN S. WELDON 16NOV2005 | STE TE Connectivity | |
| DIMENSIONS: mm | | CHK C. RICHARD 16NOV2005 | | |
| TOLERANCES UNLESS OTHERWISE SPECIFIED: | | APVD C. RICHARD 16NOV2005 | NAME TERMINAL BLOCK, VERTICAL, PLUG, STACKING, RIGHT HAND, 10.16mm PITCH | |
| 0 PLC ± 1 PLC ±0.3 2 PLC ±0.25 3 PLC ±0.000 4 PLC ±0.0000 ANGLES ±2° | | PRODUCT SPEC - | SIZE A2 | CAGE CODE 00779 |
| MATERIAL | | FINISH | DRAWING NO C-284051 | RESTRICTED TO - |
| | | WEIGHT - | SCALE 3:1 | SHEET 2 OF 2 |
| | | CUSTOMER DRAWING | REV D3 | |