

2336313-2 ✓ ACTIVE



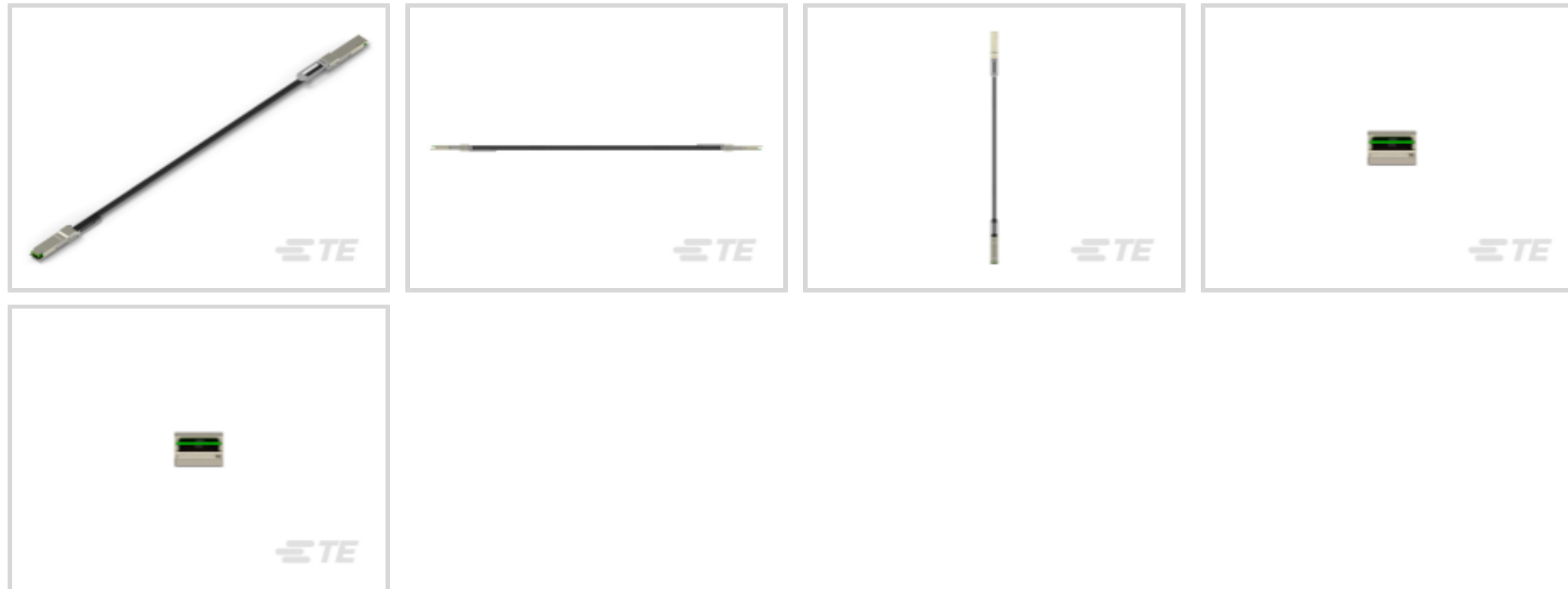
zQSFP+/QSFP28

TE Internal #: 2336313-2

QSFP Cable Assembly, 16 Positions, 3.28 ft [1 m], 25 Gb/s, Black Cable, Shielded, 32 AWG, .032 mm², Madison TurboTwin - Round Jacketed, QSFP Plug

[View on TE.com >](#)

Cable Assemblies > Copper Cable Assemblies > Pluggable I/O Cable Assemblies > QSFP28 to QSFP28 Cable Assembly: 32 AWG



Cable Assembly Type: **QSFP**

Equalized: **No**

Wire Size: **.032 mm²**

Outside Cable Diameter: **5.6 mm [.221 in]**

[All QSFP28 to QSFP28 Cable Assembly: 32 AWG \(4\)](#)

Features

Product Type Features

| | |
|-------------------------|------------------------------------|
| Cable Assembly Category | High Speed, Industry Standard |
| Cable Assembly Type | QSFP |
| Connector Type (End A) | QSFP Plug |
| Connector Type (End B) | QSFP Plug |
| Cable Style | Madison TurboTwin - Round Jacketed |

Configuration Features

| | |
|----------------------------|----|
| Number of Positions | 16 |
| Number of Pairs | 8 |
| Number of Signal Positions | 16 |

Electrical Characteristics

| | |
|-----------|-------|
| Impedance | 100 Ω |
|-----------|-------|

Signal Characteristics

| | |
|-----------|---------|
| Data Rate | 25 Gb/s |
|-----------|---------|



Body Features

| | |
|---------------------------|-------|
| Equalized | No |
| Cable Color | Black |
| Cable Flammability Rating | CL2 |

Dimensions

| | |
|------------------------|----------------------|
| Wire Size | .032 mm ² |
| Outside Cable Diameter | 5.6 mm[.221 in] |

Operation/Application

| | |
|--------------|-----|
| Shielded | Yes |
| Halogen Free | No |

Other

| | |
|-----------------------|--------------|
| Cable Assembly Length | 1 m[3.28 ft] |
|-----------------------|--------------|

Product Compliance

[For compliance documentation, visit the product page on TE.com>](#)

| | |
|---|--|
| EU RoHS Directive 2011/65/EU | Compliant with Exemptions |
| EU ELV Directive 2000/53/EC | Not Compliant |
| China RoHS 2 Directive MIIT Order No 32, 2016 | Restricted Materials Above Threshold |
| EU REACH Regulation (EC) No. 1907/2006 | Current ECHA Candidate List: JUNE 2023 (235) Candidate List Declared Against: JUL 2021 (219) Does not contain REACH SVHC |
| Halogen Content | Not Low Halogen - contains Br or Cl > 900 ppm. |
| Solder Process Capability | Not reviewed for solder process capability |

Product Compliance Disclaimer

This information is provided based on reasonable inquiry of our suppliers and represents our current actual knowledge based on the information they provided. This information is subject to change. The part numbers that TE has identified as EU RoHS compliant have a maximum concentration of 0.1% by weight in homogenous materials for lead, hexavalent chromium, mercury, PBB, PBDE, DBP, BBP, DEHP, DIBP, and 0.01% for cadmium, or qualify for an exemption to these limits as defined in the Annexes of Directive 2011/65/EU (RoHS2). Finished electrical and electronic equipment products will be CE marked as required by Directive 2011/65/EU. Components may not be CE marked. Additionally, the part numbers that TE has identified as EU ELV compliant have a maximum concentration of 0.1% by weight in homogenous materials for lead, hexavalent chromium, and mercury, and 0.01% for cadmium, or qualify for an exemption to these limits as defined in the Annexes of Directive 2000/53/EC (ELV). Regarding the REACH Regulation, the information TE provides on SVHC in articles for this part number is based on the latest European Chemicals Agency (ECHA) 'Guidance on requirements for substances in articles' posted at this URL: <https://echa.europa.eu/guidance-documents/guidance-on-reach>

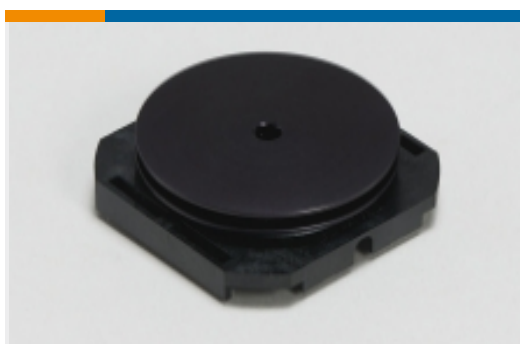


Compatible Parts



TE Part # 2352105-1
CDQ CAGE ASSEMBLY

Also in the Series | zQSFP+/QSFP28



Heat Sinks(1)



Pluggable I/O Cable Assemblies(81)



Pluggable IO Connectors & Cages(425)

Customers Also Bought



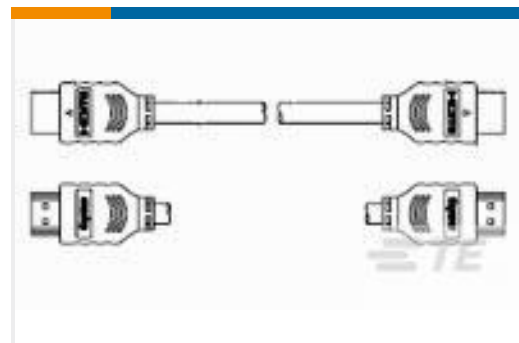
TE Part #1551892-1
Cage Assy Behind Bezel QSFP28



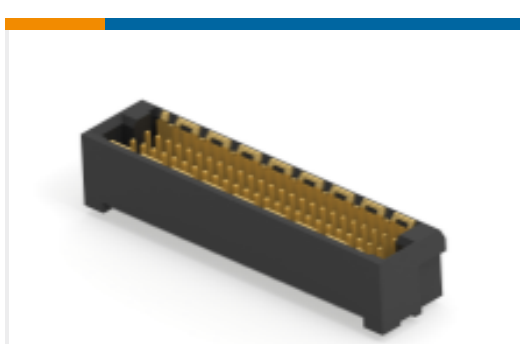
TE Part #1551920-2
zQSFP+ connector assembly



TE Part #2334985-4
SFP28 DIRECT ATTACH CA, 2M,
32AWG



TE Part #1770019-1
C/A, HDMI TO HDMI, 2000MM



TE Part #354183-E
MSPEED 50 M SMD M2 B AB VV 137
094 * * E

Documents

Product Drawings

QSFP 25GIG 32AWG 1 METER

English

CAD Files



3D PDF

3D

Customer View Model

[ENG_CVM_CVM_2336313-2_2.2d_dxf.zip](#)

English

Customer View Model

[ENG_CVM_CVM_2336313-2_2.3d_igs.zip](#)

English

Customer View Model

[ENG_CVM_CVM_2336313-2_2.3d_stp.zip](#)

English

By downloading the CAD file I accept and agree to the [Terms and Conditions](#) of use.

Product Specifications

[Product Specification](#)

English