

4

3

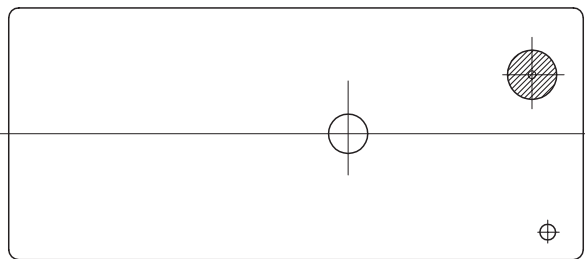
2

1

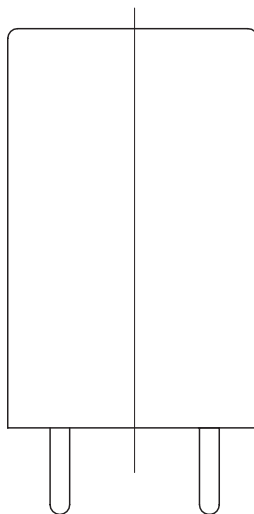
© - TE Connectivity. All Rights Reserved.

REVISIONS

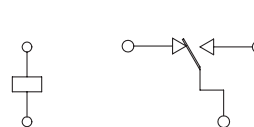
| P | LTR | DESCRIPTION | DATE | DWN | APVD |
|---|-----|---|-----------|-------|------|
| F | | BASE MATERIAL CHANGE TO PBT, DIMENSION CHANGE ECN-21-117512 | 08-SEP-21 | X.R.L | K.T |



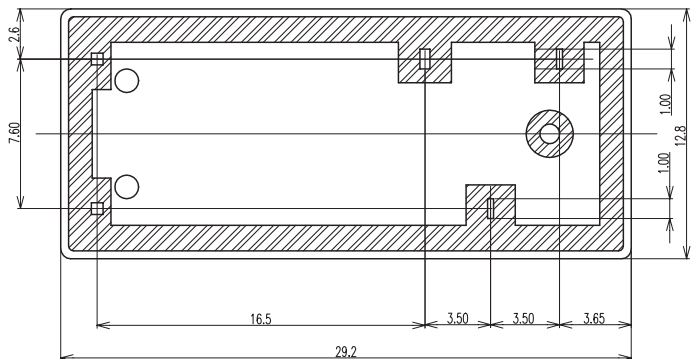
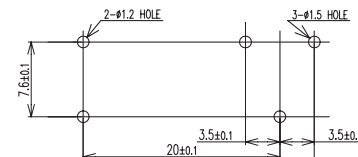
TE
 OMIH - SS -112LM \varnothing 12V \equiv
 16A 240V~ /24V \equiv
 1/3HP 120V~
 16A/45A 240V~
 16(4)A 240V~
 16(3)A 240V~
 16A 30V \equiv
 OE G C
 MADE IN CHINA
 LOT NO. X
 1 CHARACTER(A TO Z) FOR LINE IDENTIFIER
 0.60 0.50 0.30



CONNECTION DIAGRAM (BOTTOM VIEW)



DRILLING DIAGRAM(2/1) (BOTTOM VIEW)



THIS DRAWING IS A CONTROLLED DOCUMENT.

DIMENSIONS: mm

TOLERANCES UNLESS OTHERWISE SPECIFIED:



- 0 PLC ± -
- 1 PLC ± -
- 2 PLC ± -
- 3 PLC ± -
- 4 PLC ± -
- ANGLES ± -
- FINISH -

MATERIAL

DWN Y.Xiao
 CHK N.Funayama
 APVD CH.HSU
 PRODUCT SPEC -
 APPLICATION SPEC -
 WEIGHT -



NAME

OMIH CUSTOMER DRAWING

SIZE CAGE CODE DRAWING NO RESTRICTED TO

A3 00779 C=6-1440000-9

CUSTOMER DRAWING SCALE 1:1 SHEET 1 OF 2 REV F

4

3

2

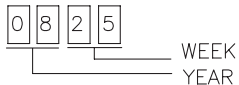
1

© - TE Connectivity. All Rights Reserved.

| REVISIONS | | | | | |
|-----------|-----|-------------|------|-----|------|
| P | LTR | DESCRIPTION | DATE | DWN | APVD |
| - | - | SEE SHEET 1 | - | - | - |

NOTES:

- 1. TERMINAL DIMENSION IS NOT INCLUDING SOLDER TIP.
- 2. LOT NO. SYSTEM AS FOLLOWING:



- 3. GENERAL TOLERANCE AS FOLLOWING:

| TOLERANCE | |
|------------|------|
| 0~0.99mm | ±0.1 |
| 1mm~2.99mm | ±0.2 |
| 3mm MIN. | ±0.3 |

- 4. FOR THE TIN-PLATING OF THE PINS:
+0.1mm FOR WIDTH, THICKNESS AND DIAMETER.
+0.5mm FOR LENGTH.

| | | | |
|--------------|-------------|--------------|--------|
| OMIH-SH-148L | 7-1440000-7 | OMIH-SH-148L | 48V |
| OMIH-SH-148D | 1-1461373-0 | OMIH-SH-148D | 48V |
| OMIH-SH-124L | 1-1461373-4 | OMIH-SH-124L | 24V |
| OMIH-SH-124D | 1461373-9 | OMIH-SH-124D | 24V |
| OMIH-SH-118L | 7-1440000-2 | OMIH-SH-118L | 18V |
| OMIH-SH-118D | 1461373-8 | OMIH-SH-118D | 18V |
| OMIH-SH-112L | 7-1440000-0 | OMIH-SH-112L | 12V |
| OMIH-SH-112D | 6-1440000-9 | OMIH-SH-112D | 12V |
| OMIH-SH-109L | 1-1461373-3 | OMIH-SH-109L | 9V |
| OMIH-SH-109D | 1461373-7 | OMIH-SH-109D | 9V |
| OMIH-SH-106L | 1-1461373-2 | OMIH-SH-106L | 6V |
| OMIH-SH-106D | 1461373-6 | OMIH-SH-106D | 6V |
| OMIH-SH-105L | 1-1461373-1 | OMIH-SH-105L | 5V |
| OMIH-SH-105D | 0-1461373-5 | OMIH-SH-105D | 5V |
| DESCRIPTION | TE PART NO | PART A | PART B |

RELAY TYPE

| | | | | |
|------------------|------------|-------------|--------------------|------|
| | | UV RESIN | UV SEAL | 17 |
| | | EPOXY RESIN | SEAL | 16 |
| UL94 V-0 | | PBT | CASE | 15 |
| CLASS E | | UEW | MAGNETIC WIRE | 14 |
| UL94 V-0 | | PBT (F) | BASE | 13 |
| UL94 V-0 | | PBT | BOBBIN | 12 |
| | SOLDER DIP | CP WIRE | COIL TERMINAL | 11 |
| UL94 V-0 | | PPS | CARD | 10 |
| | | Ag ALLOY | MOVABLE CONTACT | 9 |
| | | Ag ALLOY | STATIONARY CONTACT | 8 |
| | | Cu ALLOY | HINGE SPRING | 7 |
| | SOLDER DIP | Cu ALLOY | B TERMINAL | 6 |
| | SOLDER DIP | Cu ALLOY | M TERMINAL | 5 |
| | SOLDER DIP | Cu ALLOY | MOVABLE SPRING | 4 |
| | | STEEL | CORE | 3 |
| | | STEEL | ARMATURE | 2 |
| | | STEEL | YOKE | 1 |
| INCOMBUSTIBILITY | TREATMENT | MATERIAL | DESCRIPTION | ITEM |

| | | | | | |
|--|--|------------------------------|-----------------------|-----------|---------------|
| THIS DRAWING IS A CONTROLLED DOCUMENT. | | DWN Y.Xiao | | | |
| DIMENSIONS: mm | | CHK N.Funayama | NAME | | |
| | | APVD CH.HSU | OMIH CUSTOMER DRAWING | | |
| TOLERANCES UNLESS OTHERWISE SPECIFIED: | | PRODUCT SPEC | DRAWING NO | | |
| 0 PLC ±- | | APPLICATION SPEC | SIZE | CAGE CODE | DRAWING NO |
| 1 PLC ±- | | WEIGHT | A3 | 00779 | C=6-1440000-9 |
| 2 PLC ±- | | RESTRICTED TO | | | |
| 3 PLC ±- | | CUSTOMER DRAWING | | | |
| 4 PLC ±- | | SCALE 1:1 SHEET 2 OF 2 REV F | | | |
| ANGLES ±- | | | | | |
| FINISH | | | | | |