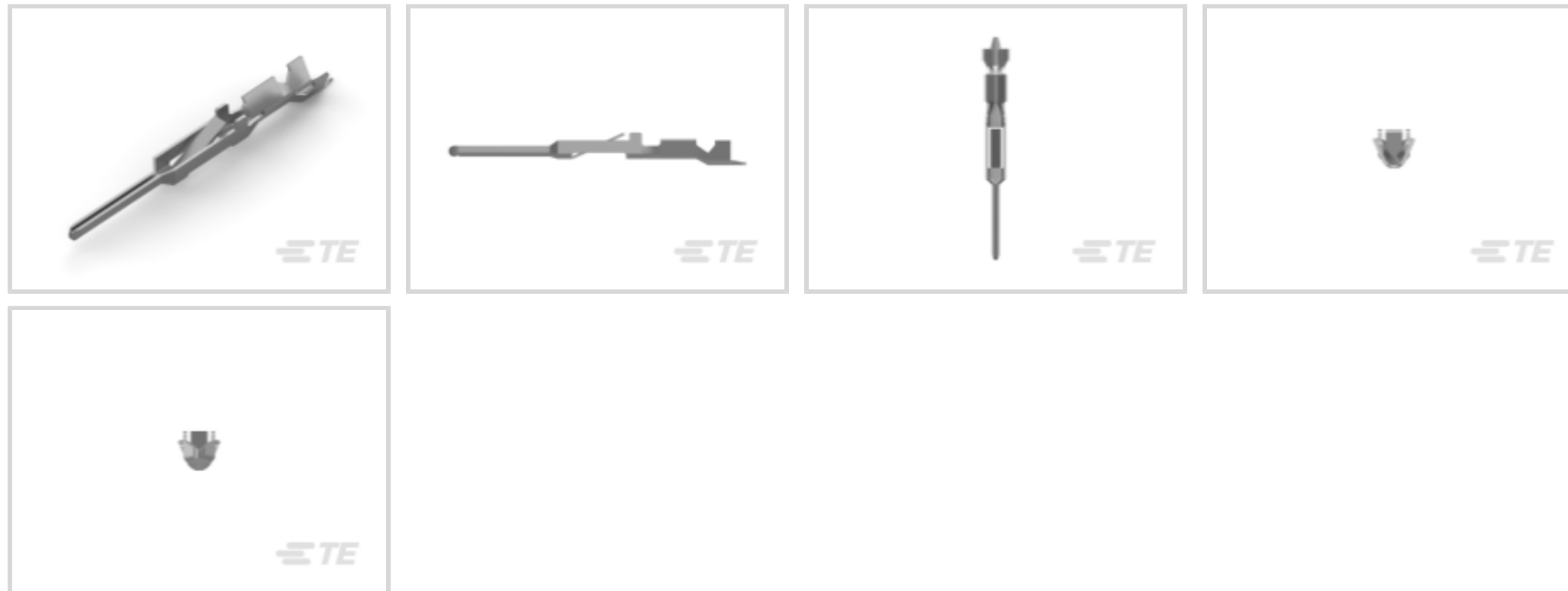




Connectors > Contacts > Connector Contacts



Contact Type: **Pin**

Contact Mating Area Plating Material: **Tin**

Wire Contact Termination Area Plating Material: **Pre-Tin**

Wire Size: **.05 – .15 mm²**

Features

Contact Features

Mating Tab Width	.64 mm[.025 in]
Mating Tab Thickness	.7 mm[.03 in]
Contact Type	Pin
Contact Mating Area Plating Material	Tin
Wire Contact Termination Area Plating Material	Pre-Tin
Contact Base Material	Phosphor Bronze
Contact Current Rating (Max)	2 A

Termination Features

Product Terminates To	Wire & Cable
-----------------------	--------------

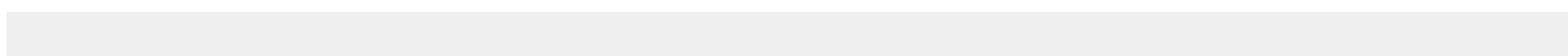
Dimensions

Compatible Insulation Diameter Range	1 – 1.4 mm[.039 – .055 in]
Wire Size	.05 – .15 mm ²

Usage Conditions

Operating Temperature Range	-20 – 95 °C[-4 – 203 °F]
-----------------------------	--------------------------

Operation/Application



Circuit Application

Signal

Packaging Features

Packaging Quantity

1000

Packaging Method

Loose Piece

Product Compliance

For compliance documentation, visit the product page on [TE.com](https://www.te.com)>

EU RoHS Directive 2011/65/EU

Compliant

EU ELV Directive 2000/53/EC

Compliant

China RoHS 2 Directive MIIT Order No 32, 2016

No Restricted Materials Above Threshold

EU REACH Regulation (EC) No. 1907/2006

Current ECHA Candidate List: JUNE 2023 (235)
 Candidate List Declared Against: JUNE 2023 (235)
 Does not contain REACH SVHC

Halogen Content

Low Halogen - Br, Cl, F, I < 900 ppm per homogenous material. Also BFR/CFR/PVC Free

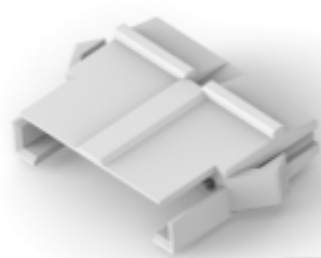
Solder Process Capability

Not applicable for solder process capability

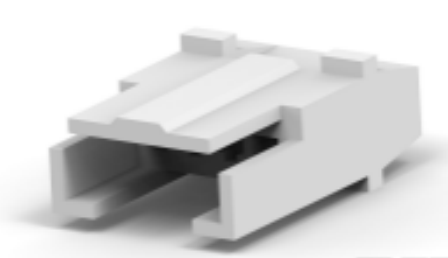
Product Compliance Disclaimer

This information is provided based on reasonable inquiry of our suppliers and represents our current actual knowledge based on the information they provided. This information is subject to change. The part numbers that TE has identified as EU RoHS compliant have a maximum concentration of 0.1% by weight in homogenous materials for lead, hexavalent chromium, mercury, PBB, PBDE, DBP, BBP, DEHP, DIBP, and 0.01% for cadmium, or qualify for an exemption to these limits as defined in the Annexes of Directive 2011/65/EU (RoHS2). Finished electrical and electronic equipment products will be CE marked as required by Directive 2011/65/EU. Components may not be CE marked. Additionally, the part numbers that TE has identified as EU ELV compliant have a maximum concentration of 0.1% by weight in homogenous materials for lead, hexavalent chromium, and mercury, and 0.01% for cadmium, or qualify for an exemption to these limits as defined in the Annexes of Directive 2000/53/EC (ELV). Regarding the REACH Regulation, the information TE provides on SVHC in articles for this part number is based on the latest European Chemicals Agency (ECHA) 'Guidance on requirements for substances in articles' posted at this URL: <https://echa.europa.eu/guidance-documents/guidance-on-reach>

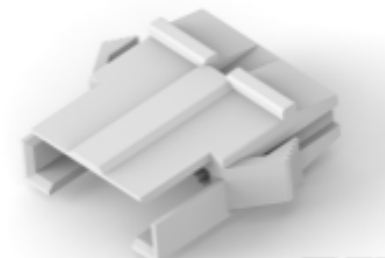
Compatible Parts



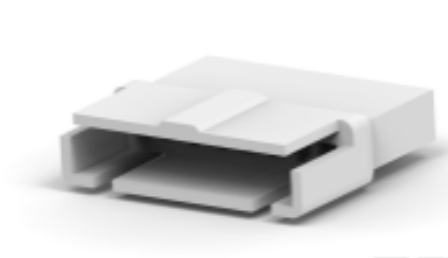
TE Part # 172213-8
8P EI HSG PANEL-MOUNT



TE Part # 172211-4
EIS CAP HSG FREE HANG 4P NATURAL



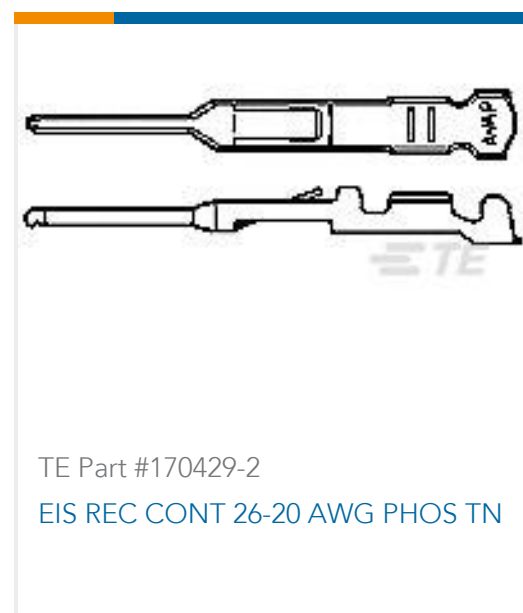
TE Part # 172213-5
EIS CAP HSG PANEL MOUNT 5P NATURAL



TE Part # 172211-8
8P CAP HSG FREE HANG EI S CONN



Customers Also Bought





TE Part #170204-2
EIS CONTACT



TE Part #171822-2
EIS REC. HSG 2P-NATURAL



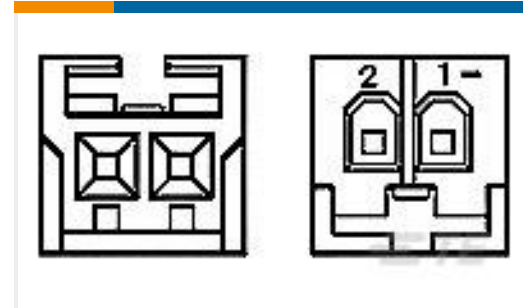
TE Part #172213-2
EIS CAP HSG PANEL MOUNT 2P
NATUTURAL



TE Part #171825-3
POST HEADER ASSY EI SRS 3POS



TE Part #172211-2
EIS CAP HSG FREE HANG 2P
NATUTURAL



TE Part #172486-2
2P REC HSG CRIMP EI SER

Documents

Product Drawings

[EI PIN LP](#)

Japanese

CAD Files

[3D PDF](#)

3D

Customer View Model

[ENG_CVM_CVM_170430-2_C_c-170430-2-c.2d_dxf.zip](#)

English

Customer View Model

[ENG_CVM_CVM_170430-2_C_c-170430-2-c.3d_igs.zip](#)

English

Customer View Model

[ENG_CVM_CVM_170430-2_C_c-170430-2-c.3d_stp.zip](#)

English

By downloading the CAD file I accept and agree to the [Terms and Conditions](#) of use.

Datasheets & Catalog Pages

[1-1773972-5_EIS_Connectors_Brochure](#)

English

Product Specifications

[Crimping of AMP EI Series Connector Contacts](#)

Japanese

[Application Specification](#)

Japanese



Instruction Sheets

Instruction Sheet (non U.S.)

English

Extraction Tool For AMP EI Series Cap Housing

English

Instruction Sheet (non U.S.)

Japanese

INSTRUCTION SHEET(PEW12 HAND TOOL FOR EI TAB 170430)

Japanese