



Connectors > Automotive Connectors > Automotive Housings > MULTILOCK, CONNECTOR HOUSING



Connector System: **Wire-to-Board**

Number of Positions: **12**

Connector & Housing Type: **Housing for Female Terminals**

Centerline (Pitch): **3.5 mm, 5 mm [.138 in, .197 in]**

Sealable: **No**

[All MULTILOCK, CONNECTOR HOUSING \(403\)](#)

Features

Product Type Features

Mixed & Hybrid Connector	Yes
Connector Shape	Rectangular
Connector System	Wire-to-Board
Connector & Housing Type	Housing for Female Terminals
Sealable	No
Connector & Contact Terminates To	Wire & Cable
Primary Locking Feature	On the Terminal

Configuration Features

Number of Positions	12
Number of Rows	2

Electrical Characteristics

Operating Voltage	24 VDC
Nominal Voltage Architecture	12 V, 24 V

Body Features

Cable Exit Angle	90°
Primary Product Color	Natural



Contact Features

Contact Size	1.8mm, 2.8mm
Contact Type	Receptacle
Mating Tab Width	1.8 mm, 2.8 mm[.071 in][.11 in]
Contact Current Rating (Max)	7.5 A, 15 A, 35 A

Mechanical Attachment

Terminal Position Assurance	Yes
Strain Relief	Without
Mating Alignment Type	Polarized
Mating Alignment	With
Connector Mounting Type	Cable Mount (Free-Hanging)

Housing Features

Housing Material	PA GF
Centerline (Pitch)	3.5 mm, 5 mm[.138 in][.197 in]

Dimensions

Connector Height	34 mm[1.339 in]
Product Width	20.8 mm[.819 in]
Product Length	40.2 mm[1.583 in]
Row-to-Row Spacing	5.3 mm[.209 in]

Usage Conditions

Operating Temperature (Max)	70 °C, 75 °C, 80 °C, 85 °C[158 °F][167 °F] [176 °F][185 °F]
Operating Temperature Range	-30 – 105 °C[-22 – 221 °F]

Operation/Application

Circuit Application	Power & Signal
---------------------	----------------

Packaging Features

Packaging Quantity	1000
Packaging Method	Bag

Other

Serviceable	No
Connector Position Assurance Capable	No



Product Compliance

For compliance documentation, visit the product page on TE.com>

EU RoHS Directive 2011/65/EU	Compliant
EU ELV Directive 2000/53/EC	Compliant
China RoHS 2 Directive MIIT Order No 32, 2016	No Restricted Materials Above Threshold
EU REACH Regulation (EC) No. 1907/2006	Current ECHA Candidate List: JUNE 2023 (235) Candidate List Declared Against: JUNE 2023 (235) Does not contain REACH SVHC
Halogen Content	Low Halogen - Br, Cl, F, I < 900 ppm per homogenous material. Also BFR/CFR/PVC Free
Solder Process Capability	Not applicable for solder process capability

Product Compliance Disclaimer

This information is provided based on reasonable inquiry of our suppliers and represents our current actual knowledge based on the information they provided. This information is subject to change. The part numbers that TE has identified as EU RoHS compliant have a maximum concentration of 0.1% by weight in homogenous materials for lead, hexavalent chromium, mercury, PBB, PBDE, DBP, BBP, DEHP, DIBP, and 0.01% for cadmium, or qualify for an exemption to these limits as defined in the Annexes of Directive 2011/65/EU (RoHS2). Finished electrical and electronic equipment products will be CE marked as required by Directive 2011/65/EU. Components may not be CE marked. Additionally, the part numbers that TE has identified as EU ELV compliant have a maximum concentration of 0.1% by weight in homogenous materials for lead, hexavalent chromium, and mercury, and 0.01% for cadmium, or qualify for an exemption to these limits as defined in the Annexes of Directive 2000/53/EC (ELV). Regarding the REACH Regulation, the information TE provides on SVHC in articles for this part number is based on the latest European Chemicals Agency (ECHA) ‘Guidance on requirements for substances in articles’ posted at this URL: <https://echa.europa.eu/guidance-documents/guidance-on-reach>

Compatible Parts



TE Part # CAT-LMPH9507
Low & Medium Power Header



TE Part # CAT-M9194-T273
MULTILOCK, RECEPTACLE AND TAB



TE Part # CAT-T4827-T273
TIMER, RECEPTACLE AND TAB



TE Part # 284160-1
COVER FOR 6+6 POS. HYBRID CONN

Also in the Series | Multilock Connector System



Automotive Connector Caps & Covers (8)



Automotive Connector Locks & Position Assurance(2)



Automotive Housings(426)



Automotive Terminals(110)



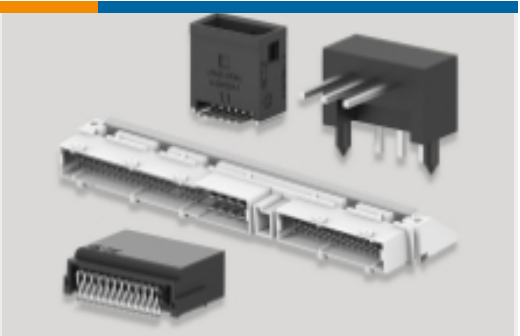
Connector Seals & Cavity Plugs(2)



Insertion & Extraction Tools(6)



Other Automotive Connector Accessories(12)

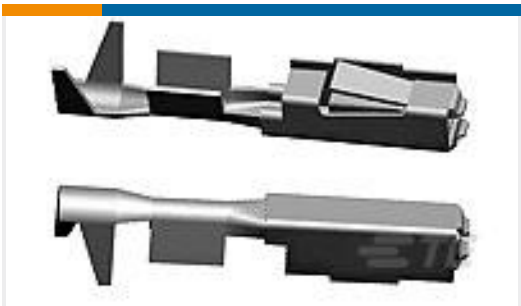


PCB Headers & Receptacles(89)

Customers Also Bought



TE Part #1534101-1
16POS MQS REC



TE Part #968678-2
MPQ2,8 Sn rec LL unseal. 0,35-0,5



TE Part #282686-1
Timer Connector Housing



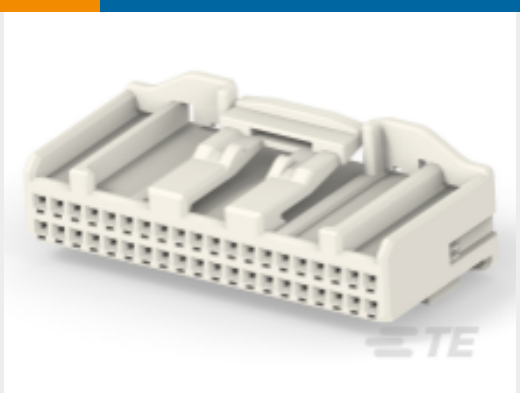
TE Part #1-2355507-1
3POS,MCON 1.2,REC HSG ASSY,SLD, COD A



TE Part #1-2355694-1
4POS,MCON 1.2,REC HSG ASSY,SLD, COD A



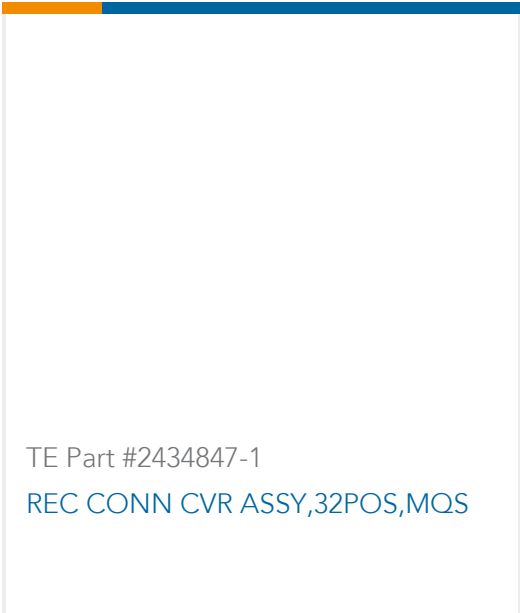
TE Part #2297818-1
SINGLE WIRE SEAL,HPF 1.2,RUBBER



TE Part #2325415-1
40POS,ML .025,REC HSG ASSY,UNSLD



TE Part #2341144-1
COVER,CABLE SEAL, GB AC



TE Part #2434847-1
REC CONN CVR ASSY,32POS,MQS

Documents



Product Drawings

12 POS. 070 RCPT.HSG. & SEC.LO

English

CAD Files

Customer View Model

ENG_CVM_CVM_284159-1_B.2d_dxf.zip

English

3D PDF

3D

Customer View Model

ENG_CVM_CVM_284159-1_B.3d_igs.zip

English

Customer View Model

ENG_CVM_CVM_284159-1_B.3d_stp.zip

English

By downloading the CAD file I accept and agree to the [Terms and Conditions](#) of use.

Datasheets & Catalog Pages

MULTILOCK Connector System

English

Product Specifications

Product Specification

English

6+6 POS. HEADER AND CONNECTOR FOR STEERING COLUMN DEVICE

English

HEADERS AND CONNECTORS FOR DOOR JUNCTION SYSTEM

English

Product Specification

English